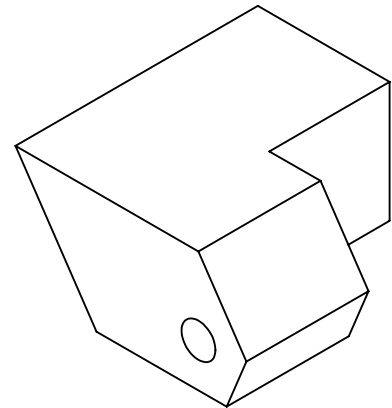


D1001870\_alIGO\_AOS\_D0900614\_Faraday Isolator Fixed Stop LH, PART PDM REV: X-005, DRAWING PDM REV: X-006

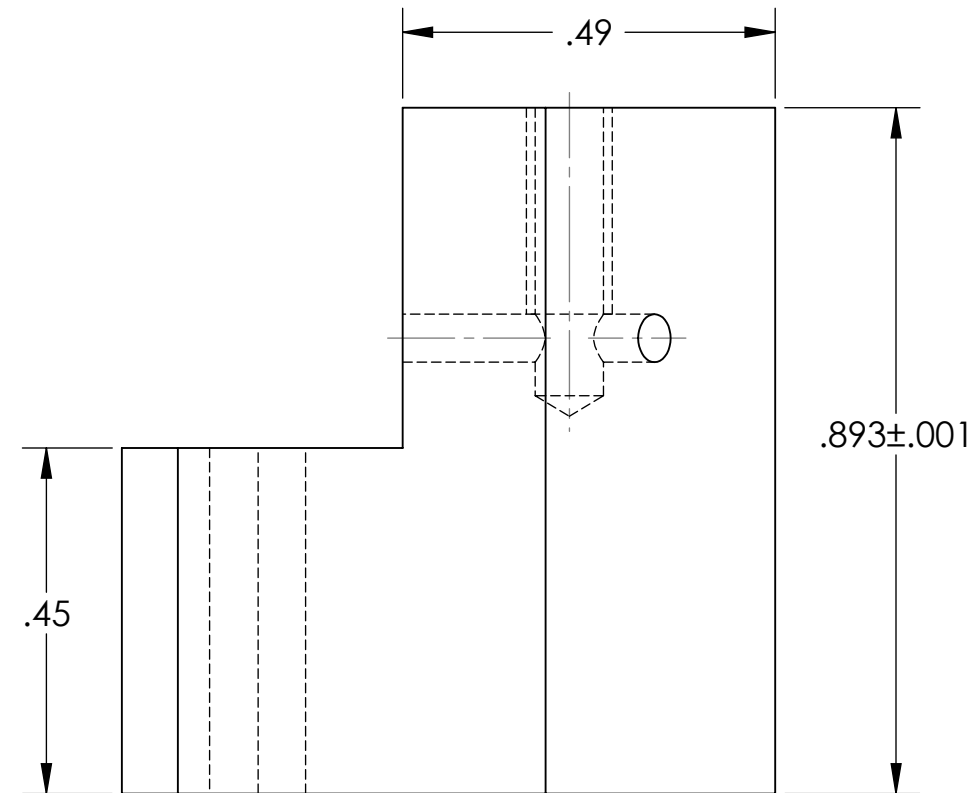
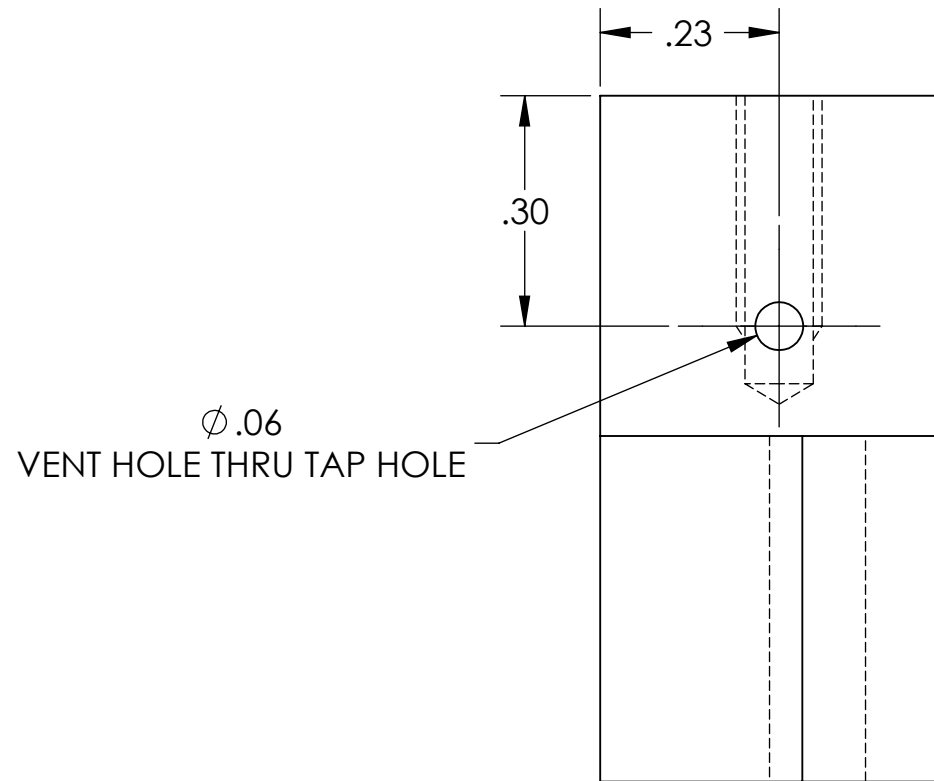
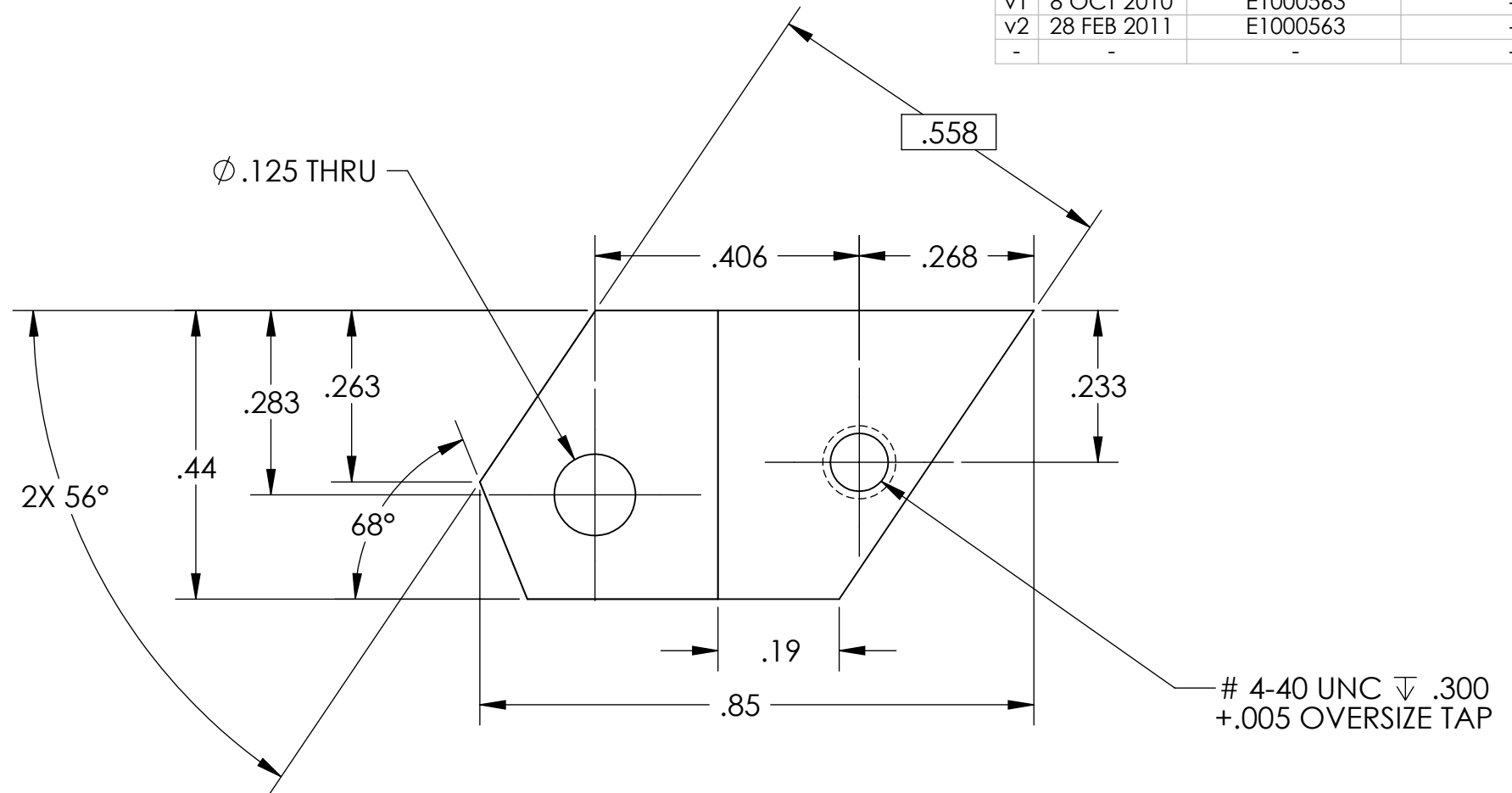
NOTES CONTINUED:  
5. SCRIBE, ENGRAVE, OR MECHANICALLY STAMP (NO DYES OR INKS) A UNIQUE THREE DIGIT SERIAL NUMBER & REVISION NUMBER ON EACH PART. SERIAL NUMBERS START AT 001 FOR THE FIRST ARTICLE AND PROCEED CONSECUTIVELY. BAG AND TAG PARTS WITH THEIR DRAWING PART NUMBER, REVISION, VARIANT OR "TYPE" (IF APPLICABLE), AND QUANTITY. IF PARTS ARE TOO SMALL TO SCRIBE, BAGGING AND TAGGING ALONE IS SUFFICIENT.  
EXAMPLE (PART): 001-v1  
EXAMPLE (TAG): DXXXXXX-VY, TYPE-XX, QTY: TBD

6. APPROXIMATE WEIGHT = 0.018 LB.  
7. MACHINE ALL SURFACES TO REMOVE OXIDES AND MILL FINISH. USE OF ABRASIVE REMOVAL TECHNIQUES IS NOT ALLOWED.  
8. ALL PARTS SHALL BE MANUFACTURED IN ACCORDANCE WITH LIGO SPECIFICATION E0900364.

REV.	DATE	DCN #	DRAWING TREE #
v1	8 OCT 2010	E1000563	-
v2	28 FEB 2011	E1000563	-
-	-	-	-



GENERAL VIEW FOR REFERENCE ONLY NO SCALE



NOTES AND TOLERANCES: (UNLESS OTHERWISE SPECIFIED)

1. INTERPRET DRAWING PER ASME Y14.5-1994.  
2. REMOVE ALL SHARP EDGES, R.02 MIN.  
3. DO NOT SCALE FROM DRAWING.  
4. ALL MACHINING FLUIDS MUST BE FULLY SYNTHETIC, FULLY WATER SOLUBLE AND FREE OF SULFUR, SILICONE, AND CHLORINE.

DIMENSIONS ARE IN INCHES

TOLERANCES:  
.XX ± .01  
.XXX ± .005

ANGULAR ± 0.5°

**LIGO** CALIFORNIA INSTITUTE OF TECHNOLOGY  
MASSACHUSETTS INSTITUTE OF TECHNOLOGY

SYSTEM: **ADVANCED LIGO** SUB-SYSTEM: **AOS**

NEXT ASSY: **D0900614**

PART NAME: **FIXED STOP\_LH**

DESIGNER	TQ. NGUYEN	15 JUL 2010	SIZE	DWG. NO.	REV.
DRAFTER	TQ. NGUYEN	27 AUG 2010	<b>B</b>	<b>D1001870</b>	<b>v2</b>
CHECKER	M. SMITH		SCALE: 4:1	PROJECTION:	SHEET 1 OF 1
APPROVAL	D. COYNE				