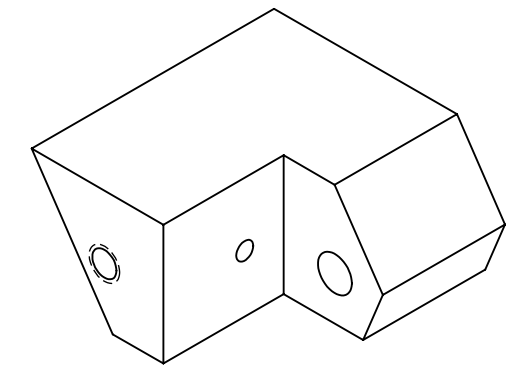
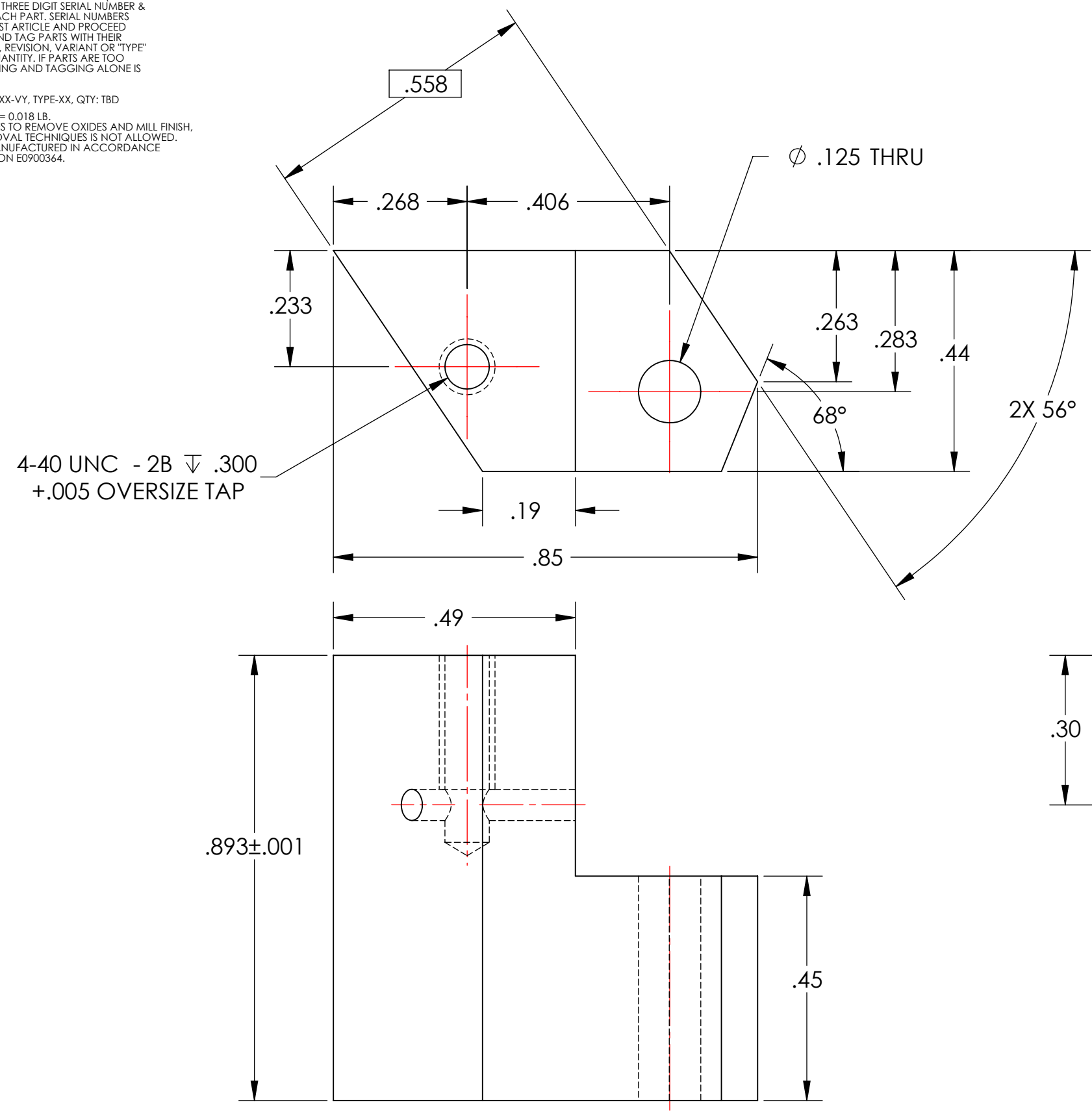


D1001859_d1lIGO_AOS_D0900615_Faraday Isolator Fixed Stop RH, PART PDM REV: X-006, DRAWING PDM REV: X-007

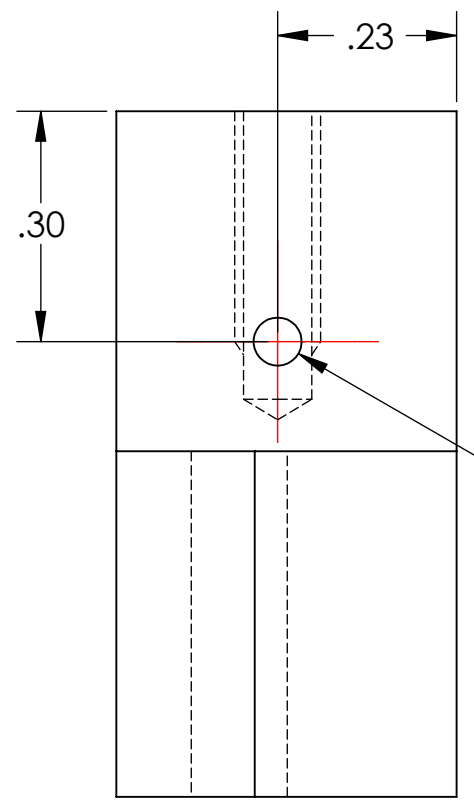
NOTES CONTINUED:
5. SCRIBE, ENGRAVE, OR MECHANICALLY STAMP (NO DYES OR INKS) A UNIQUE THREE DIGIT SERIAL NUMBER & REVISION NUMBER ON EACH PART. SERIAL NUMBERS START AT 001 FOR THE FIRST ARTICLE AND PROCEED CONSECUTIVELY. BAG AND TAG PARTS WITH THEIR DRAWING PART NUMBER, REVISION, VARIANT OR "TYPE" (IF APPLICABLE), AND QUANTITY. IF PARTS ARE TOO SMALL TO SCRIBE, BAGGING AND TAGGING ALONE IS SUFFICIENT.
EXAMPLE (PART): 001-v1
EXAMPLE (TAG): DXXXXXX-VY, TYPE-XX, QTY: TBD

6. APPROXIMATE WEIGHT = 0.018 LB.
7. MACHINE ALL SURFACES TO REMOVE OXIDES AND MILL FINISH. USE OF ABRASIVE REMOVAL TECHNIQUES IS NOT ALLOWED.
8. ALL PARTS SHALL BE MANUFACTURED IN ACCORDANCE WITH LIGO SPECIFICATION E0900364.

REV.	DATE	DCN #	DRAWING TREE #
v1	7 OCT 2010	E1000563	-
-	-	-	-
-	-	-	-



GENERAL VIEW FOR REFERENCE ONLY NO SCALE



∅ .06 VENT HOLE THRU TAP HOLE

NOTES AND TOLERANCES: (UNLESS OTHERWISE SPECIFIED)	
DIMENSIONS ARE IN INCHES	
TOLERANCES: .XX ± .01 .XXX ± .005 ANGULAR ± 0.5°	
1. INTERPRET DRAWING PER ASME Y14.5-1994. 2. REMOVE ALL SHARP EDGES, R.02 MIN. 3. DO NOT SCALE FROM DRAWING. 4. ALL MACHINING FLUIDS MUST BE FULLY SYNTHETIC, FULLY WATER SOLUBLE AND FREE OF SULFUR, SILICONE, AND CHLORINE.	
MATERIAL	6061-T6 Al
FINISH	63 μinch

CALIFORNIA INSTITUTE OF TECHNOLOGY MASSACHUSETTS INSTITUTE OF TECHNOLOGY		PART NAME		FIXED STOP_RH	
SYSTEM	ADVANCED LIGO	SUB-SYSTEM	AOS	DESIGNER	TQ. NGUYEN 15 JUL 2010
NEXT ASSY	D0900615	DRAPER	TQ. NGUYEN 20 AUG 2010	SIZE	DWG. NO. B D1001859
CHECKER	M. SMITH	APPROVAL	D. COYNE	REV.	v1
SCALE: 4:1				PROJECTION: SHEET 1 OF 1	