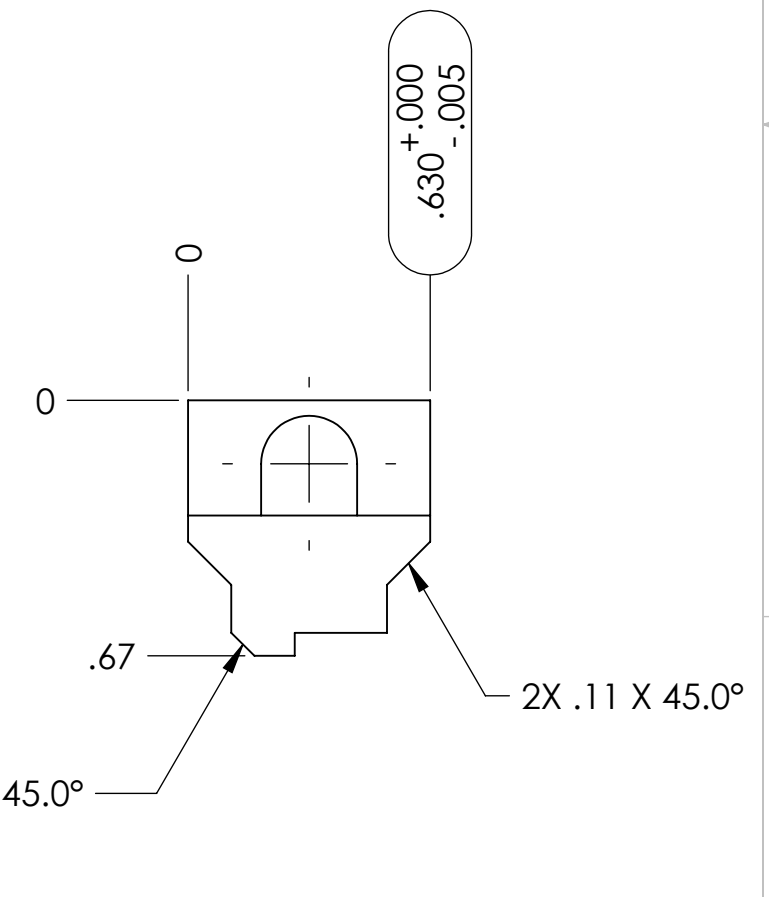
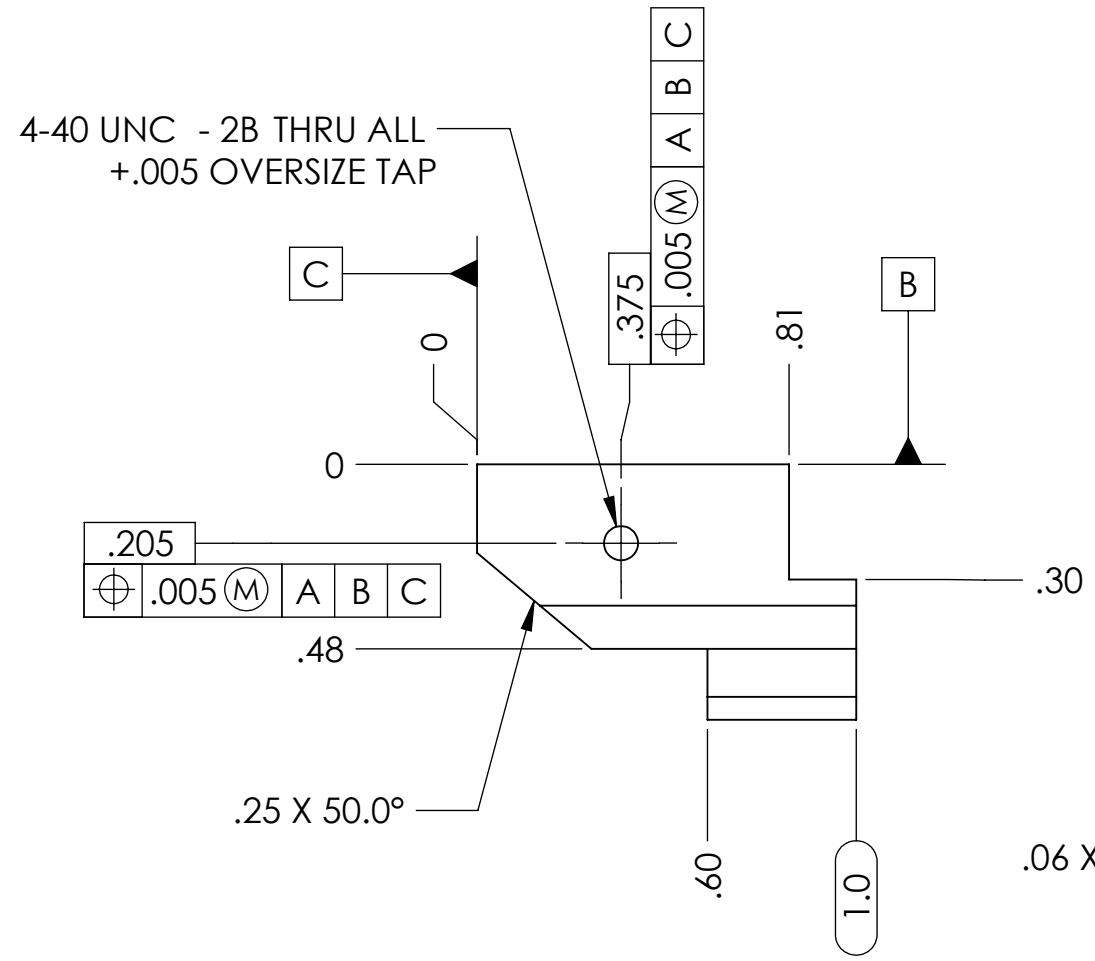
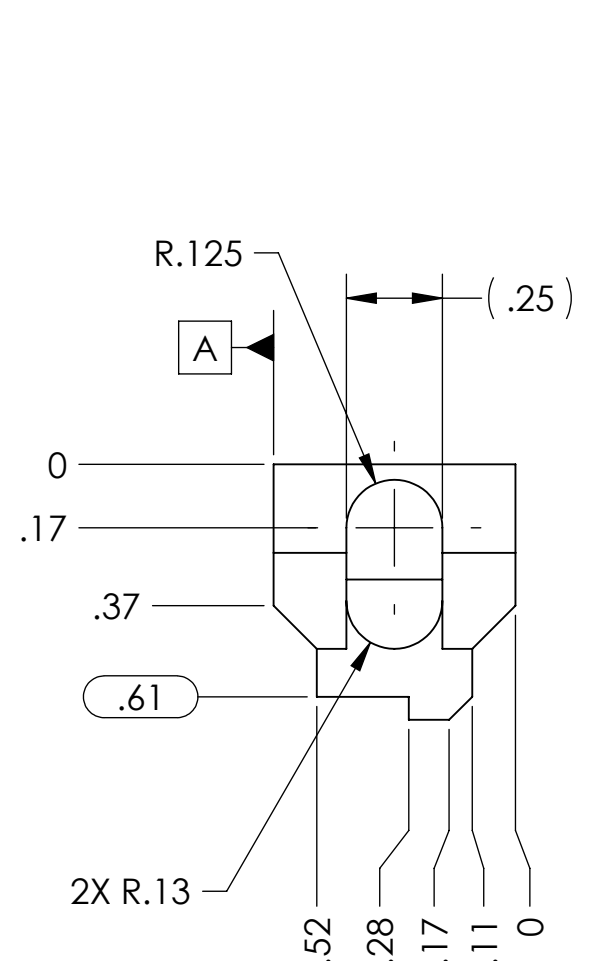
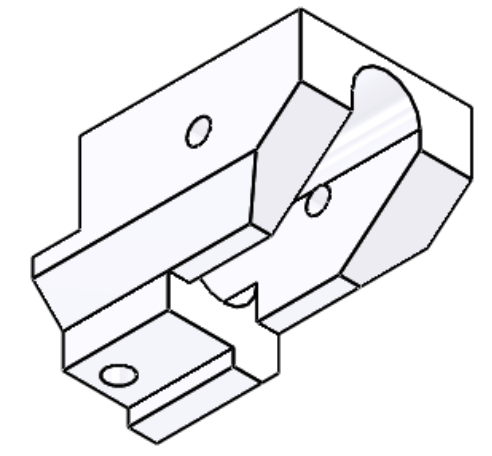
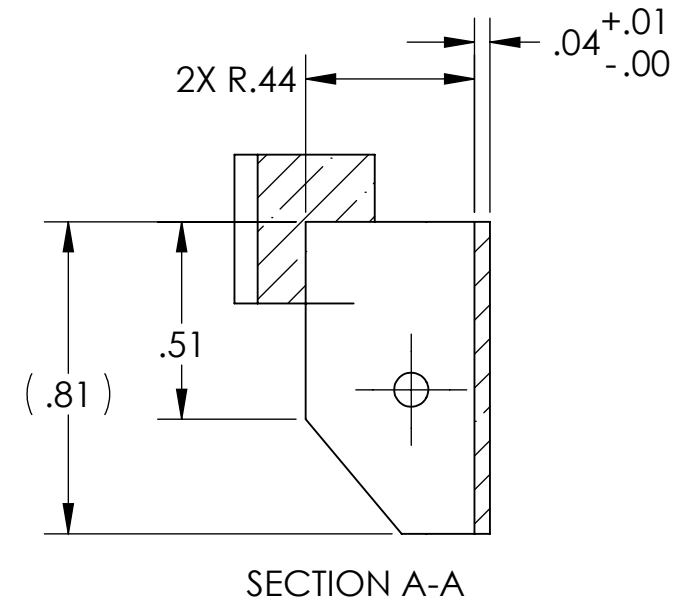
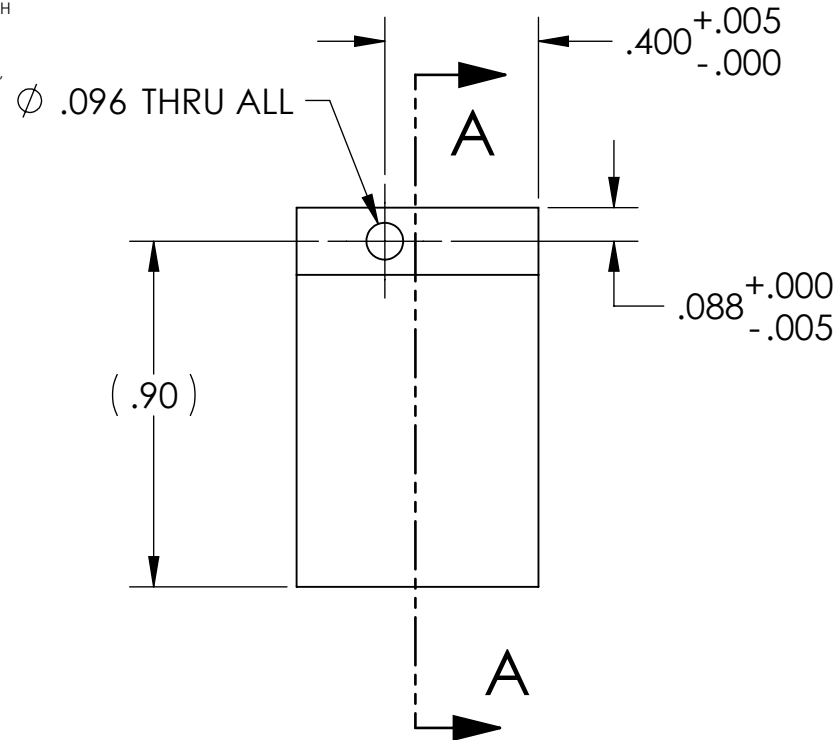


NOTES CONTINUED:
 5. SCRIBE, ENGRAVE, OR MECHANICALLY STAMP (NO DYES OR INKS) A UNIQUE THREE DIGIT SERIAL NUMBER & REVISION NUMBER ON EACH PART. SERIAL NUMBERS START AT 001 FOR THE FIRST ARTICLE AND PROCEED CONSECUTIVELY. BAG AND TAG PARTS WITH THEIR DRAWING PART NUMBER, REVISION, VARIANT OR "TYPE" (IF APPLICABLE), AND QUANTITY. IF PARTS ARE TOO SMALL TO SCRIBE, BAGGING AND TAGGING ALONE IS SUFFICIENT.
 EXAMPLE (PART): 001-v1
 EXAMPLE (TAG): DXXXXXX-VY, TYPE-XX, QTY: TBD
 6. PART SHOULD BE THOROUGHLY CLEAN AND DECREASED.

REV.	DATE	DCN #	DRAWING TREE #
v1	04-AUG-2010	E1000291	E1000295-v1
v2	16-SEP-2010	E1000291	E1000295-v2
-	-	-	-



NOTES AND TOLERANCES: (UNLESS OTHERWISE SPECIFIED)

DIMENSIONS ARE IN INCHES

TOLERANCES:
 .XX ± .01
 .XXX ± .005
 ANGULAR ± 0.1°

MATERIAL	Macor Ceramic	FINISH	32 μinch
----------	---------------	--------	----------

CALIFORNIA INSTITUTE OF TECHNOLOGY MASSACHUSETTS INSTITUTE OF TECHNOLOGY		PART NAME	
SYSTEM ADVANCED LIGO		SUB-SYSTEM AOS	
DESIGNER	M. JACOBSON	23 JUL 2010	SIZE DWG. NO.
DRAFTER	A. COLE	7/28/2010	B
CHECKER	C. TORRIE	7/28/2010	D1001858
APPROVAL	P. WILLEMS	7/28/2010	REV. v2
SCALE:	2:1	PROJECTION:	SHEET 1 OF 1

D1001858_RH ELEMENT RETAINER RIGHT, PART PDM REV: X-008, DRAWING PDM REV: X-006