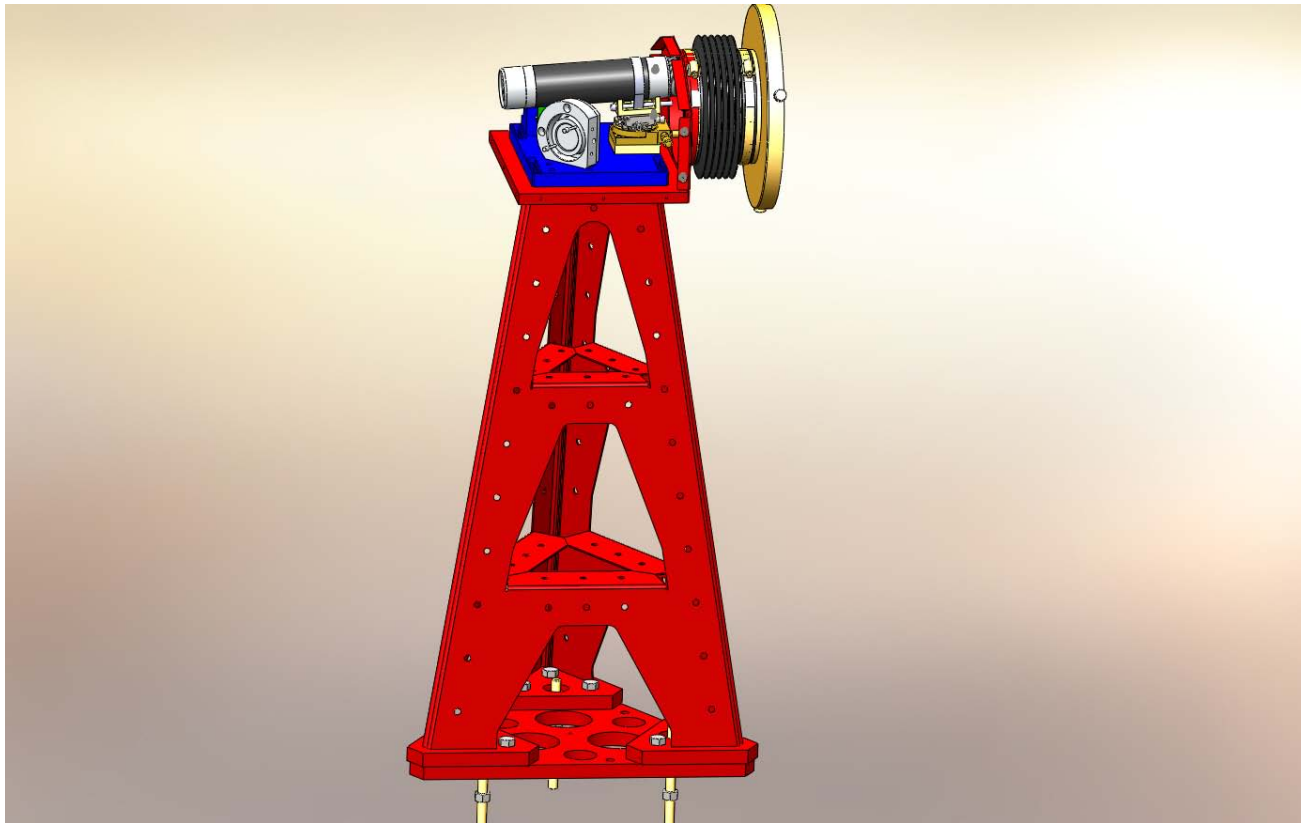


**aLIGO AOS OpLev TRX Pier Assembly (HAM)**

AUTHOR(S)	DATE	Document Change Notice, Release or Approval
Eric James	28 June, 2012	see LIGO DCC record Status

This document is intended to serve as a description of this assembly until a real assembly drawing can be made.



**Figure 1: HAM Transceiver Pier Assembly. Shown with cover removed.**

**Bill of Material**

Item	Part number	Description	Quant.
1	D1001854	TRX Pier Weldment	1
2	D1000434	Pier Footing	1
3	D1001627	TRX Mounting Base	1
4	D1001620	QPD Bracket	1
5	D1100290	QPD Board Assembly	1
6		15-pin M-M Cable, Photodiode Board	1
7	KSP-60-C1A-S05	OptoSigma Rotary Stage	1
8	GOHT40A10-MO2 0600-S10	OptoSigma Goniometer	1
9	SL38	Newport Gimbal Mirror Mount	1
10		Pico Motors w/Cables	2



## ALIGO ASSEMBLY DRAWING

## aLIGO AOS OpLev TRX Pier Assembly (HAM)

11	D1102242	Transmitter Telescope Mount	1
12	D0901362-1	Projection Telescope Assembly, Short	1
13	D1200463	Transceiver Enclosure Assembly	1
14	D1200622	6-inch Reducer	1
15	CT-6	Gortiflex 6" Rubber Bellows	1
16		1/2-20 x 1.5" Hex head cap screw	9
17		1/4-20 x 3/4" SHCS	10
18		1/4-20 x 3" SHCS	1
19		#8-32 x 1/2" SHCS	11
20		#8 Flat Washer	11
21		M3 x 10 SHCS	4
22		M3 x 6 SHCS	4
23		#4-40 x 5/8" SHCS	4
24		3" Band Clamp	1
25	45945K37	McMaster -Carr 6" Band Clamp	2
26	92421A540	McMaster -Carr 1/4-20 Brass Thumb Screw	3
27	9600K62	McMaster-Carr Rubber Grommet	1
28	F12 635S	Fermion Laser w/ 10m fiber	1
29	D1200461	Laser Power Board	1
30	D1100013	Whitening Chassis	1
31	D1101248	Anti-aliasing Chassis	1
32		9-pin M-F Cable, Anti-aliasing Chassis	1
33		BNC M-M Cable, Laser	1
34			
35			

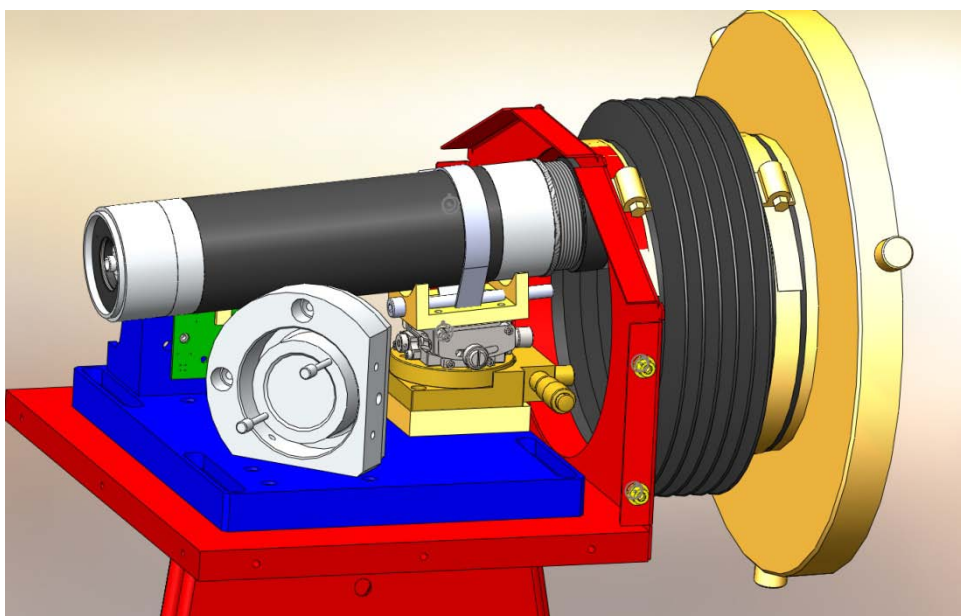


Figure 2: Telescope mounting hardware



ALIGO ASSEMBLY DRAWING

aLIGO AOS OpLev TRX Pier Assembly (HAM)

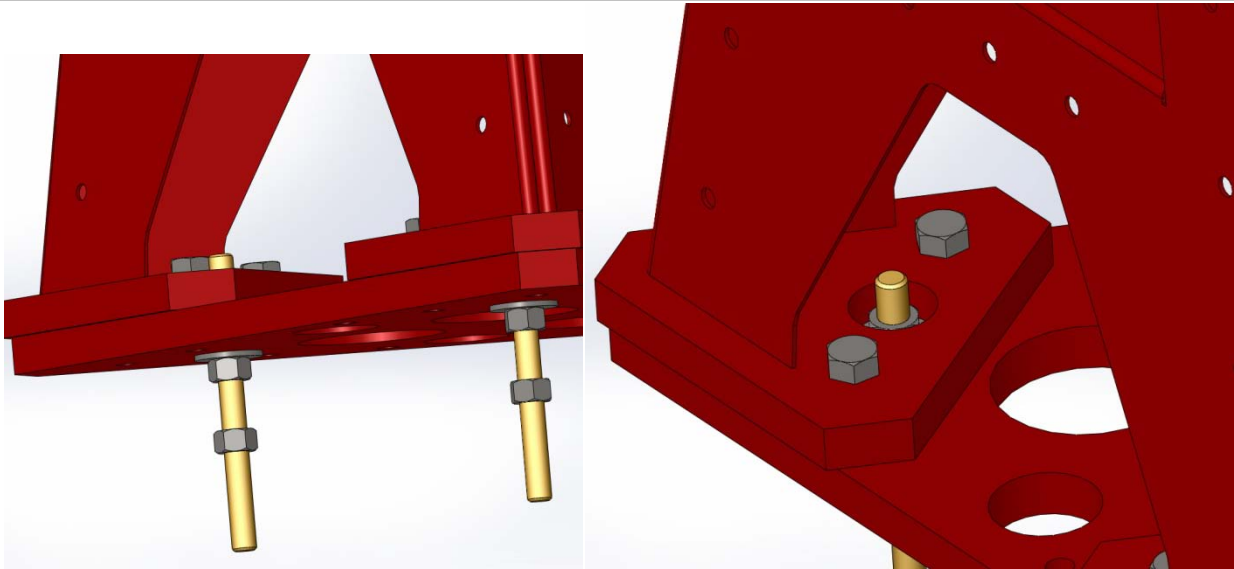


Figure 3: Base plate details

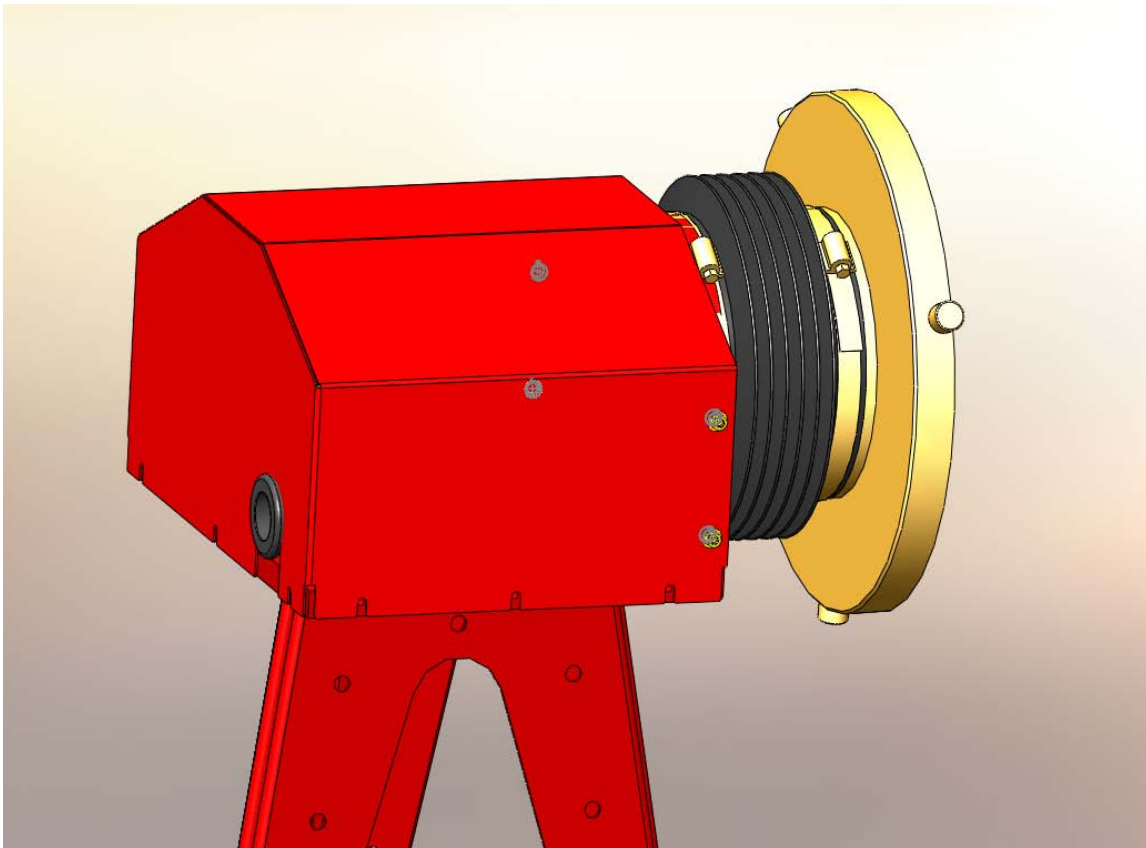


Figure 4: Cover installed