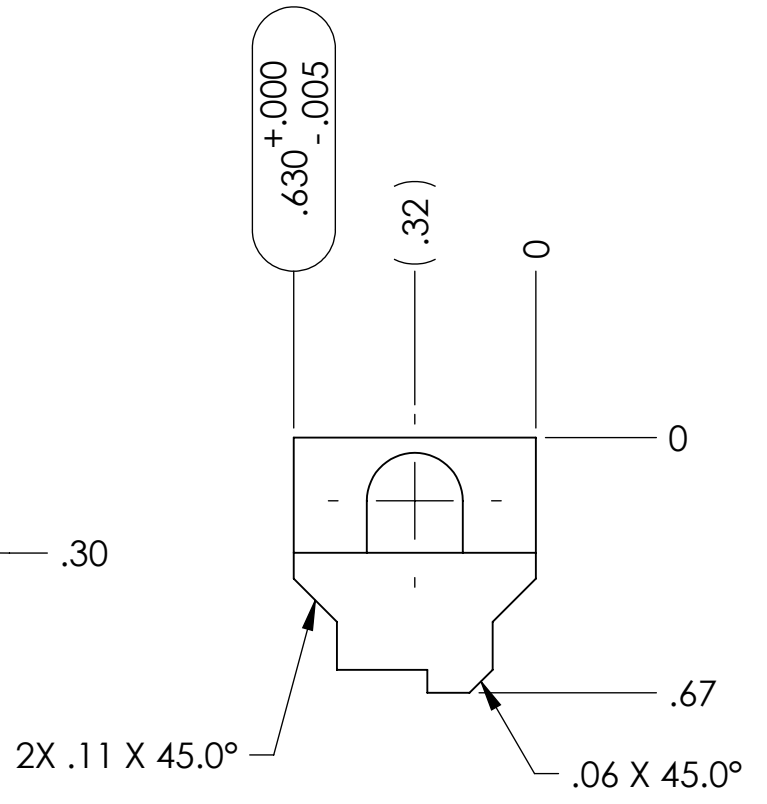
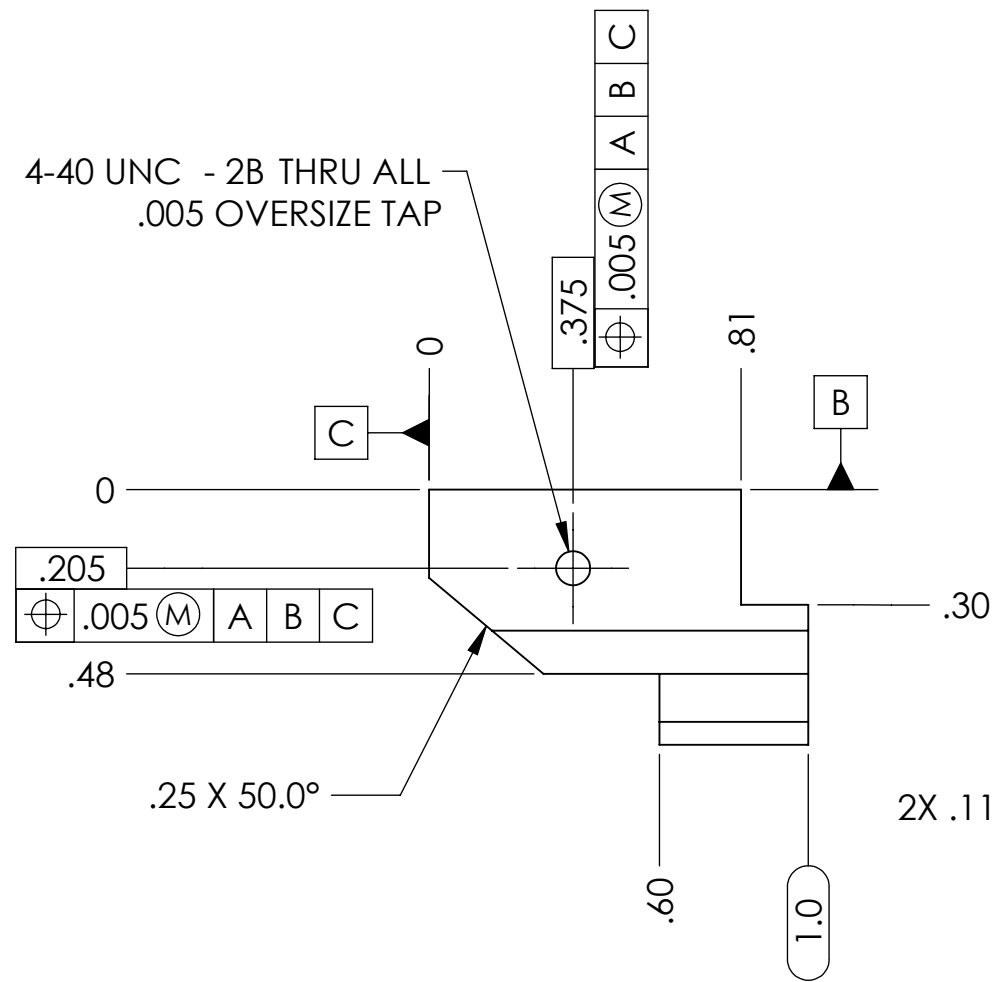
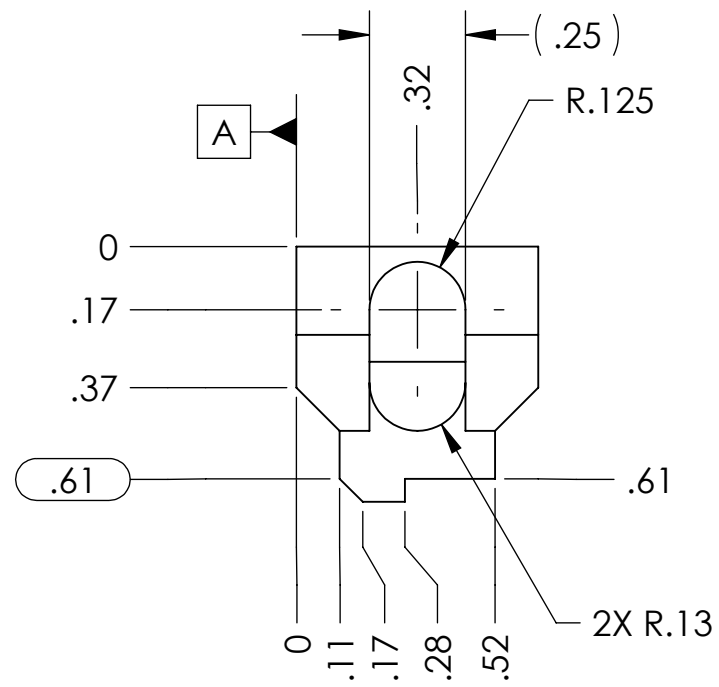
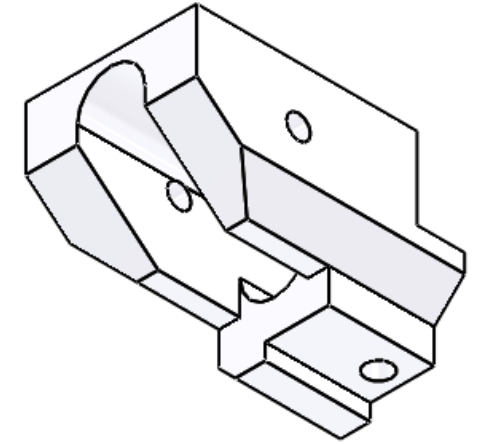
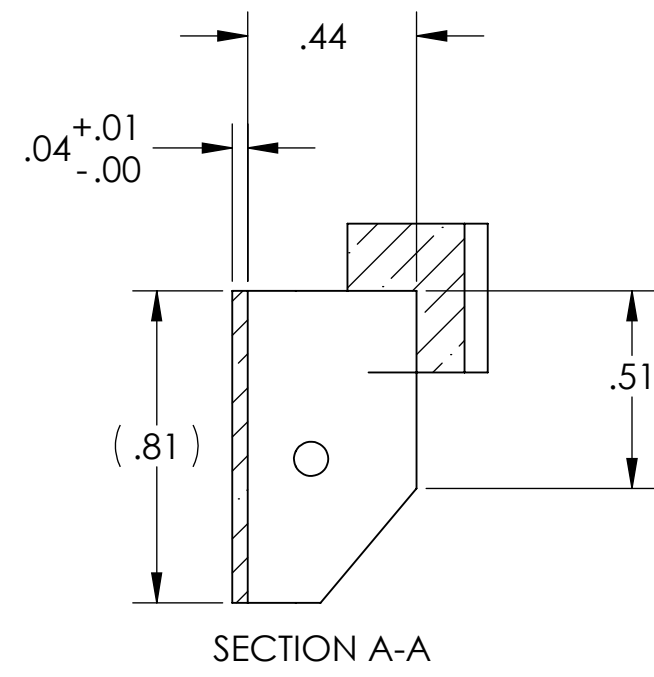
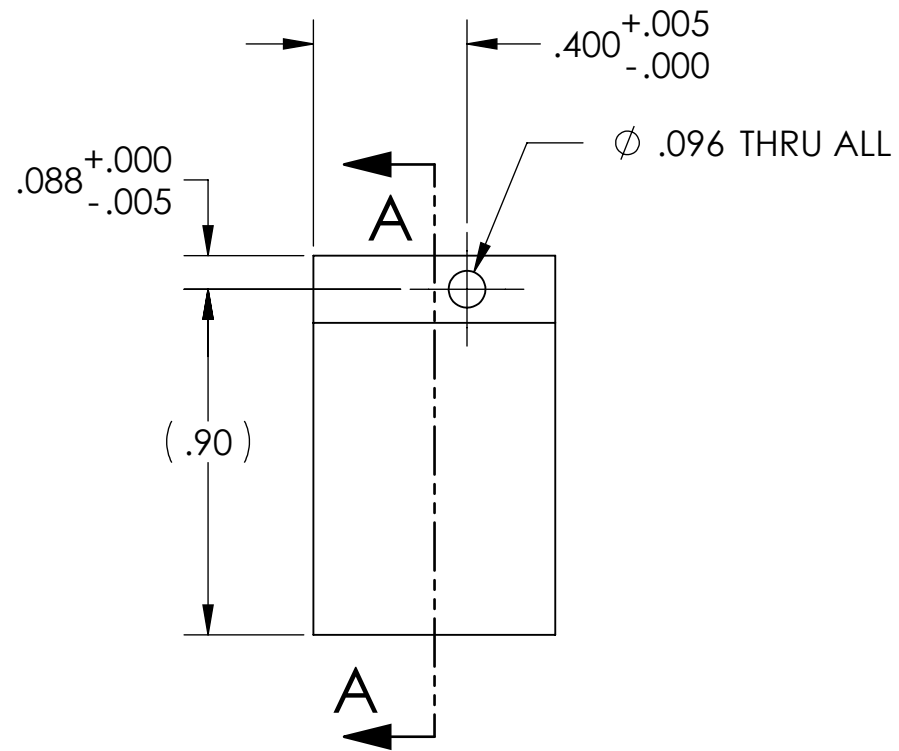


D1001819_RH ELEMENT RETAINER LEFT, PART PDM REV: X-006, DRAWING PDM REV: X-005

NOTES CONTINUED:
 5. SCRIBE, ENGRAVE, OR MECHANICALLY STAMP (NO DYES OR INKS) A UNIQUE THREE DIGIT SERIAL NUMBER & REVISION NUMBER ON EACH PART. SERIAL NUMBERS START AT 001 FOR THE FIRST ARTICLE AND PROCEED CONSECUTIVELY. BAG AND TAG PARTS WITH THEIR DRAWING PART NUMBER, REVISION, VARIANT OR "TYPE" (IF APPLICABLE), AND QUANTITY, IF PARTS ARE TOO SMALL TO SCRIBE. BAGGING AND TAGGING ALONE IS SUFFICIENT.
 EXAMPLE (PART): 001-v1
 EXAMPLE (TAG): DXXXXXX-VY, TYPE-XX, QTY: TBD
 6. PART SHOULD BE THOROUGHLY CLEAN AND DECREASED.

REV.	DATE	DCN #	DRAWING TREE #
v1	04-AUG-2010	E1000291	E1000295-v1
v2	16-SEP-2010	E1000291	E1000295-v2
v3	14-OCT-2010	E1000291	E1000295-v3



NOTES AND TOLERANCES: (UNLESS OTHERWISE SPECIFIED)	
DIMENSIONS ARE IN INCHES	
TOLERANCES: .XX ± .01 .XXX ± .005 ANGULAR ± 0.1°	
MATERIAL	Macor Ceramic
FINISH	32 μinch

CALIFORNIA INSTITUTE OF TECHNOLOGY MASSACHUSETTS INSTITUTE OF TECHNOLOGY	
SYSTEM	ADVANCED LIGO
SUB-SYSTEM	AOS
NEXT ASSY	D1001838, D1001859

PART NAME		RH ELEMENT CONNECTOR, LEFT	
DESIGNER	M. JACOBSON	22 JUN 2010	SIZE DWG. NO.
DRAFTER	A. COLE	7/27/2010	B
CHECKER	C. TORRIE	7/27/2010	D1001819
APPROVAL	P. WILLEMS	7/27/2010	REV. v3
SCALE:	2:1	PROJECTION:	
			SHEET 1 OF 1