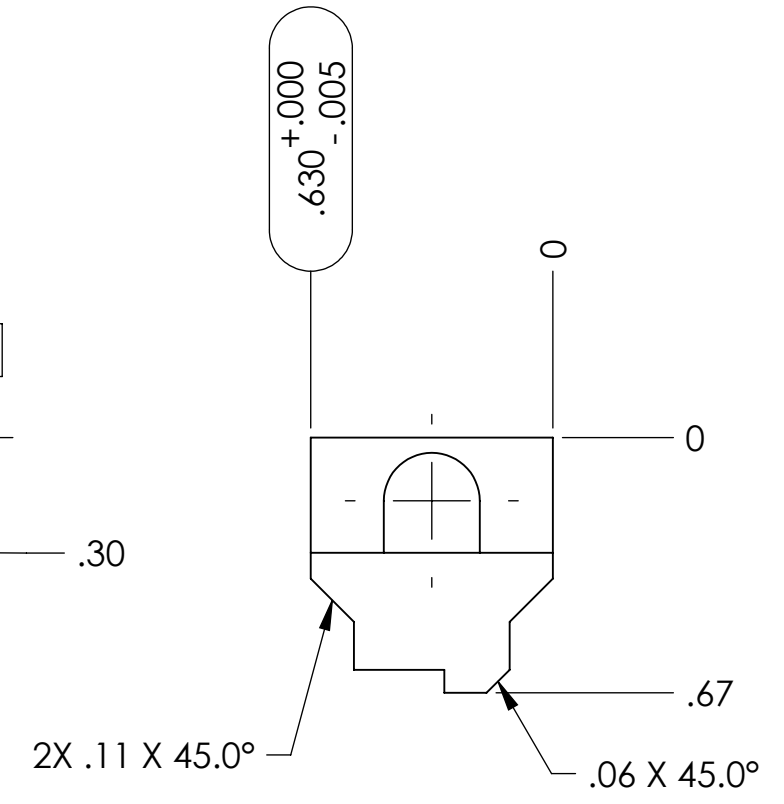
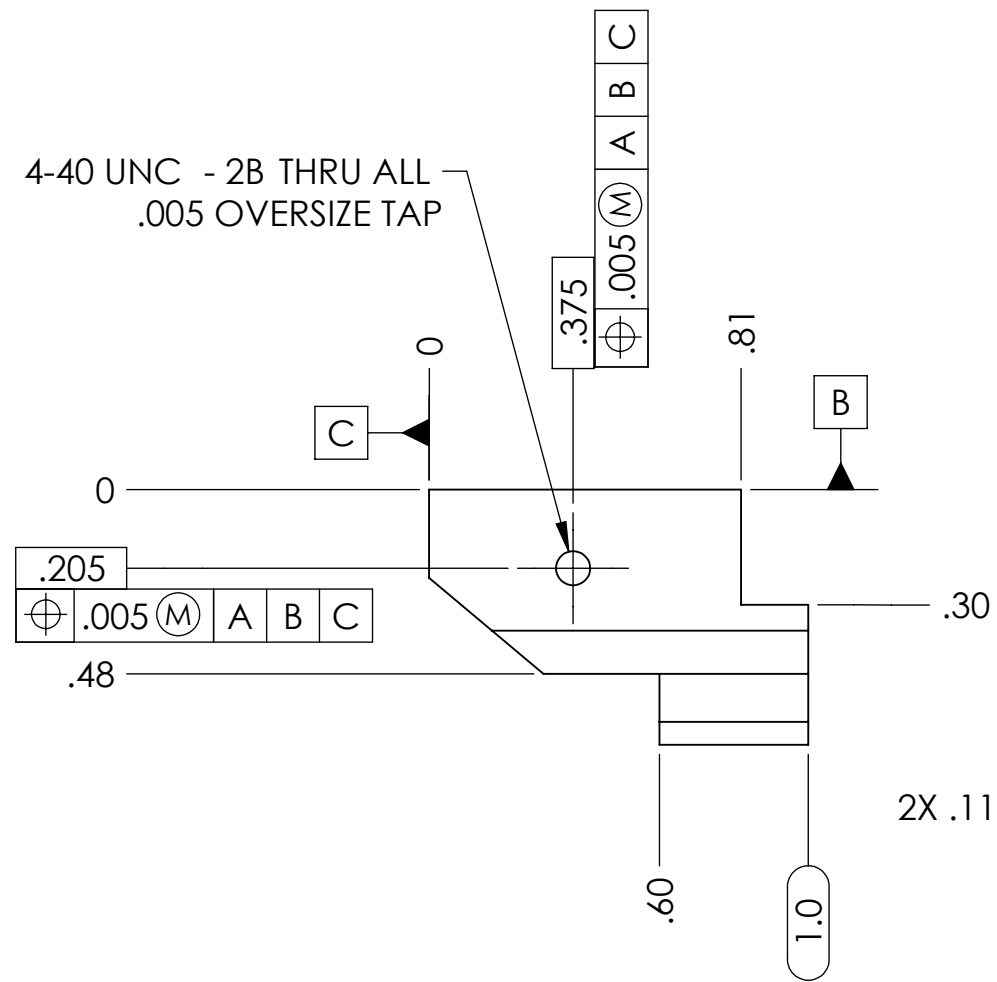
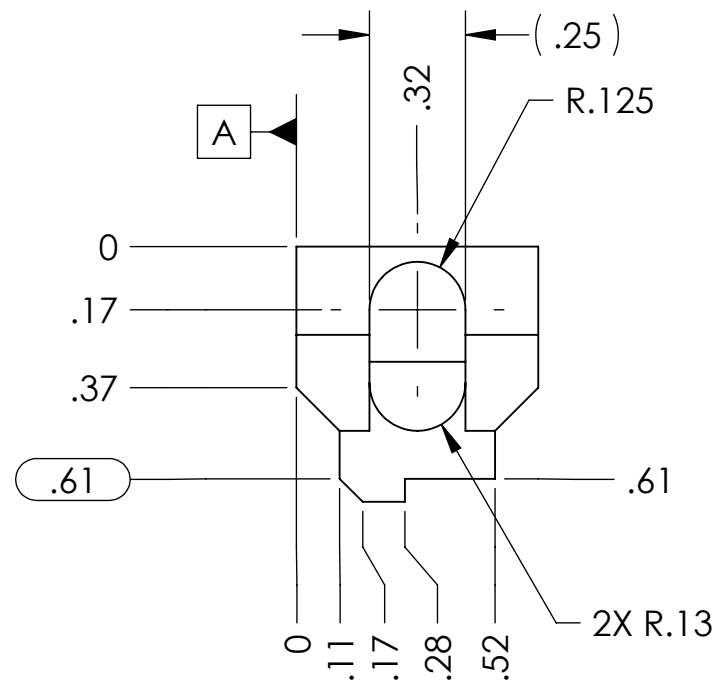
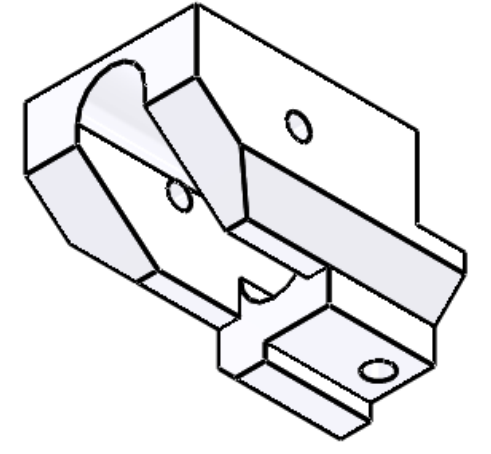
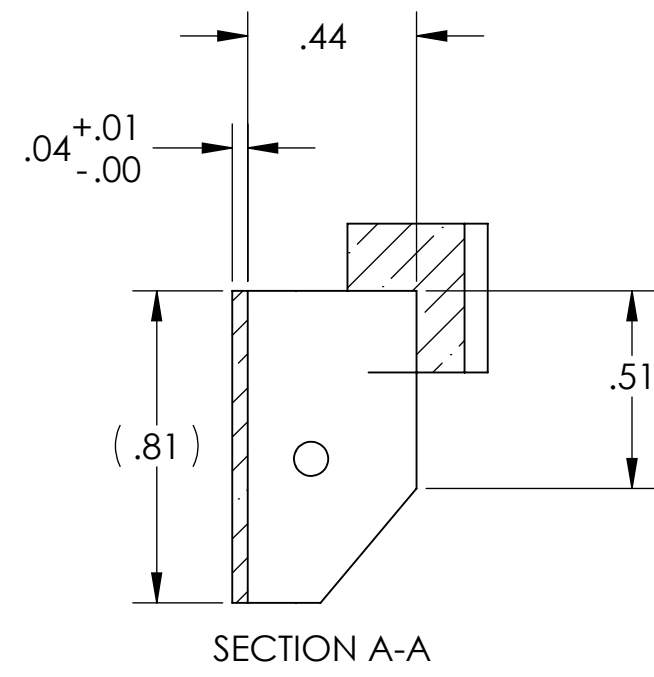
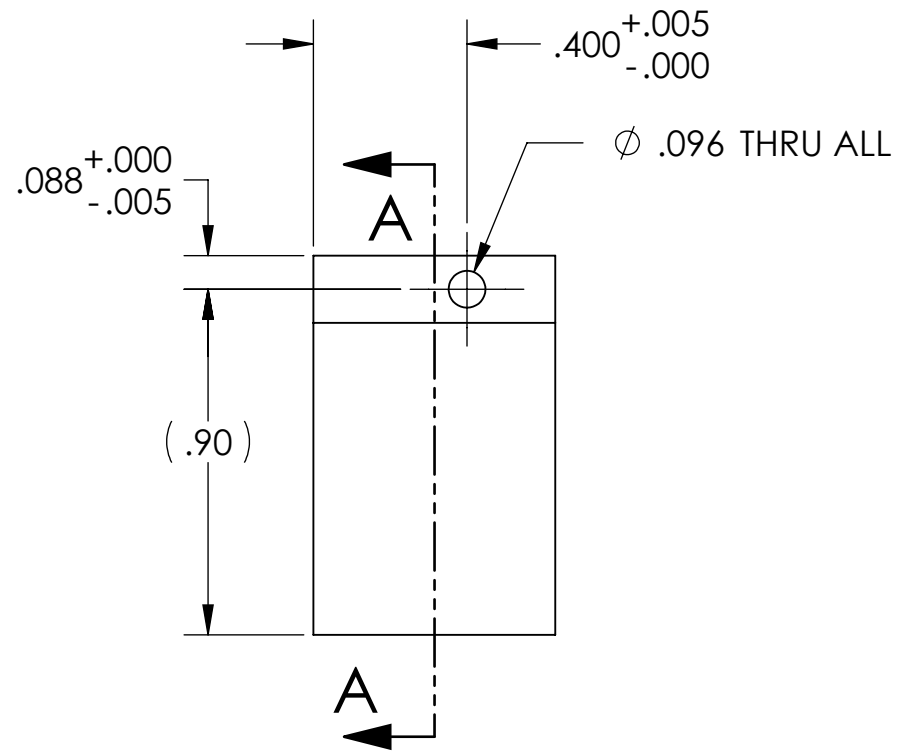


NOTES CONTINUED:
 5. SCRIBE, ENGRAVE, OR MECHANICALLY STAMP (NO DYES OR INKS) A UNIQUE THREE DIGIT SERIAL NUMBER & REVISION NUMBER ON EACH PART. SERIAL NUMBERS START AT 001 FOR THE FIRST ARTICLE AND PROCEED CONSECUTIVELY. BAG AND TAG PARTS WITH THEIR DRAWING PART NUMBER, REVISION, VARIANT OR "TYPE" (IF APPLICABLE), AND QUANTITY, IF PARTS ARE TOO SMALL TO SCRIBE. BAGGING AND TAGGING ALONE IS SUFFICIENT.
 EXAMPLE (PART): 001-v1
 EXAMPLE (TAG): DXXXXXX-VY, TYPE-XX, QTY: TBD
 6. PART SHOULD BE THOROUGHLY CLEAN AND DECREASED.

REV.	DATE	DCN #	DRAWING TREE #
v1	04-AUG-2010	E1000291	E1000295-v1
v2	16-SEP-2010	E1000291	E1000295-v2
-	-	-	-



NOTES AND TOLERANCES: (UNLESS OTHERWISE SPECIFIED)

1. INTERPRET DRAWING PER ASME Y14.5-1994.
 2. REMOVE ALL SHARP EDGES, R.02 MIN.
 3. DO NOT SCALE FROM DRAWING.
 4. ALL MACHINING FLUIDS MUST BE FULLY SYNTHETIC, FULLY WATER SOLUBLE AND FREE OF SULFUR, SILICONE, AND CHLORINE.

DIMENSIONS ARE IN INCHES
 TOLERANCES:
 .XX ± .01
 .XXX ± .005
 ANGULAR ± 0.1°

MATERIAL	Macor Ceramic	FINISH	32 μinch
----------	---------------	--------	----------

CALIFORNIA INSTITUTE OF TECHNOLOGY MASSACHUSETTS INSTITUTE OF TECHNOLOGY		PART NAME		RH ELEMENT CONNECTOR, LEFT	
SYSTEM	ADVANCED LIGO	SUB-SYSTEM	AOS	DESIGNER	M. JACOBSON 22 JUN 2010
NEXT ASSY	D1001838, D1001859	CHECKER	C. TORRIE 7/27/2010	SIZE	DWG. NO.
APPROVAL	P. WILLEMS 7/27/2010	APPROVAL	P. WILLEMS 7/27/2010	B	D1001819
		SCALE:	2:1	PROJECTION:	ASME
				REV.	v2
				SHEET 1 OF 1	

D1001819_RH ELEMENT RETAINER LEFT, PART PDM REV: X-006, DRAWING PDM REV: X-004