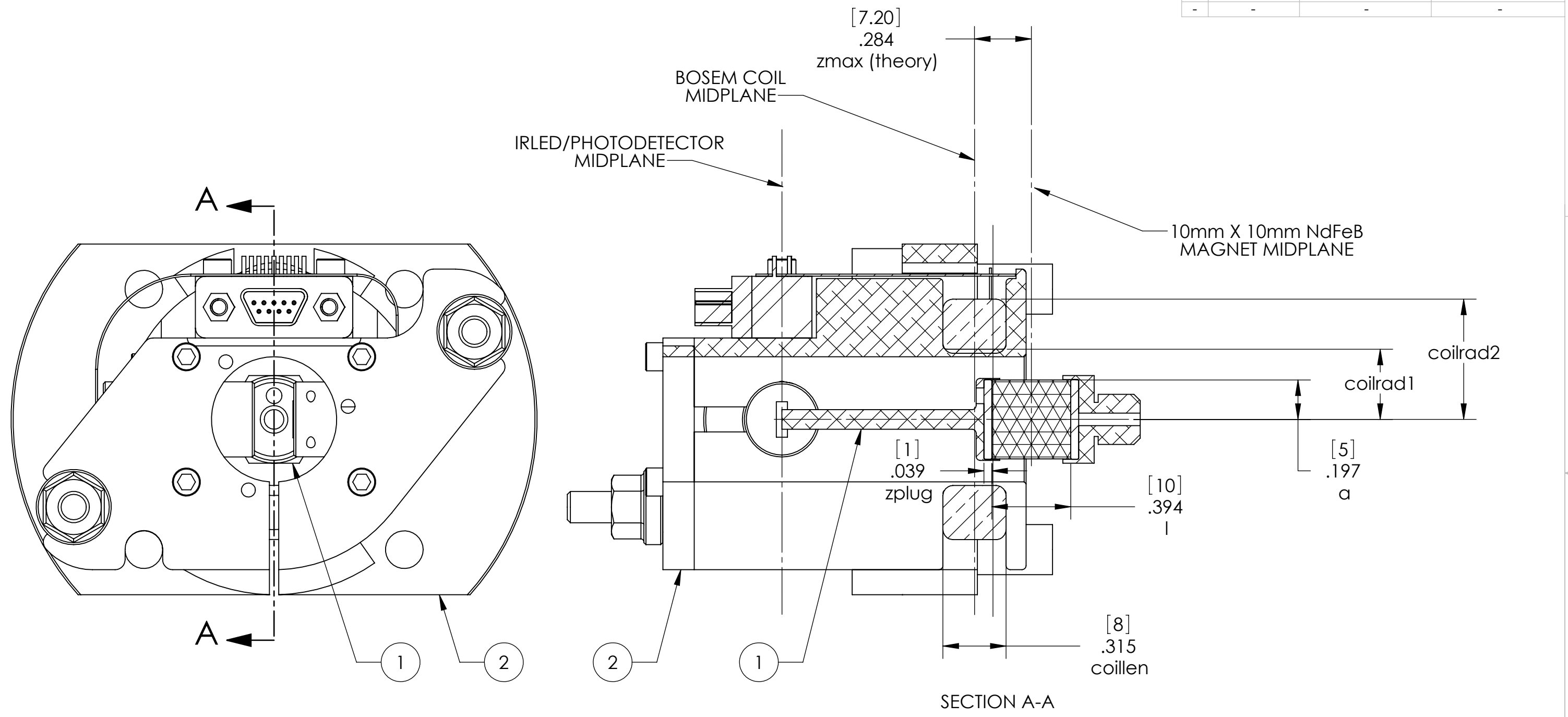


D1001794_Advanced_LIGO_SUS_BOSEM_Magnet_and_Flag_Arrangement_PART PDM REV: X-001_DRAWING PDM REV: X-001

REV.	DATE	DCN #	DRAWING TREE #
v1	18 MAY 2010	E1000166	-
-	-	-	-
-	-	-	-



2	D060218	BIRMINGHAM OSEM ASSY	N/A	1	0	1
1	D1001695	MAGNET AND FLAG ASSY, BOSEM	N/A	1	0	1
ITEM NO.	PART NUMBER	DESCRIPTION	MATERIAL	REQ	SPARE	TOTAL

PARTS LIST

NOTES AND TOLERANCES: (UNLESS OTHERWISE SPECIFIED)

1. INTERPRET DRAWING PER ASME Y14.5-1994.
 2. DO NOT SCALE FROM DRAWING.
 3. REFER TO T1000164 - CALCULATION AND MEASUREMENT OF THE OSEM ACTUATOR SWEET SPOT POSITION FOR DESCRIPTION OF LABELED DIMENSIONS.

DIMENSIONS ARE IN INCHES [MM]

TOLERANCES:
 .XX ± .01
 .XXX ± .005
 ANGULAR ± 0.5°

MATERIAL	N/A	FINISH	N/A μinch
NEXT ASSY	N/A		

LIGO CALIFORNIA INSTITUTE OF TECHNOLOGY
 MASSACHUSETTS INSTITUTE OF TECHNOLOGY

SYSTEM: ADVANCED LIGO SUB-SYSTEM: SUS

DESIGNER	D. BRIDGES	14 JUL 2010	SIZE	DWG. NO.	REV.
DRAFTER	D. BRIDGES	14 JUL 2010	B	D1001794	v1
CHECKER	M. MEYER	16 JUL 2010	SCALE:	2:1	
APPROVAL	M. BARTON	16 JUL 2010	PROJECTION:		SHEET 1 OF 1

PART NAME: BOSEM MAGNET (10mm X 10mm) AND FLAG ARRANGEMENT