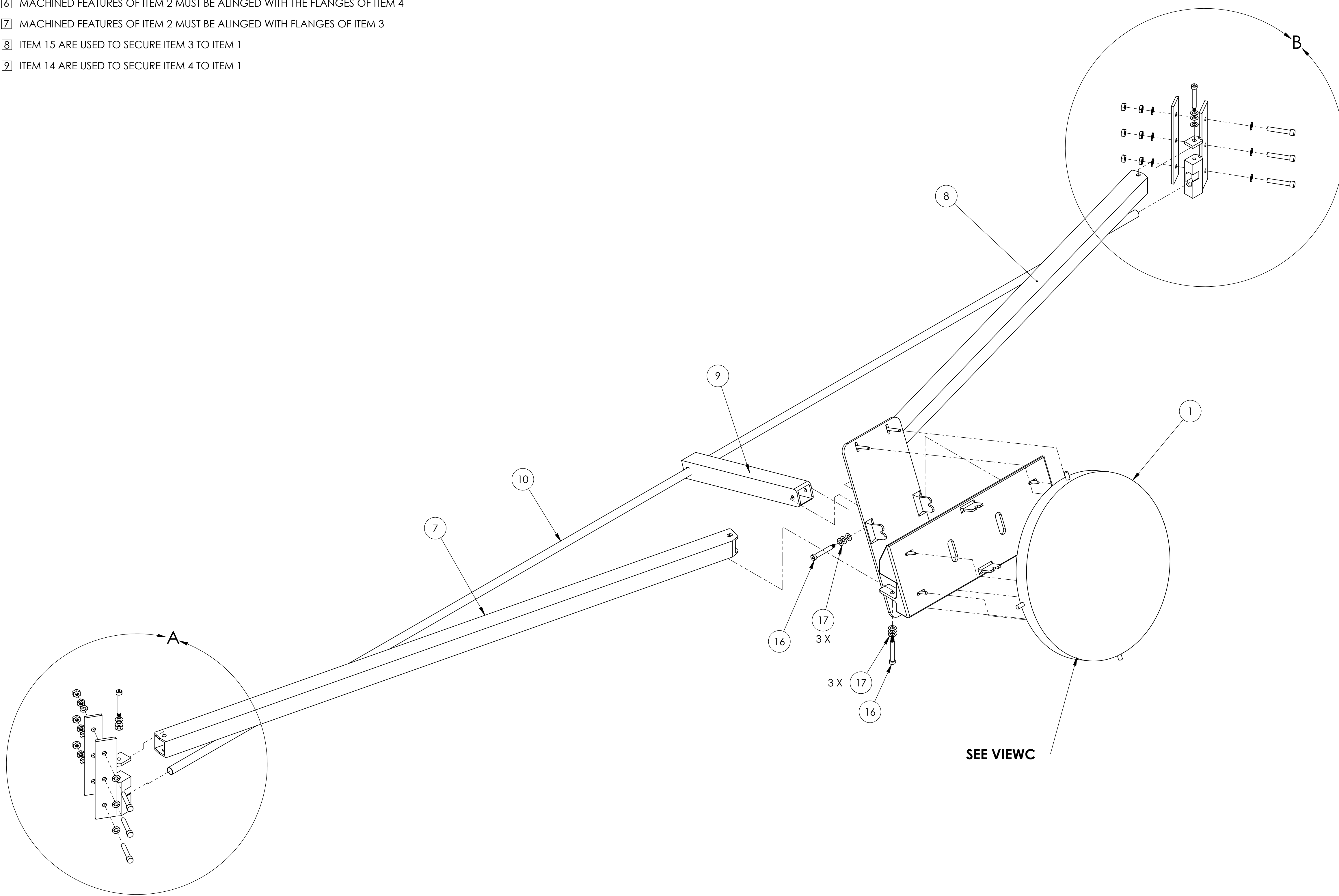


NOTES CONTINUED:

- 5 NUTS ARE USED TO SECURE ASSEMBLY TO INTERIOR FLANGES OF THE BSC WELDMENT ITEMS 19 MUST BE ADJACENT TO ITEMS 17
- 6 MACHINED FEATURES OF ITEM 2 MUST BE ALIGNED WITH THE FLANGES OF ITEM 4
- 7 MACHINED FEATURES OF ITEM 2 MUST BE ALIGNED WITH FLANGES OF ITEM 3
- 8 ITEM 15 ARE USED TO SECURE ITEM 3 TO ITEM 1
- 9 ITEM 14 ARE USED TO SECURE ITEM 4 TO ITEM 1

REV.	DATE	DCN #	DRAWING TREE #
v1	01-OCT-2010	-	-
v2	21-DEC-2010	E1000883-v1	E1000884-v1
v3	17-FEB-2011	E1000883-v2	E1000884-v2



ITEM NO.	PART NUMBER	DESCRIPTION	MATERIAL	REQ	SPARE	TOTAL
19	NJ-2520	HEX JAM NUT, 1/4-20, UC COMPONENTS	18-8 SSSL	6	1	7
18	D1003328	ALIGO TCS UHV H2 ASSEMBLY INTERFACE DAMPER	VITON	2	2	4
17	WFV-25	WASHER, FLAT, VENTED, .26ID X.47ODX .032TK, UC COMPONENTS	18-8 SSSL, Ag PLATED	27	3	30
16	SHCV-4436	SSHD, #10-32 UNC-A X 1.5 LG, VENTED, UC-COMPONENTS	303 SSSL	5	1	6
15	C-822-A	SSHC, #8-32 UNC-2A X 1-3/8 LG, VENTED, UC-COMPONENTS	18-8 SSSL, Ag PLATED	4	1	5
14	C-816-A	SSHC, #8-32 UNC-2A X 1 LG, VENTED, UC-COMPONENTS	18-8 SSSL, Ag PLATED	4	1	5
13	WFV-08	WASHER, FLAT, VENTED, #8-U-C COMPONENTS	18-8 SSSL	8	2	10
12	N-2520-A	NUT, HEX, 1/4-20, UC-COMPONENTS	18-8 SSSL	6	1	7
11	C-2024-N	SSHC, 1/4-20 UNC-2A X 1.5 LONG, UC COMPONENTS	18-8 SSSL	6	1	7
10	D1002334	TCS UHV COARSE ADJUST PIVOT ROD	ALSI 316 ANNEALED SSSL BAR	1		1
9	D1002333	TCS UHV BACK BRACE, BSC7 & BSC8	6063-T5	1		1
8	D1002327	TCS UHV SHORT SUPPORT, BSC7 & BSC8	6063-T5	1		1
7	D1002317	TCS UHV LONG SUPPORT, BSC7 & BSC8	6063-T5	1		1
6	D1002315	TCS UHV BRACKET, SHORT SIDE, BSC7	ALSI 304	1		1
5	D1002287	TCS UHV BRACKET, LONG SIDE, BSC7	ALSI 304	1		1
4	D1002312	AZ FINE ADJUST PIVOT PLATE, BSC7	6061-T6	1		1
3	D1002311	EL FINE ADJUST PIVOT PLATE	6061-T6	1		1
2	D1002313	ALIGO TCS UHV FINE ADJUST PIVOT ROD	ALSI 304	2		2
1	D1001727	ALIGO TCS H2 IN-VAC MIRROR	Copper	1		1

PARTS LIST

NOTES AND TOLERANCES: (UNLESS OTHERWISE SPECIFIED)	
1. INTERPRET DRAWING PER ASME Y14.5-1994.	
2. REMOVE ALL SHARP EDGES, R.02 MIN.	
3. DO NOT SCALE FROM DRAWING.	
4. ALL MACHINING FLUIDS MUST BE FULLY SYNTHETIC, FULLY WATER SOLUBLE AND FREE OF SULFUR, SILICONE, AND CHLORINE.	
DIMENSIONS ARE IN INCHES	
TOLERANCES:	
.XX ±	
.XXX ±	
ANGULAR ± °	
MATERIAL	N/A
FINISH	N/A μinch

**ALIGO** CALIFORNIA INSTITUTE OF TECHNOLOGY  
MASSACHUSETTS INSTITUTE OF TECHNOLOGY

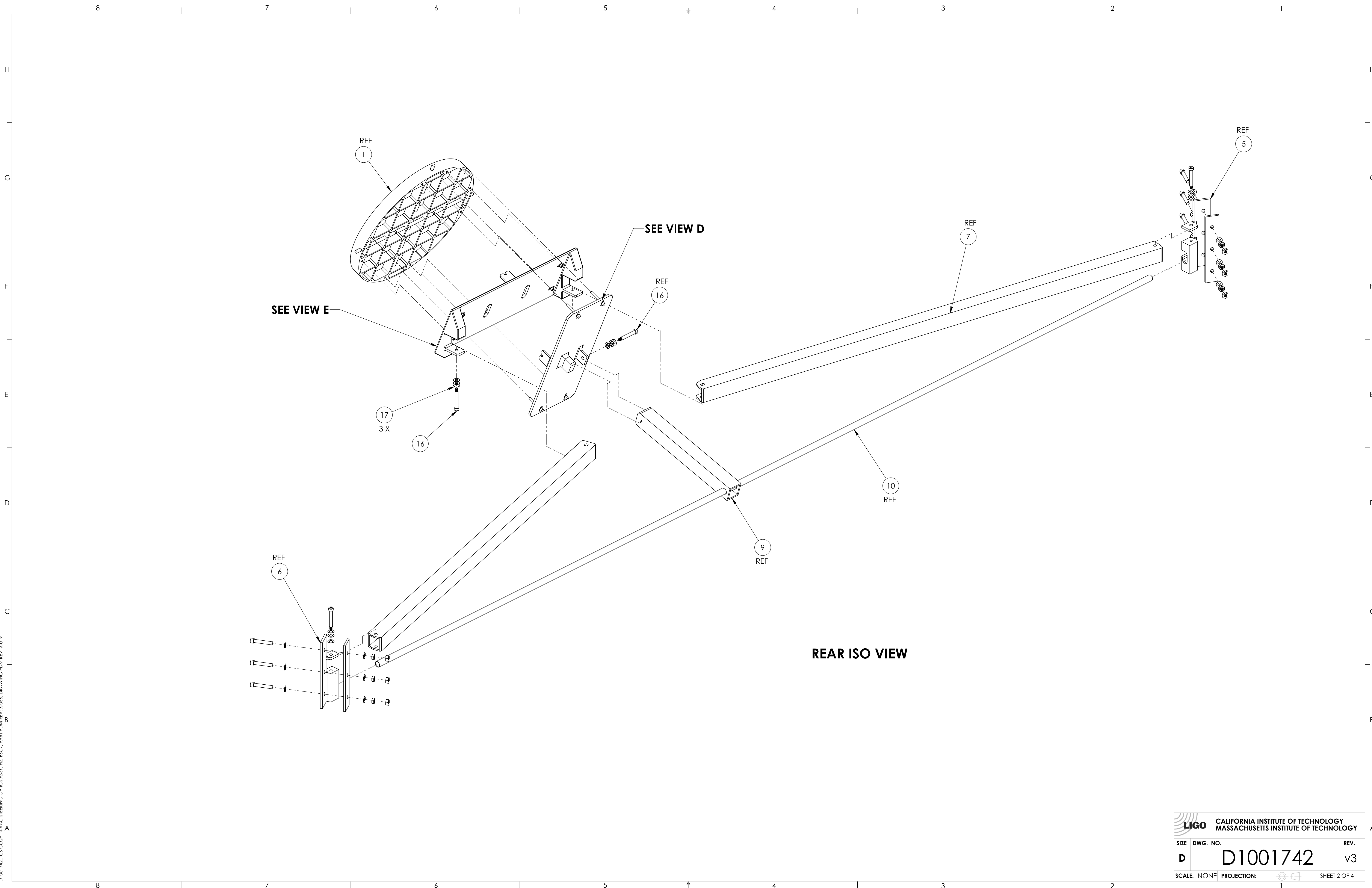
SYSTEM: ADVANCED LIGO SUB-SYSTEM: AOS

NEXT ASSY: D0900405

PART NAME: TCS CO2P IN-VAC STEERING OPTICS ASSY, H2, BSC7

DESIGNER	M. JACOBSON	18 MAY 2010	SIZE	DWG. NO.	REV.
DRAFTER	A. COLE	01-OCT-2010	D	D1001742	v3
CHECKER	J. LEWIS	17-FEB-2011			
APPROVAL	C. TORRIE	11-FEB-2011	SCALE: NONE	PROJECTION:	SHEET 1 OF 4

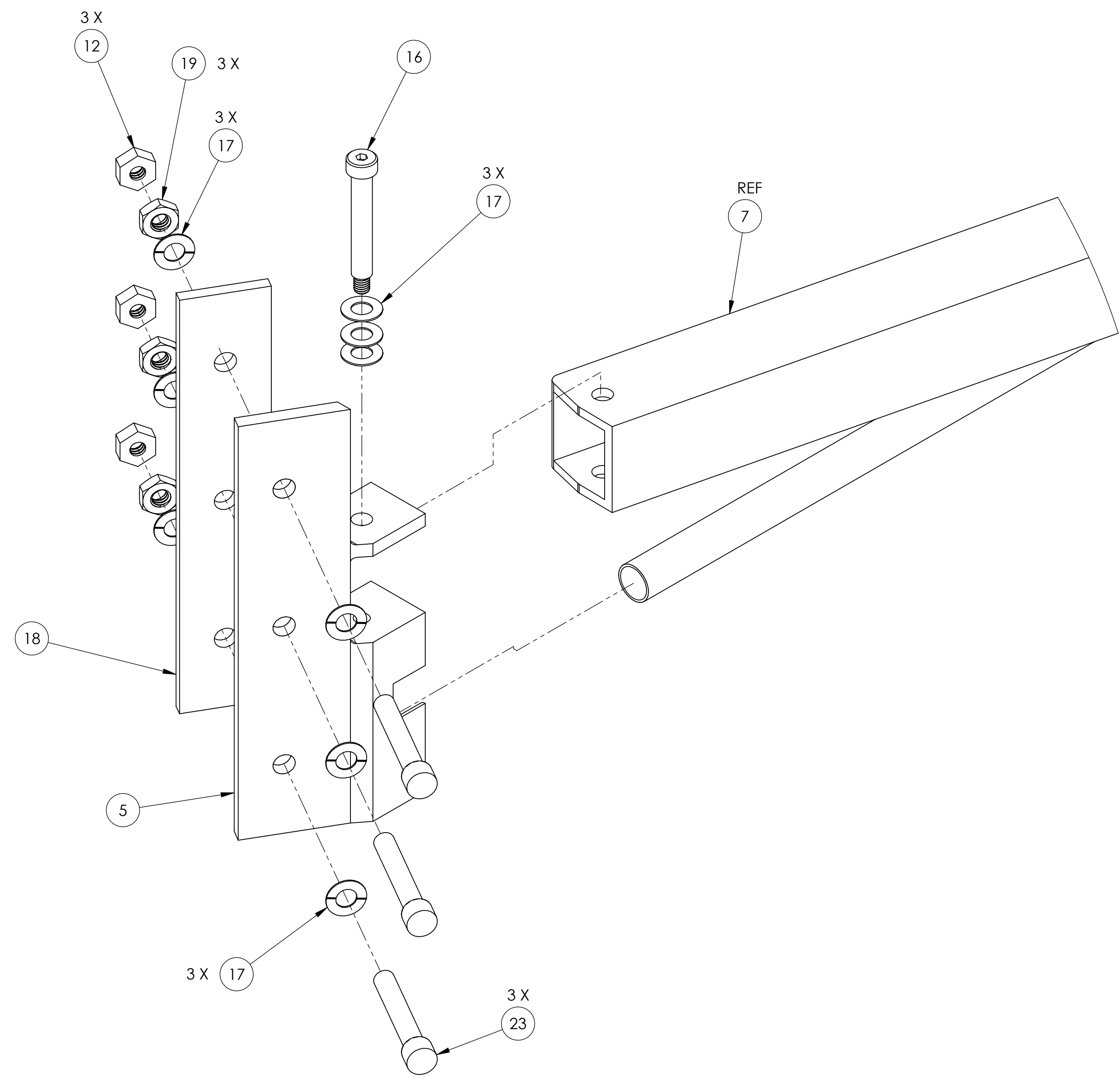
D1001742, TCS CO2P IN-VAC STEERING OPTICS ASSY, H2, BSC7, PART FROM REV. X-056, DRAWING FROM REV. X-019



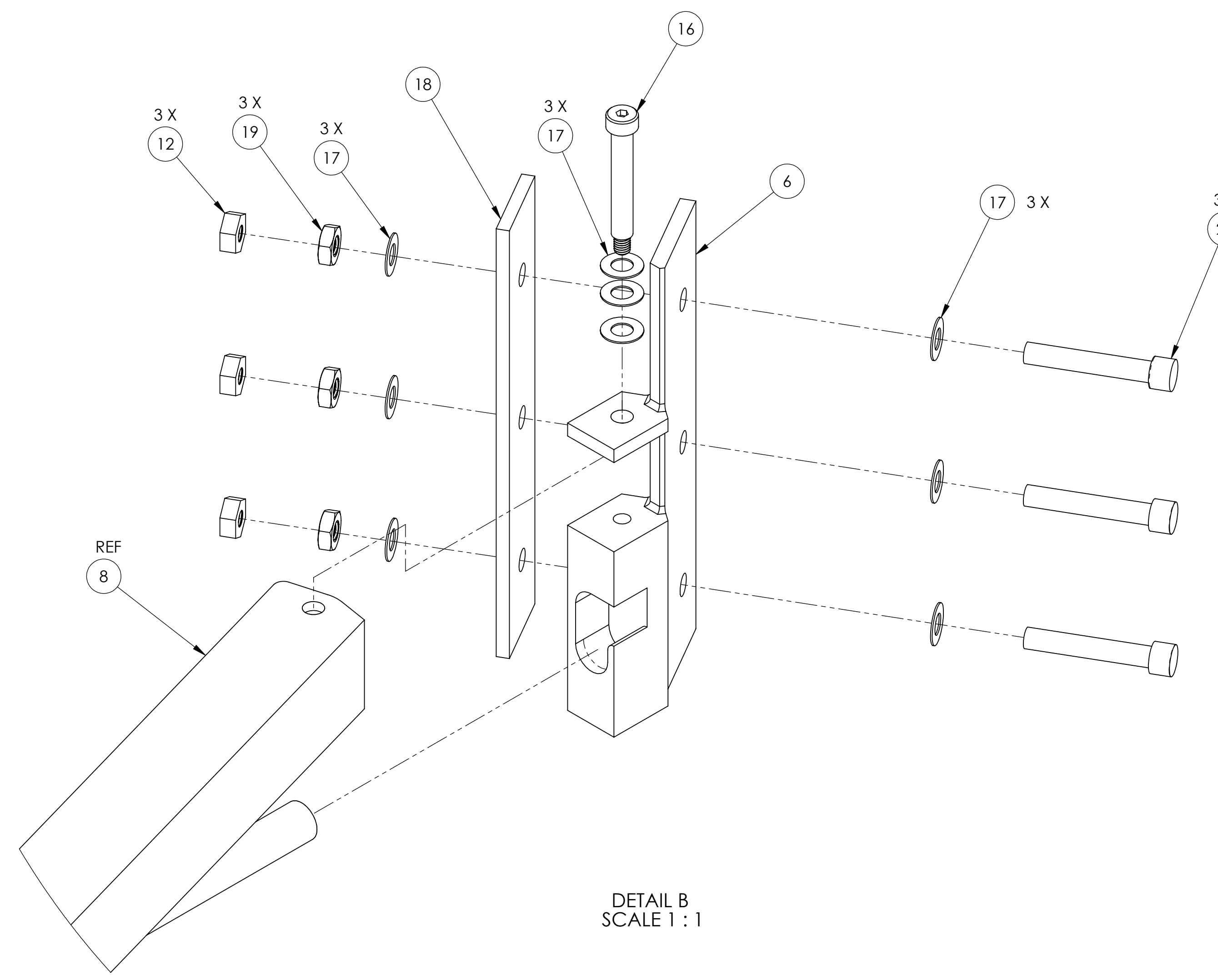
**REAR ISO VIEW**

		CALIFORNIA INSTITUTE OF TECHNOLOGY MASSACHUSETTS INSTITUTE OF TECHNOLOGY	
SIZE	DWG. NO.	REV.	
D	D1001742	v3	
SCALE: NONE		PROJECTION:	SHEET 2 OF 4

D1001742\_ICS COPR IN VAC STEERING OPTICS ASSY\_HZ\_BECT PART PDM REV X-056 DRAWING PDM REV X-019



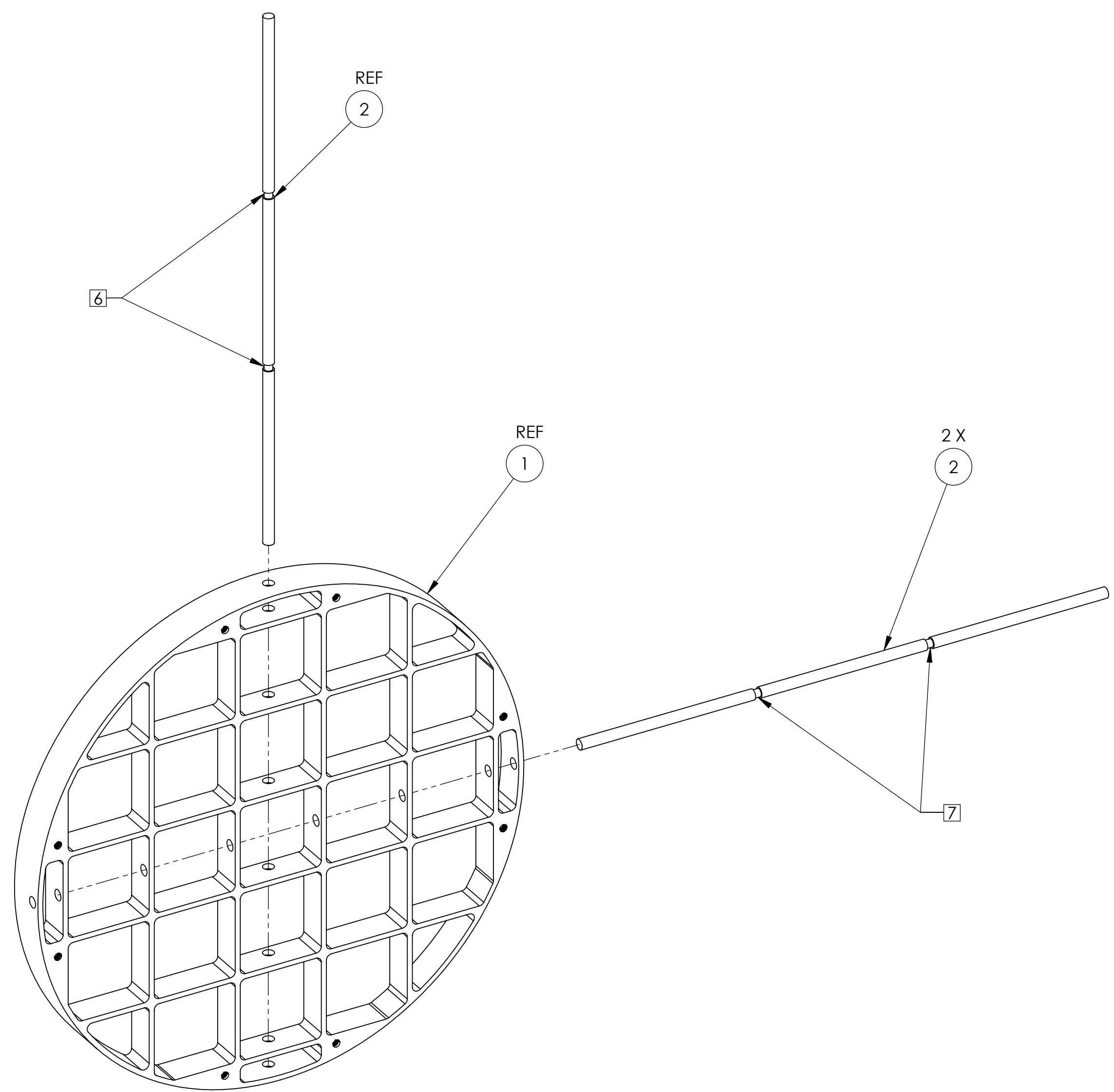
DETAIL A  
SCALE 1:1



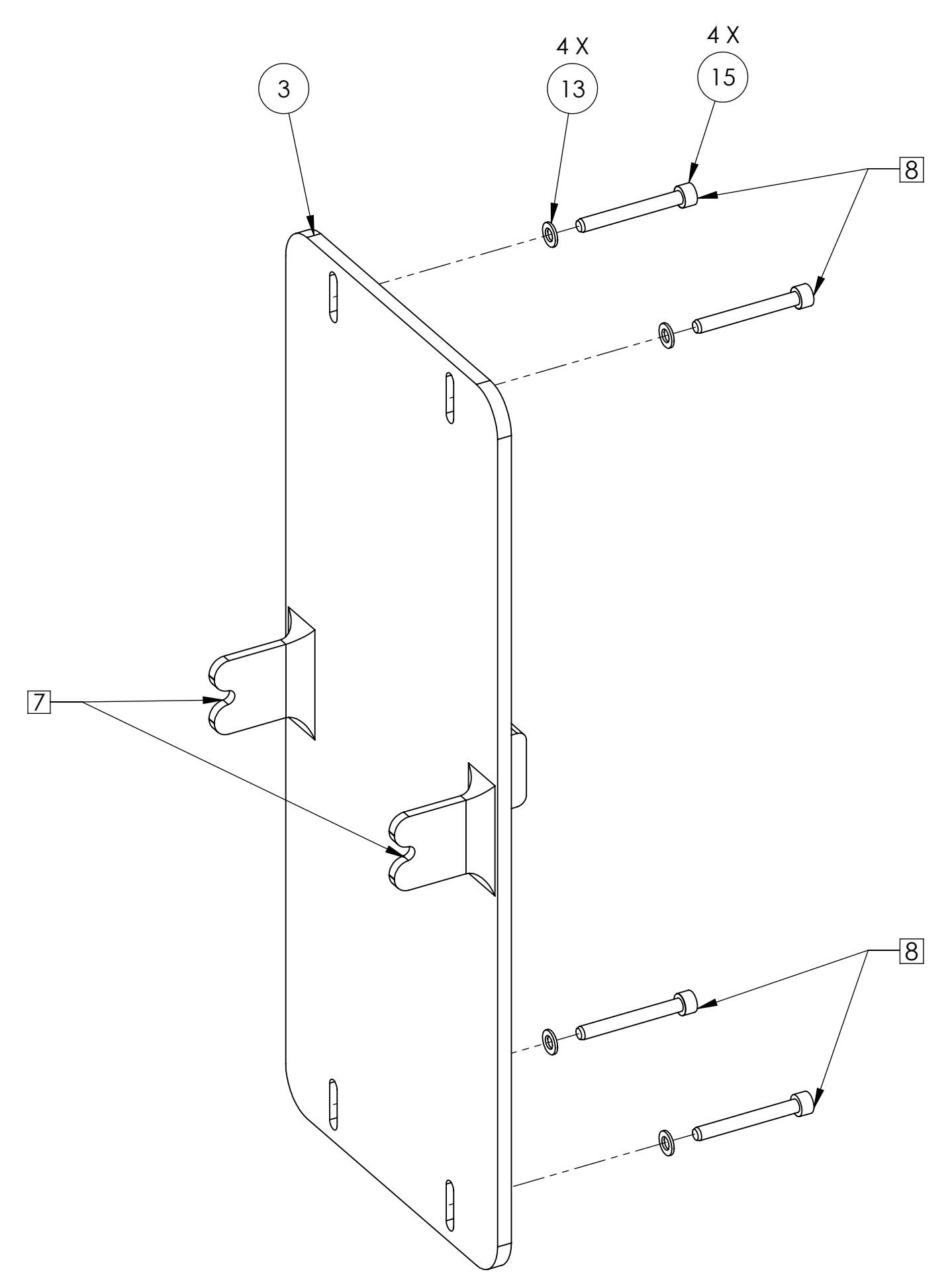
DETAIL B  
SCALE 1:1

CALIFORNIA INSTITUTE OF TECHNOLOGY MASSACHUSETTS INSTITUTE OF TECHNOLOGY		
SIZE	DWG. NO.	REV.
D	D1001742	v3
SCALE: NONE PROJECTION:		SHEET 3 OF 4

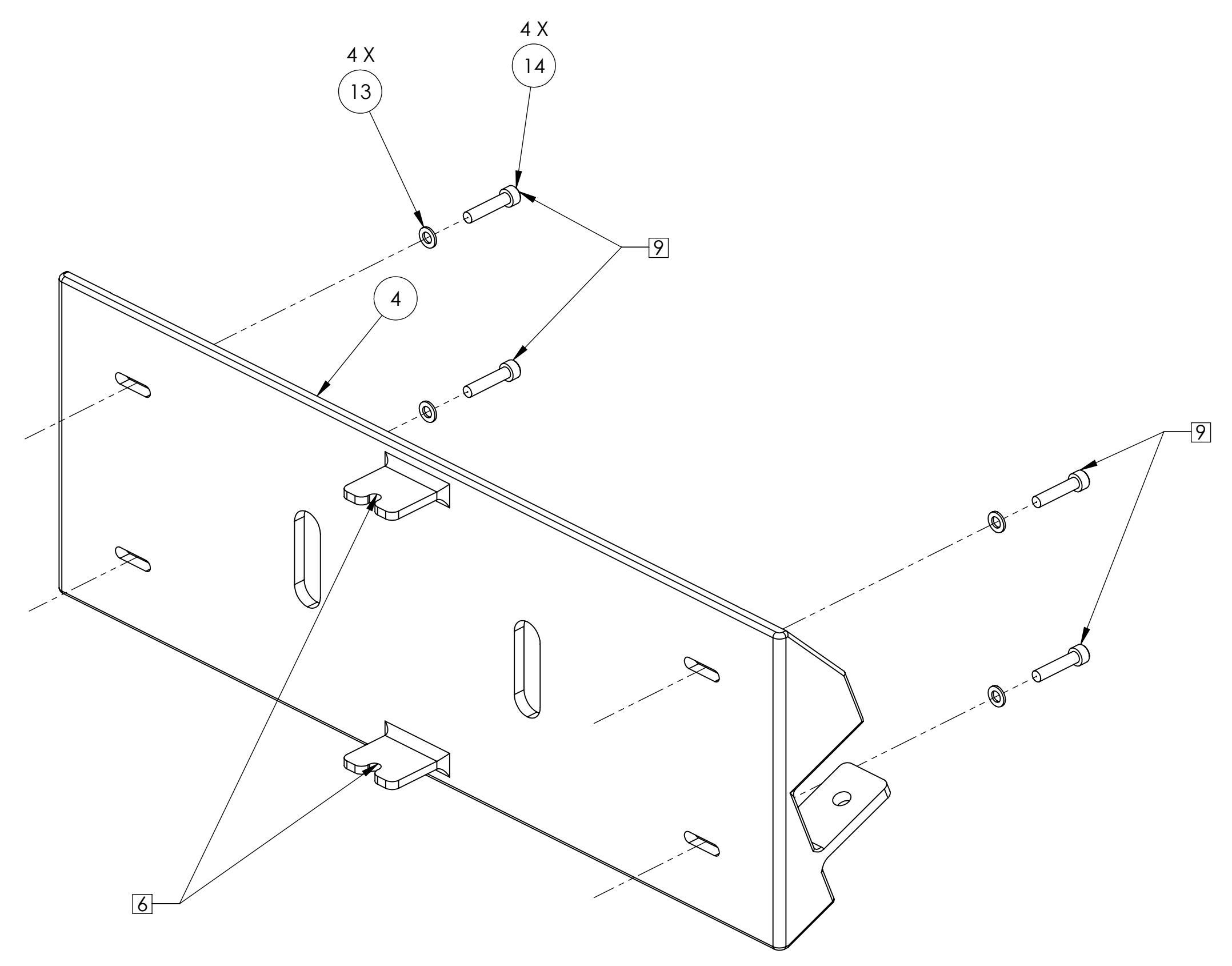
D1001742, ICS COOP IN VAC STEERING OPTICS ASSY, HZ, BECT, PART PDM REV. X-B6, DRAWING PDM REV. X-019



**VIEW C**



**VIEW D**



**VIEW E**

		CALIFORNIA INSTITUTE OF TECHNOLOGY MASSACHUSETTS INSTITUTE OF TECHNOLOGY	
SIZE	DWG. NO.	REV.	
D	D1001742	v3	
SCALE: NONE		PROJECTION:	SHEET 4 OF 4

D1001742, ICS COOP IN VAC STEERING OPTICS ASSY, HZ, BECT, PART PDM, REV. X-023, DRAWING PDM, REV. X-019