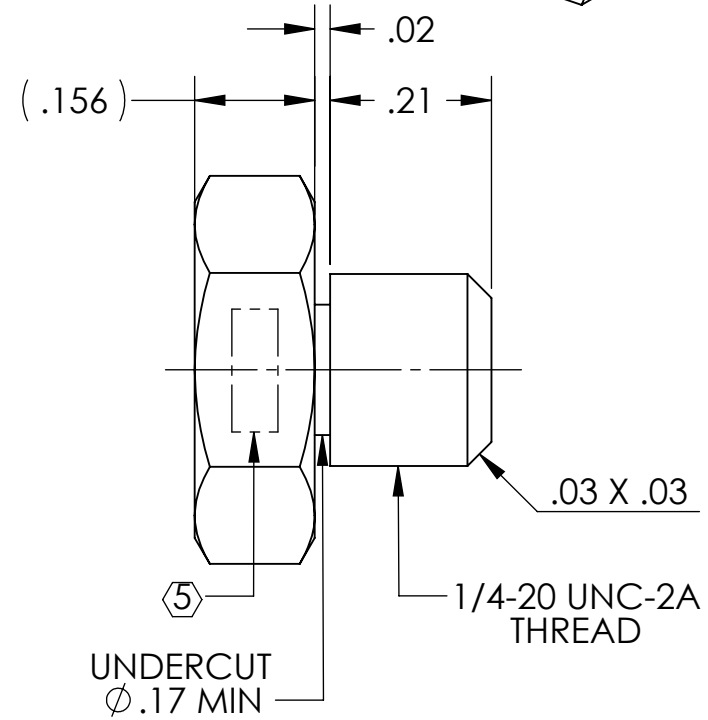
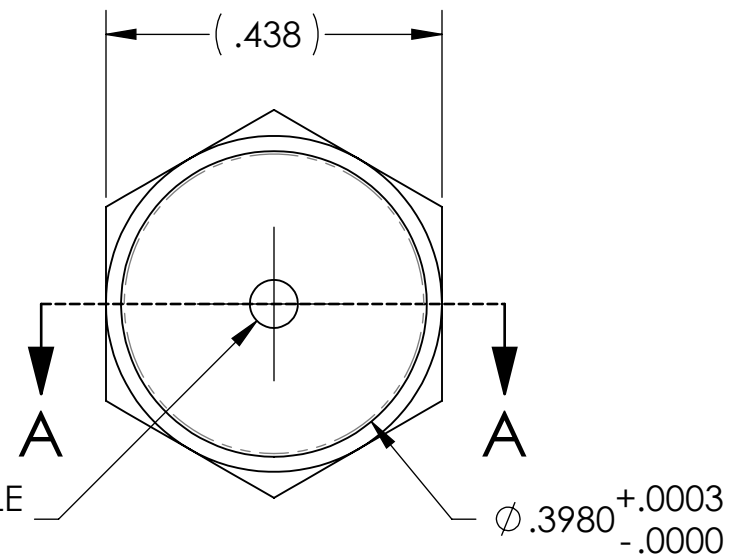
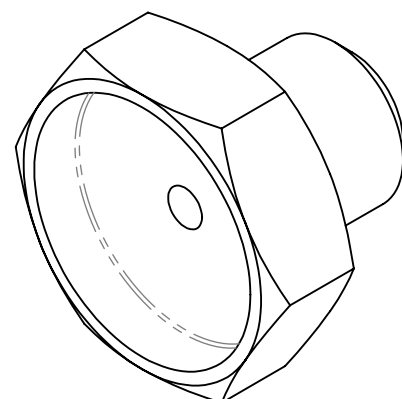
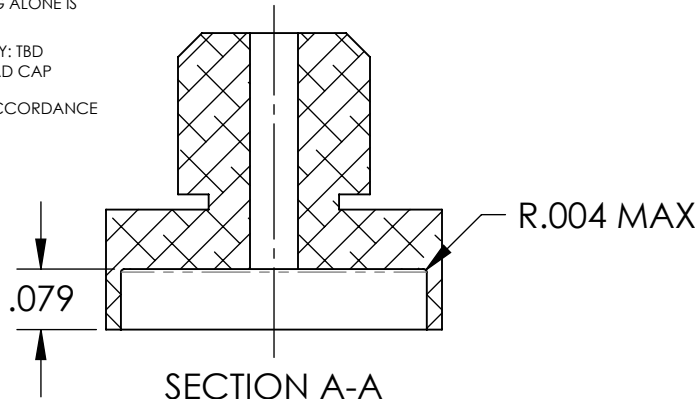


NOTES CONTINUED:

- 5. SCRIBE, ENGRAVE, OR MECHANICALLY STAMP (NO DYES OR INKS) A UNIQUE THREE DIGIT SERIAL NUMBER & REVISION NUMBER ON EACH PART. SERIAL NUMBERS START AT 001 FOR THE FIRST ARTICLE AND PROCEED CONSECUTIVELY. BAG AND TAG PARTS WITH THEIR DRAWING PART NUMBER, REVISION, VARIANT OR "TYPE" (IF APPLICABLE), AND QUANTITY. IF PARTS ARE TOO SMALL TO SCRIBE, BAGGING AND TAGGING ALONE IS SUFFICIENT.
EXAMPLE (PART): 001-v1
EXAMPLE (TAG): DXXXXXX-VY, TYPE-XX, QTY: TBD
- 6. PART IS TO BE MADE FROM STOCK HEX HEAD CAP SCREW, 1/4-20 UNC-2A, FULLY THREADED.
- 7. ALL PARTS SHALL BE MANUFACTURED IN ACCORDANCE WITH LIGO SPECIFICATION E0900364.

REV.	DATE	DCN #	DRAWING TREE #
v1	18 MAY 2010	E1000166	-
-	-	-	-
-	-	-	-



NOTES AND TOLERANCES: (UNLESS OTHERWISE SPECIFIED)

DIMENSIONS ARE IN INCHES	1. INTERPRET DRAWING PER ASME Y14.5-1994.
TOLERANCES: .XX ± .01 .XXX ± .005	2. REMOVE ALL SHARP EDGES, R.02 MIN.
ANGULAR ± 0.5°	3. DO NOT SCALE FROM DRAWING.
	4. ALL MACHINING FLUIDS MUST BE FULLY SYNTHETIC, FULLY WATER SOLUBLE AND FREE OF SULFUR, SILICONE, AND CHLORINE.
MATERIAL	316 SSTL 6
FINISH	32 μinch

LIGO CALIFORNIA INSTITUTE OF TECHNOLOGY
MASSACHUSETTS INSTITUTE OF TECHNOLOGY

SYSTEM: **ADVANCED LIGO** SUB-SYSTEM: **SUS**

NEXT ASSY: **MULTIPLE ASSYS**

PART NAME		MAGNET RETAINER, BOSEM	
DESIGNER	D. BRIDGES	13 JUL 2010	SIZE DWG. NO.
DRAFTER	D. BRIDGES	14 JUL 2010	A D1001697
CHECKER	M. MEYER	16 JUL 2010	REV.
APPROVAL			v1
SCALE: 4:1		PROJECTION:	SHEET 1 OF 1