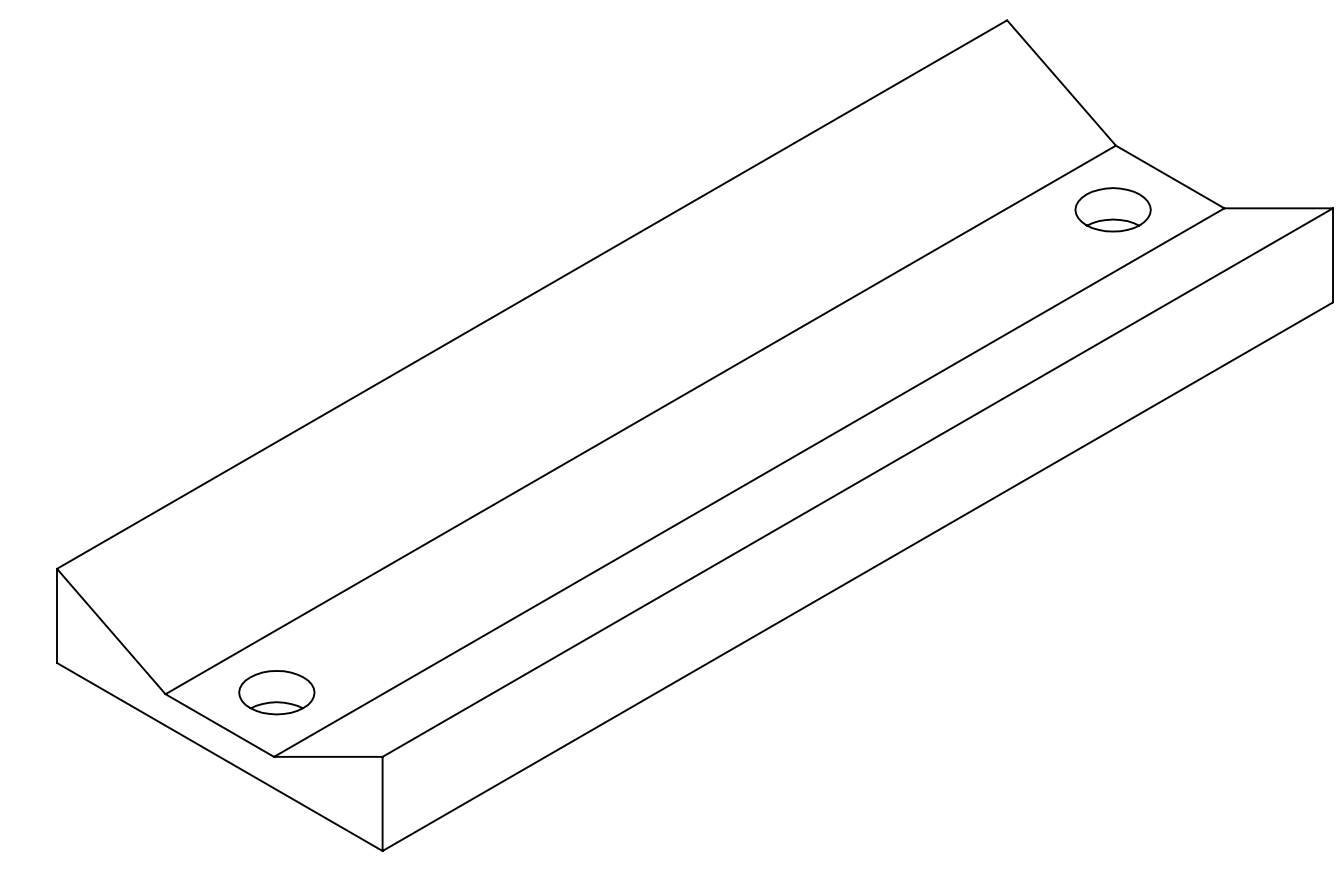
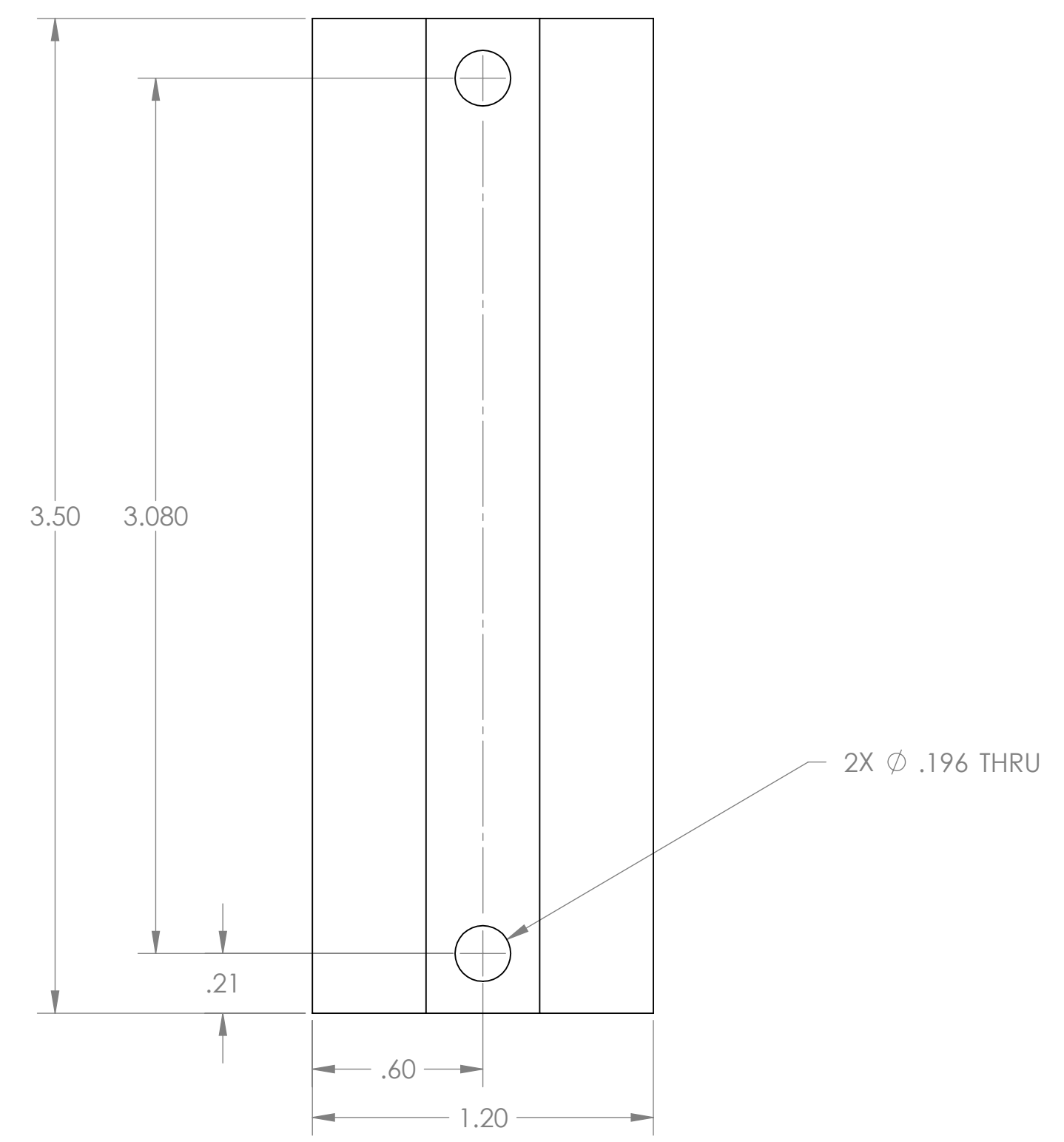
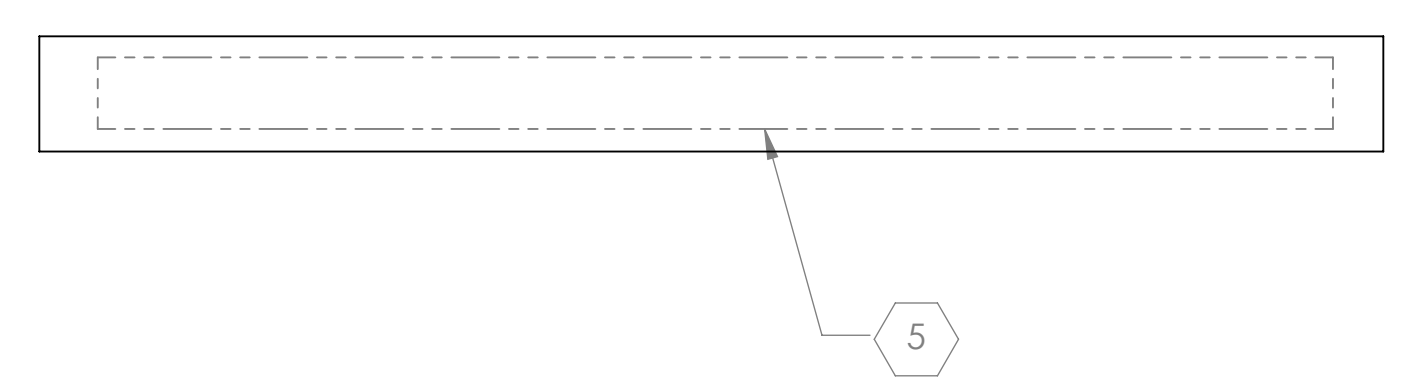
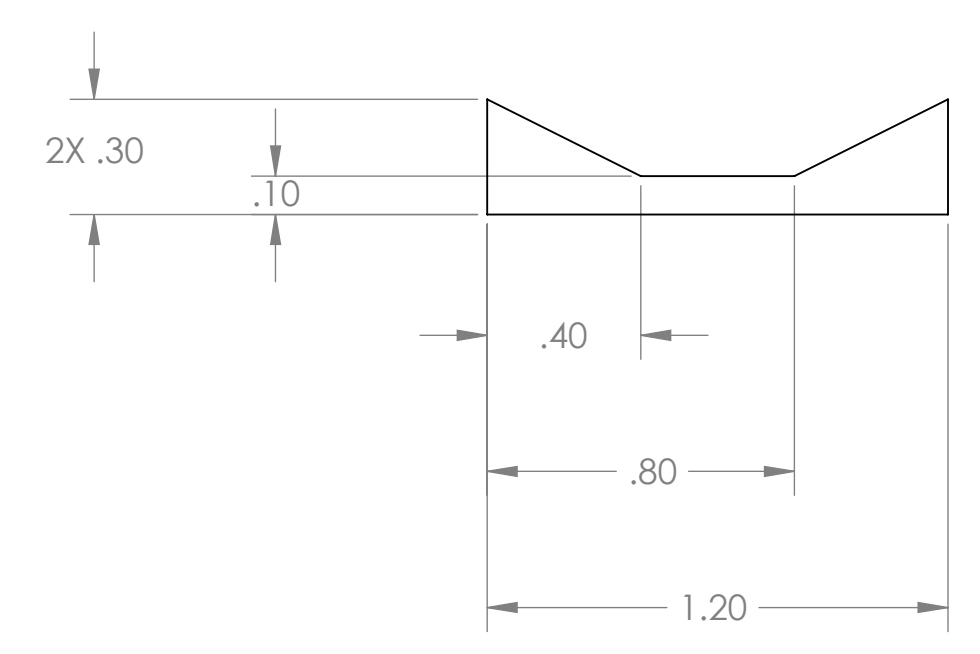


NOTES CONTINUED:
 ⑤ SCRIBE, ENGRAVE, OR MECHANICALLY STAMP (NO INKS OR DYES) DRAWING PART NUMBER, REVISION (AND VARIANT OR TYPE IF APPLICABLE) ON NOTED SURFACE OF PART FOLLOWED ON THE NEXT LINE WITH A THREE DIGIT SERIAL NUMBER. SERIAL NUMBERS START AT 001 FOR THE FIRST ARTICLE AND PROCEED CONSECUTIVELY. USE MINIMUM 0.12" HIGH CHARACTERS, UNLESS THE SIZE OF THE PART DICTATES SMALLER CHARACTERS. A VIBRATORY TOOL MAY BE USED. EXAMPLE: DXXXXXX-VY, TYPE-XX, S/N XXX

REV.	DATE	DCN #	DRAWING TREE #
v1	26 JULY 2010	E1000182-v1	-
-	-	-	-
-	-	-	-



ISO VIEW



NOTES AND TOLERANCES: (UNLESS OTHERWISE SPECIFIED)				LIGO CALIFORNIA INSTITUTE OF TECHNOLOGY MASSACHUSETTS INSTITUTE OF TECHNOLOGY		PART NAME		
DIMENSIONS ARE IN INCHES TOLERANCES: .XX ± .01 .XXX ± .005 ANGULAR ± 1.0°				1. INTERPRET DRAWING PER ASME Y14.5-1994. 2. REMOVE ALL SHARP EDGES, R.02 MIN. 3. DO NOT SCALE FROM DRAWING. 4. ALL MACHINING FLUIDS MUST BE FULLY SYNTHETIC, FULLY WATER SOLUBLE AND FREE OF SULFUR, SILICONE, AND CHLORINE.		ADVANCED LIGO		ALIGO AOS OPLEV AUXILIARY VIEW FINDER TELESCOPE MOUNT
						MATERIAL 6061-T6 Al		FINISH 63 μinch
				SYSTEM AOS		DESIGNER N. KILPATRICK 26 JULY 2010		
				NEXT ASSY D1000308		CHECKER N. KILPATRICK 26 JULY 2010		
						APPROVAL		
						SCALE: 2:1 PROJECTION:		
						SHEET 1 OF 1		

D:\001\670.dwg AOS Oplev Auxiliary View Finder Telescope Mount PART PDM REV: X-014 DRAWING PDM REV: X-015