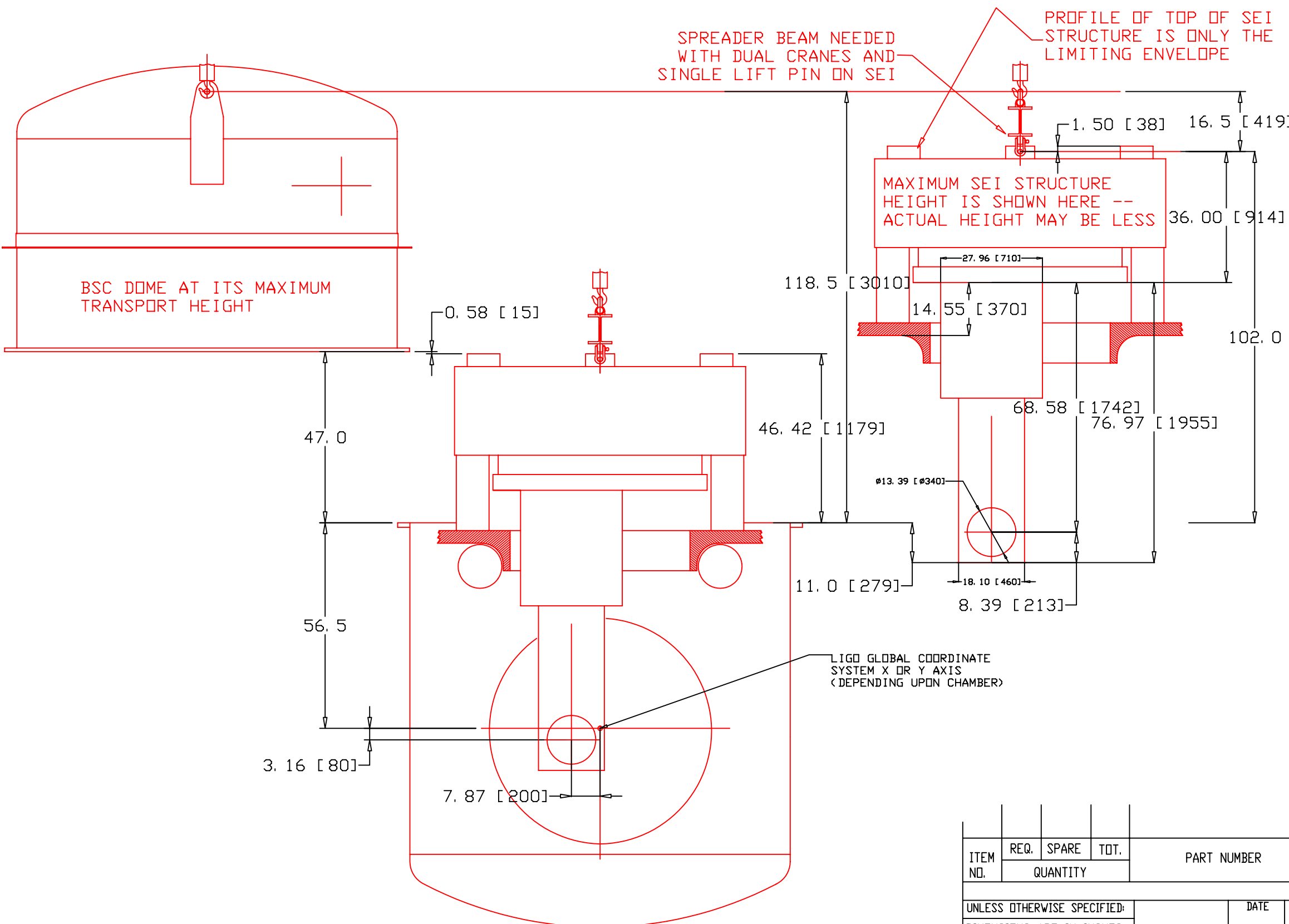


REV.	DATE	DCN #	DRAWING TREE #
00	31OCT2003	NA	NA
01	25JUN2005	NA	NA



NOTES:
 1) ALL DIMENSIONS ARE INCHES [MM]
 2) AT LASTI, DUE TO THE LOWER HOOK HEIGHT COMPARED TO THE LIGO OBSERVATORIES, THE QUAD SUSPENSION MUST BE INSTALLED IN 2 STEPS. THE UPPER SUS STRUCTURE IS ATTACHED TO THE SEI OPTICS TABLE AND INSTALLED WITH THE SEI SYSTEM. THE LOWER SUS STRUCTURE IS INSTALLED THROUGH THE BSC CHAMBER DOOR.
 3) THE DOME JUST BARELY CLEARS THE MAXIMUM ENVELOPE FOR THE INSTALLED SEI SYSTEM (WITHOUT TILTING). THE ACTUAL SEI SYSTEM HEIGHT MAY BE LOWER.

ITEM NO.	REQ.	SPARE	TOT.	PART NUMBER	DESCRIPTION	SUPPLIER
PARTS LIST						
UNLESS OTHERWISE SPECIFIED: DIMENSIONS ARE IN INCHES				DATE	NAME	CALIFORNIA INSTITUTE OF TECHNOLOGY MASSACHUSETTS INSTITUTE OF TECHNOLOGY
TOLERANCES: .XX±; .XXX±; ANGULAR:±				DRAWN	25JUN2005 D. COYNE	
MATERIAL				COMMENTS:		SYSTEM
FINISH						SUB-SYSTEM
						NEXT ASSY
						DWG NAME
						SIZE
						DWG. NO.
						REV
						01
						SHEET 1 OF 1