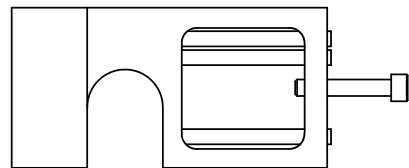
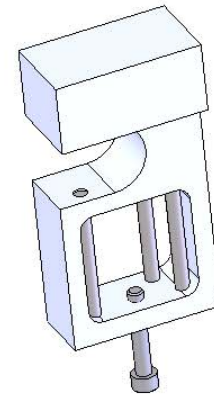
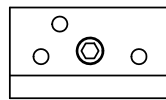
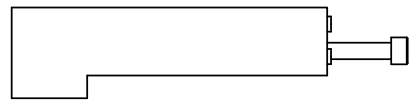
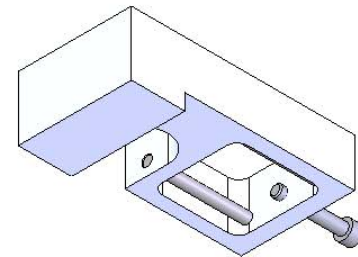
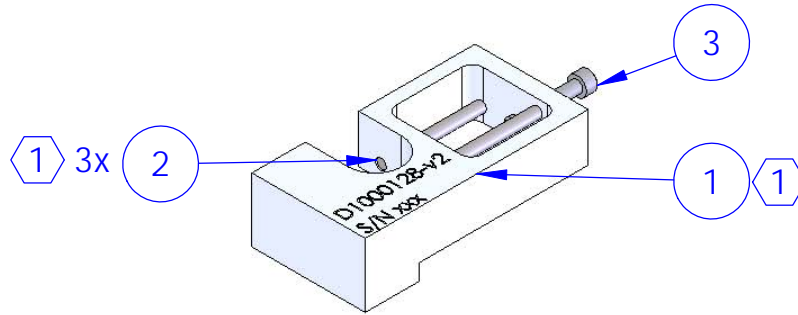
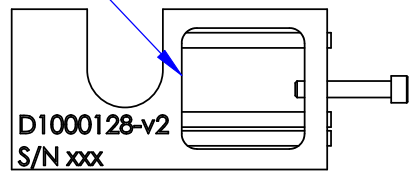


| REV. | DATE | DCN # | DRAWING TREE # |
|------|----------|-------|----------------|
| v1 | 25/06/10 | | |
| | | | |
| | | | |

Prism reference surface



| ITEM NO. | QTY | DESCRIPTION | DWG PART NO. | MATERIAL |
|----------|-----|---|--------------|-----------------|
| 3 | 1 | SCREW, SOCKET HEAD CAP, #2-56 UNC-2A X 0.5 LONG | | 300 SSSL |
| 2 | 3 | DOWEL PIN, Ø2 mm X 24 mm LONG (MCMaster CARR) | | stainless steel |
| 1 | 1 | ETM/ITM Penultimate Mass prism holder | D1000128-v2 | natural peek |

NOTES AND TOLERANCES: (UNLESS OTHERWISE SPECIFIED)

DIMENSIONS ARE IN mm

TOLERANCES:
X ± 0.1
XX ± 0.01

ANGULAR ± 0.2°

1 PRESS FIT DOWEL PINS INTO HOLES AS SHOWN AFTER ALL PARTS ARE CLEANED AND BAKED

MATERIAL

N/A

FINISH N/A µm

LIGO CALIFORNIA INSTITUTE OF TECHNOLOGY
MASSACHUSETTS INSTITUTE OF TECHNOLOGY

SYSTEM

aLIGO

SUB-SYSTEM
SUS

NEXT ASSY

ETM/ITM ear bonding jig

PART NAME

aLIGO ETM/ITM PM prism holder

DESIGNER

M van Veggel 23/06/10

DRAFTER

M van Veggel 23/06/10

CHECKER

R Jones 23/06/2010

APPROVAL

R JONES 02/08/2010

SIZE

DWG. NO.

A

D1001623

SCALE: 2:1

PROJECTION:



SHEET 1 OF 1

REV.

v2