

NOTES CONTINUED:
 5. BAG AND TAG PARTS INDIVIDUALLY WITH THEIR DRAWING NUMBER, REVISION, VARIANT OR "TYPE" (IF APPLICABLE), AND QUANTITY.
 EXAMPLE (TAG): DXXXXXX-VY, TYPE-XX, QTY: 1
 6. APPROXIMATE WEIGHT = 1.371 LBS.
 ⑦ THIS ITEM ONLY MAY USE D1001987-v2 (PREVIOUS REVISION)

REV.	DATE	DCN #	BOM #
v1	08/12/2010	E1000318	E1000616-v1
v2	16 NOV 2010	E1000689	E1000616-v2
v3	17 AUG 2011	E1100351	E1000616-v3

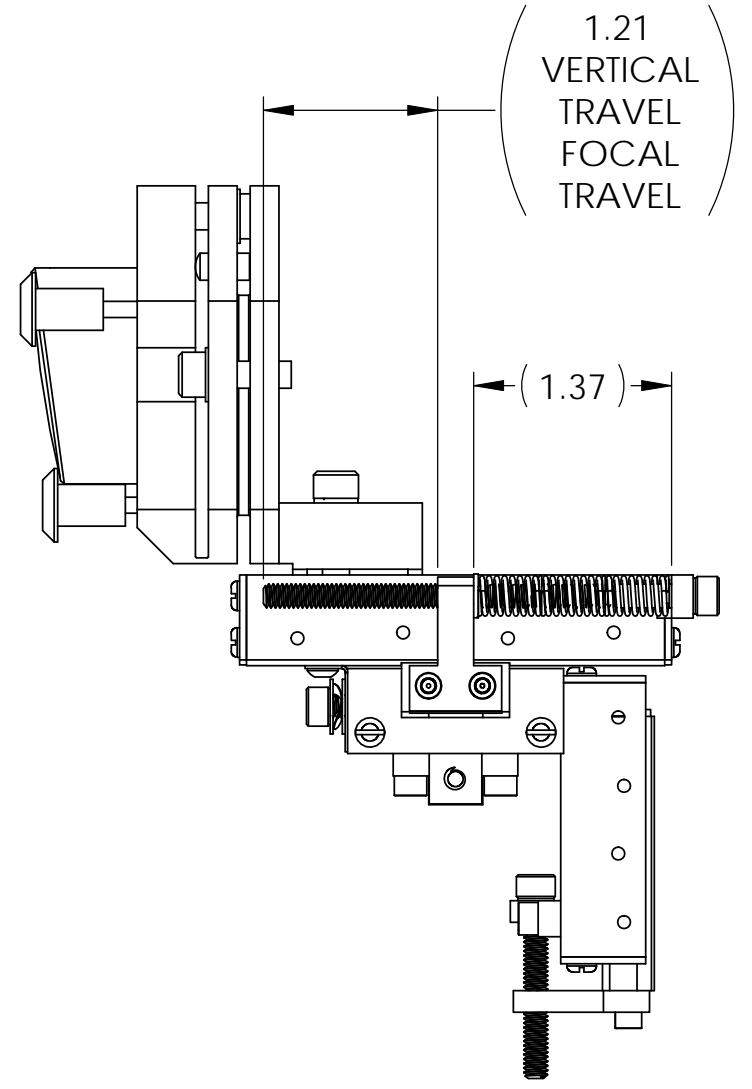
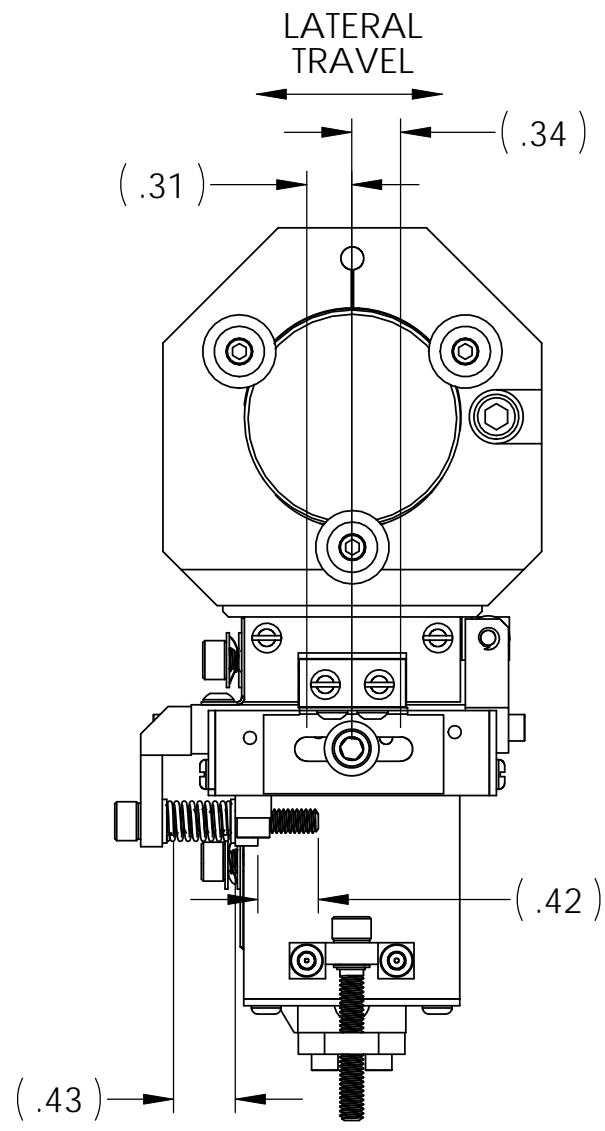
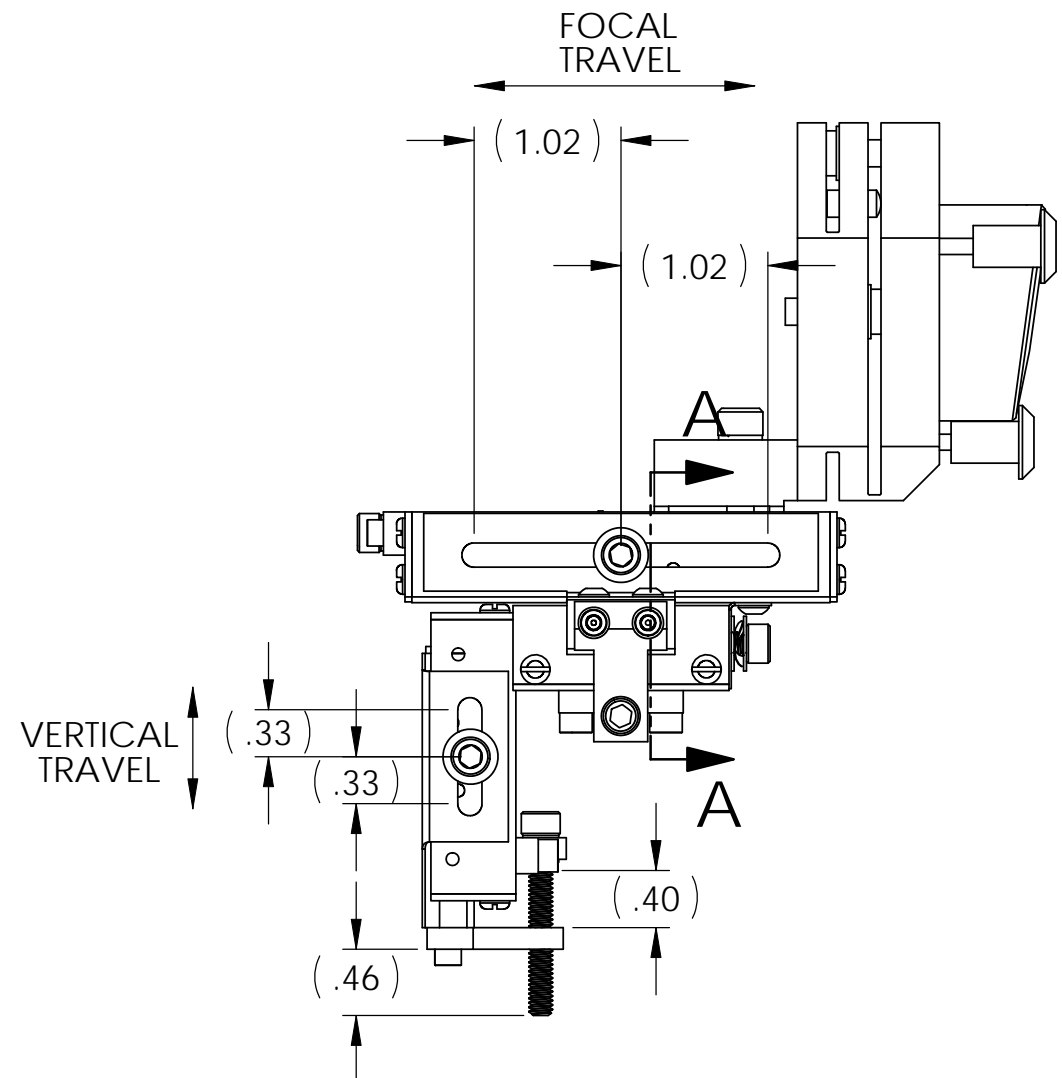
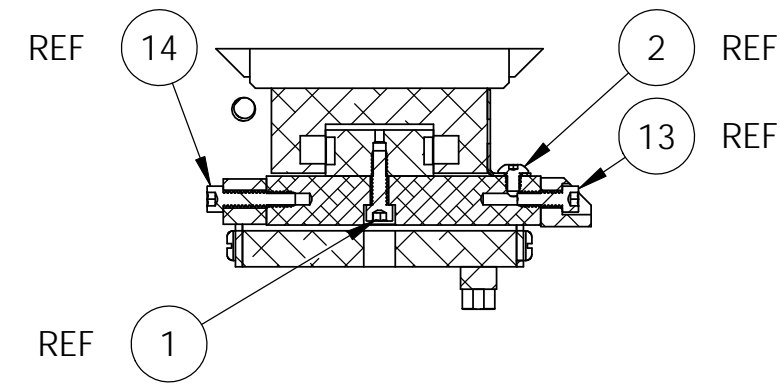
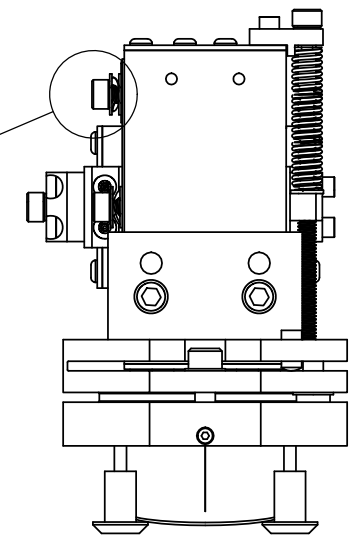
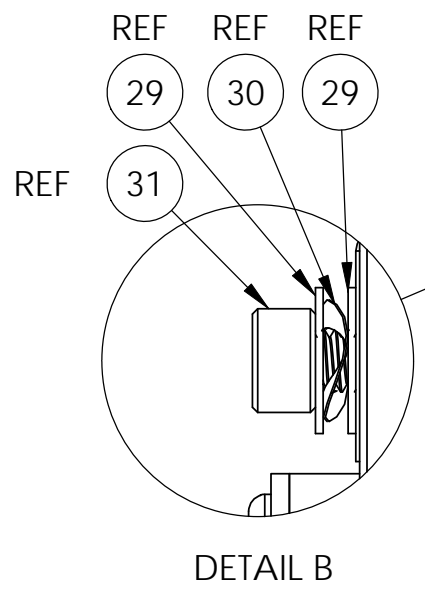
ITEM NO.	PART NUMBER	DESCRIPTION	MATERIAL	QTY	SPARE	TOTAL
31	92196A190	McMASTER, SOCKET HEAD CAP SCREW, #8-32 X .25 LG, SSTL	18-8 SSTL	3	1	4
30	9716K36	McMASTER, DISC SPRING, .174 ID X .322 OD X .0050 THIK, 1.50 Lb @ .034" DEFLECTION	300 SSTL	3	1	4
29	98017A625	McMASTER, #8 FLAT WASHER, .17 ID X .38 OD X .032 THK, NAS 1149-CN832R (OR EQUIV)	300 SSTL	6	2	8
28	D1001973	aLIGO TMS FOCUS SCREW	18-8 SSTL	1	0	1
27	94125K577	McMASTER, COMPRESSION SPRING, 7.1 MM O.D X 0.8 MM WIRE DIA X 15.5 MM LG, 2.52 N/MM (OR EQUIV)	302 SSTL	4	2	6
26	98408A117	McMASTER, E-STYLE EXTERNAL RETAINING RING, .141 SHAFT X .203 OD X .015 THK	15-7 MO SSTL	1	1	2
25	D1001987	aLIGO TMS VERT. - HORZ. SCREW	18-8 SSTL	2	0	2
24	99040A416	MCMMASTER, SHIMMING WASHER, .188 ID X .250 OD X .016 THK, SSTL	18-8 SSTL	4	2	6
23	D1001833	aLIGO TMS HOR. SLIDE SEC.	6061-T6 Al	1	0	1
22	D1001951	aLIGO TMS DEL-TRON RS1-2 FOCUS SLIDE ASSY.	N/A	1	0	1
21	D1001892	aLIGO TMS DEL-TRON-RS1 HORIZ. SLIDE ASSY	N/A	1	0	1
20	D1001894	aLIGO TMS DEL-TRON-RS1-1,-VERTICAL ASSY.	RS1-1	1	0	1
19	92200A106	McMASTER, SOCKET HEAD CAP SCREW, #4-40 X .25 LG, SSTL, MS 16995-9 (OR EQUIV)	300 SSTL	2	1	3
18	MS 16995-38	SOCKET HEAD CAP SCREW, #10-24 X .75 LG, SSTL (OR EQUIV)	300 SSTL	2	1	3
17	WFV-08	U-C COMP, #8 FLAT WASHER, VENTED, .169 ID X .304 OD X .032 THK, SSTL	18-8 SSTL	5	1	6
16	D1002210	aLIGO TMS FLEXABLE SEC MIRROR MT. ASSY	N/A	1	0	1
15	92949A106	McMASTER, SOCKET DRIVE BUTTON HEAD SCREW, #4-40 X .25 LG, SSTL	18-8 SSTL	2	1	3
14	93235A110	McMASTER, SOCKET HEAD CAP SCREW, VENTED, #4-40 X .50 LG (OR EQUIV)	18-8 SSTL	2		2
13	93235A107	McMASTER, SOCKET HEAD CAP SCREW, VENTED, #4-40 X .313 LG, SSTL (OR EQUIV)	18-8 SSTL	2	1	3
12	D1001832	aLIGO TMS VERT. SLIDE SEC. BRK.	6061-T6 Al	1	0	1
11	D1001836	aLIGO TMS VERTICAL HOLDER MT.	6061-T6 Al	1	0	1
10	D1001834	aLIGO TMS HOLDER SEC. FOCUS	6061-T6 Al	1	0	1
9	D1001841	aLIGO TMS FOCUS SLIDE LOCK	304 SSTL	1	0	1
8	D1001813	aLIGO TMS THREAD MT. SEC. FOCUS	6061-T6 Al	1	0	1
7	D1001839	aLIGO TMS HOR. LOCK	304 SSTL	1	0	1
6	92200A146	McMASTER, SOCKET HEAD CAP SCREW, #6-32 X .38 LG, SSTL, MS 16995-17 (OR EQUIV)	300 SSTL	4	2	6
5	D1001837	aLIGO TMS VERTICAL LOCK	304 SSTL	1	0	1
4	D1001835	aLIGO TMS HOR. THREAD MT.	6061-T6 Al	1	0	1
3	93235A108	McMASTER, SOCKET HEAD CAP SCREW, #4-40 X .38 LG, SSTL	18-8 SSTL	3	1	4
2	BU-402	U-C-COMP, SOCKET DRIVE BUTTON HEAD SCREW, #4-40 X .13 LG, SSTL	18-8 SSTL	2	1	3
1	92200A108	McMASTER, SOCKET HEAD CAP SCREW, #4-40 X .38 LG, SSTL, MS 16995-10 (OR EQUIV)	300 SSTL	2	1	3

PARTS LIST

DIMENSIONS ARE IN INCHES		NOTES AND TOLERANCES: (UNLESS OTHERWISE SPECIFIED)		LIGO CALIFORNIA INSTITUTE OF TECHNOLOGY MASSACHUSETTS INSTITUTE OF TECHNOLOGY		PART NAME	
TOLERANCES: .XX ± .02 .XXX ± .005		1. INTERPRET DRAWING PER ASME Y14.5-1994 2. REMOVE ALL SHARP EDGES, .005-.015, FOR MACHINED PARTS. ROUND ALL EDGES APPROXIMATELY R.02 FOR SHEET METAL PARTS. 3. DO NOT SCALE FROM DRAWINGS. 4. ALL MACHINING FLUIDS MUST BE FULLY SYNTHETIC, FULLY WATER SOLUBLE AND FREE OF SULFUR, SILICONE, AND CHLORINE.		SYSTEM ADVANCED LIGO		SUB-SYSTEM AOS	
ANGULAR ± 1.0°		MATERIAL N/A		FINISH N/A μinch		NEXT ASSY D1003120	
				DESIGNER K. MAILAND 07/21/2010		SIZE DWG. NO. B D1001600	
				DRAFTER M. MILLER 08/09/2010		REV. v3	
				CHECKER		SCALE: 1:4 PROJECTION:	
				APPROVAL		SHEET 1 OF 3	

D1001600_aLIGO_TMS_Tele_Sec_Mirror_Mt._Assem., PART PDM REV: X-368, DRAWING PDM REV: X-068

D1001600_aLIGO_TMS_Tele_Sec_Mirror_Mt_Assem, PART PDM REV: X-368, DRAWING PDM REV: X-068



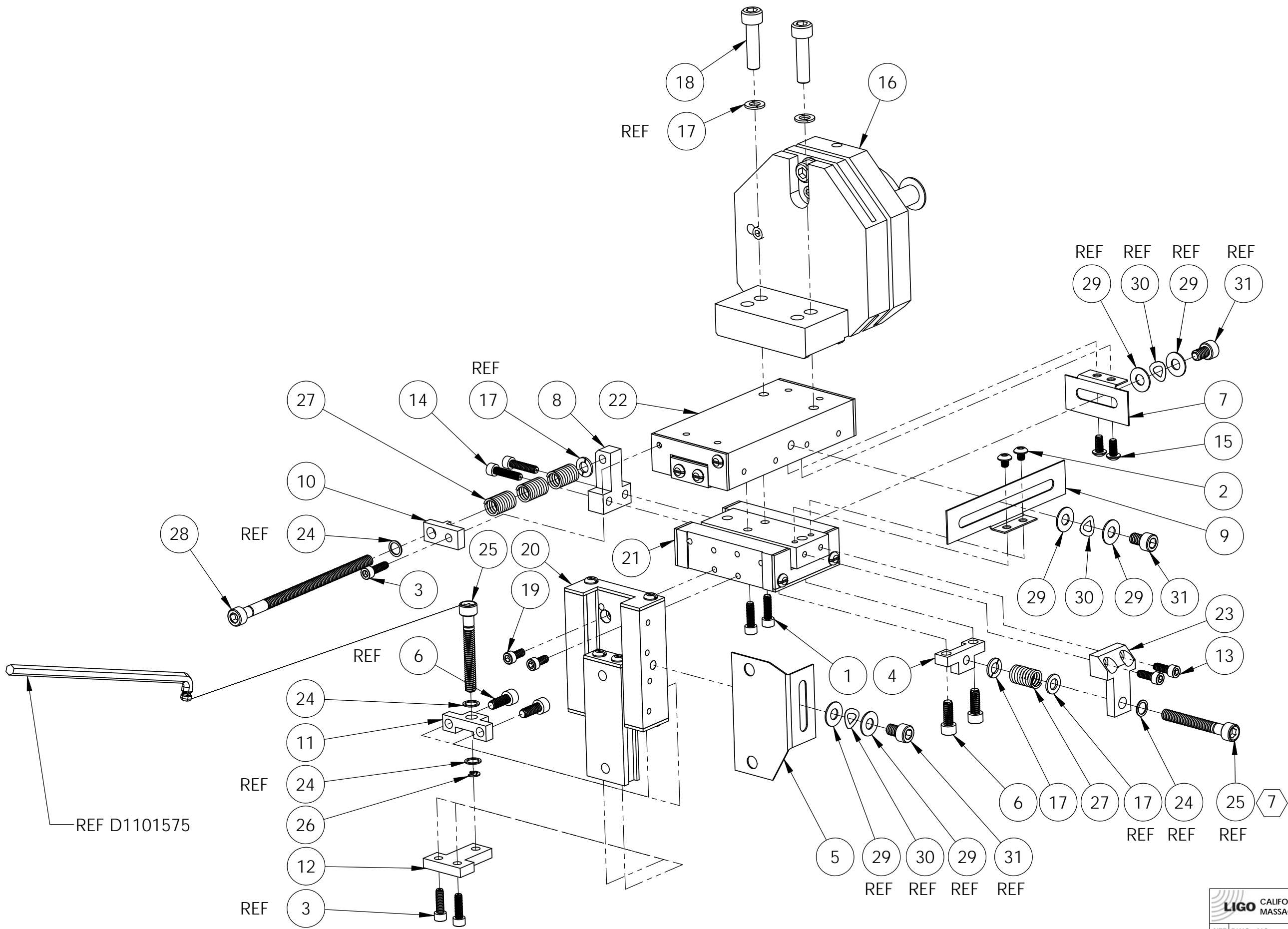
LIGO CALIFORNIA INSTITUTE OF TECHNOLOGY MASSACHUSETTS INSTITUTE OF TECHNOLOGY	
SIZE B	DWG. NO. D1001600
SCALE: 9:16	PROJECTION: SHEET 2 OF 3
REV. V3	

D1001600_aLIGO_TMS_Tele_Sec_Mirror_Mt._Assem, PART PDM REV: X-368, DRAWING PDM REV: X-068

8 7 6 5 4 3 2 1

D
C
B
A

D
C
B
A



CALIFORNIA INSTITUTE OF TECHNOLOGY MASSACHUSETTS INSTITUTE OF TECHNOLOGY		
SIZE	DWG. NO.	REV.
B	D1001600	V3
SCALE: 1:2	PROJECTION:	SHEET 3 OF 3

8 7 6 5 4 3 2 1