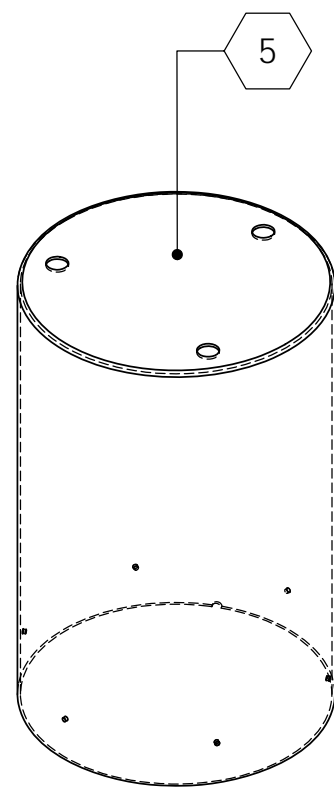
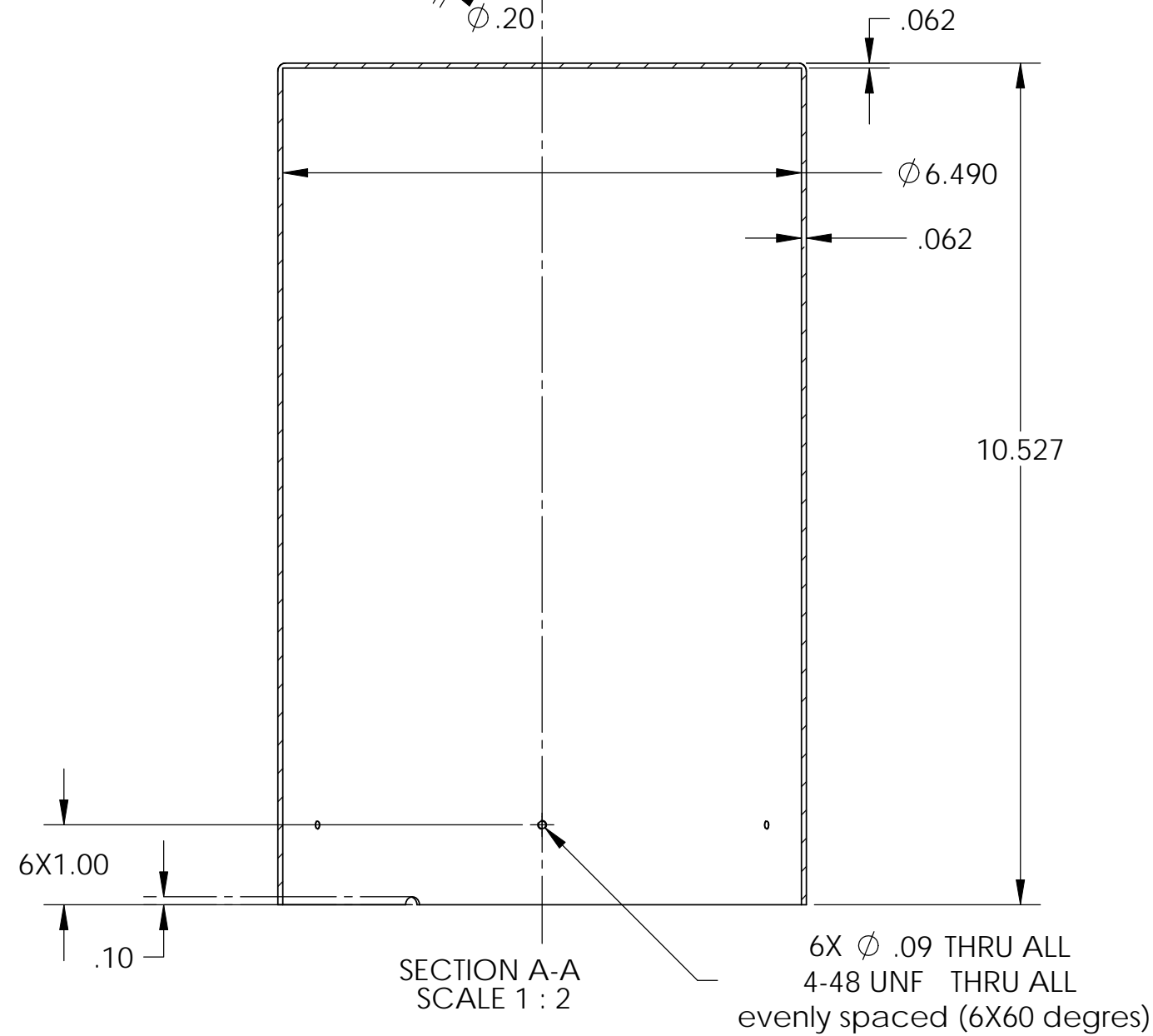
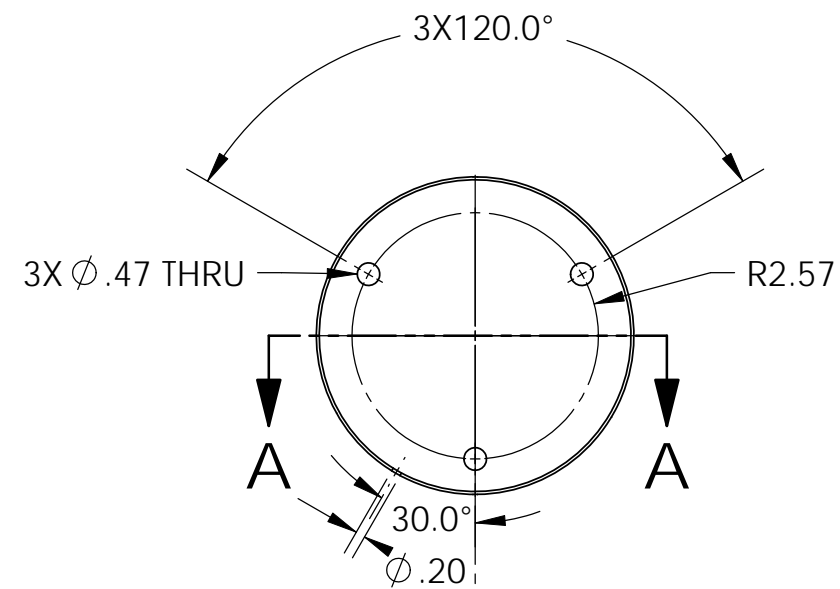


D1001527 GS13 Cover - Mu Metal, PART PDM REV: X-020, DRAWING PDM REV: X-022

NOTES CONTINUED:
 5. SCRIBE, ENGRAVE, OR MECHANICALLY STAMP (NO INKS OR DYES) DRAWING PART NUMBER, REVISION (AND VARIANT OR "TYPE" IF APPLICABLE) ON NOTED SURFACE OF PART FOLLOWED ON THE NEXT LINE WITH A THREE DIGIT SERIAL NUMBER. SERIAL NUMBERS START AT 001 FOR THE FIRST ARTICLE AND PROCEED CONSECUTIVELY. USE MINIMUM 0.12" HIGH CHARACTERS, UNLESS THE SIZE OF THE PART DICTATES SMALLER CHARACTERS. A VIBRATORY TOOL MAY BE USED.
 EXAMPLE: DXXXXXX-VY, TYPE-XX, S/N XXX
 6. APPROXIMATE WEIGHT = 4.87 LB

REV.	DATE	DCN #	DRAWING TREE #
V1	14 JUNE 2010	E1000229	-
V2	22 NOV 2010	E1000824	-
-	-	-	-



NOTES AND TOLERANCES: (UNLESS OTHERWISE SPECIFIED)				LIGO CALIFORNIA INSTITUTE OF TECHNOLOGY MASSACHUSETTS INSTITUTE OF TECHNOLOGY		PART NAME	
DIMENSIONS ARE IN INCHES TOLERANCES: .XX ± .015 .XXX ± .005 ANGULAR ± 0.1°				1. INTERPRET DRAWING PER ASME Y14.5-1994. 2. REMOVE ALL SHARP EDGES, R.02 MIN. 3. DO NOT SCALE FROM DRAWING. 4. ALL MACHINING FLUIDS MUST BE FULLY SYNTHETIC, FULLY WATER SOLUBLE AND FREE OF SULFUR, SILICONE, AND CHLORINE.		GS13 Cover - Mu Metal	
MATERIAL CO-NETIC AA		FINISH 32 μinch		SYSTEM ADVANCED LIGO		SUB-SYSTEM SEI	
NEXT ASSY D1001525				DESIGNER S.BISCANS	14 JUNE 2010	SIZE B	DWG. NO. D1001527
				DRAFTER S.BISCANS	14 JUNE 2010	REV. v2	
				CHECKER F.MATICHARD	22 JUNE 2010	SCALE: 1:4	PROJECTION:
				APPROVAL K.MASON	22 JUNE 2010	SHEET 1 OF 1	