

NOTES CONTINUED:

5 INTERFACE PLANE IS COINCIDENT WITH D060462, INNER PLATE LOWER QUAD STRUCTURE.

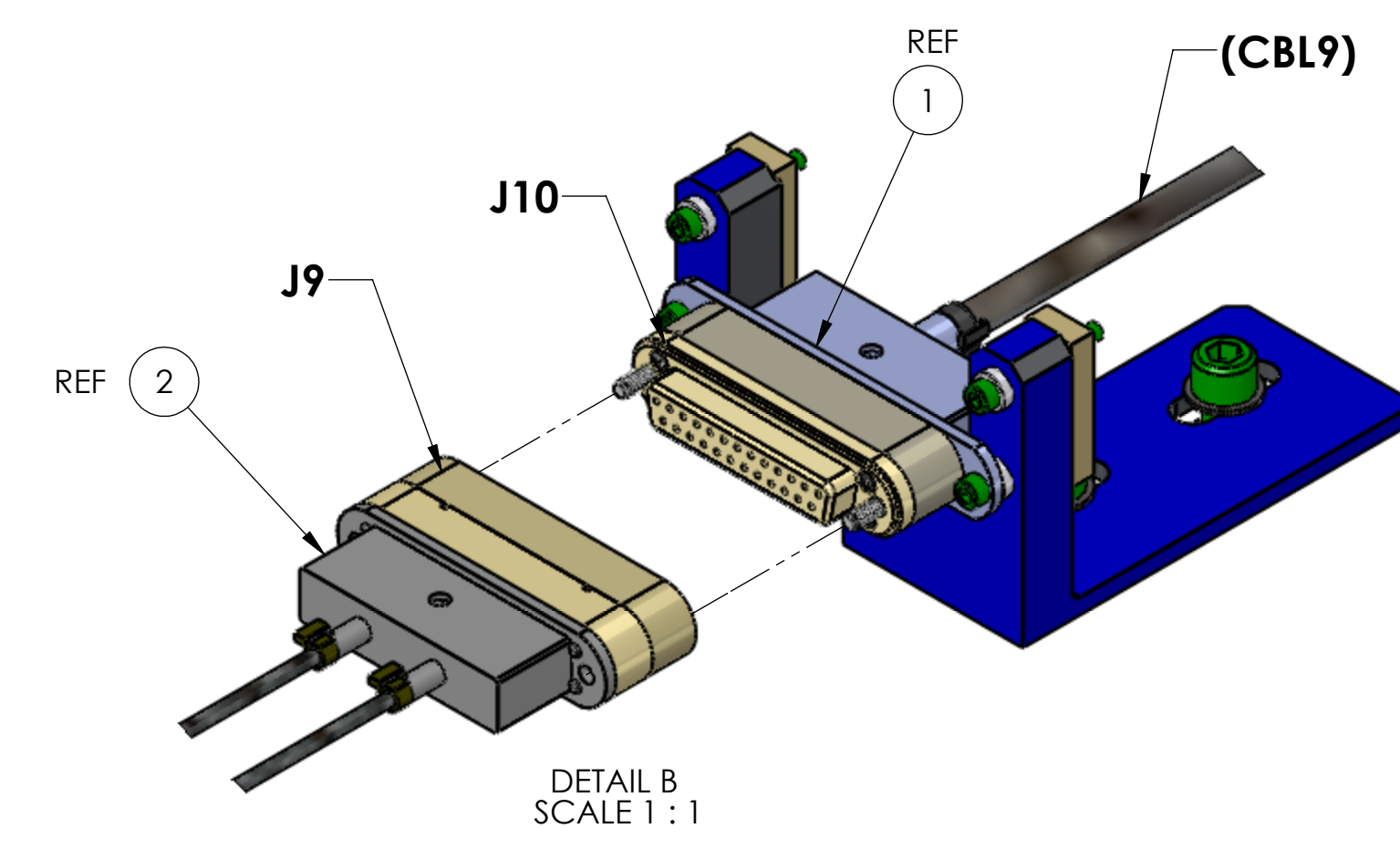
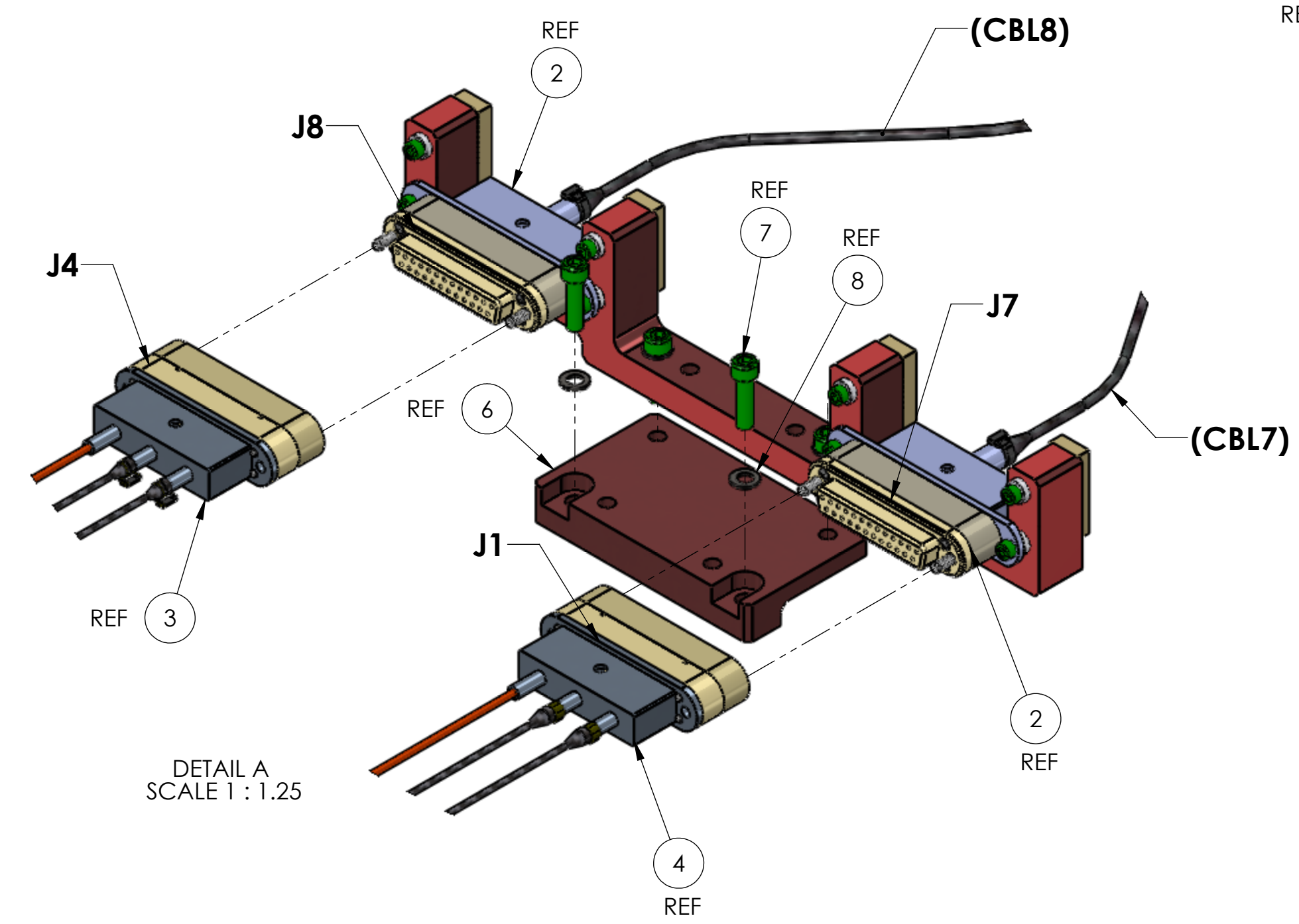
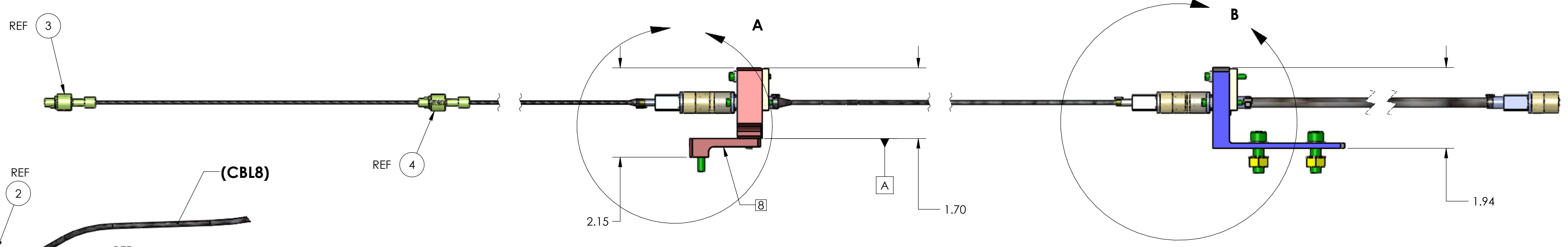
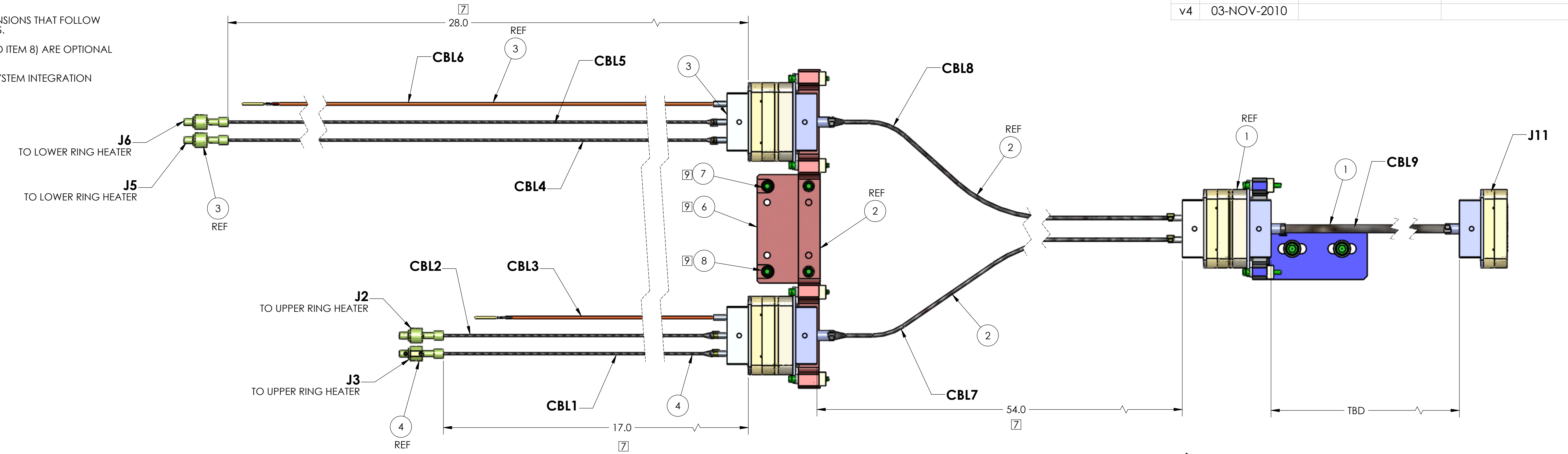
6 INTERFACE PLANE IS COINCIDENT WITH BOX FRAME OF UPPER QUAD STRUCTURE.

7 APPROXIMATE CABLE LENGTH DIMENSIONS THAT FOLLOW CURVED PATHS BETWEEN JUNCTIONS.

8 ITEM 6, AND HARDWARE (ITEM 7 AND ITEM 8) ARE OPTIONAL MOUNTING IF REQUIRED.

9 OPTIONAL COMPONENTS FOR SUBSYSTEM INTEGRATION

REV.	DATE	DCN #	DRAWING TREE #
v1	27-AUG-2010	-	-
v2	29-SEPT-2010	-	-
v3	07-OCT-2010	-	-
v4	03-NOV-2010	-	-



ITEM NO.	PART NUMBER	DESCRIPTION	QTY.	SPARE	TOTAL
8	WF-25-A	WASHER, FLAT, #8, .169 ID X .304 OD .032 THK	2		2
7	C810-N	SSHC, #8-32 UNC-2A X 5/8 LONG. UC-COMPONENTS	2		2
6	D1002420	ALIGO TCS RH CUSTOM BRACKET ADAPTER	1		1
5	A31189	1/8IN STAINLESS STEELCABLE TIE. WTG GROUP	10		10
4	D1001518	CABLE ASSY, UPPER HEATER	1		1
3	D1001519	CABLE ASSY, LOWER HEATER	1		1
2	D1001520	CABLE ASSY, L-QUAD TERM BLK TO U-QUAD TERM BLK	1		1
1	D1001521	CABLE ASSY, TERMINAL BLK TO UPPER QUAD	1		0

NOTES AND TOLERANCES: (UNLESS OTHERWISE SPECIFIED)

- INTERPRET DRAWING PER ASME Y14.5-1994.
- REMOVE ALL SHARP EDGES, R.02 MIN.
- DO NOT SCALE FROM DRAWING.
- ALL MACHINING FLUIDS MUST BE FULLY SYNTHETIC, FULLY WATER SOLUBLE AND FREE OF SULFUR, SILICONE, AND CHLORINE.

DIMENSIONS ARE IN INCHES

TOLERANCES:  
 .XX ± .05  
 .XXX ± .010

ANGULAR ± 0.1°

MATERIAL: N/A  
 FINISH: N/A μinch

CALIFORNIA INSTITUTE OF TECHNOLOGY  
 MASSACHUSETTS INSTITUTE OF TECHNOLOGY

SYSTEM: ADVANCED LIGO      SUB-SYSTEM: AOS      NEXT ASSY: D1002027

**PART NAME: TCS Ring Heater In-Vac Cable Assembly**

DESIGNER: A.COLE	26-AUG-2010	SIZE: D	DWG. NO. D1001517	REV. v4
DRAFTER: A.COLE	27-AUG-2010			
CHECKER: S.O'CONNOR	27-AUG-2010			
APPROVAL: M.JACOBSON	27-AUG-2010	SCALE: 1:24	PROJECTION:	SHEET 1 OF 1

D1001517\_TCS Ring Heater In-Vac Cable Assembly - PART PDM REV: X014 DRAWING PDM REV: X014