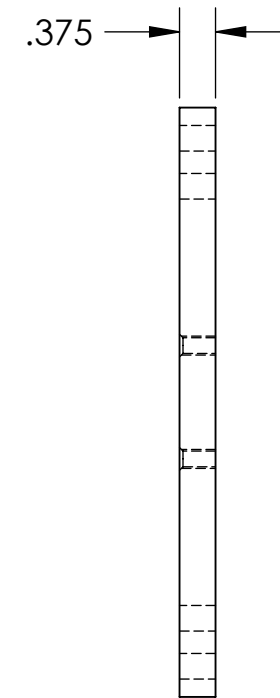
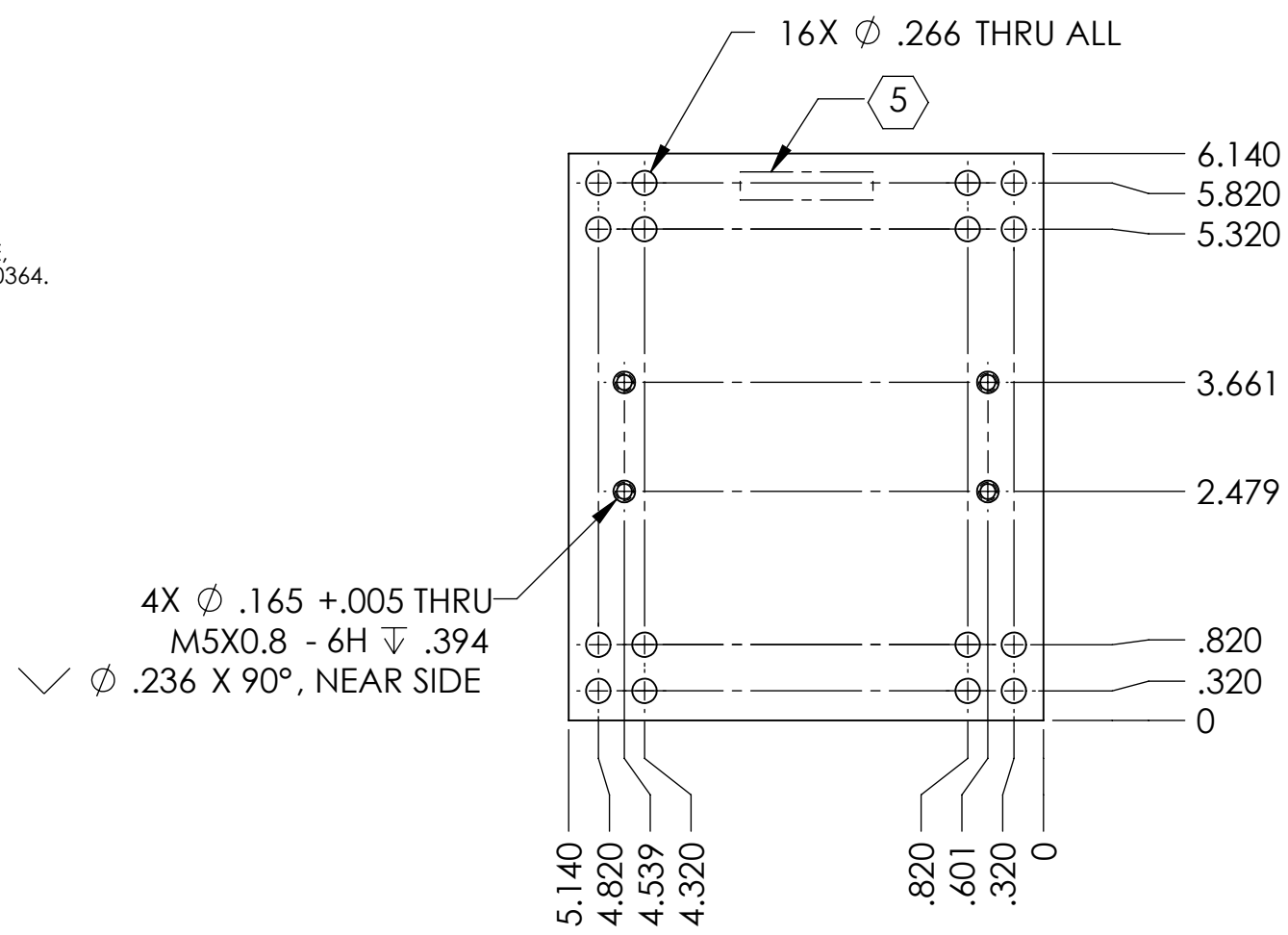
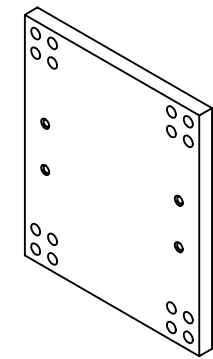


NOTES: UNLESS OTHERWISE SPECIFIED

1. INTERPRET DRAWING PER ASME Y14.5-1994.
2. REMOVE ALL SHARP EDGES 0.005" to 0.015".
3. DO NOT SCALE FROM DRAWING.
4. ALL MACHINING FLUIDS MUST BE FULLY SYNTHETIC, FULLY WATER SOLUBLE AND FREE OF SULFUR, SILICONE, AND CHLORINE. REFER TO LIGO E0900237 FOR LIST OF APPROVED COOLANTS.
5. SCRIBE, ENGRAVE (A VIBRATORY TOOL MAY BE USED), LASER MARK OR MECHANICALLY STAMP (NO INKS OR DYES) DRAWING PART NUMBER, REVISION (AND VARIANT OR "TYPE" IF APPLICABLE) ON NOTED SURFACE OF PART FOLLOWED ON THE NEXT LINE WITH A THREE DIGIT SERIAL NUMBER. SERIAL NUMBERS START AT 001 FOR THE FIRST ARTICLE AND PROCEED CONSECUTIVELY. USE MINIMUM 0.12" HIGH CHARACTERS, UNLESS THE SIZE OF THE PART DICTATES SMALLER CHARACTERS, EXAMPLE: DXXXXXX-VY, TYPE-XX, S/N XXX
6. APPROXIMATE WEIGHT = 1.12 LB.
7. MACHINE ALL SURFACES TO REMOVE OXIDES AND MILL FINISH, USE OF ABRASIVE REMOVAL TECHNIQUES IS NOT ALLOWED. REFER TO LIGO-E0900364.
8. ALL PARTS SHALL BE MANUFACTURED IN ACCORDANCE WITH LIGO SPECIFICATION E0900364
9. ALL MATERIAL IS TO BE VIRGIN MATERIAL (i.e. NO WELD REPAIRS, PLUGS OR RECYCLED MATERIAL). NO REPAIRS SHALL BE MADE UNLESS APPROVED IN ADVANCE, AND IN WRITING, BY LIGO LABORATORY. REFER TO LIGO-E0900364.
10. ANODIZE PER MIL-A-8625F, TYPE II, CLASS 2 BLUE.

REV.	DATE	DCN #	DRAWING TREE #
v1	03 FEB 2011	E1000182	-
-	-	-	-
-	-	-	-



D1001510 aLIGO AOS Oplev RX Stage Adapter, PART PDM REV: X-011, DRAWING PDM REV: X-009

NOTES AND TOLERANCES: (UNLESS OTHERWISE SPECIFIED)				LIGO CALIFORNIA INSTITUTE OF TECHNOLOGY MASSACHUSETTS INSTITUTE OF TECHNOLOGY		PART NAME	
DIMENSIONS ARE IN INCHES				SYSTEM		ALIGO AOS OPLEV	
TOLERANCES: .XX ± .03 .XXX ± .005				SUB-SYSTEM		RX STAGE ADAPTER	
ANGULAR ± 0.5°				NEXT ASSY		DESIGNER N. KILPATRICK 15 JUNE 2010	
MATERIAL 6061-T6 Al				FINISH N/A μinch		DRAFTER J. TERRAZAS 02/01/2011	
				D1001330		SIZE DWG. NO. B D1001510	
						CHECKER	
						APPROVAL	
						SCALE: 1:2 PROJECTION: SHEET 1 OF 1	