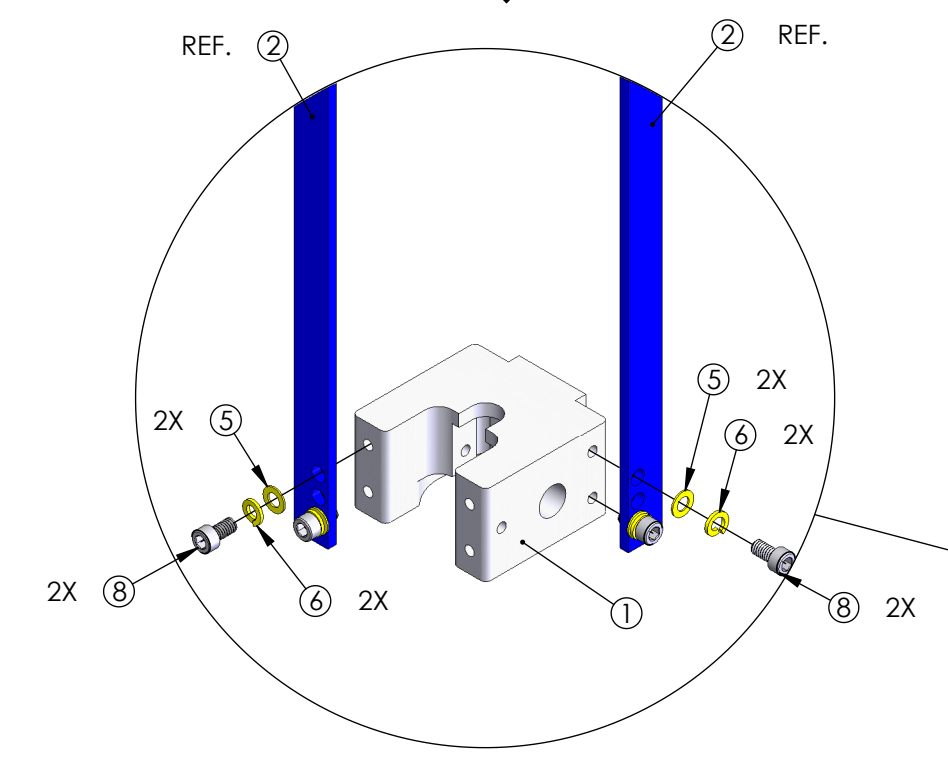
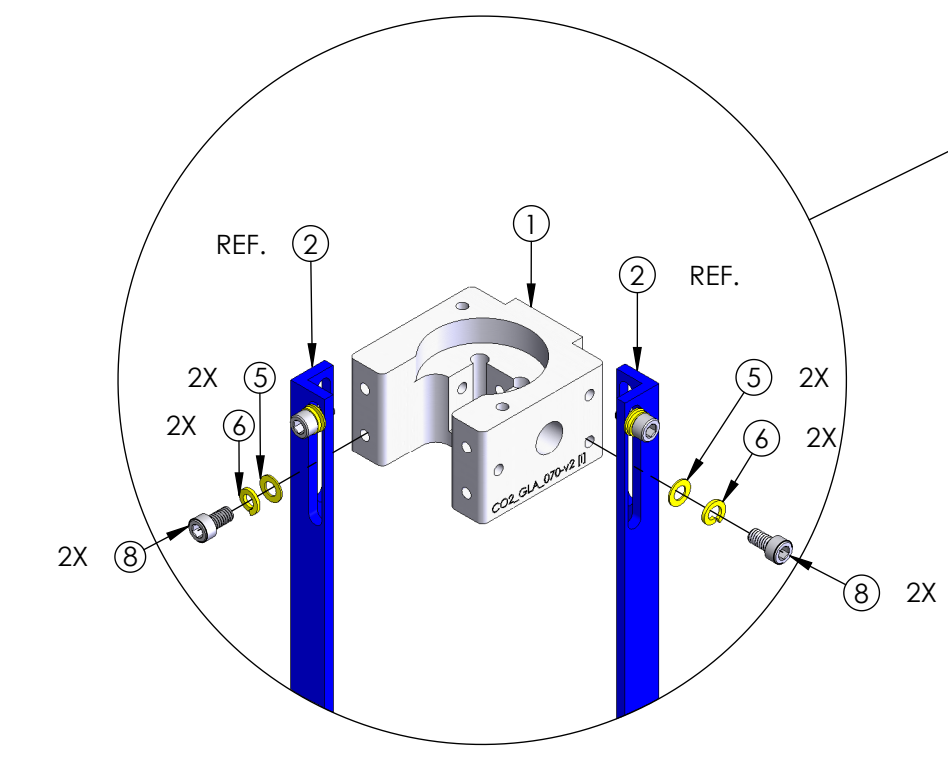
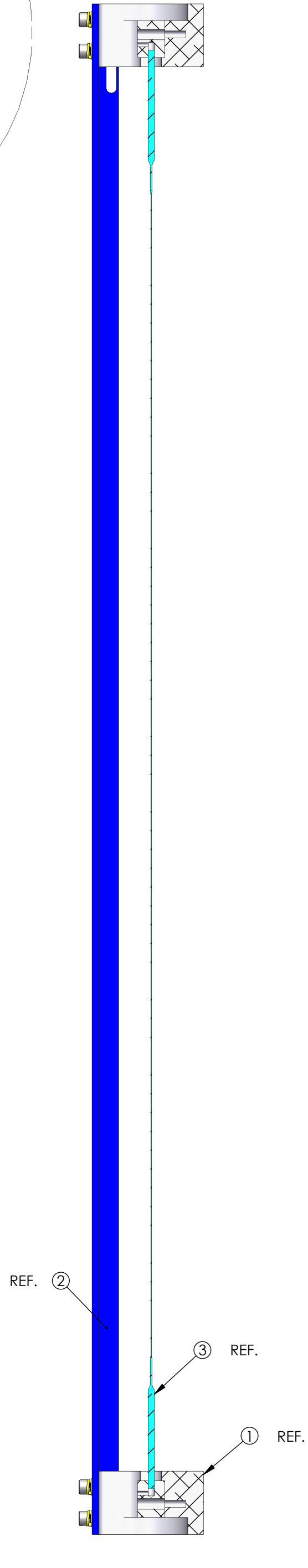
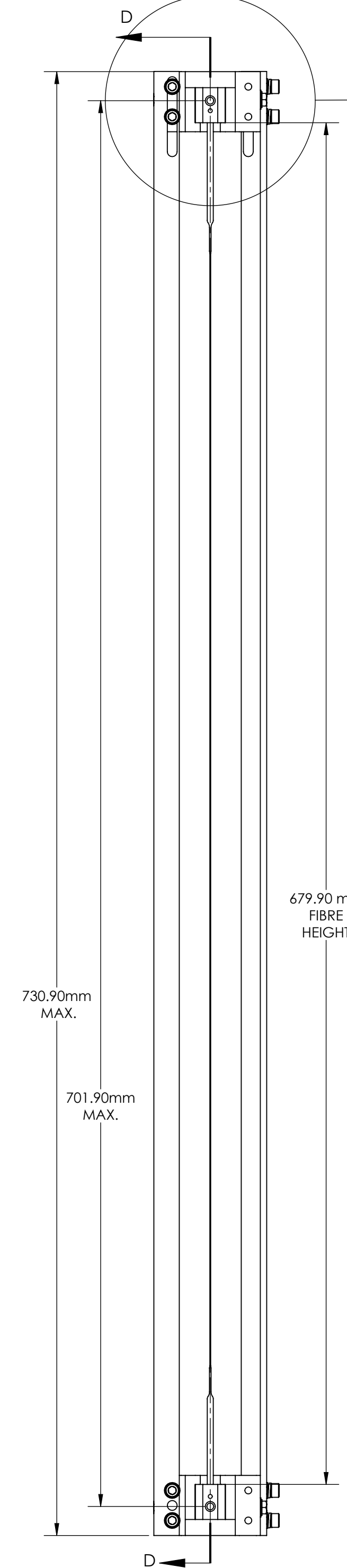
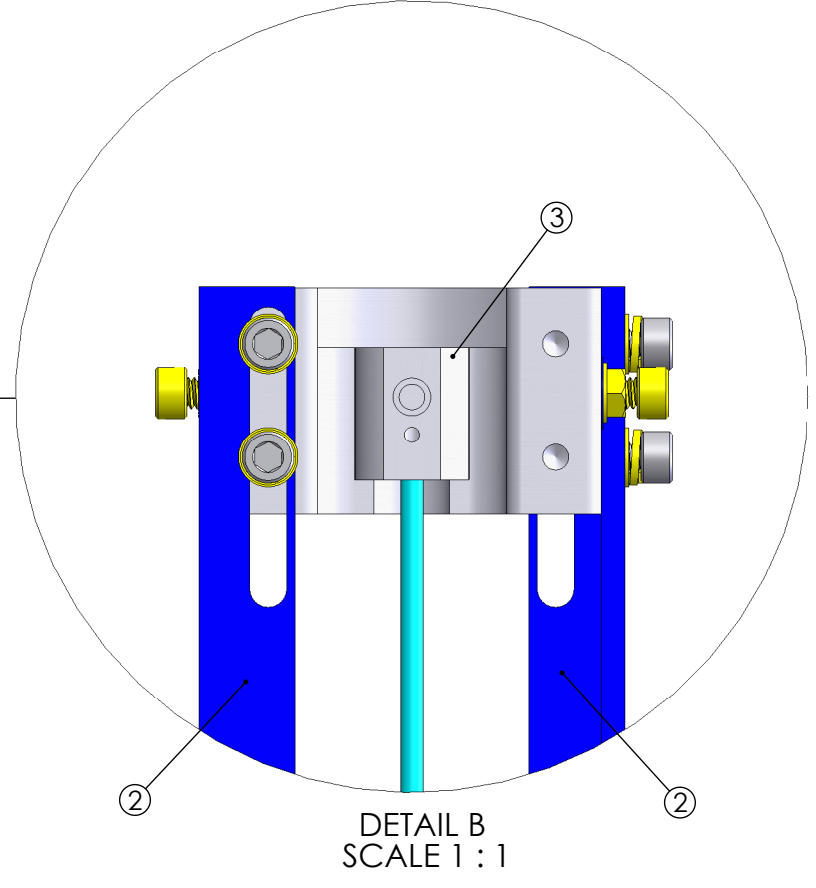
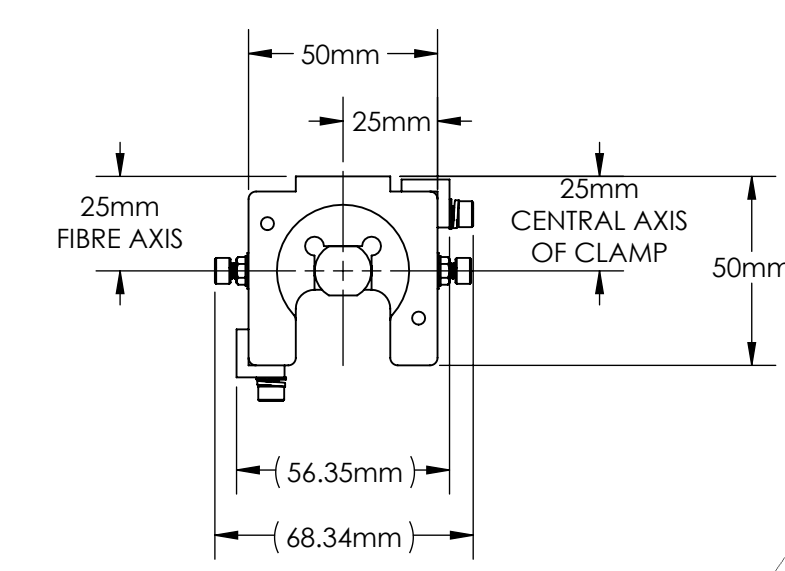
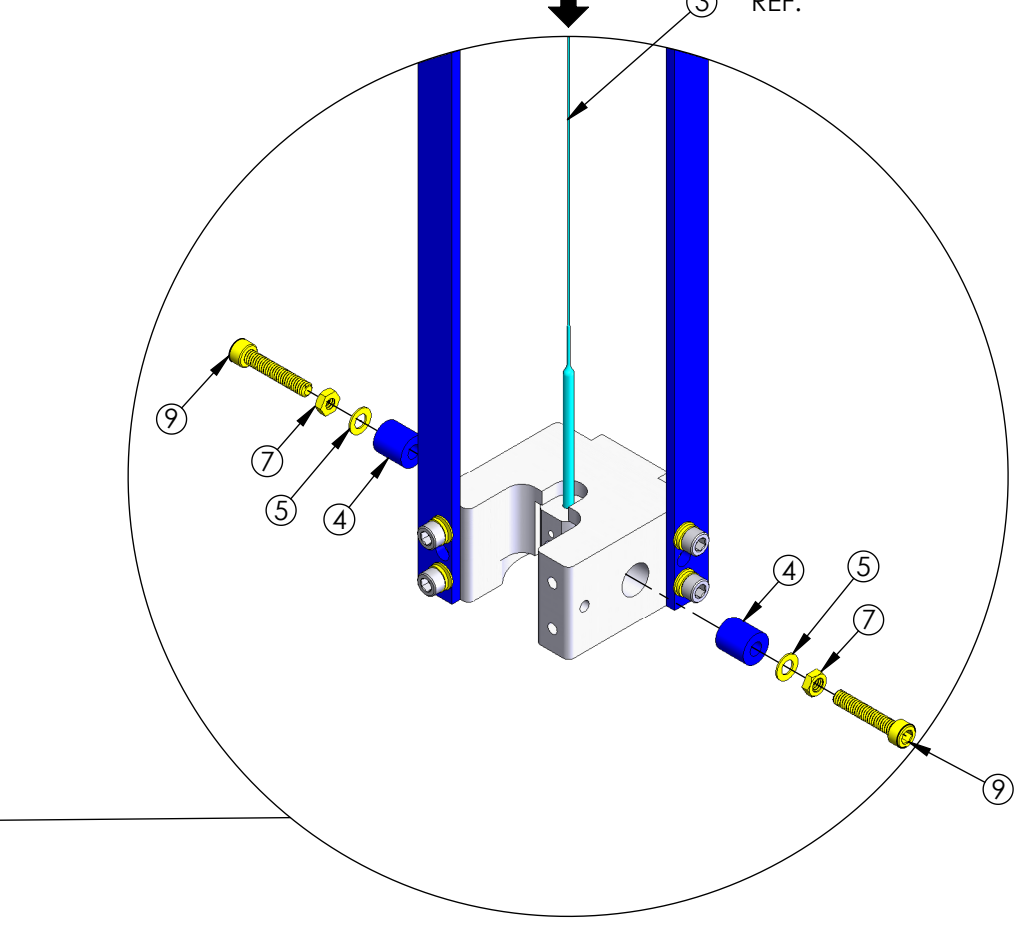
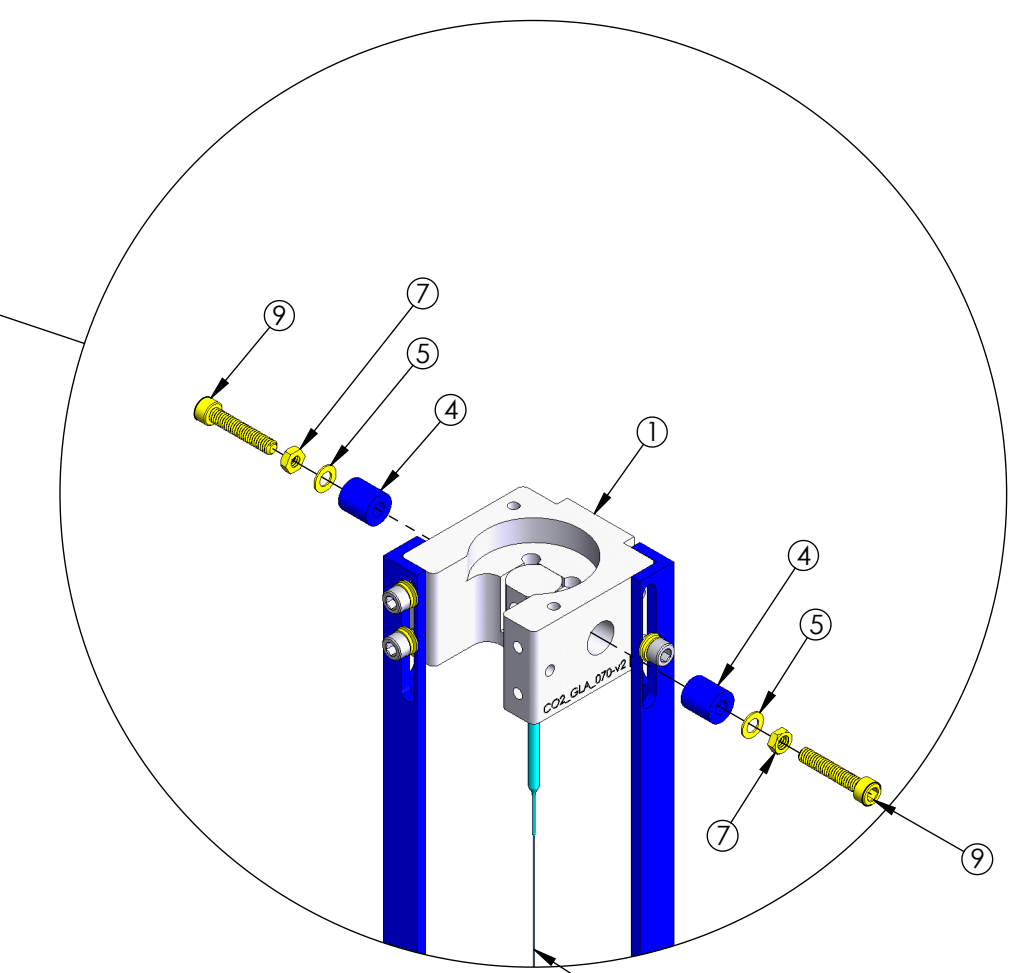
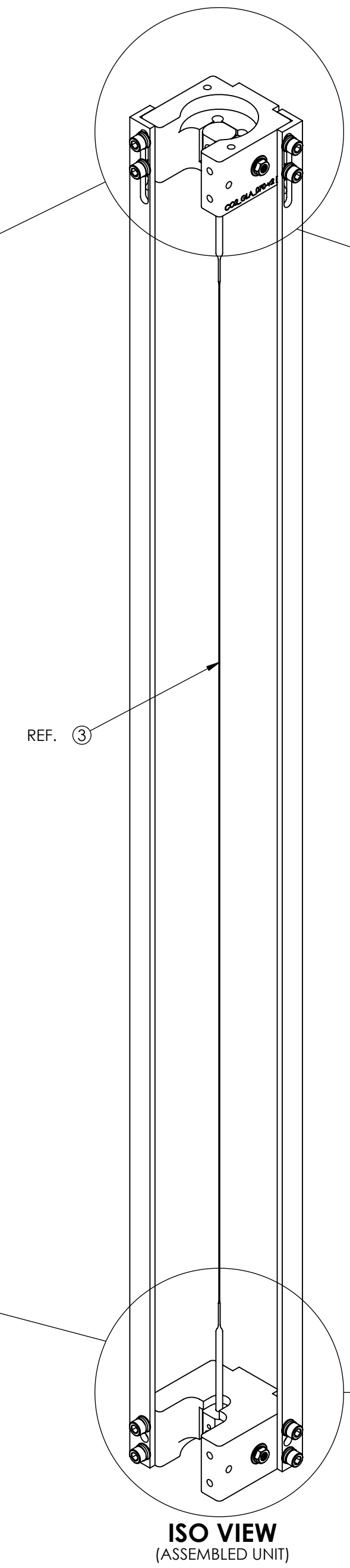


REV.	DATE	DCN #	DRAWING TREE #
v1	24 JUN 2010	-	-
v3	01 AUG 2013	E1300622-x0	-
v4	01 AUG 2013	E1300625-x0	-



NOTE: ADD FLAT WASHERS AND LOCK WASHERS TO ATTACH THE STIFFENING RAILS TO THE PULLING CLAMPS TO MAINTAIN PROPER TENSION OF THE FIBRE



NOTE: USE SCREWS, WASHERS, SPACERS, AND LOCK NUTS ON BOTH SIDES OF THE CLAMP BLOCKS TO RETAIN THE "FUSE" ENDS INTO THE CLAMP BLOCKS TOP AND BOTTOM.

ITEM NO.	PART NUMBER	DESCRIPTION	MATERIAL	QTY.
9	92196A198 McMaster-Carr OR EQ.	SCREW, SHC, 8-32 X .88 LG.	18-8 SSSL	4
8	92196A191 McMaster-Carr OR EQ.	SCREW, SHC, 8-32 X .31 LG.	18-8 SSSL	8
7	90730A009 McMaster-Carr OR EQ.	HEX NUT, 8-32 (UNDERSIZED)	18-8 SSSL	4
6	MS35338-137 OR EQ.	WASHER, SPLIT-LOCK, NO. 8	300 SSSL	8
5	NASC620-C8 OR EQ.	WASHER, FLAT, NO. 8	300 SSSL	12
4	92510A155 McMaster-Carr OR EQ.	SPACER, .38 O.D X 13/32 LG. (UNTHREADED)	6061-T6 Al	4
3	D1101052	αLIGO, PULLED FIBRE WITH FUSE ENDS ASSEMBLY	N/A	1
2	D1001609	αLIGO, CO2 LASER PULLING MACHINE, FIBRE CARTRIDGE CLAMP LINKAGE L-BRACKET	6061-T6 Al	2
1	D1000575	αLIGO, CO2 LASER PULLING MACHINE, FIBRE CARTRIDGE MASTER PULLING CLAMP	6061 Alloy	2

1 ALT D1101116 MASTER PULLING CLAMP 6082-T6 AL 2
THIS ALTERNATE TO ITEM 1 IS USED FOR FIBER STORAGE & TRANSPORT. ITEM 1 IS USED DURING FIBER FABRICATION

NOTES AND TOLERANCES: (UNLESS OTHERWISE SPECIFIED)

LIGO CALIFORNIA INSTITUTE OF TECHNOLOGY MASSACHUSETTS INSTITUTE OF TECHNOLOGY

SYSTEM: ADVANCED LIGO SUB-SYSTEM: SUS PART NAME: αLIGO, CO2 LASER PULLING MACHINE FIBRE CARTIDGE

MATERIAL: N/A FINISH: N/A μinch NEXT ASSY: D070519, D1300660

DESIGNER: R.JONES DRAFTER: A.CUMMING CHECKER: SEE DCC APPROVAL: SEE DCC

SIZE: D DWG. NO.: D1001504 REV.: v4

SCALE: 1:2 PROJECTION: SHEET 1 OF 1

NOTE: DRAWING UPDATED TO CURRENT CAD FORMAT BY E. SANCHEZ 08/05/2013

REDLINE