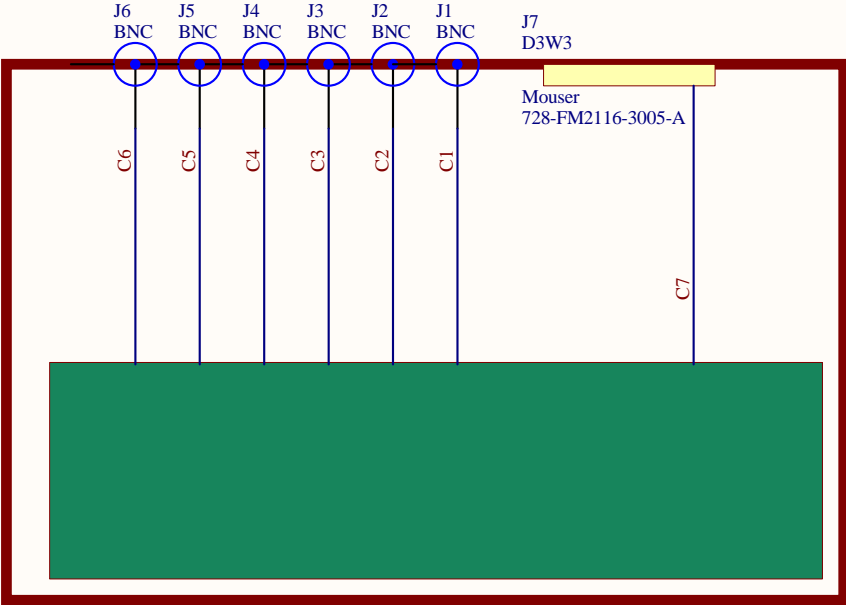


- E1 Jack screw kit
- E2 Jack screw kit
- L-Com SDG450XS
- E3 Hex standoff
- E4 Hex standoff
- E5 Contacts
- E6 Contacts
- E7 Contacts
- Mouser 649-8638PPS1005LF

- L-Com SDHS
- J1 BNC
- J2 BNC
- J3 BNC
- J4 BNC
- J5 BNC
- J6 BNC
- J7 D3W3
- Mouser 728-FM2116-3005-A



- E8 #4-40 3/16" flat
- E9 #4-40 3/16" flat
- E10 BNC lock washer
- E11 BNC nut
- E12 BNC lock washer
- E13 BNC nut
- E14 BNC lock washer
- E15 BNC nut
- E16 BNC lock washer
- E17 BNC nut
- E18 BNC lock washer
- E19 BNC nut
- E20 BNC lock washer
- E21 BNC nut
- E22 BNC lock washer
- E23 BNC nut
- E24 BNC lock washer
- E25 BNC nut
- E26 BNC lock washer
- E27 BNC nut
- E28 BNC lock washer
- E29 BNC nut
- E30 BNC lock washer
- Mouser 571-1-1634817-0
- E31 BNC nut
- Mouser 571-1-1634816-0
- H1 Handle, 1.25"
- H2 Handle, 1.25"
- Mouser 534-9106
- H3 Ferrule
- H4 Ferrule
- H5 Ferrule
- H6 Ferrule
- Mouser 534-9121
- M1 #6-32 1/4" flat
- M2 #6-32 1/4" flat
- M3 #6-32 1/4" flat
- M4 #6-32 1/4" flat
- M5 #6-32 1/4" flat
- M6 #6-32 1/4" flat
- McMaster-Carr 91099A205
- M7 #6-32 3/8" flat
- M8 #6-32 3/8" flat
- M9 #6-32 3/8" flat
- M10 #6-32 3/8" flat
- McMaster-Carr 91099A215

- E32 #4-40 3/16" flat
- E33 #4-40 3/16" flat
- E34 #4-40 3/16" flat
- E35 #4-40 3/16" flat
- E36 #4-40 3/16" flat
- E37 #4-40 3/16" flat
- E38 #4-40 3/16" flat
- E39 #4-40 3/16" flat
- E40 #4-40 3/16" flat
- E41 #4-40 3/16" flat
- E42 #4-40 3/16" flat
- E43 #4-40 3/16" flat
- E44 #4-40 3/16" flat
- E45 #4-40 3/16" flat
- E46 #4-40 3/16" flat
- E47 #4-40 3/16" flat
- E48 #4-40 3/16" flat
- E49 #4-40 3/16" flat
- E50 #4-40 3/16" flat
- E51 #4-40 3/16" flat
- E52 #4-40 3/16" flat
- E53 #4-40 3/16" flat
- E54 #4-40 3/16" flat
- E55 #4-40 3/16" flat
- E56 #4-40 3/16" flat
- E57 #4-40 3/16" flat
- E58 #4-40 3/16" flat
- E59 #4-40 3/16" flat
- E60 #4-40 3/16" flat
- E61 #4-40 3/16" flat
- E62 #4-40 3/16" flat
- E63 #4-40 3/16" flat
- E64 #4-40 3/16" flat
- E65 #4-40 3/16" flat
- E66 #4-40 3/16" flat
- E67 #4-40 3/16" flat
- E68 #4-40 3/16" flat
- E69 #4-40 3/16" flat
- E70 #4-40 3/16" flat
- E71 #4-40 3/16" flat
- E72 #4-40 3/16" flat
- E73 #4-40 3/16" flat
- E74 #4-40 3/16" flat
- E75 #4-40 3/16" flat

PN1
Comparator board
LIGO
D070568-E

- C1 BNC cable
- C2 BNC cable
- C3 BNC cable
- C4 BNC cable
- C5 BNC cable
- C6 BNC cable
- L-Com CC174-1
- C7 Cable, 1 pair
- Mouser 566-9501-100

PN2
1U chassis
LIGO
D070012-A

PN3
Front Panel
LIGO
D1001371-v3

PN4
Rear Panel
LIGO
D1001372-v3

Cut cable C3 to length. Part number is 100' spool.
Select correct assembly variant for comparator and counter, respectively.

Title			
Timing Comparator/Counter			
Size	Number	Revision	
A	D1001370	2	
Date:	8/20/2010	Sheet 1 of	1
File:	C:\Users\...\Comparator1.SchDoc	Drawn By:	Daniel Sigg