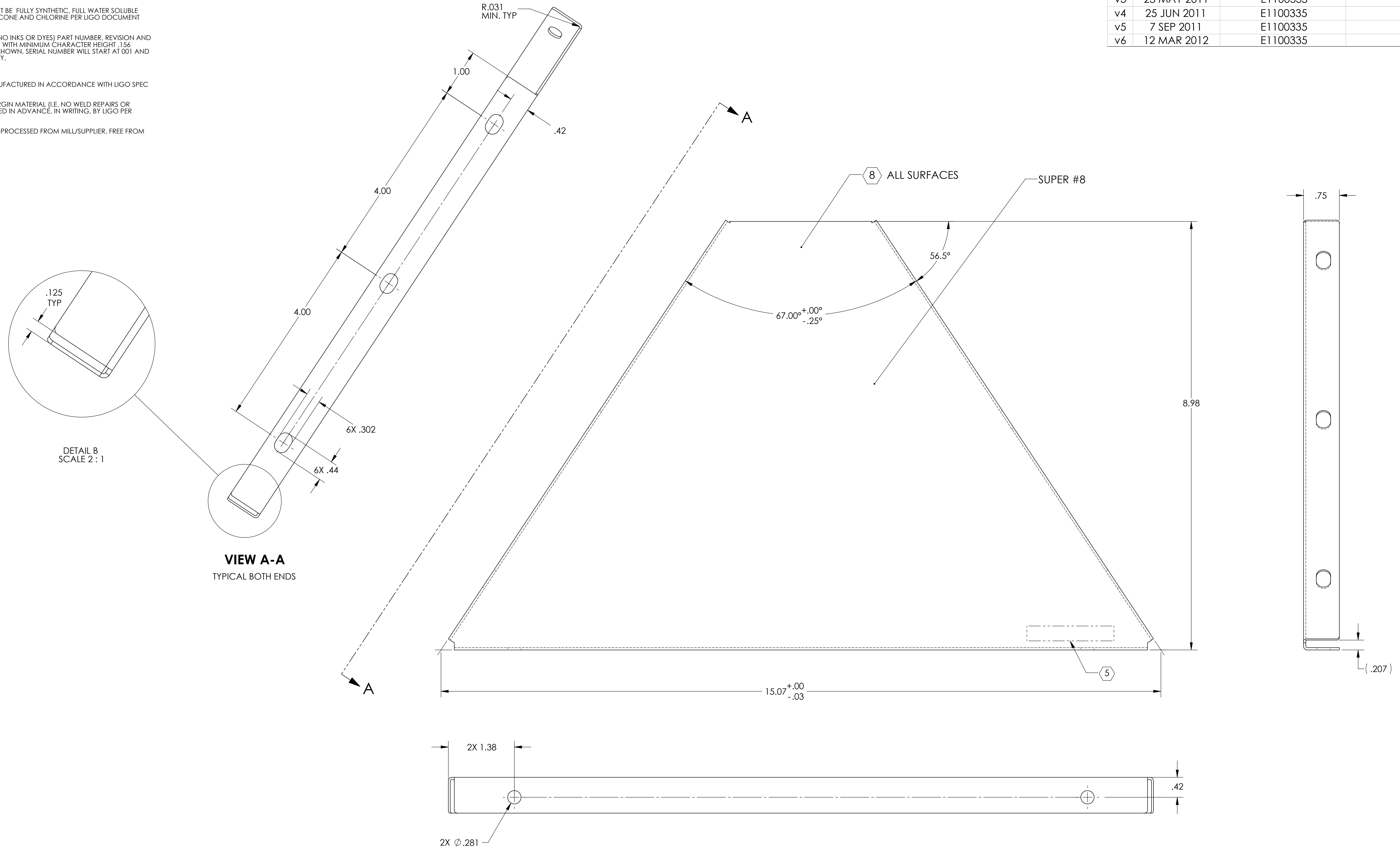


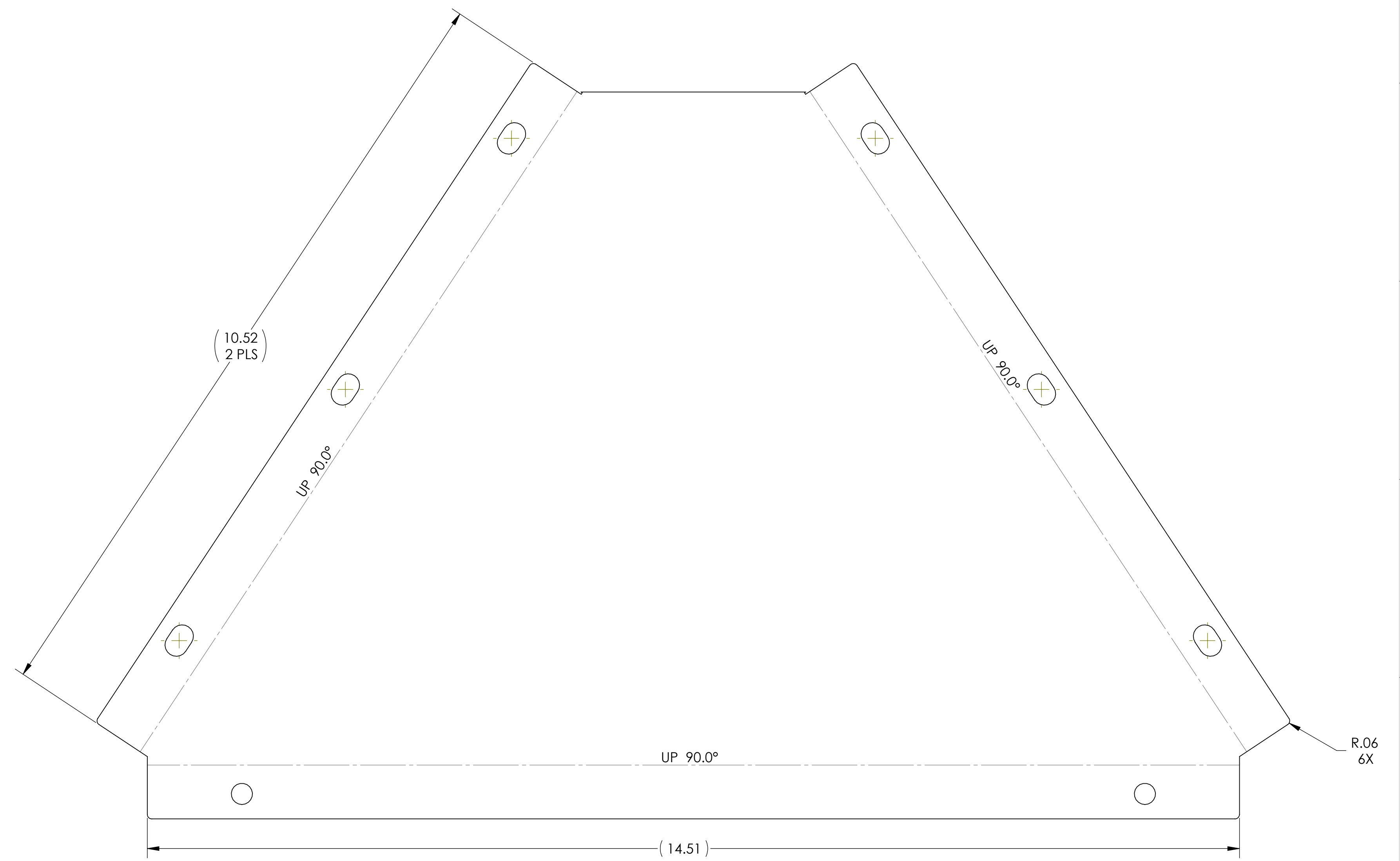
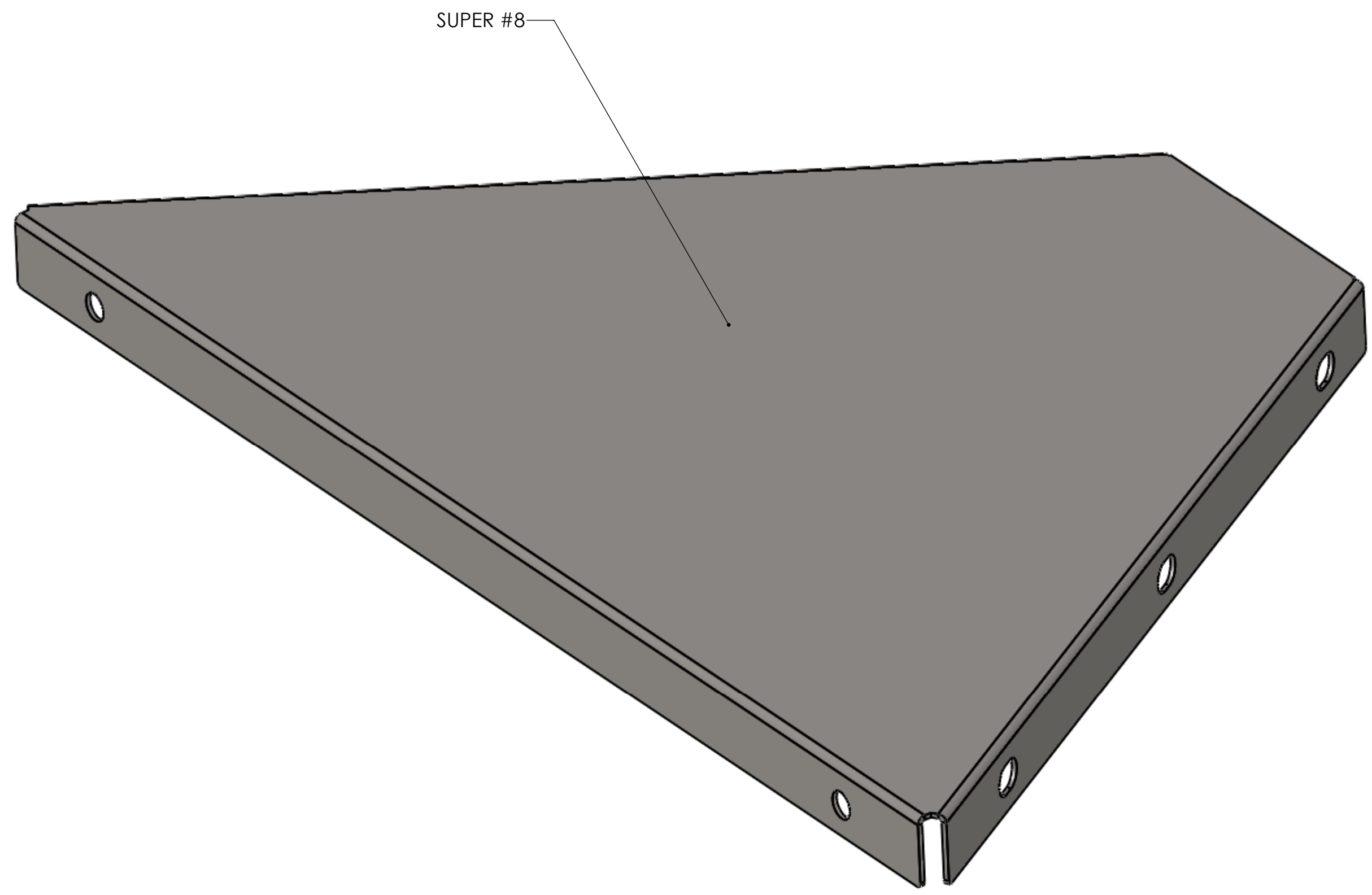
- NOTES: UNLESS OTHERWISE SPECIFIED**
1. INTERPRET DRAWING PER ASME Y14.5-1994.
 2. REMOVE ALL SHARP EDGES, .005-.015 ON ALL EDGES AND HOLES.
 3. DO NOT SCALE FROM DRAWING.
 4. ALL MACHINE FLUIDS MUST BE FULLY SYNTHETIC, FULL WATER SOLUBLE AND FREE OF SULFUR, SILICONE AND CHLORINE PER LIGO DOCUMENT E0900237.
 5. MECHANICALLY STAMP (NO INKS OR DYES) PART NUMBER, REVISION AND SERIAL NUMBER .020 DEEP WITH MINIMUM CHARACTER HEIGHT .156 APPROXIMATELY WHERE SHOWN. SERIAL NUMBER WILL START AT 001 AND PROCEED CONSECUTIVELY. EXAMPLE: D100XXX-V1
S/N 001
 6. ALL PARTS SHALL BE MANUFACTURED IN ACCORDANCE WITH LIGO SPEC E0900364.
 7. ALL MATERIAL IS TO BE VIRGIN MATERIAL (I.E. NO WELD REPAIRS OR PLUGS) UNLESS APPROVED IN ADVANCE, IN WRITING, BY LIGO PER SPECIFICATION E0900364.
 8. SURFACE FINISH TO BE AS-PROCESSED FROM MILL/SUPPLIER, FREE FROM SCRATCHES OR GOUGES.
 9. DELETED
 10. DELETED.
 11. DELETED.

REV.	DATE	DCN #	DRAWING TREE #
v1	16 JUN 2010	E1000285	-
v2	08 APR 2011	E1100216	-
v3	23 MAY 2011	E1100335	-
v4	25 JUN 2011	E1100335	-
v5	7 SEP 2011	E1100335	-
v6	12 MAR 2012	E1100335	-



NOTES AND TOLERANCES: (UNLESS OTHERWISE SPECIFIED)				LIGO CALIFORNIA INSTITUTE OF TECHNOLOGY MASSACHUSETTS INSTITUTE OF TECHNOLOGY		PART NAME	
DIMENSIONS ARE IN INCHES				SEE TOP LEFT FOR NOTES		ARM BAFFLE MIDDLE REINFORCING PLATE	
TOLERANCES: .XX ± .03 .XXX ± .015				MATERIAL 18 GAUGE 304 SSSL		FINISH 8 SUPER #8	
ANGULAR ± 1.0°				NEXT ASSY D1000977		DESIGNER N.Nguyen 01 Jun 2010	
						DRAFTER TQ. NGUYEN 15 JUN 2010	
						CHECKER M. SMITH 02 AUG 2010	
						APPROVAL D. COYNE 10 AUG 2010	
						SIZE DWG. NO. D D1001365	
						REVISION V6	
						SCALE: 1:1 PROJECTION: SHEET 1 OF 2	

D1001365_A01 LIGO_AOS_ARM_Cavity Baffle Middle Reinforcing Plate PART PDM REV: X-026 DRAWING PDM REV: X-041



CALIFORNIA INSTITUTE OF TECHNOLOGY MASSACHUSETTS INSTITUTE OF TECHNOLOGY		
SIZE	DWG. NO.	REV.
D	D1001365	V6
SCALE: 1:1	PROJECTION:	SHEET 2 OF 2

D1001365_AduLIGO_AOS_ARM_Cavity_Baffle_Middle_Reinforcing_Plate_PART_PDM_REV_X-026_DRAWING_PDM_REV_X-041