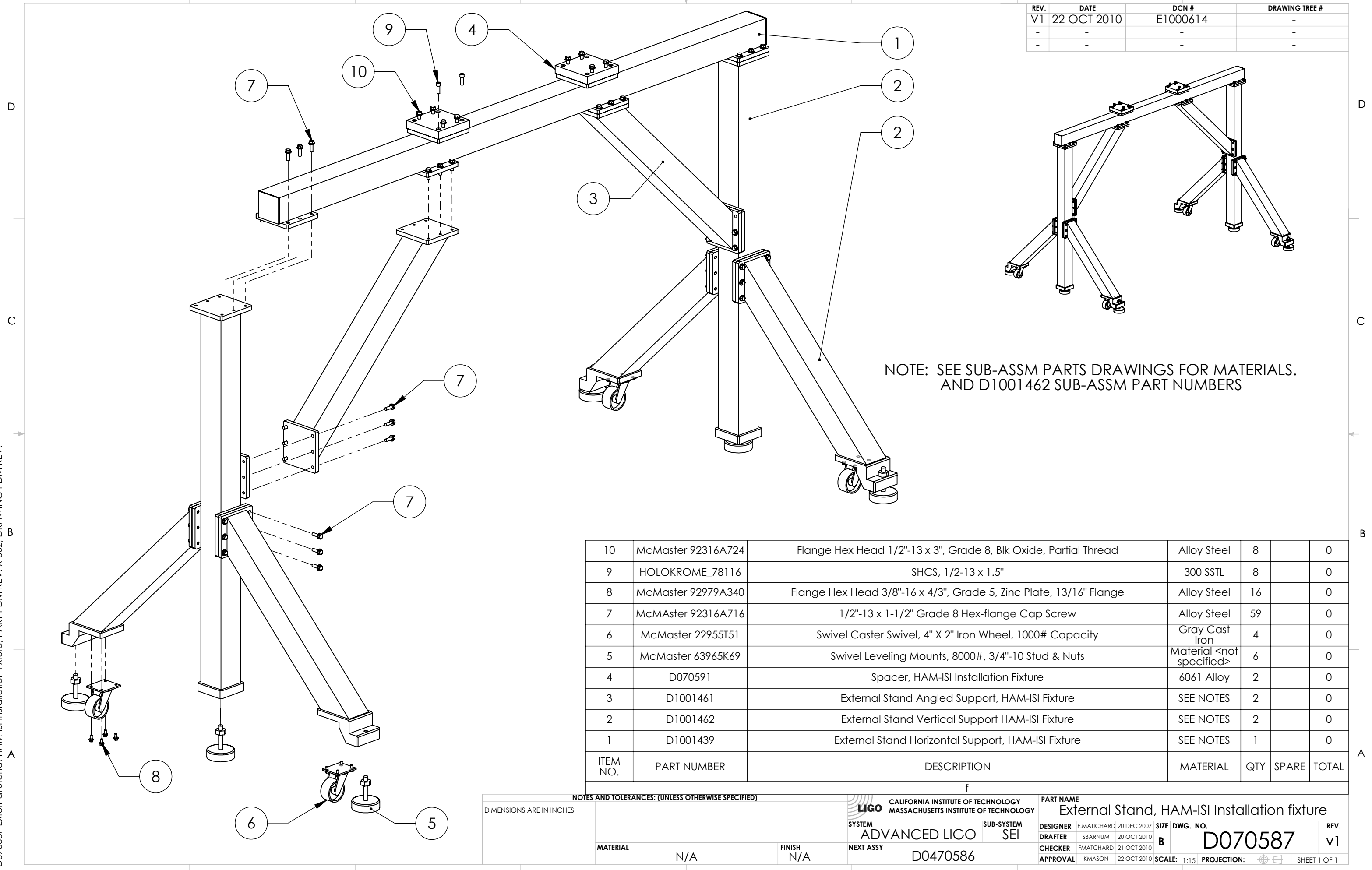


D070587 External Stand, HAM-ISI Installation fixture, PART PDM REV: X-002, DRAWING PDM REV:

REV.	DATE	DCN #	DRAWING TREE #
VI	22 OCT 2010	E1000614	-
-	-	-	-
-	-	-	-



NOTE: SEE SUB-ASSM PARTS DRAWINGS FOR MATERIALS.
AND D1001462 SUB-ASSM PART NUMBERS

ITEM NO.	PART NUMBER	DESCRIPTION	MATERIAL	QTY	SPARE	TOTAL
10	McMaster 92316A724	Flange Hex Head 1/2"-13 x 3", Grade 8, Blk Oxide, Partial Thread	Alloy Steel	8		0
9	HOLOKROME_78116	SHCS, 1/2-13 x 1.5"	300 SSTL	8		0
8	McMaster 92979A340	Flange Hex Head 3/8"-16 x 4/3", Grade 5, Zinc Plate, 13/16" Flange	Alloy Steel	16		0
7	McMaster 92316A716	1/2"-13 x 1-1/2" Grade 8 Hex-flange Cap Screw	Alloy Steel	59		0
6	McMaster 22955T51	Swivel Caster Swivel, 4" X 2" Iron Wheel, 1000# Capacity	Gray Cast Iron	4		0
5	McMaster 63965K69	Swivel Leveling Mounts, 8000#, 3/4"-10 Stud & Nuts	Material <not specified>	6		0
4	D070591	Spacer, HAM-ISI Installation Fixture	6061 Alloy	2		0
3	D1001461	External Stand Angled Support, HAM-ISI Fixture	SEE NOTES	2		0
2	D1001462	External Stand Vertical Support HAM-ISI Fixture	SEE NOTES	2		0
1	D1001439	External Stand Horizontal Support, HAM-ISI Fixture	SEE NOTES	1		0

NOTES AND TOLERANCES: (UNLESS OTHERWISE SPECIFIED)

DIMENSIONS ARE IN INCHES

MATERIAL		FINISH		NEXT ASSY		CALIFORNIA INSTITUTE OF TECHNOLOGY MASSACHUSETTS INSTITUTE OF TECHNOLOGY SYSTEM ADVANCED LIGO SUB-SYSTEM SEI		PART NAME External Stand, HAM-ISI Installation fixture		REV.
N/A		N/A		D0470586		DESIGNER F.MATCHARD 20 DEC 2007 DRAFTER SBARNUM 20 OCT 2010 CHECKER FMATCHARD 21 OCT 2010 APPROVAL KMAISON 22 OCT 2010		SIZE DWG. NO. B D070587		v1
SCALE: 1:15								PROJECTION:		SHEET 1 OF 1