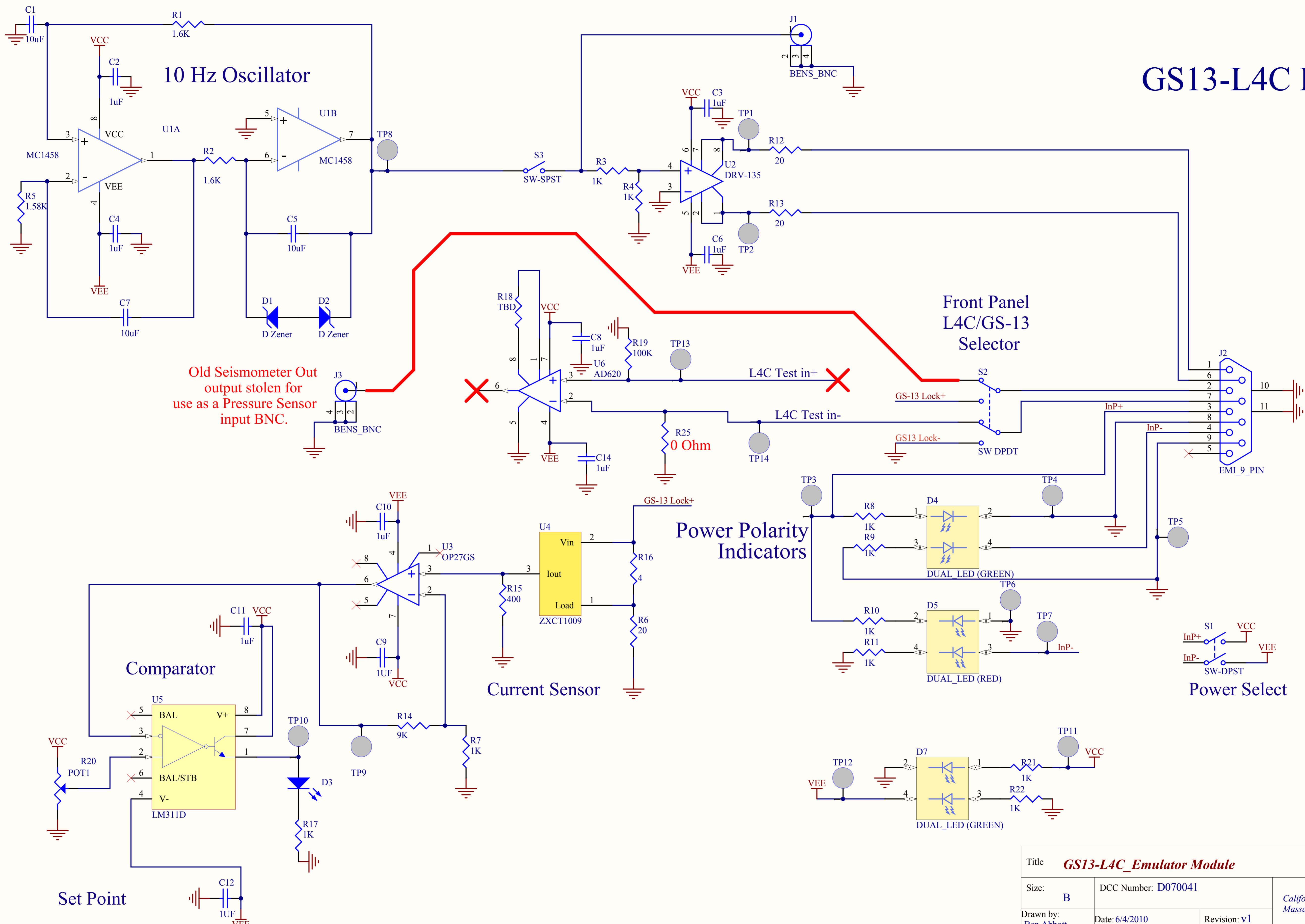


# GS13-L4C Emulator



Old Seismometer Out  
output stolen for  
use as a Pressure Sensor  
input BNC.

Power Polarity  
Indicators

Current Sensor

Power Select

Title <b>GS13-L4C Emulator Module</b>		
Size: <b>B</b>	DCC Number: D070041	Ligo Project California Institute of Technology Massachusetts Institute of Technology
Drawn by: <b>Ben Abbott</b>	Date: 6/4/2010	
File: C:\Ben\Seismic\ISLASTI_ISI\Tester Modules\GS13_L4C_Emulator\RedTime: 9/15/2010 3:36 AM Sheet 1 of 1		

