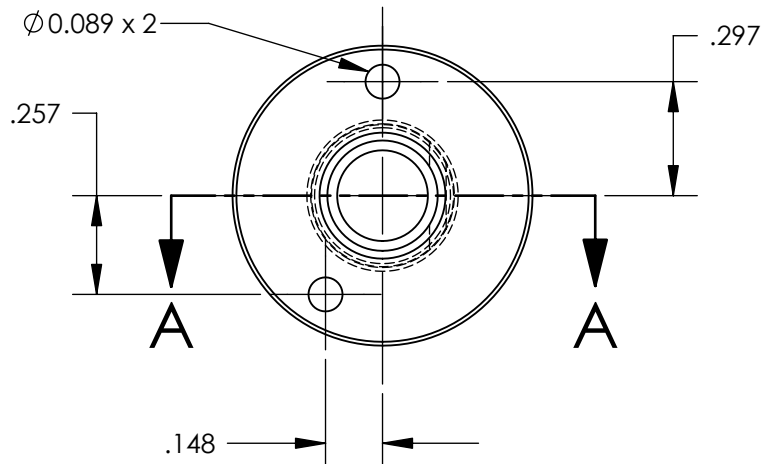
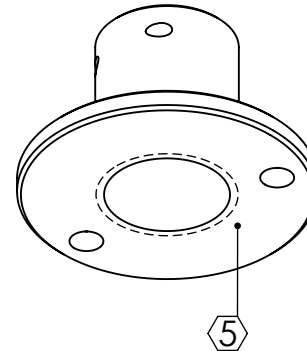
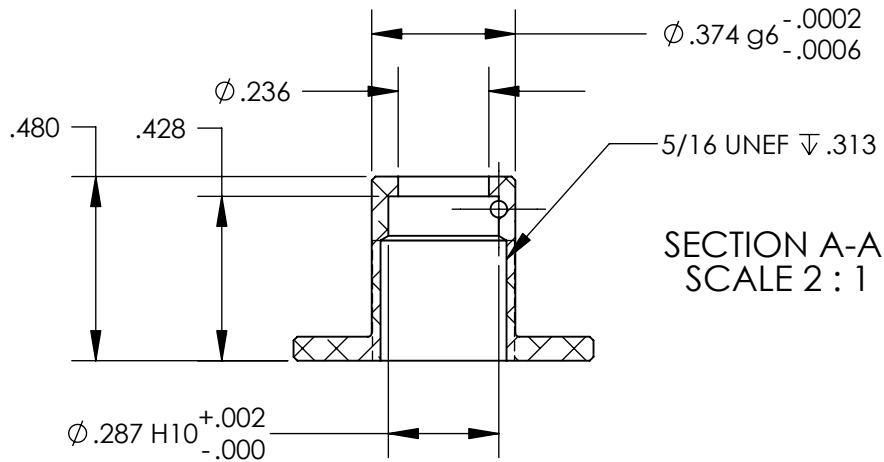
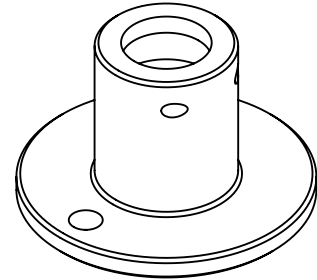
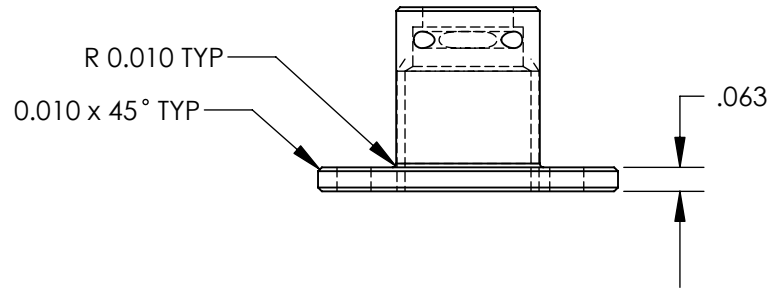
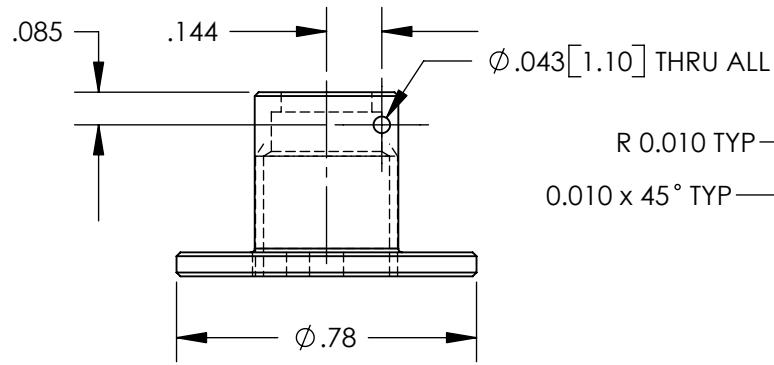


REV.	DATE	DCN #	DRAWING TREE #
A	6 NOV 06	E060262	E060243
B	1 APR 07	E060262	E060243
C	12 DEC 07	E060262	E060243



NOTES: (UNLESS OTHERWISE SPECIFIED)

- DO NOT SCALE FROM DRAWING
 - REMOVE ALL SHARP EDGES, R.02 MAX.
 - ALL MACHINING FLUIDS SHALL BE WATER SOLUBLE AND FREE OF SULFUR, CHLORINE AND SILICONE, SUCH AS CINCINNATI MILACRON'S CIMTECH 410 (STAINLESS STEEL)
 - HOLE & SHAFT FITS ARE ALSO GIVEN ACCORDING TO BS4500:1969
- Ⓢ SCRIBE, ENGRAVE OR STAMP DRAWING PART NUMBER, REVISION ON NOTED SURFACE OF PART AND THEN A THREE DIGIT SERIAL NUMBER. SERIAL NUMBERS START AT 001 FOR THE FIRST PART AND PROCEED CONSECUTIVELY. USE .07" HIGH CHARACTERS. A VIBRATORY TOOL MAY BE USED. EXAMPLE: D060112-C
SN 001

DIMENSIONS ARE IN INCHES [mm]

TOLERANCES:

.XX ± 0.01
.XXX ± 0.005

ANGULAR ± 0.5 °

MATERIAL
A/Alloy 6082

FINISH
32 μ inch

	NAME	DATE
DRAWN	S. Bookes	26 JUN 06
CHECKED	S. Aston	22 AUG 06
APPROVED	A. Vecchio	31 OCT 06



CALIFORNIA INSTITUTE OF TECHNOLOGY
MASSACHUSETTS INSTITUTE OF TECHNOLOGY
IGR, GLASGOW UNIVERSITY GEO 600 GROUP
UNIVERSITY OF BIRMINGHAM

SYSTEM ADVANCED LIGO

SUB-SYSTEM SUS

NEXT ASSY D060217 BOSEM PD Assembly

PART NAME PD Carrier

SIZE DWG. NO. D060112

REV. C

SCALE: 1:1 **PROJECTION:** **SHEET 1 OF 1**