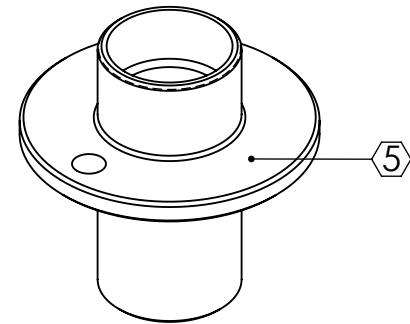
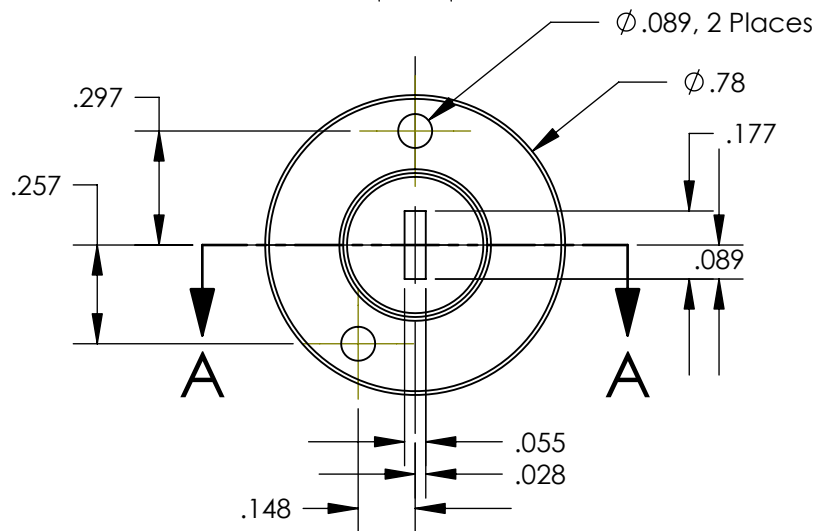
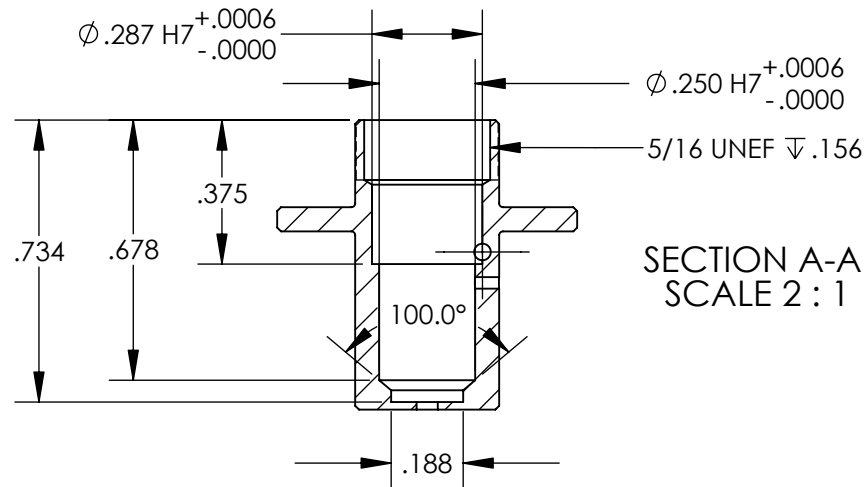
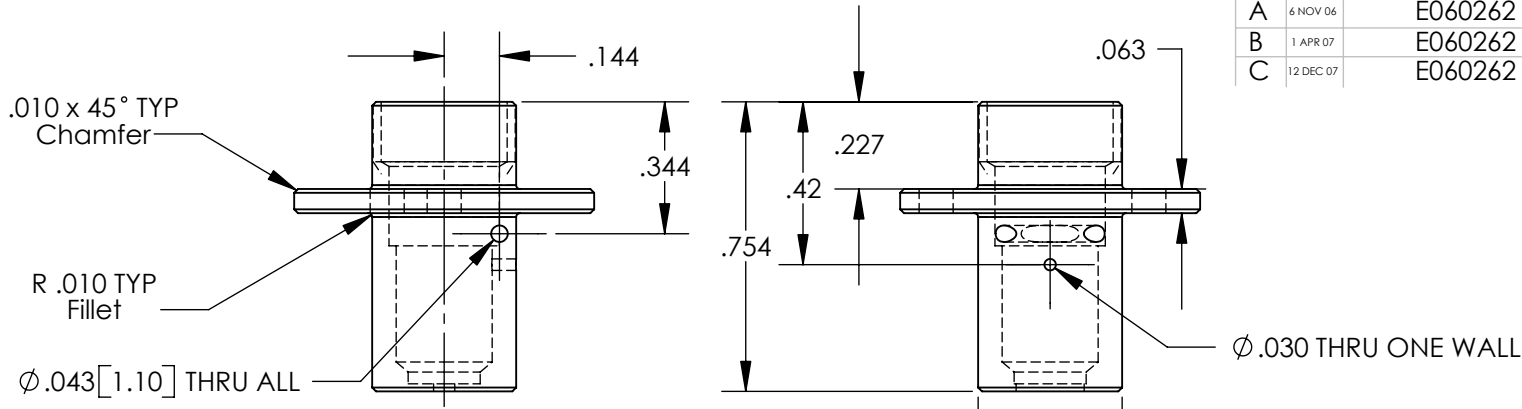


REV.	DATE	DCN #	DRAWING TREE #
A	6 NOV 06	E060262	E060243
B	1 APR 07	E060262	E060243
C	12 DEC 07	E060262	E060243



**NOTES: (UNLESS OTHERWISE SPECIFIED)**

- DO NOT SCALE FROM DRAWING
  - REMOVE ALL SHARP EDGES, R.02 MAX.
  - ALL MACHINING FLUIDS SHALL BE WATER SOLUBLE AND FREE OF SULFUR, CHLORINE AND SILICONE, SUCH AS CINCINNATI MILACRON'S CIMTECH 410 (STAINLESS STEEL)
  - HOLE & SHAFT FITS ARE ALSO GIVEN ACCORDING TO BS4500:1969
- Ⓢ SCRIBE, ENGRAVE OR STAMP DRAWING PART NUMBER, REVISION ON NOTED SURFACE OF PART AND THEN A THREE DIGIT SERIAL NUMBER. SERIAL NUMBERS START AT 001 FOR THE FIRST PART AND PROCEED CONSECUTIVELY. USE .07" HIGH CHARACTERS. A VIBRATORY TOOL MAY BE USED. EXAMPLE: D060111-C SN 001

DIMENSIONS ARE IN INCHES [mm]

TOLERANCES:  
 .XX ± 0.01  
 .XXX ± 0.005

ANGULAR ± 0.5 °

**MATERIAL**  
 A/Alloy 6082

**FINISH**  
 32 μ inch

	NAME	DATE
<b>DRAWN</b>	S. Bookes	26 JUN 06
<b>CHECKED</b>	S. Aston	11 SEP 06
<b>APPROVED</b>	A. Vecchio	31 OCT 06

**LIGO** CALIFORNIA INSTITUTE OF TECHNOLOGY  
 MASSACHUSETTS INSTITUTE OF TECHNOLOGY  
 IGR, GLASGOW UNIVERSITY GEO 600 GROUP  
 UNIVERSITY OF BIRMINGHAM

**SYSTEM**  
 ADVANCED LIGO

**SUB-SYSTEM**  
 SUS

**NEXT ASSY**  
 D060216 BOSEM IRLED Assembly

**PART NAME**  
 IRLED Carrier

**SIZE DWG. NO.**  
 A D060111

**SCALE:** 1:2 **PROJECTION:** **SHEET 1 OF 1**

**REV.**  
 C