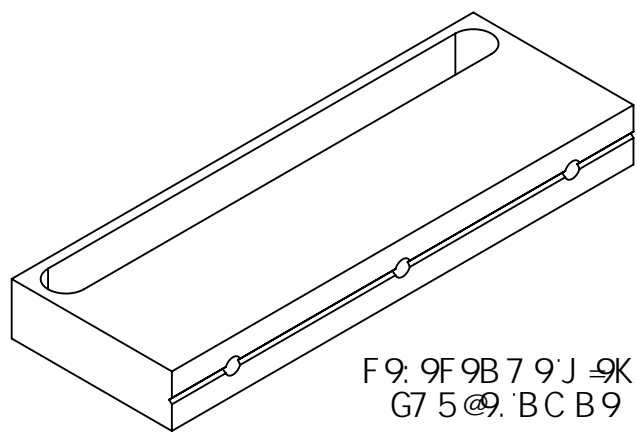


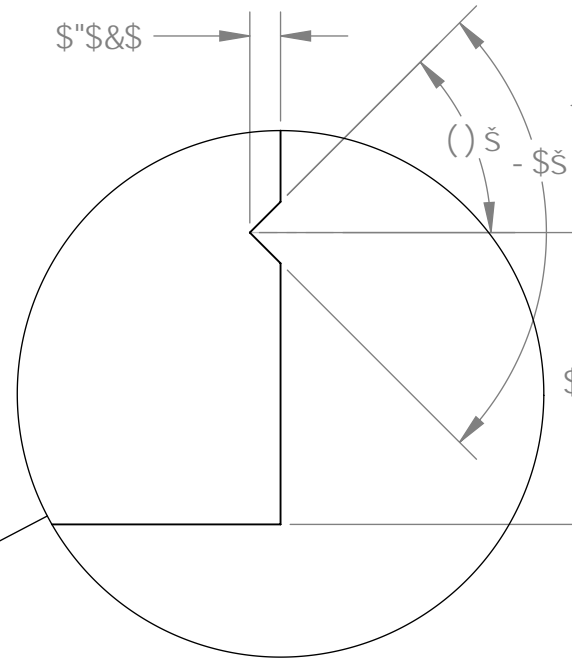
BCHG7CBHBI 98.  
 G7 F6929B: F5J9T5 J6F5HC FMHC C@A 5M691 G98LZ  
 509F A 5F? CFA 97<5B-75@MG5A DIBC -B?GCF  
 8MGE:8F5K -B: D5FHBI A 69F2F9J GC B 15B8  
 J5F5BHCF THD9± 5DD@7 56@9C B B CH98 Q F: 57 9  
 C: D5FH: C@C K 98 C B H-9B 9LH@9K H: 5 H: F99  
 8± #H9F 5@BI A 69F\* 9F-5@BI A 69FGH5FH5H55%  
 :CF H:9: FGH5FH7 @9 5B8 DFC 7 998 7 C B G97I HJ 9@M  
 I 9A -B A I A \$%<± < 7 <5F57 HFGZ1 B @9GH:9 G@P  
 C: H:9D5FH8 7 H5H9GA 5@9F 7 <5F57 HFG  
 9L5A D@9 8LLLLLLLLIJ M HMD9LLZGB LLL

F9J "	85H9	87B :	8F5K -B: HF99,
j &	% >5B &\$%0%	!	!
j '	%\$: 96 &\$%0%	99%\$\$\$ -	!
!	!	!	!

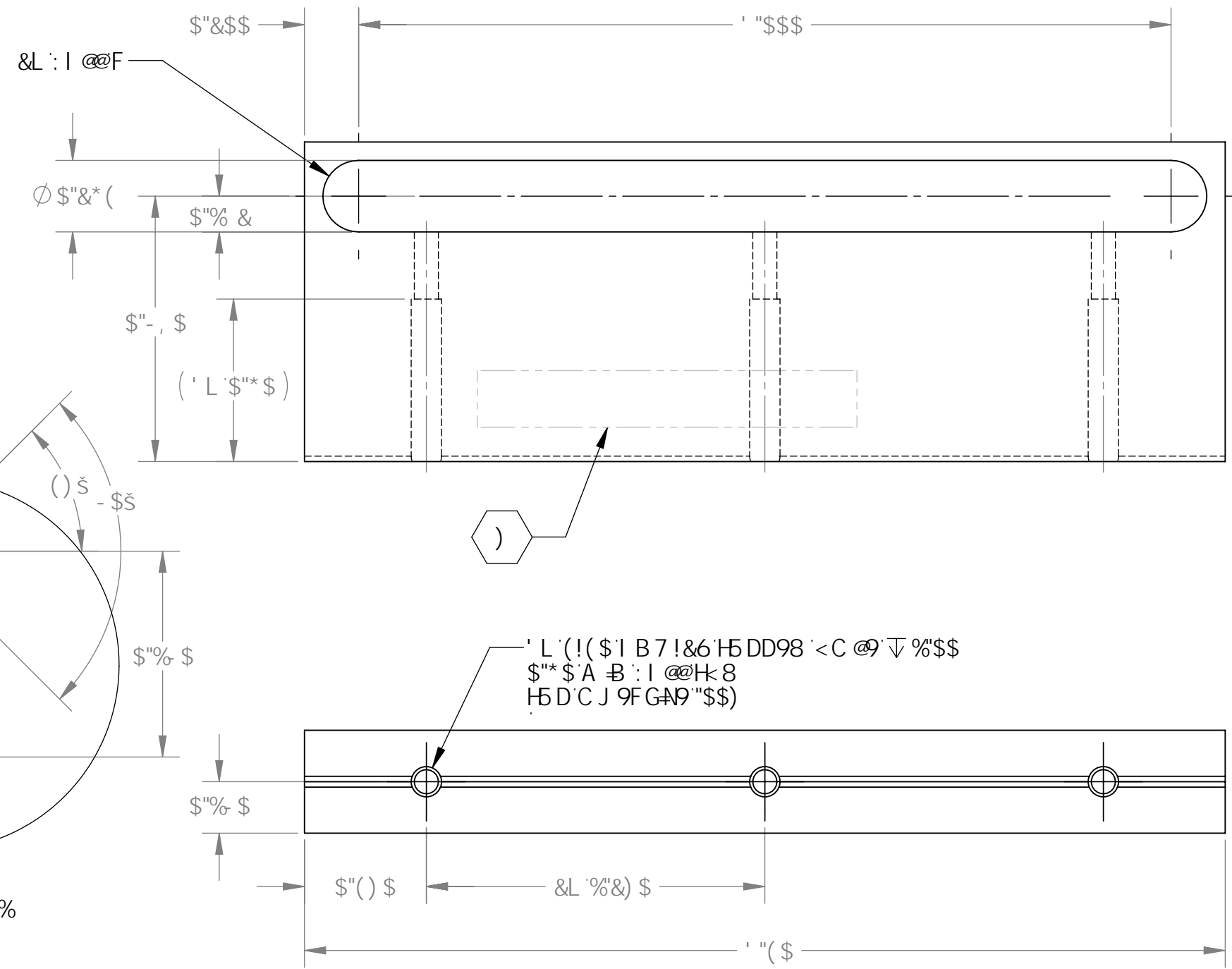
8 \*\*\*\*\*5DDFCLA 5HPK 9± <H1 %00 @6G  
 +\*\*\* A 57 <B95@G F: 57 9GHC F9A CJ 9CL-89G5B8 A @: B 4<Z  
 \*\*\*\*\*I 9C: 5 6F 5GJ 9F9A CJ 5@H7 <B-E I 9G-6BC H5@C K 98"  
 \*\*\*\*\*F9 9F HC @: C19\$- \$\$' (\*  
 \*\*\*\*\*5 @ D5FHG<5 @69A 5BI: 57H F98 -B 577CF85B79K H-  
 \*\*\*\*\*@: C @D97 ± 7 5HC B 9\$- \$\$' (\*  
 \*\*\*\*\*5 @A 5HF 5@GHC 69J F: -B A 5HF-5@HY\* BC K 9@8 F9D5 F@Z  
 \*\*\*\*\*D@: GCF F97 M @98 A 5HF-5@B C F9D5 FGC<5 @69A 5891 B @9G  
 \*\*\*\*\*5DDFCJ 98 -B 58J 5B7 925B8 -B K F HB; Z6M@: C @6CF5HC FM  
 \*\*\*\*\*F9 9F HC @: C19\$- \$\$' (\*  
 %\$\* Q F: 57 9: B 4< HC 69 5QDFC 7 9G98 : FCA A @G DD@9FZ: F99: FCA  
 \*\*\*\*\*G7 F5H7 <9GCF; C1: 9G



F9: 9F9B 7 9 J 9K  
 G7 5 @9 BC B9



8 9 H 5 @ 5  
 G7 5 @9 , : %



' L' (! (\$ I B 7 ! & 6 H 5 DD98 < C @ ' ∇ % '\$ \$  
 \$\* \$ A - B : I @ H 8  
 H 5 D C J 9 F G A 9 "\$ \$)

8%\$\$\$ (&!%U@ C Z 7 5 6 @G < 5 A Z 6 5 G 9 D @ H Z D 5 F H D 8 A F 9 J L I \$\$\$ Z 8 F 5 K - B : D 8 A F 9 J L I \$\$\$

BCHG5B8HC @F5B7 9G TI B @GCH: 9FK 49 @D97 ± 98L		LIGO 75@CFB5-BGHH H9C: H97 <BC@: M D5FH5A 9	
8 A 9BGC BG5F9 -B B7 <9G	% B H F D F 9 H 8 F 5 K - B : D 9 F 5 G A 9 M K ( ) 1 % - ( * & F 9 A C J 9 5 @ G < 5 F D 9 8 : 9 2 ' S S ' I ' S % ' : C F A 5 7 < B 9 8 D 5 F H G F C I B 8 5 @ 9 8 : 9 G 5DDFCLA 5H9MF *S&: CF G-99HA 9H5@D5FHG	U@ C Z 7 5 6 @ 6 F 5 7 ? 9 H < 5 A Z 6 5 G 9 D @ 5 H 9	
HC @9F 5B7 9G TL ± \$& LLL ± '\$\$)	* B C H G 7 5 @ 9 : F C A 8 F 5 K - B : (* 5 @ 9 A 5 7 - B - B : @ 8 G A I Q 1 6 9 : 1 @ M G B H : 9 H 7 Z : 1 @ M K 5 H F G C @ 6 @ 9 5 B 8 : F 9 9 C : Q @ I F 2 G @ 7 C B 9 2 5 B 8 7 < @ F B 9	GMBA 58J 5B7 98 @ C	G @ GMBA 89G: B9F > 85J-6 &A 5M&S%8 G@9 BK: "BC"
5B: I @5F ± \$) *	A 5HF-5@ *\$%H* 5	B9L H5GGM 8%\$\$\$ ( &!% j'	8F5: HF > 85J-6 &A 5M&S%8 6 8%\$\$\$ ( &!% j'
		7 < 97 ? 9F G@: 5B7 @9 %\$ : 96 &\$%0%	5DDFCJ 5@ G7 5 @9 &% DFC > 97 HCB. G< 99H% C: %