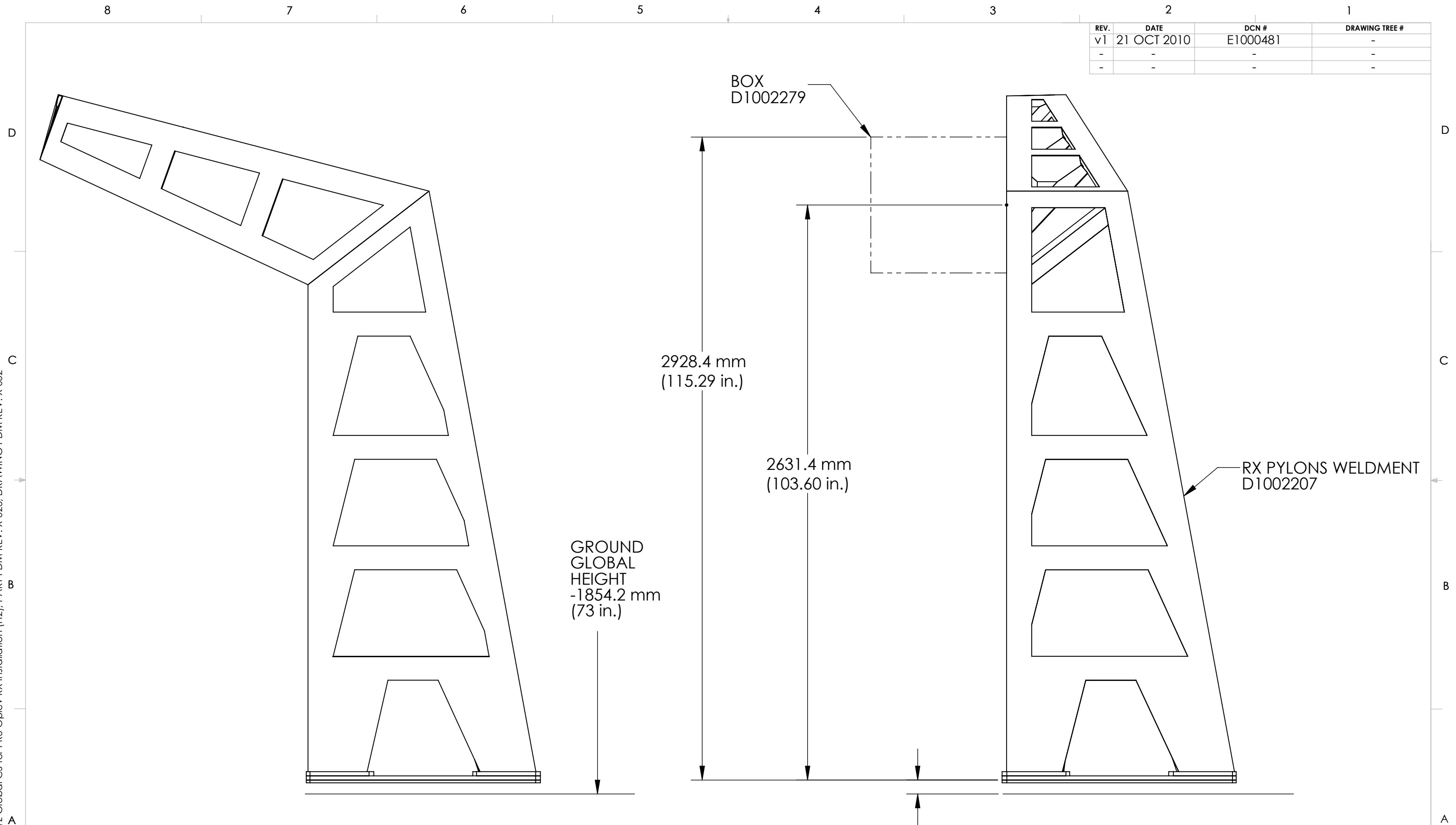


D1001171 aLIGO AOS XYZ Global CS for PR3 Oplev RX Installation (H2), PART PDM REV: X-023, DRAWING PDM REV: X-002

REV.	DATE	DCN #	DRAWING TREE #
v1	21 OCT 2010	E1000481	-
-	-	-	-
-	-	-	-



LEFT HANDED GIRAFFE

NOTES AND TOLERANCES: (UNLESS OTHERWISE SPECIFIED)				LIGO CALIFORNIA INSTITUTE OF TECHNOLOGY MASSACHUSETTS INSTITUTE OF TECHNOLOGY		PART NAME	
DIMENSIONS ARE IN INCHES TOLERANCES: .XX ± .01 .XXX ± .005 ANGULAR ± 1.0°				1. INTERPRET DRAWING PER ASME Y14.5-1994. 2. REMOVE ALL SHARP EDGES, R.02 MIN. 3. DO NOT SCALE FROM DRAWING. 4. ALL MACHINING FLUIDS MUST BE FULLY SYNTHETIC, FULLY WATER SOLUBLE AND FREE OF SULFUR, SILICONE, AND CHLORINE.		DESIGNER C. CONLEY 23 FEB 2010 DRAFTER N. KILPATRICK 21 OCT 2010	
MATERIAL N/A		FINISH N/A μinch		SYSTEM ADVANCED LIGO SUB-SYSTEM AOS NEXT ASSY D1000420		SIZE DWG. NO. B D1001171 REV. v1	
				SCALE: 1:48		PROJECTION: SHEET 1 OF 1	

8 7 6 5 4 3 2 1