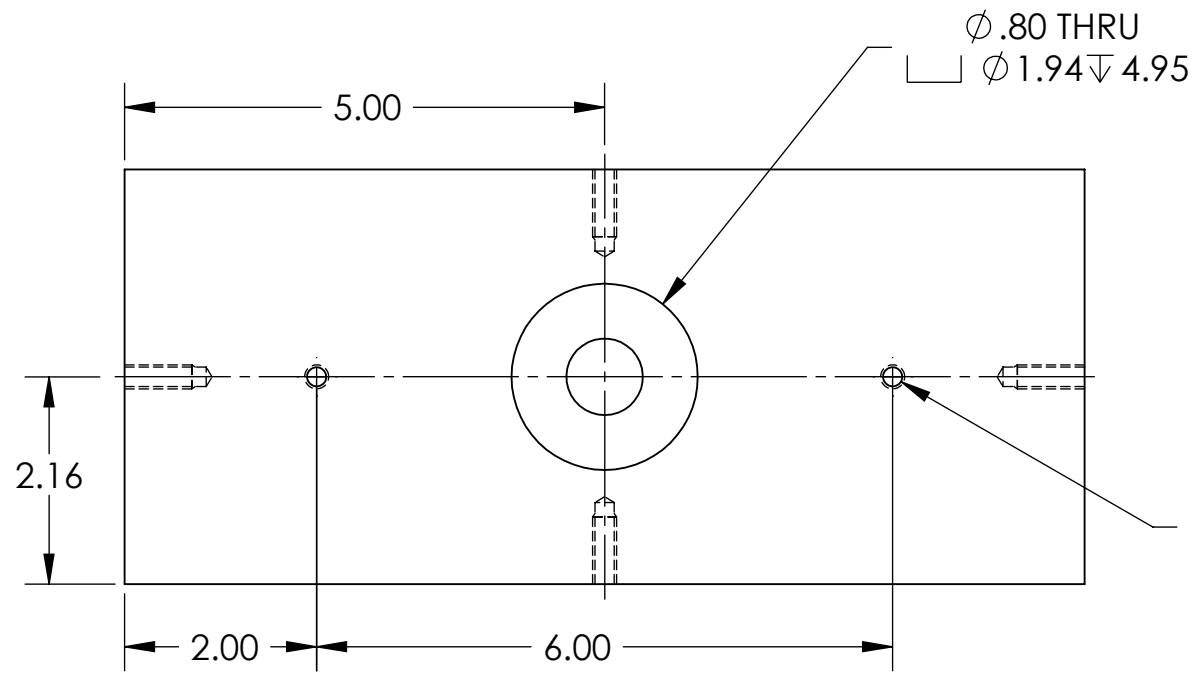


D1001097\_AdlIGO\_AOS\_SLC\_ARM Cavity Baffle Dummy Mass, PART PDM REV: X-013, DRAWING PDM REV: X-007

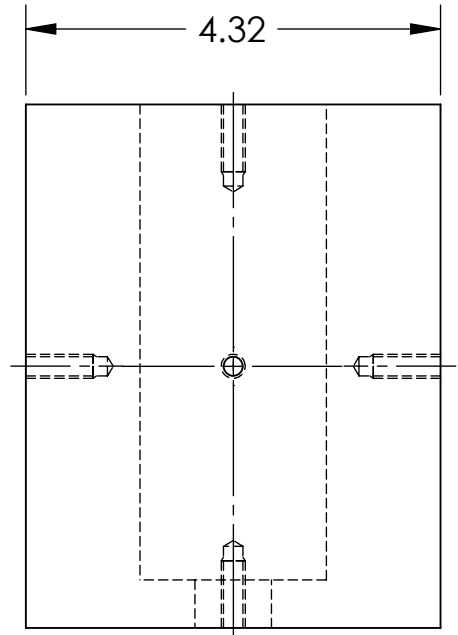
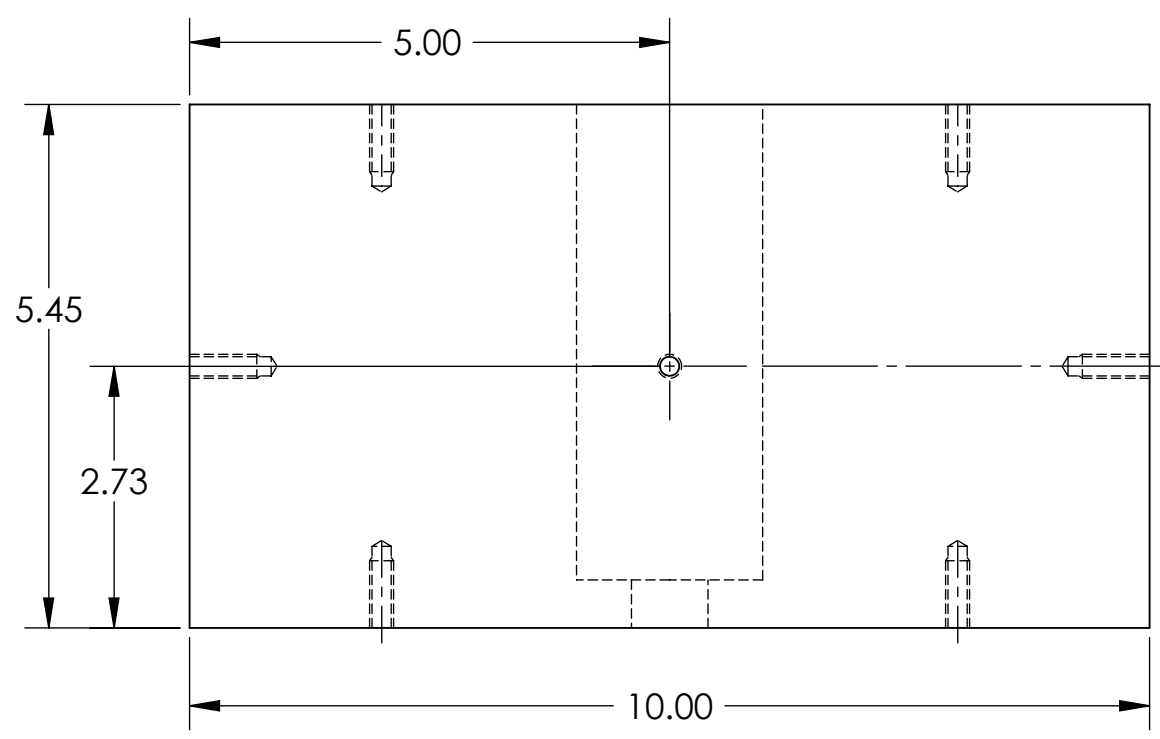
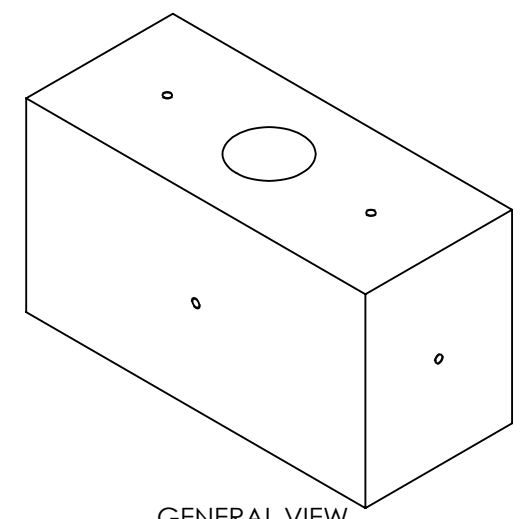
**NOTES CONTINUED:**

5. MASS = 63.72 lbs ±.02

REV.	DATE	DCN #	DRAWING TREE #
v1	07 JUN 2010	E1000191	



10X  $\phi .20 \nabla .85$   
 1/4-20 UNC - 2B  $\nabla .70$   
 +.005 OVERSIZE TAP  
 NEAR AND FAR SIDE



NOTES AND TOLERANCES: (UNLESS OTHERWISE SPECIFIED)				LIGO		CALIFORNIA INSTITUTE OF TECHNOLOGY		MASSACHUSETTS INSTITUTE OF TECHNOLOGY		PART NAME	
DIMENSIONS ARE IN INCHES TOLERANCES: .XX ± .01 .XXX ± .005 ANGULAR ± 1.0°				1. INTERPRET DRAWING PER ASME Y14.5-1994. 2. REMOVE ALL SHARP EDGES, R.02 MIN. 3. DO NOT SCALE FROM DRAWING. 4. ALL MACHINING FLUIDS MUST BE FULLY SYNTHETIC, FULLY WATER SOLUBLE AND FREE OF SULFUR, SILICONE, AND CHLORINE.		SYSTEM <b>ADVANCED LIGO</b>		SUB-SYSTEM <b>AOS</b>		<b>ARM CAVITY BAFFLE DUMMY MASS</b>	
										MATERIAL <b>304 SSSL</b>	
DRAPER TQ. NGUYEN 07 JUN 2010		CHECKER M. SMITH 30 JUN 2010		APPROVAL D. COYNE 20 SEP 2010		SCALE: 1:2		PROJECTION:		REV. <b>v1</b>	
SHEET 1 OF 1											