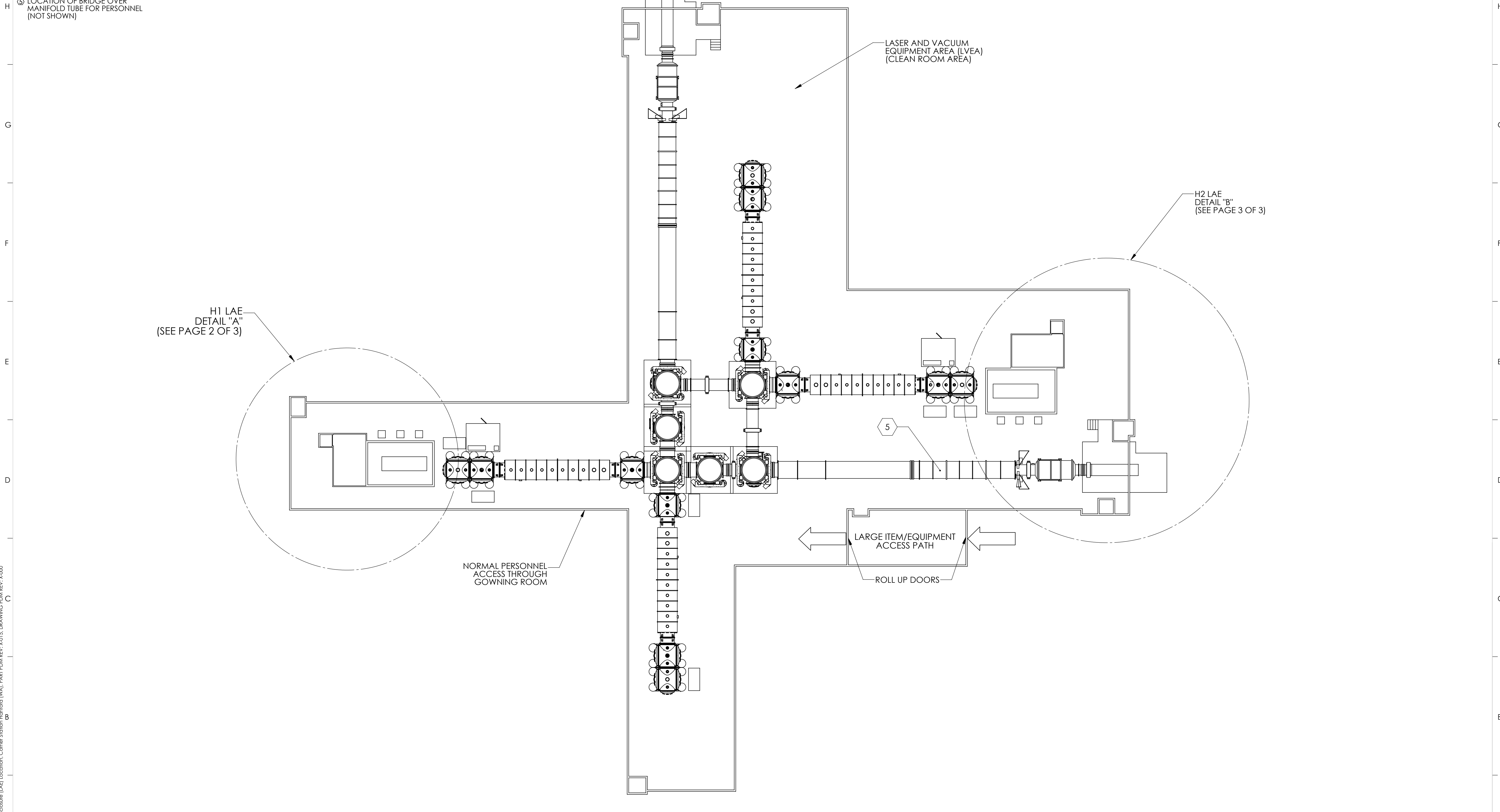


8 7 6 5 4 3 2 1

NOTES CONTINUED:  
 4- OVERHEAD CRANE (NOT SHOWN) HAS 26 FT 6 IN HOOK HEIGHT AND 5-TON CAPACITY OVER ENTIRE LVEA  
 5- LOCATION OF BRIDGE OVER MANIFOLD TUBE FOR PERSONNEL (NOT SHOWN)

REV.	DATE	DCN #	DRAWING TREE #
-	-	-	-
-	-	-	-
-	-	-	-



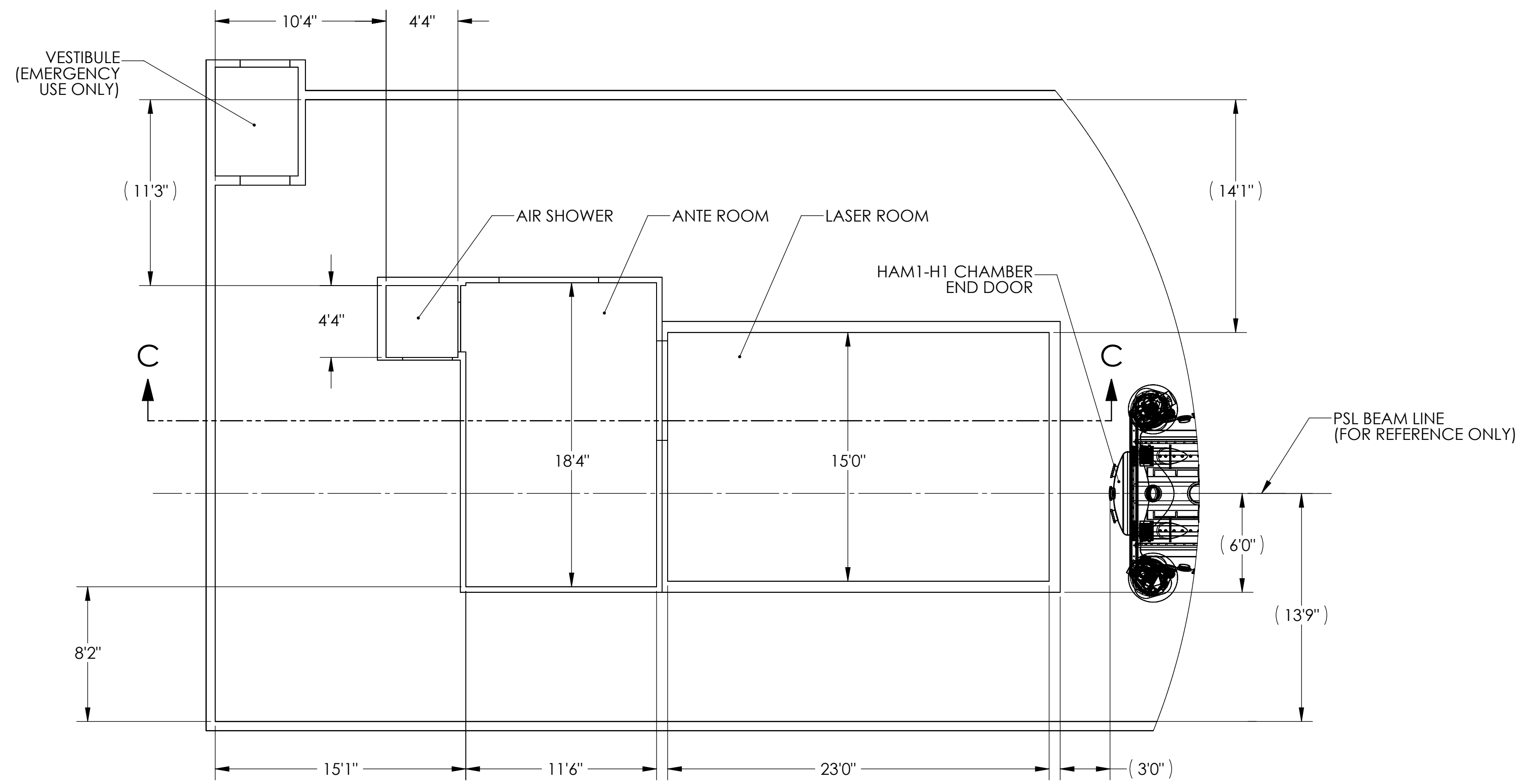
D1001072 AdvLIGO Laser Area Enclosure (LAE) Location, Corner Station Hanford (WA), Part FDM/REV: X-0.1.5, DRAWING FDM/REV: X-000

NOTES AND TOLERANCES: (UNLESS OTHERWISE SPECIFIED)	
1. INTERPRET DRAWING PER ASME Y14.5-1994. 2. DO NOT SCALE FROM DRAWING. 3. SEE D1000735-v2 FOR LASER AREA ENCLOSURE (LAE) DIMENSIONS AND C1000392-v3 FOR LAE SPECIFICATIONS	
DIMENSIONS ARE IN	
TOLERANCES:	
.XX ±	
.XXX ±	
ANGULAR ± °	
MATERIAL	N/A
FINISH	N/A μinch

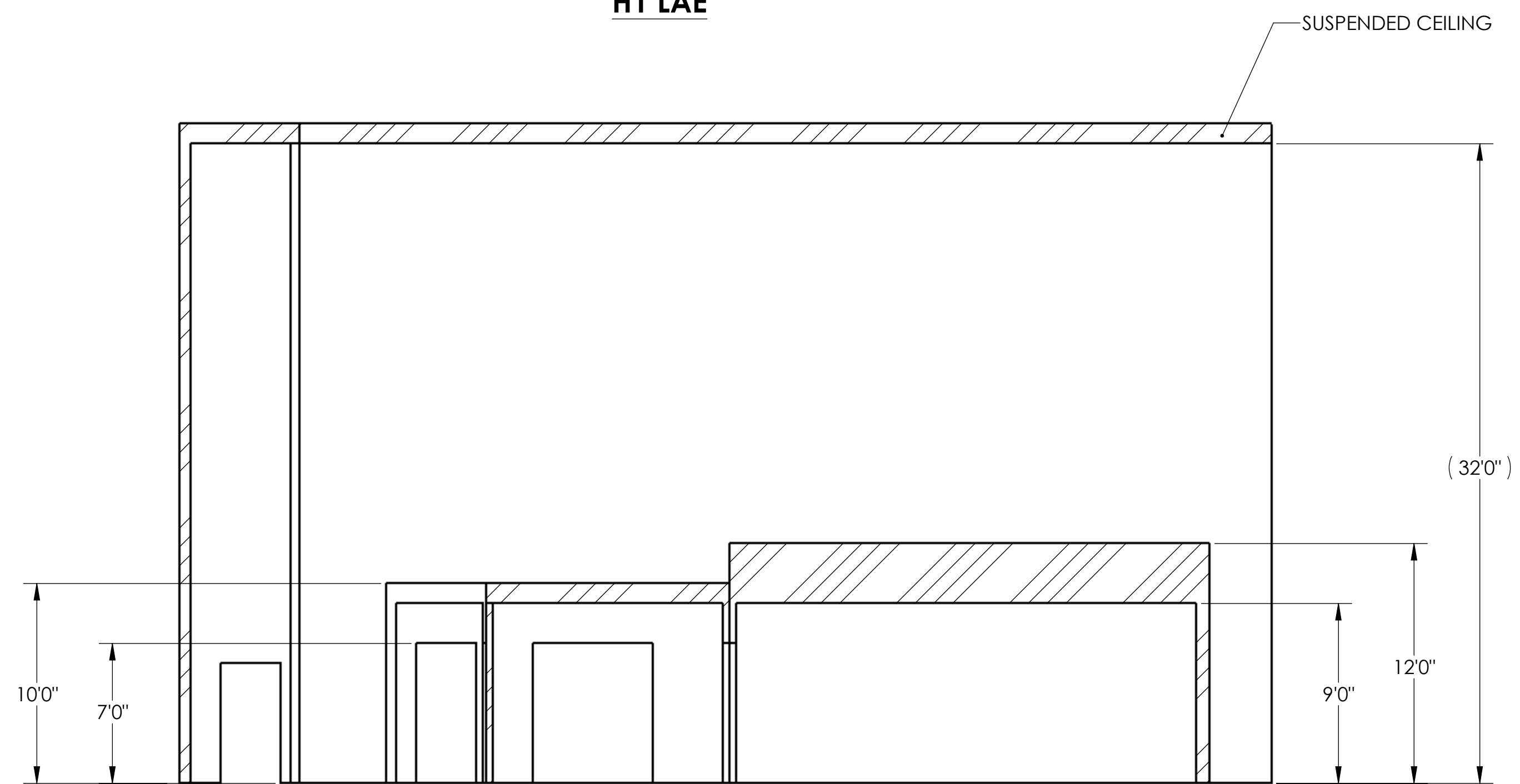
CALIFORNIA INSTITUTE OF TECHNOLOGY MASSACHUSETTS INSTITUTE OF TECHNOLOGY	
SYSTEM	Aligo
SUB-SYSTEM	PSL/IO
NEXT ASSY	N/A

PART/DWG NAME			
AdvLIGO Laser Area Enclosure (LAE) Location, Corner Station Hanford (WA)			
DESIGNER	ED CHAVEZ	05 MAY 2010	SIZE DWG. NO.
DRAFTER	ED CHAVEZ	05 MAY 2010	D D1001072
CHECKER	R. SAVAGE	05 MAY 2010	
APPROVAL	D. COYNE	05 MAY 2010	SCALE: 1:768 PROJECTION:
			SHEET 1 OF 3

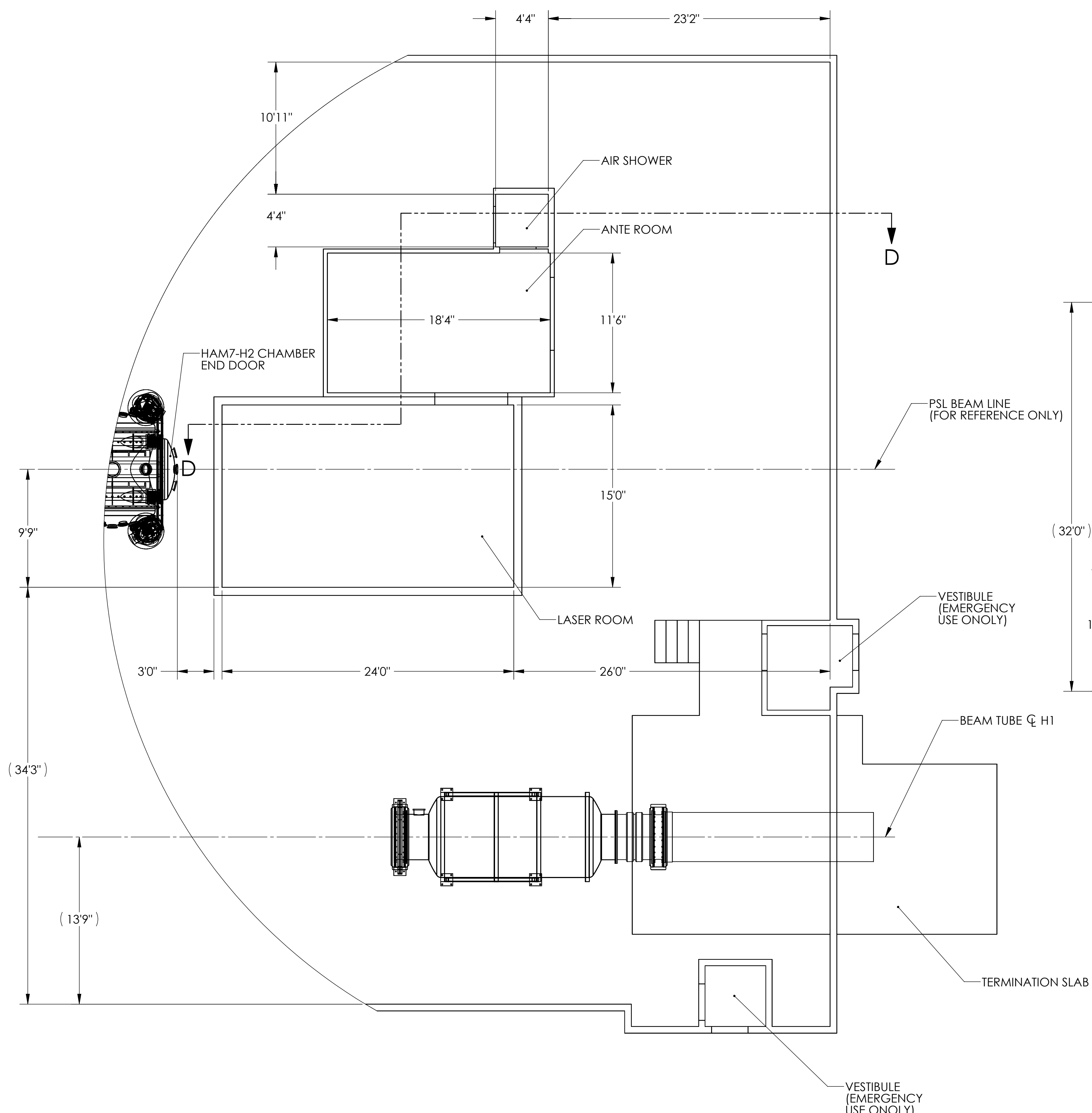
8 7 6 5 4 3 2 1



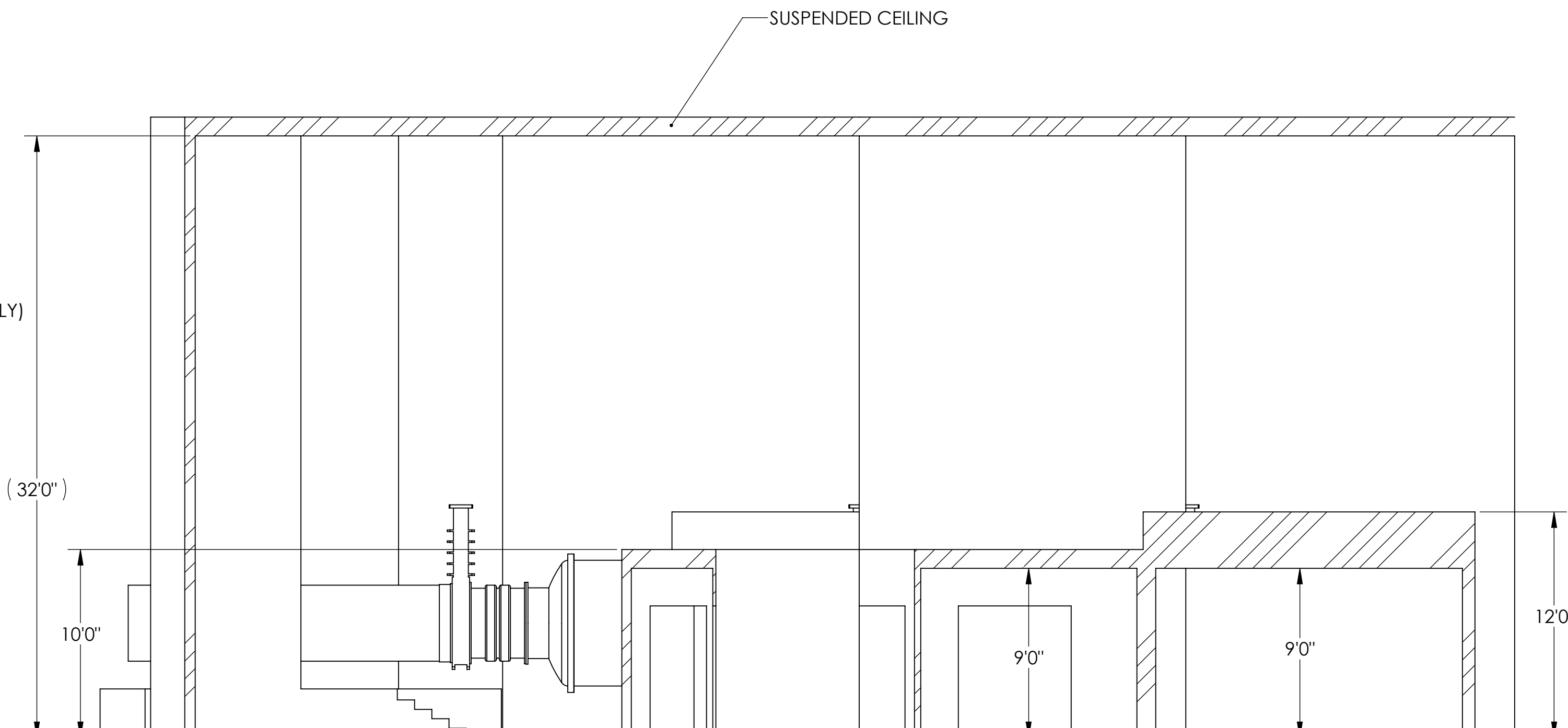
**DETAIL "A"  
PLAN VIEW  
H1 LAE**



**SECTION "C"  
ELEVATION VIEW  
H1 LAE**



**DETAIL "B"  
PLAN VIEW  
H2 LAE**



**SECTION "D"  
ELEVATION VIEW  
H2 LAE**

D:\001072\_Ask\1072 Laser Area Enclosure (LAE) Location, Corner Station Hartford (WA), PARF FDM REV. 1, DRAWINGS FDM REV. X:000