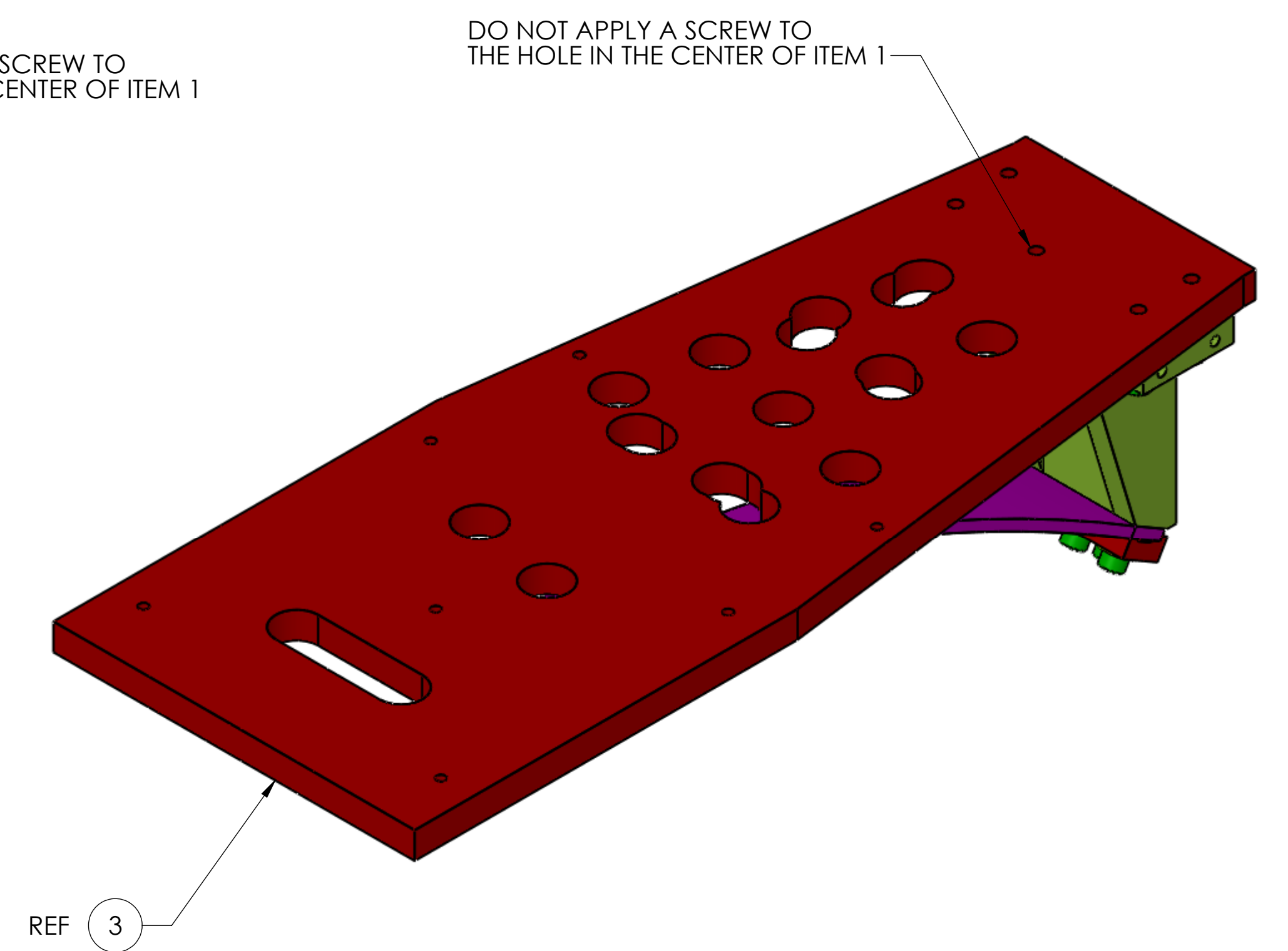
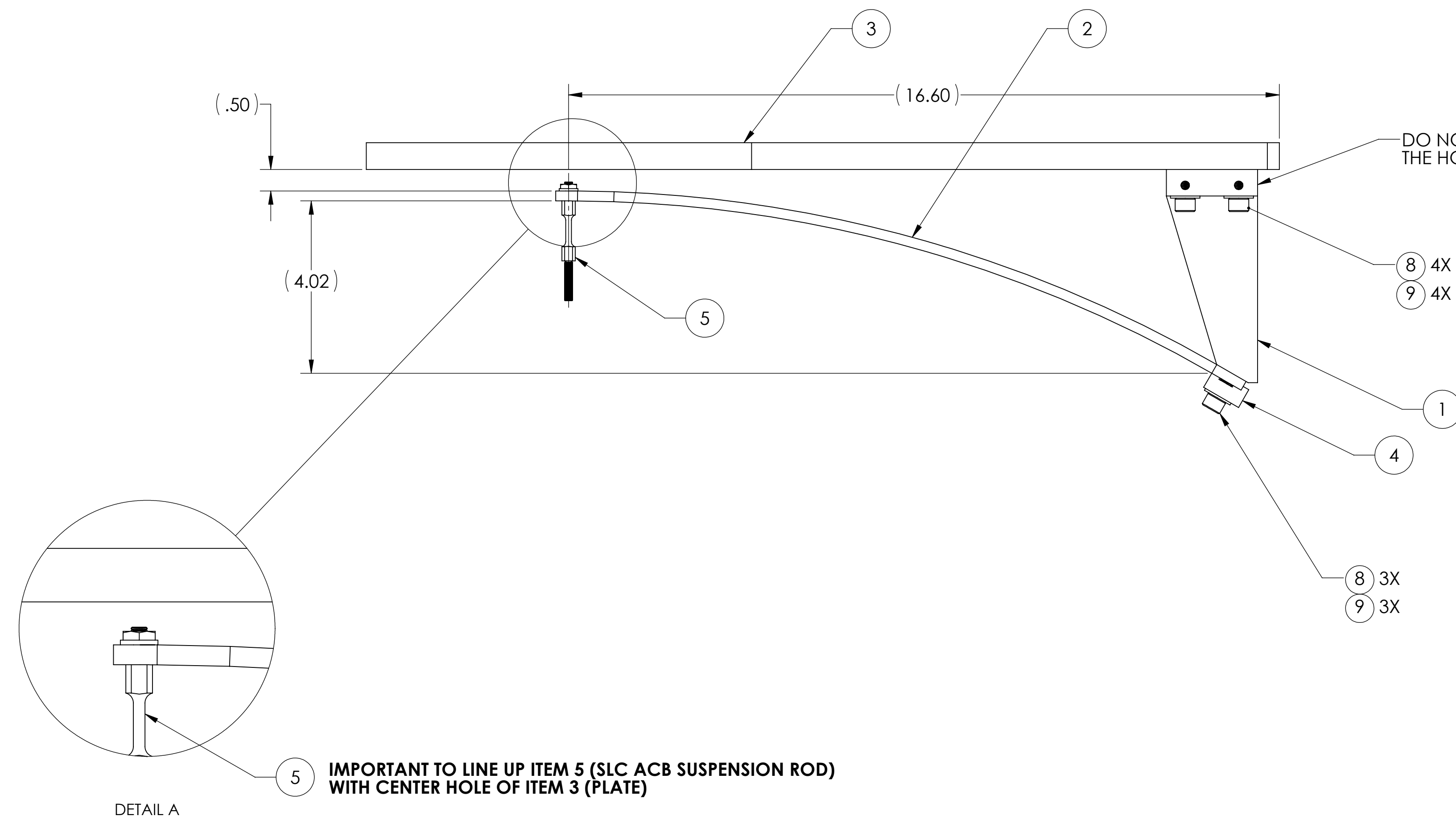
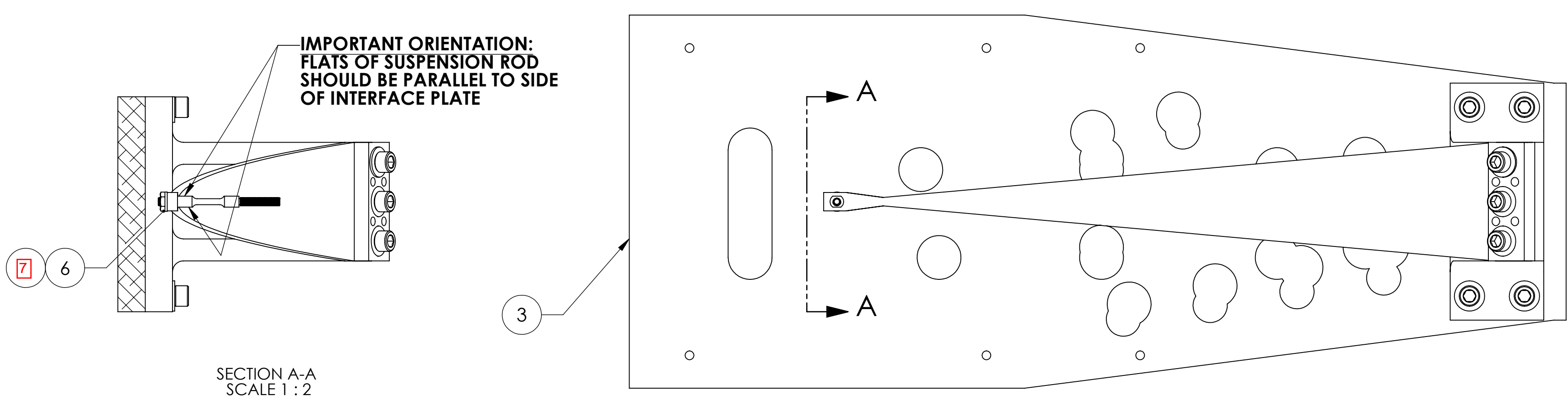


REV.	DATE	DCN #	DRAWING TREE #
v3	02 JUN 2010	E1100216	E1000640
v3	10 SEP 2011	E1100335	E1000640
v4	07 NOV. 2011	E1100335	E1000640
v5	03 JUL 2012	E1100335	E1000640
v6	03 AUG 2012	E1100335	



BSC4, BSC5, BSC9, BSC10_H1 L1
-1

**IMPORTANT ORIENTATION:
FLATS OF SUSPENSION ROD
SHOULD BE PARALLEL TO SIDE
OF INTERFACE PLATE**



SECTION A-A
SCALE 1:2

ITEM NO.	PART NUMBER	DESCRIPTION	MATERIAL	REQ	TOTAL
16	D1200920	SLC ACB INTERFACE MTG PLATE, BSC3 - H1L1	304 SSSL	1 FOR -3	1
15	D1200903	SLC ACB INTERFACE MTG PLATE, BSC1- H1L1	304 SSSL	1 FOR -2	1
14	D1101184	ALIGO ACB BEND FIXTURE PLATE	6061-T6 Al	1	1
13	C-2014-A	SCREW, SOCKET HEAD CAP, 1/4-20 UNC-2A X 0.375 LONG, FULLY THREADED	Ag-PLATED 300 SSSL	4	2
12	D1101099	ALIGO ACB BEND FIXTURE	6061-T6 Al	1	1
11	D1101298	BLADE SPRING BENDING HOOK ASSY	304 SSSL	1	1
10	92200A246	SOCKET HEAD CAP SCREW, 10-24 X .875 LG, NAS 1352C-3-14 (OR EQUIV)	300 SSSL	2	2
9	C-1820-NA	U-C COMP. 5/16-18 X 1.25L, S.H.C.S.	Ag-PLATED 300 SSSL	7	7
8	98019A385	.312 FLAT WASHER, .34 ID X .69 OD X .06 T, NASM 15795-812	300 SSSL	7	7
7	N-1024-A	HEX NUT, #10-24, AG PLATED,(OR EQUIVALENT)	Ag-PLATED 300 SSSL	1	1
6	98019A330	WASHER #10, NASM 15795-808	300 SSSL	1	1
5	D1200781	ACB SUSPENDED ROD	Maraging Steel	1	1
4	D1002844	SLC ACB BLADE CLAMP	304 SSSL	1	1
3	D1001138	SLC ACB INTERFACE MTG PLATE	304 SSSL	1 FOR -1	0
2	D1002608	SLC ACB SUSPENSION BLADE	MARAGING STEEL C250	1	1
1	D1002609	SLC BLADE MOUNTING BRACKET	304 SSSL	1	1

NOTES AND TOLERANCES: (UNLESS OTHERWISE SPECIFIED)

DIMENSIONS ARE IN INCHES
TOLERANCES:
.XX ± .03
.XXX ± .010
ANGULAR ± 0.5°

MATERIAL: N/A
FINISH: N/A μinch

ADVANCED LIGO
CALIFORNIA INSTITUTE OF TECHNOLOGY
MASSACHUSETTS INSTITUTE OF TECHNOLOGY

ARM CAVITY BAFFLE BLADE ASSY

DESIGNER: N.Nguyen
DRAFTER: TQ. NGUYEN
CHECKER: M. SMITH
APPROVAL: D. COYNE

DATE: 20 Aug 2010
DATE: 28 MAY 2010
DATE: 10 NOV 2010
DATE: 20 NOV 2010

SIZE: D
DWG. NO.: D1001005
SCALE: 1:1
PROJECTION: 1st Angle

REV. V7
SHEET 1 OF 3

D:\001_005_Adu\GO_LACS_SLC_ARM_Cavity_Baffle_Blade Assy_PART.PDM REV: X-134.DRAWING PDM REV: X-041

8

7

6

5

4

3

2

1

H

H

G

G

F

F

E

E

D

D

C

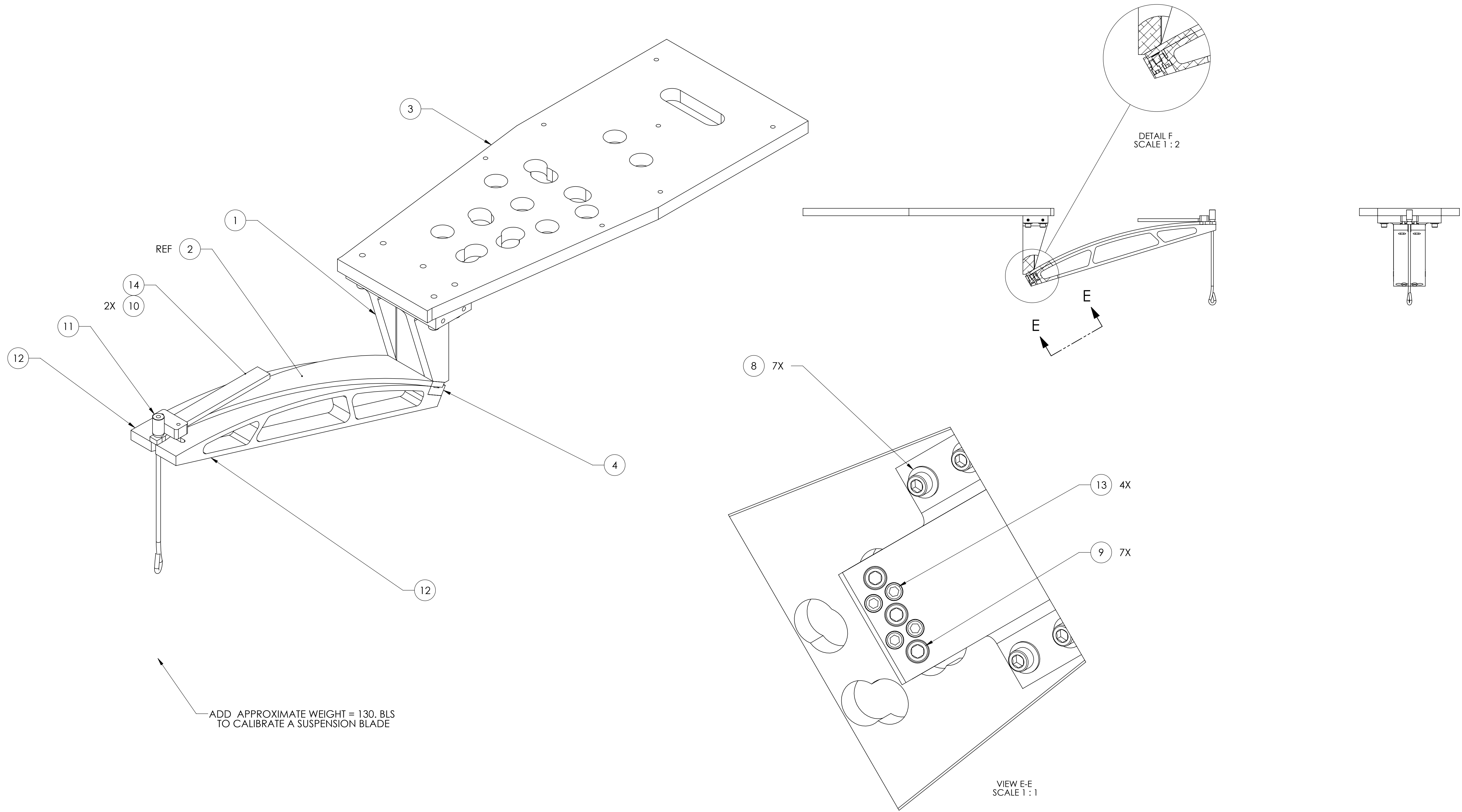
C

B

B

A

A



ADD APPROXIMATE WEIGHT = 130. BLS
TO CALIBRATE A SUSPENSION BLADE

DETAIL F
SCALE 1 : 2

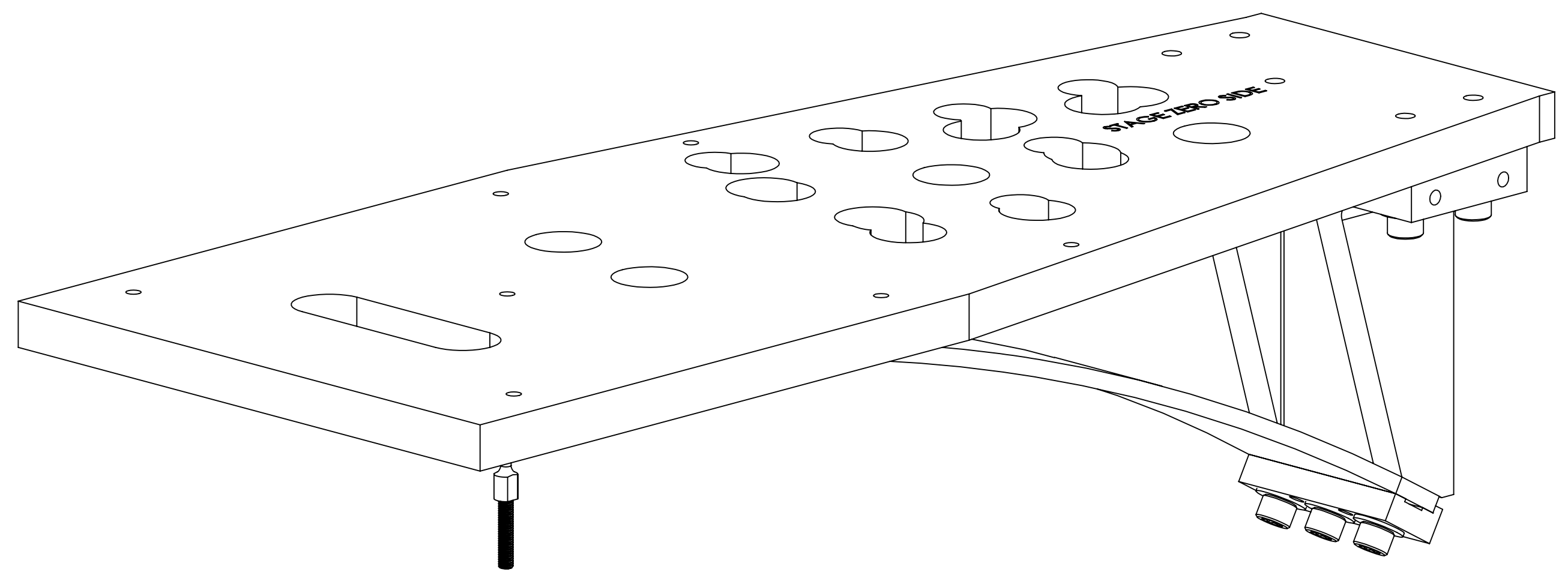
VIEW E-E
SCALE 1 : 1

		CALIFORNIA INSTITUTE OF TECHNOLOGY MASSACHUSETTS INSTITUTE OF TECHNOLOGY	
SIZE	DWG. NO.	REV.	
D	D1001005	V7	
SCALE: 1:4	PROJECTION:	SHEET 2 OF 3	

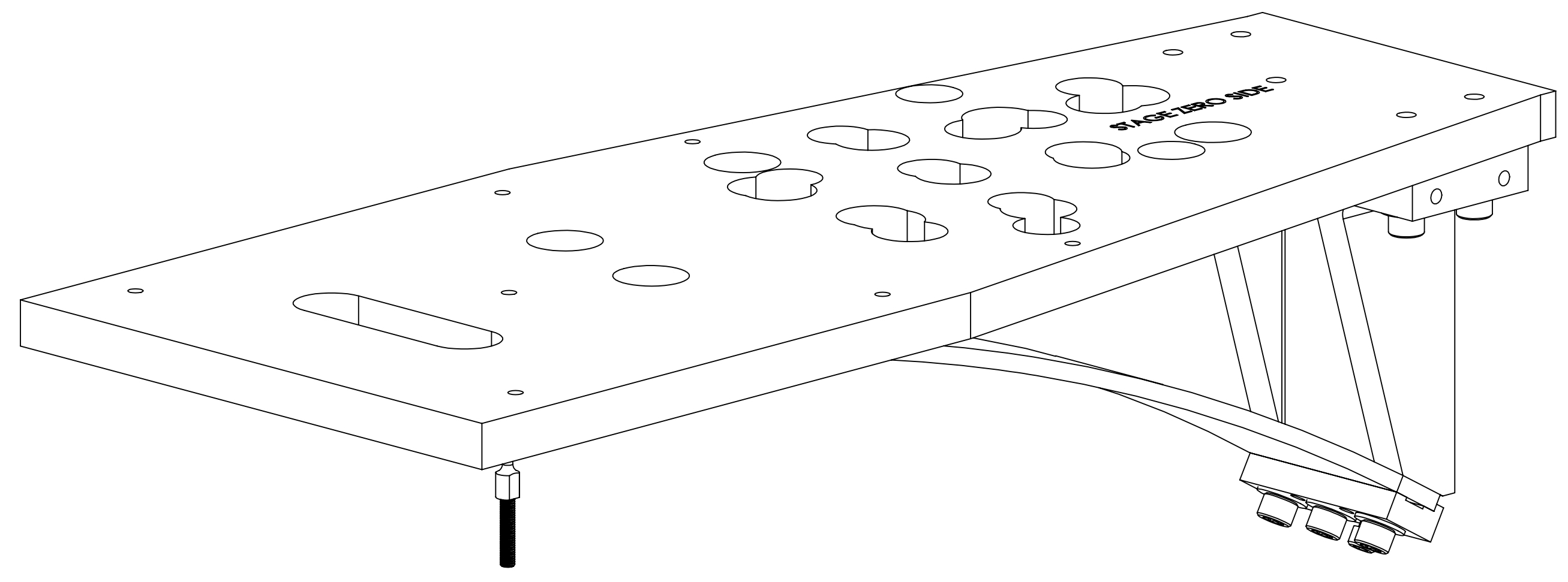
D1001005_AduIGO_AOS_SLC_ARM_Cavity_Baffle_Blade Assy. PART PDM REV: X-134 DRAWING PDM REV: X-041

8 7 6 5 4 3 2 1

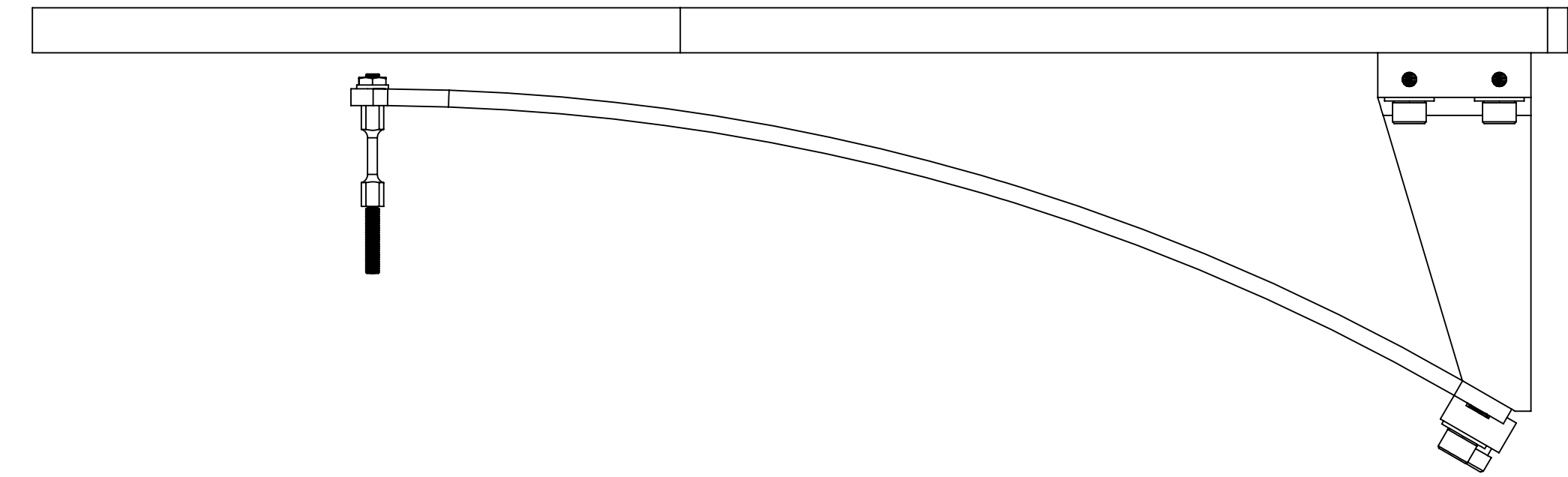
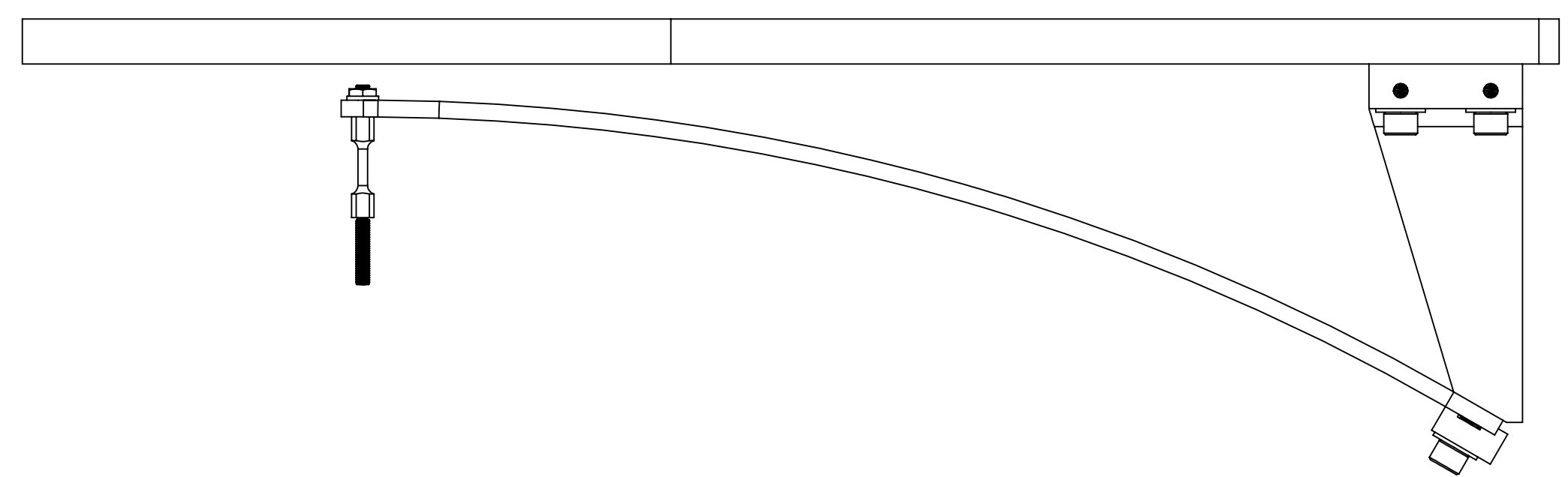
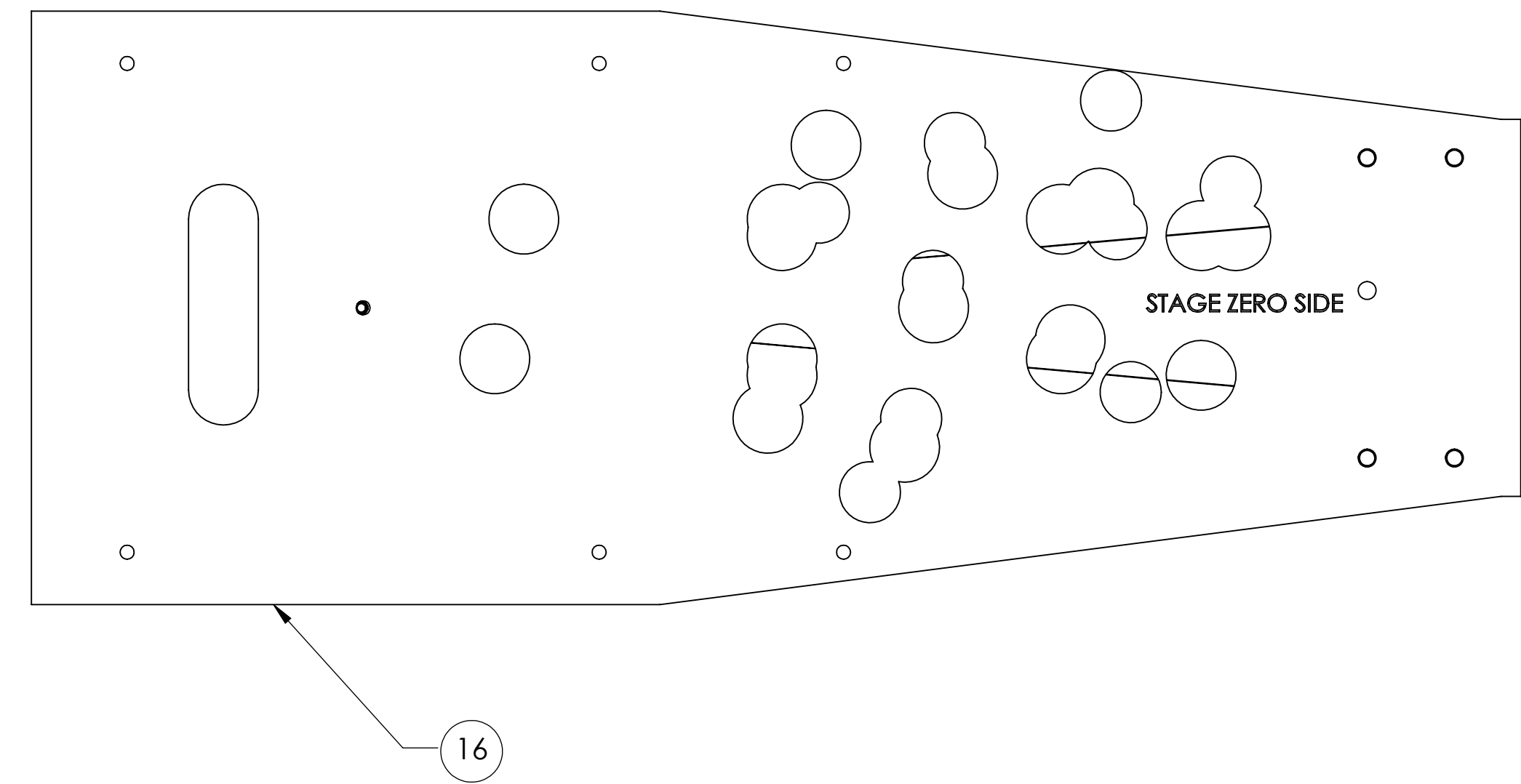
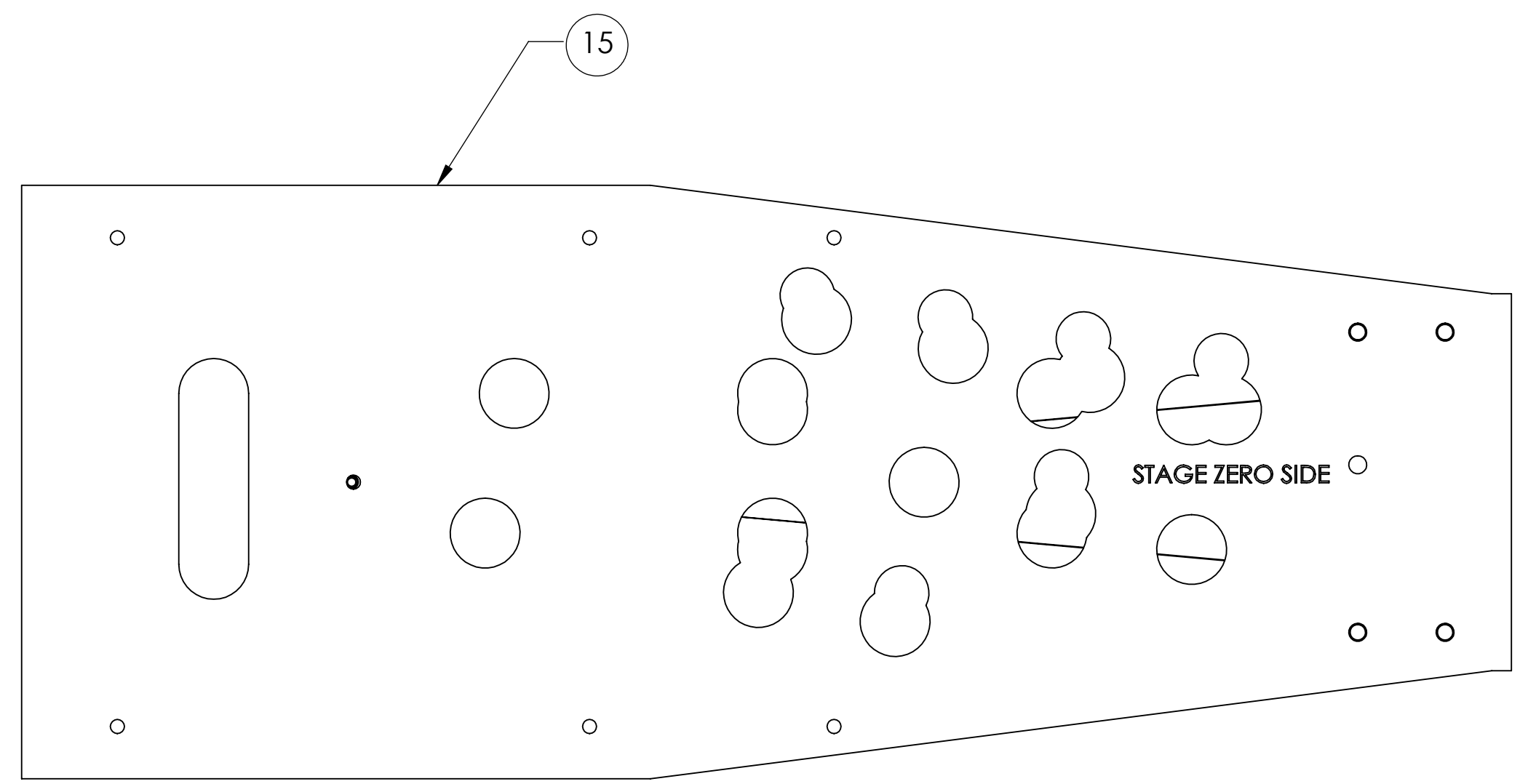
H
G
F
E
D
C
B
A



**BSC1- H1 L1
-2**



**BSC3- H1 L1
-3**



LIGO CALIFORNIA INSTITUTE OF TECHNOLOGY
MASSACHUSETTS INSTITUTE OF TECHNOLOGY

SIZE	DWG. NO.	REV.
D	D1001005	V7
SCALE: 1:2	PROJECTION:	SHEET 3 OF 3

8 7 6 5 4 3 2 1

D:\001005_AduLIGO_ACS_SLC_ARM_Cavity_Baffle_Blocks Assy. PART PDM REV. X-134 DRAWING PDM REV. X-041