

**NOTES: UNLESS OTHERWISE SPECIFIED**

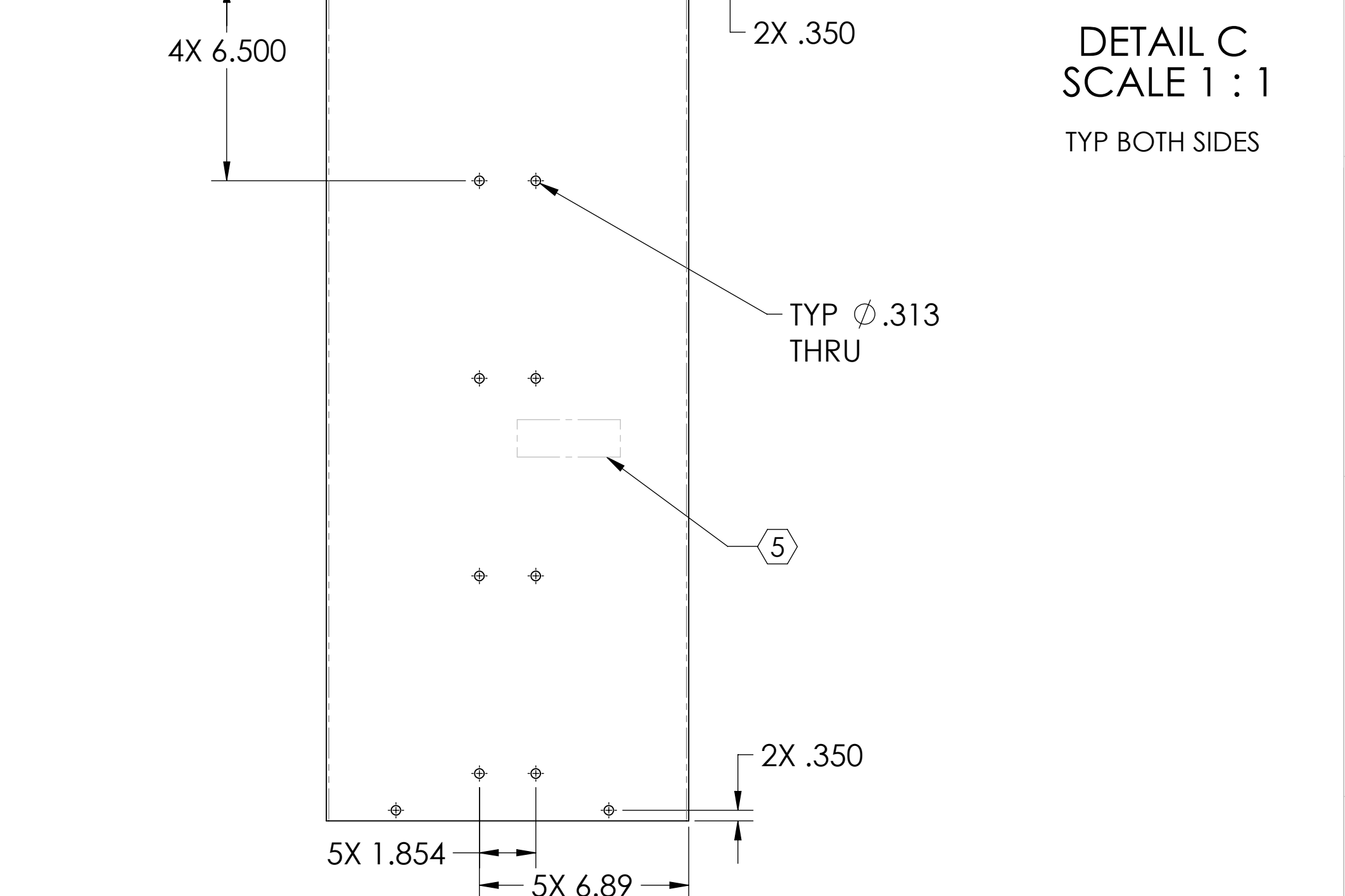
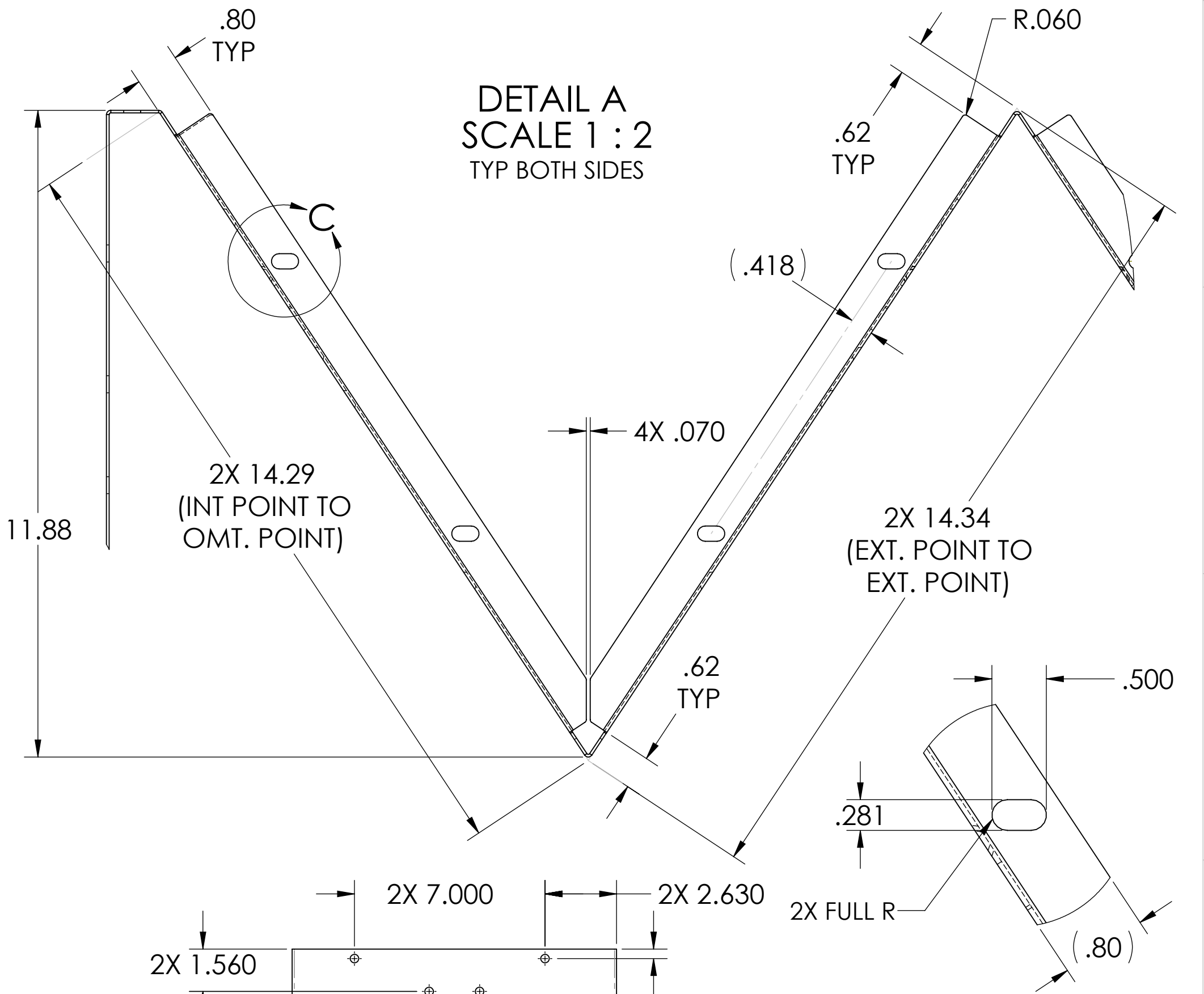
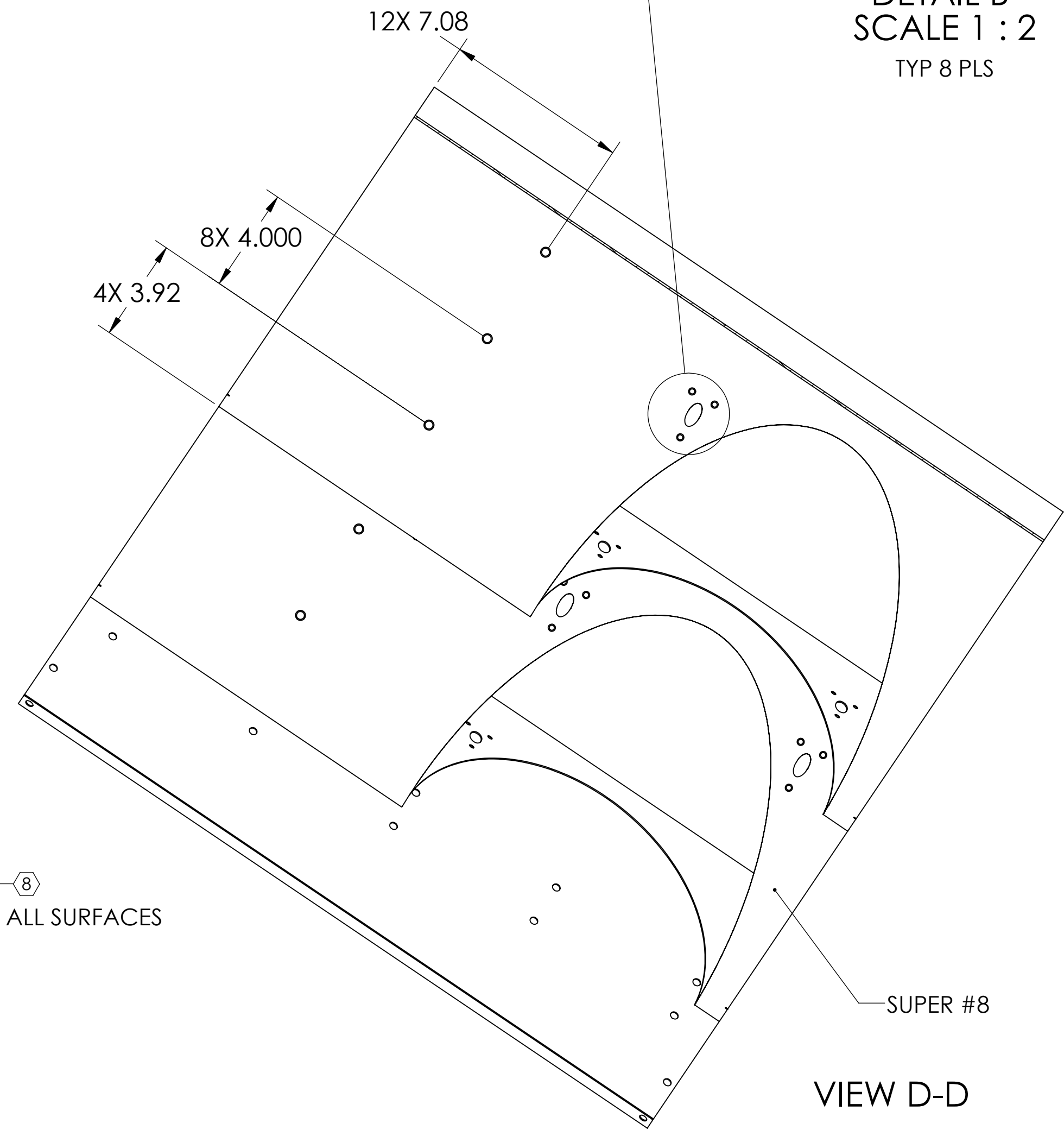
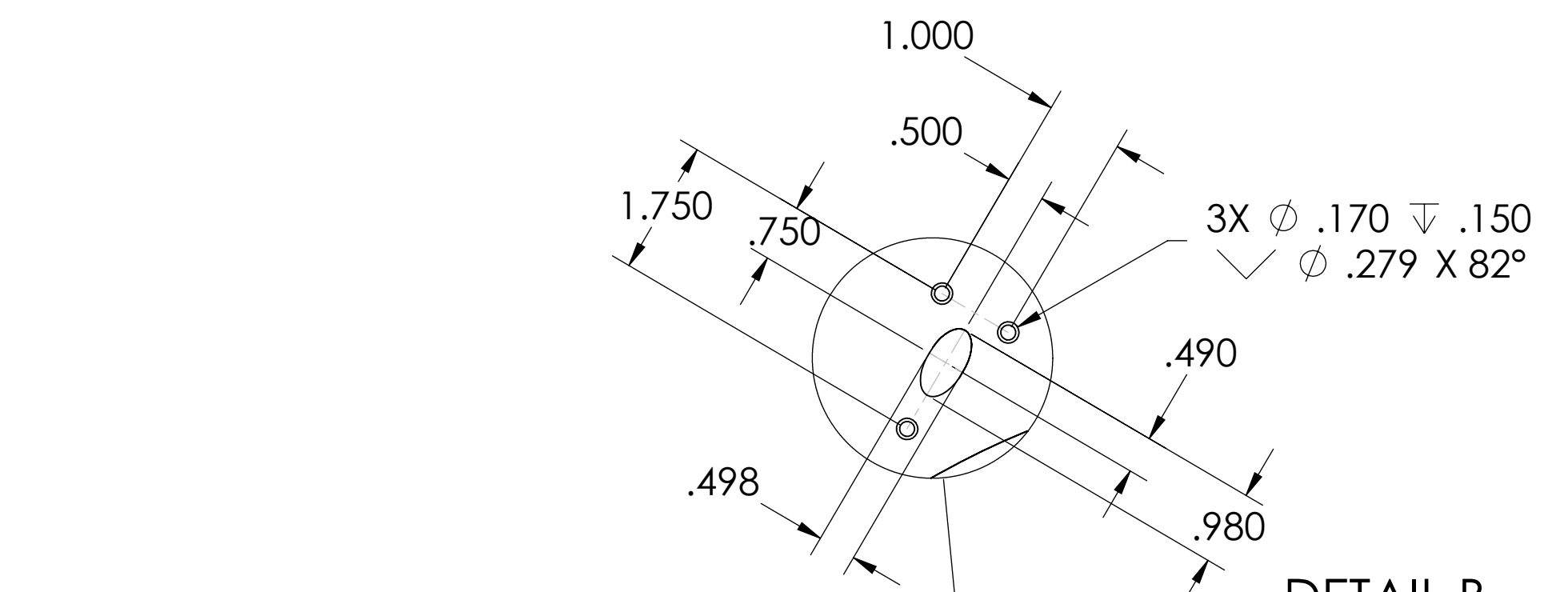
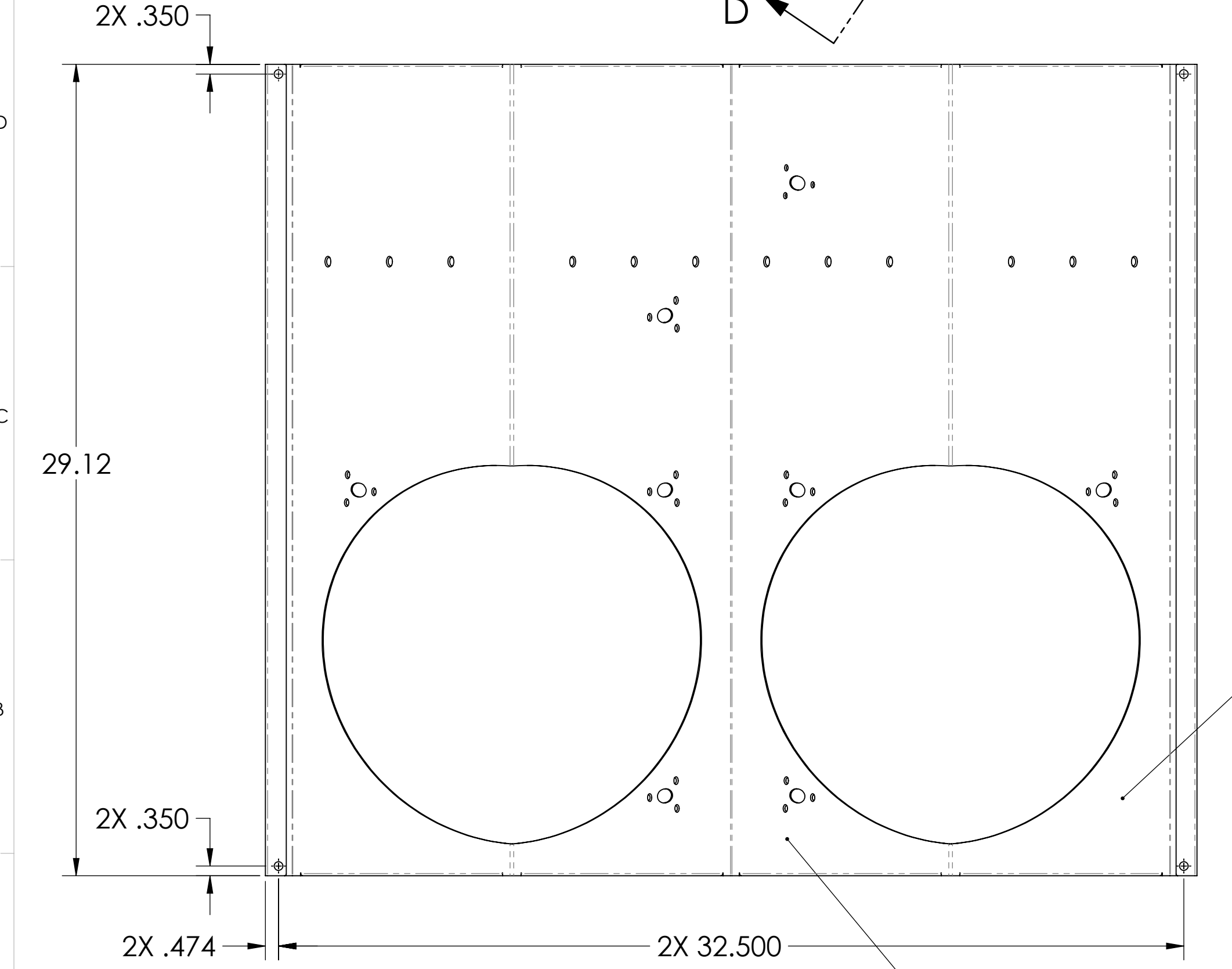
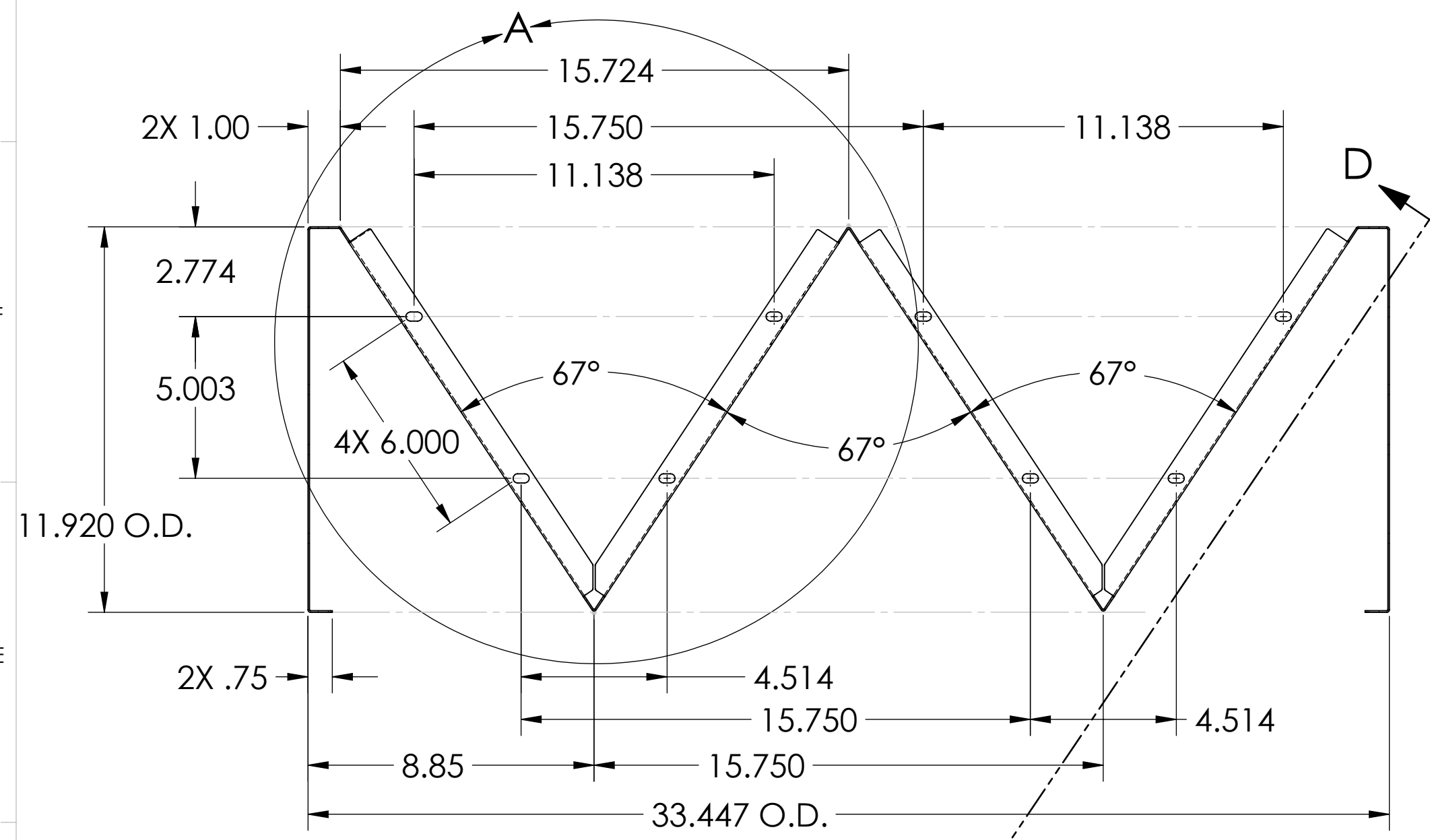
- 1. INTERPRET DRAWING PER ASME Y14.5-1994.
- 2. REMOVE ALL SHARP EDGES. .005-.015 ON ALL EDGES AND HOLES.
- 3. DO NOT SCALE FROM DRAWING.
- 4. ALL MACHINE FLUIDS MUST BE FULLY SYNTHETIC, FULL WATER SOLUBLE AND FREE OF SULFUR, SILICONE AND CHLORINE PER LIGO DOCUMENT E0900237.

- 6. PART SHALL BE MANUFACTURED IN ACCORDANCE WITH LIGO SPEC E0900364.
- 7. ALL MATERIAL IS TO BE VIRGIN MATERIAL (I.E. NO WELD REPAIRS OR PLUGS) UNLESS APPROVED IN ADVANCE, IN WRITING, BY LIGO PER SPECIFICATION E0900364.
- 8. SURFACE FINISH TO BE AS-PROCESSED FROM MILL/SUPPLIER, FREE FROM SCRATCHES OR GOUGES.

5 MECHANICALLY STAMP (NO INKS OR DYES) PART NUMBER, REVISION AND SERIAL NUMBER .020 DEEP WITH MINIMUM CHARACTER HEIGHT .156 APPROXIMATELY WHERE SHOWN. SERIAL NUMBER WILL START AT 001 AND PROCEED CONSECUTIVELY.  
EXAMPLE: D100XXXX=V1  
S/N 001

12 SEE CAD FILE # D1000973.SLDPRT TO GENERATE ELLIPSE CURVES.  
DELETED NOTES 9, 10, 11 AND 13

| REV. | DATE         | DCN #    | DRAWING TREE # |
|------|--------------|----------|----------------|
| v1   | 02 JUL 2010  | E1000285 |                |
| v2   | 11 MAR 2011  | E1100216 |                |
| v3   | 20 MAY 2011  | E1100335 |                |
| v4   | 27 MAY 2011  | E1100335 |                |
| v5   | 25 JUN 2011  | E1100335 |                |
| v6   | 07 SEPT 2011 | E1100335 |                |
| v7   | 13 Oct. 2011 | E1100335 |                |

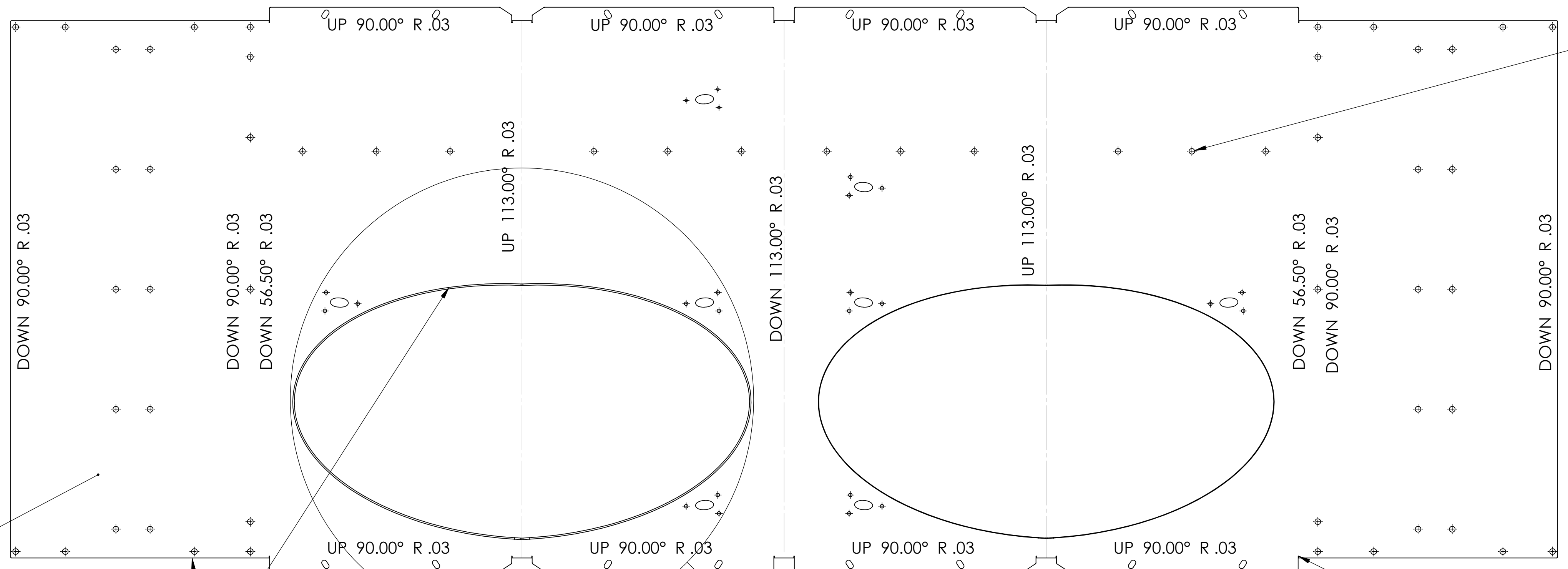


| DIMENSIONS ARE IN INCHES  |  | TOLERANCES:<br>.XX ± .03<br>.XXX ± .015 |  | ANGULAR ± 1.0° |  | MATERIAL<br>18 GAUGE, 304 SSTL |  | FINISH<br>SUPER #8 |  | NEXT ASSY<br>D1000977 |  | PART NAME<br>ARM CAVITY BAFFLE SKIN |  | DESIGNER<br>N.Nguyen |  | DRAFTER<br>TQ. NGUYEN |  | CHECKER<br>M. SMITH |  | APPROVAL<br>D. COYNE |  | SIZE<br>D |  | DWG. NO.<br>D1000973 |  | REV.<br>v7 |  |  |  |  |  |  |  |  |  |
|---|--|---|--|----------------|--|--------------------------------|--|--------------------|--|-----------------------|--|-------------------------------------|--|----------------------|--|-----------------------|--|---------------------|--|----------------------|--|-----------|--|----------------------|--|------------|--|--|--|--|--|--|--|--|--|
| NOTES AND TOLERANCES: (UNLESS OTHERWISE SPECIFIED)                          |  |   |  |                |  |                                |  |                    |  |                       |  | SEE TOP LEFT FOR NOTES              |  |                      |  |                       |  |                     |  |                      |  |           |  |                      |  |            |  |  |  |  |  |  |  |  |  |
| CALIFORNIA INSTITUTE OF TECHNOLOGY<br>MASSACHUSETTS INSTITUTE OF TECHNOLOGY |  |   |  |                |  |                                |  |                    |  |                       |  | ADVANCED LIGO                       |  |                      |  |                       |  |                     |  |                      |  |           |  | AOS                  |  |            |  |  |  |  |  |  |  |  |  |
| SCALE: 1:4  |  |   |  |                |  |                                |  |                    |  |                       |  | PROJECTION:                         |  |                      |  |                       |  |                     |  |                      |  |           |  | SHEET 1 OF 3         |  |            |  |  |  |  |  |  |  |  |  |

D1000973\_AduLIGO\_AOS\_SLC\_ARM\_Cavity\_Baffle\_Skin\_PART\_PDM\_REV.X-073\_DRAWING\_PDM\_REV.X-073

8 7 6 5 4 3 2 1

H  
G  
F  
E  
D  
C  
B  
A

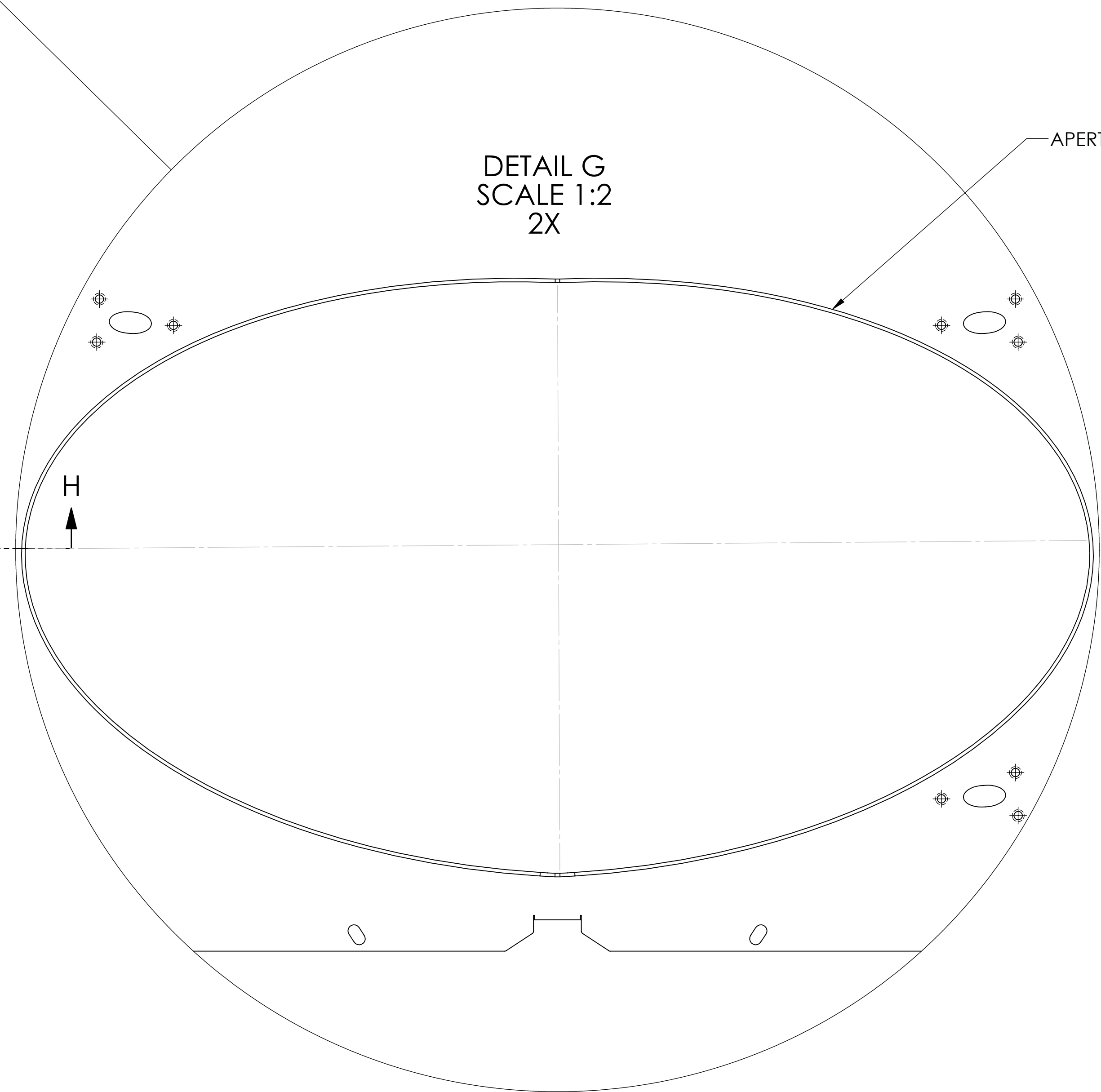


12X  $\varnothing$  .221 THRU  
 $\varnothing$  .385 X 82°

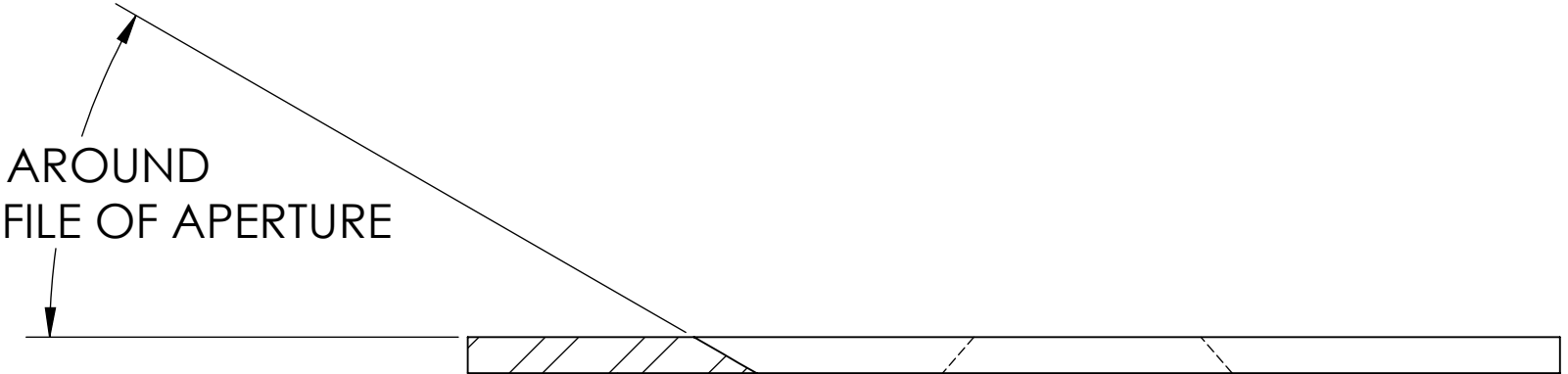
**SUPER #8  
FARSIDE**

ALL EDGES TO BE SMOOTH AND  
FREE OF BURRS

BEND RELIEF OPTIONAL



30° AROUND  
ENTIRE PROFILE OF APERTURE



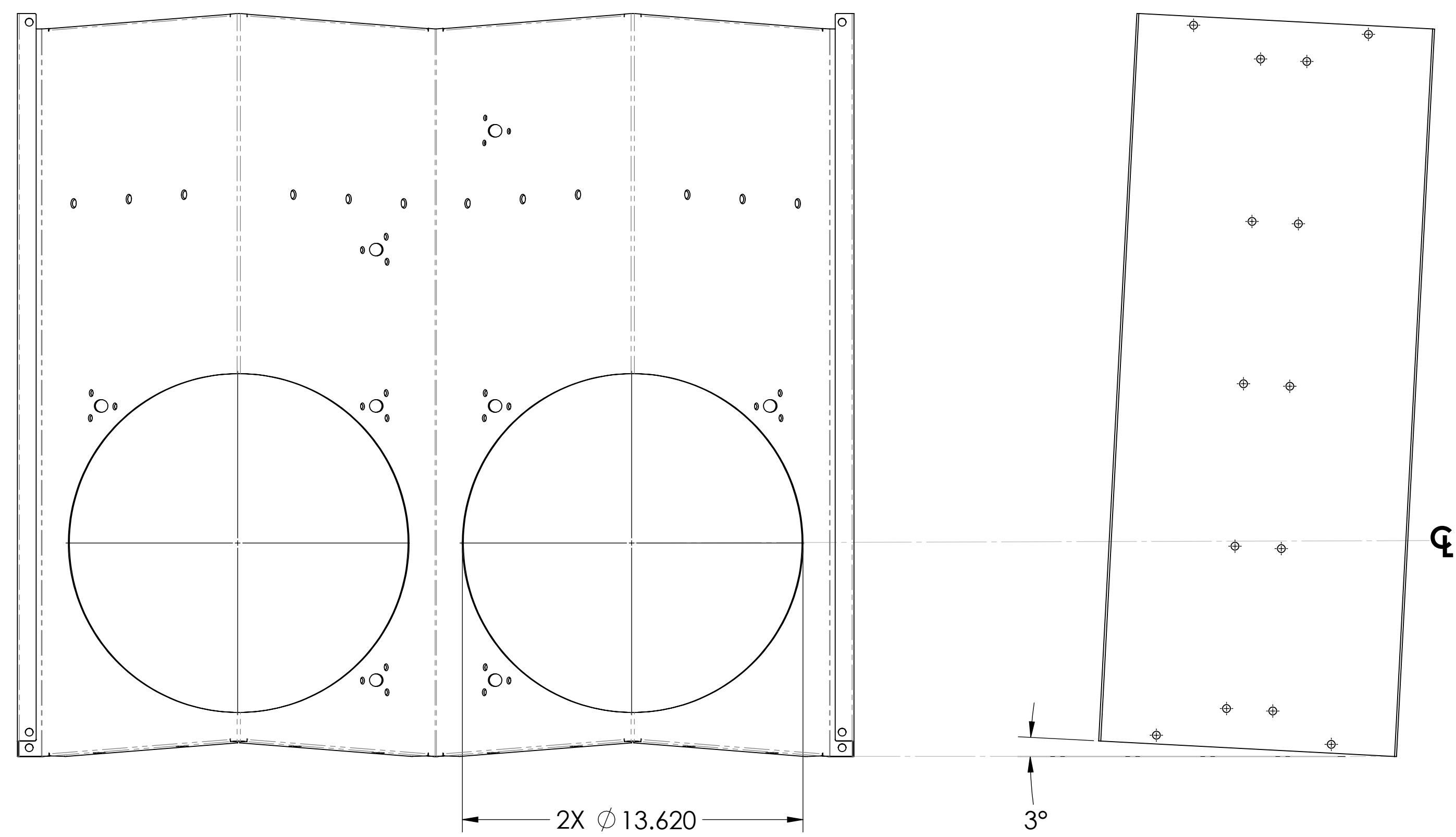
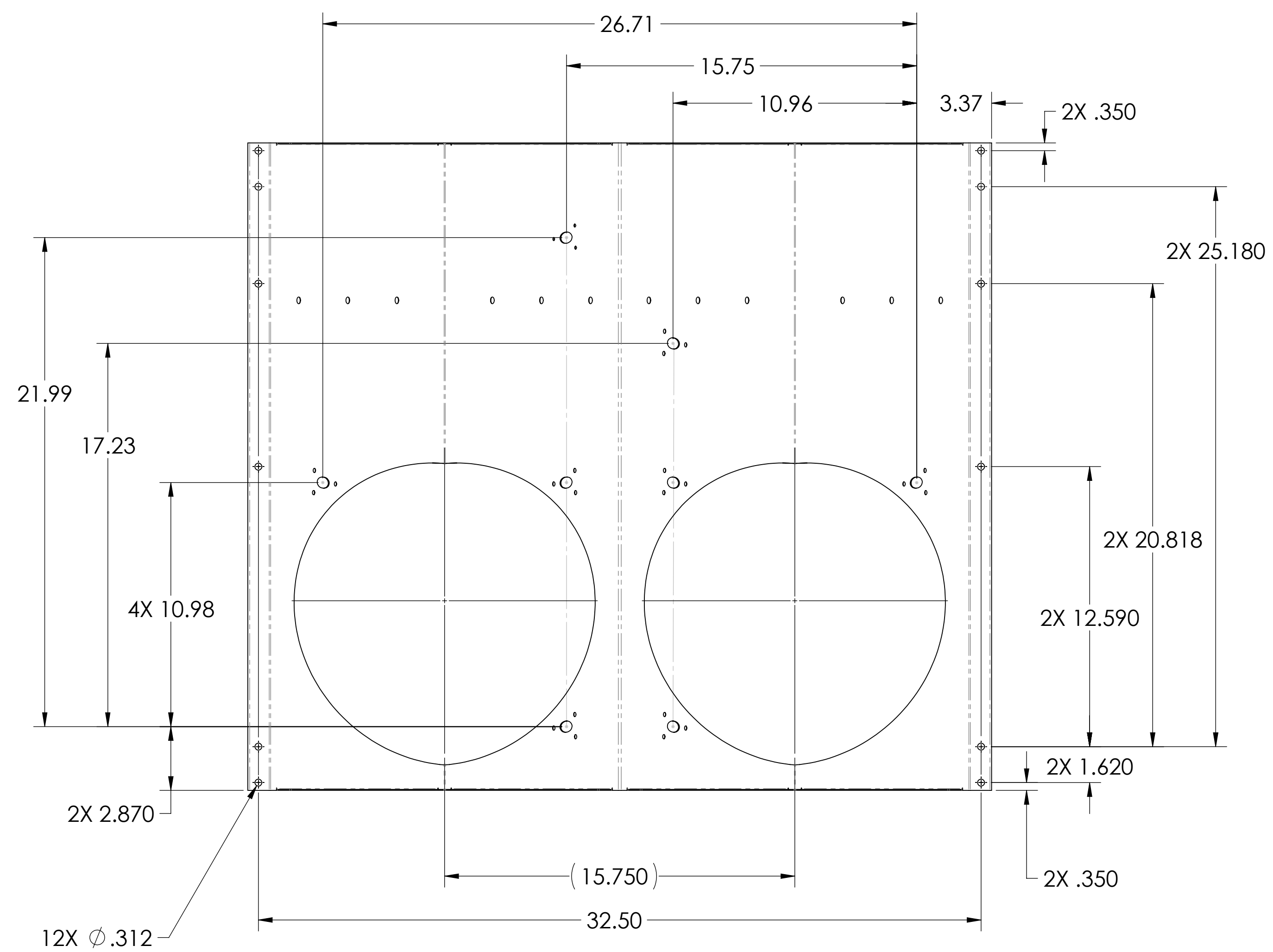
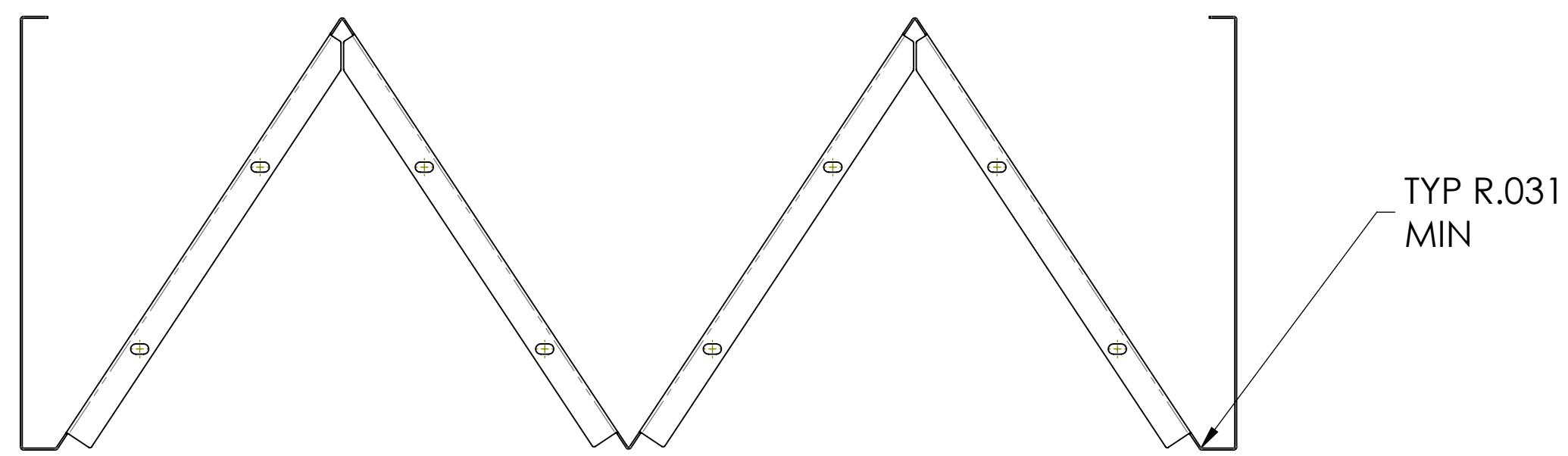
**SUPER #8**

SECTION H-H  
SCALE 4 : 1  
2X

|   |                           |
|---|---------------------------|
| <b>LIGO</b> CALIFORNIA INSTITUTE OF TECHNOLOGY<br>MASSACHUSETTS INSTITUTE OF TECHNOLOGY |                           |
| SIZE DWG. NO.   | REV.                      |
| D D1000973  | v7                        |
| SCALE: 1:4  | PROJECTION:  SHEET 2 OF 3 |

8 7 6 5 4 3 2 1

D:\000973\_Adu\GO\_ACS\_SLC\_ARM\_Covily\_Bottle\_Sign\_PART\_PDM\_REV.X-073\_DRAWING\_PDM\_REV.X-073



**3° TILT**

|   |             |              |
|---|-------------|--------------|
| CALIFORNIA INSTITUTE OF TECHNOLOGY<br>MASSACHUSETTS INSTITUTE OF TECHNOLOGY |             |              |
| SIZE  | DWG. NO.    | REV.         |
| D   | D1000973    | v7           |
| SCALE: 1:4  | PROJECTION: | SHEET 3 OF 3 |

D1000973\_AduLIGO\_ACS\_SLC\_ARM\_Cavity\_Baffle\_Sign\_PART\_FDM\_REV\_X-073\_DRAWING\_FDM\_REV\_X-073