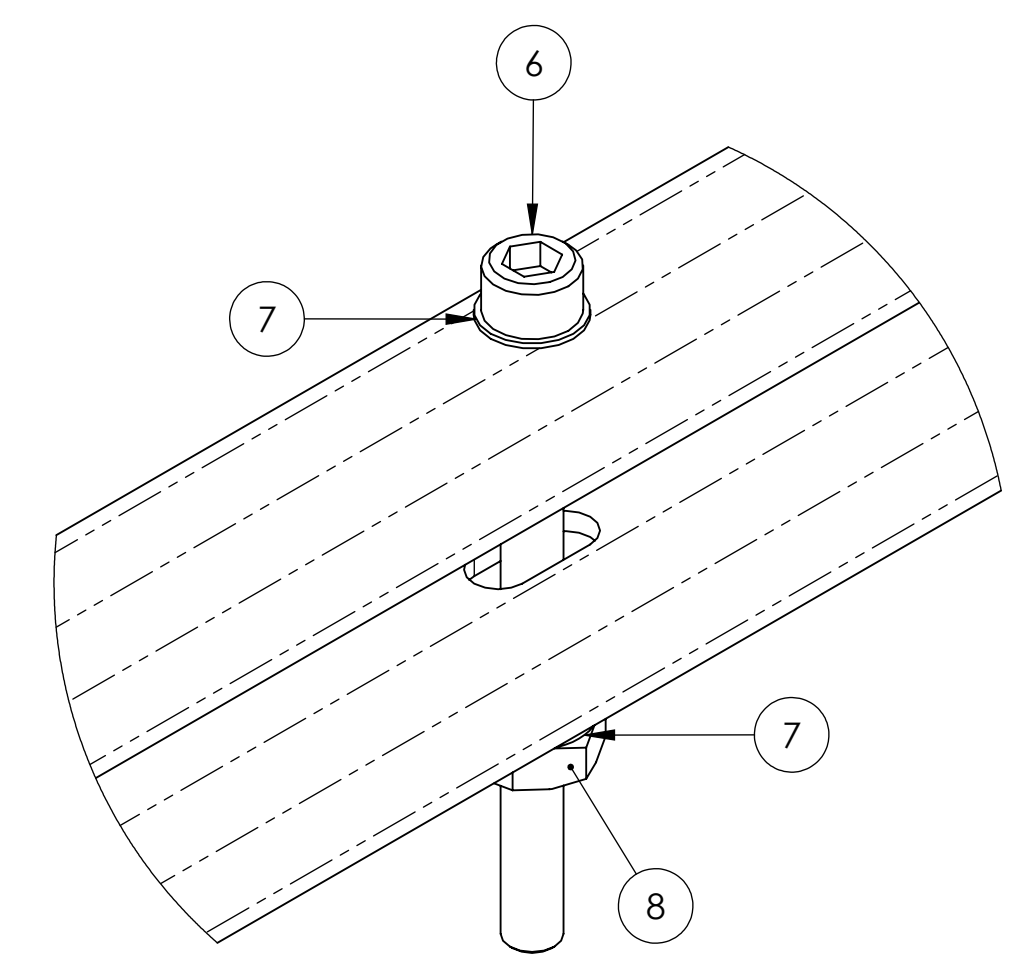
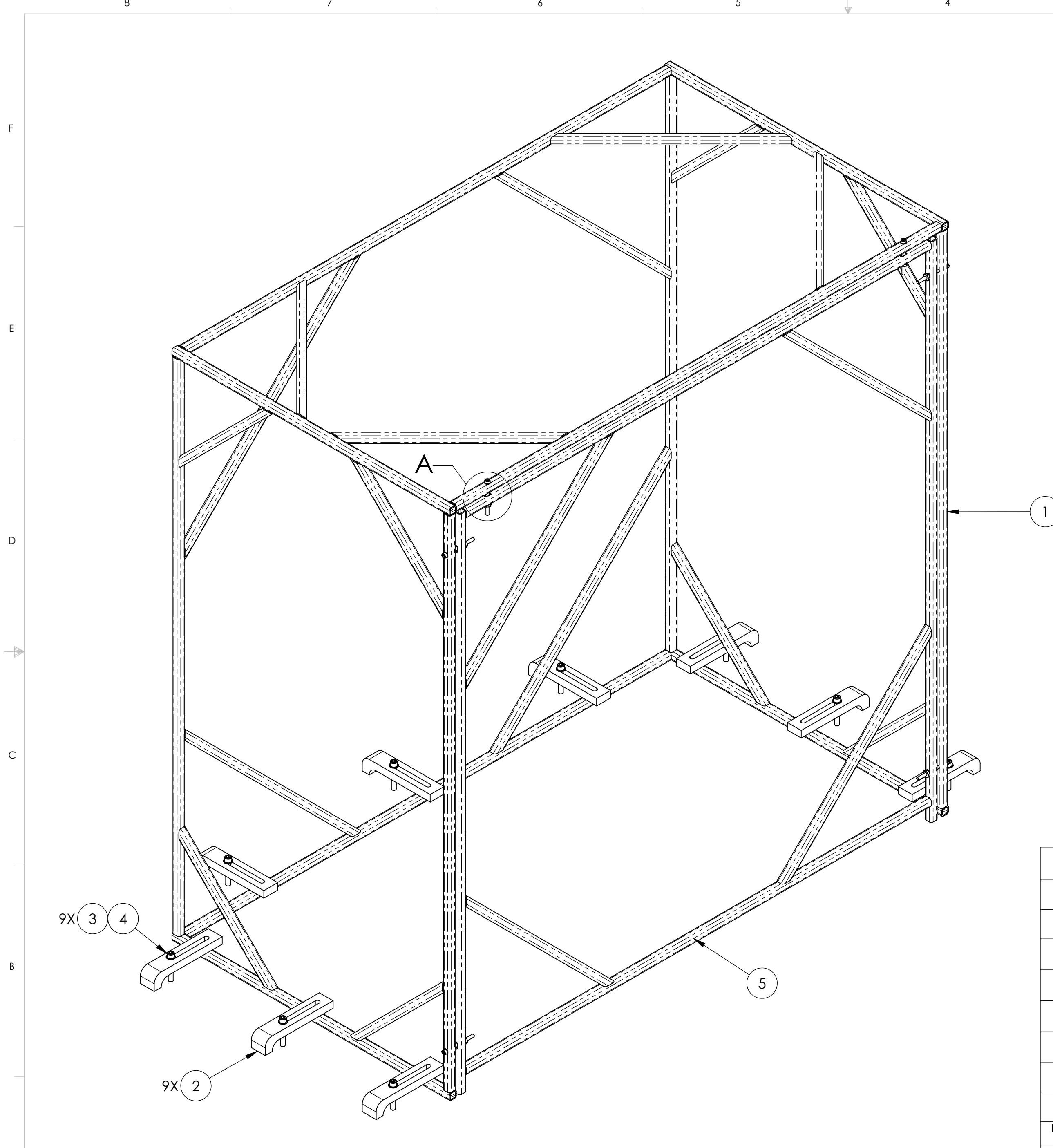


REV.	DATE	DCN #	DRAWING TREE #
v1	07 MAY 2010	E1000153	-
-	-	-	-
-	-	-	-



DETAIL A  
SCALE 2:1  
6X

ITEM NO.	PART NUMBER	DESCRIPTION	MATERIAL	REQ	SPARE	TOTAL
9	D1001133	HAM SUS. TESTING COVER	BURLINGTON C3 FABRIC OR EQUIVALENT	1	0	1
8	-	HEX NUT, #8-32	300 SSSL	6	1	7
7	-	WASHER, FLAT, #8 (NAS 620-C8L OR EQUIVALENT)	300 SSSL	12	2	14
6	-	SCREW, SOCKET HEAD CAP, #8-32 UNC-2A X 2 LONG, FULLY THREADED	300 SSSL	6	1	7
5	D1001085	HAM SUS. TESTING COVER DOOR WELDMENT	6063 AI	1	0	1
4	-	SCREW, SOCKET HEAD CAP, 1/4-20 UNC-2A X 1.5 LONG	300 SSSL	9	2	11
3	-	WASHER, FLAT, 1/4 (NAS 620-C416L OR EQUIVALENT)	300 SSSL	9	2	11
2	D980184	LOS CLAMP, LONG	304, 316 OR 302 SSSL	9	1	10
1	D1000961	HAM SUS. TESTING COVER WELDMENT	6063 AI	1	0	1

NOTES AND TOLERANCES: (UNLESS OTHERWISE SPECIFIED)

MATERIAL	N/A
FINISH	N/A μinch

**LIGO** CALIFORNIA INSTITUTE OF TECHNOLOGY  
MASSACHUSETTS INSTITUTE OF TECHNOLOGY

SYSTEM: ADVANCED LIGO      SUB-SYSTEM: SUS

NEXT ASSY: N/A

PART NAME: **HAM SUS. TESTING COVER ASSY**

DESIGNER: D. BRIDGES	DATE: 06 MAY 2010	SIZE: c	DWG. NO.: <b>D1000960</b>	REV.: v1
DRAFTER: D. BRIDGES	DATE: 06 MAY 2010	SCALE: 1:4		SHEET 1 OF 1
CHECKER: M. MEYER	DATE: 10 MAY 2010	PROJECTION:		