

NOTES CONTINUED:

⑤ SCRIBE, ENGRAVE (A VIBRATORY TOOL MAY BE USED), LASER MARK OR MECHANICALLY STAMP (NO INKS OR DYES) DRAWING PART NUMBER, REVISION (AND VARIANT OR 'TYPE' IF APPLICABLE) ON NOTED SURFACE OF PART FOLLOWED ON THE NEXT LINE WITH A THREE DIGIT SERIAL NUMBER. SERIAL NUMBERS START AT 001 FOR THE FIRST ARTICLE AND PROCEED CONSECUTIVELY. USE MINIMUM 0.12" HIGH CHARACTERS, UNLESS THE SIZE OF THE PART DICTATES SMALLER CHARACTERS. EXAMPLE: DXXXXXX-VY, TYPE-XX, S/N XXX DO NOT APPLY MARK ON SUPER #8 SIDE.

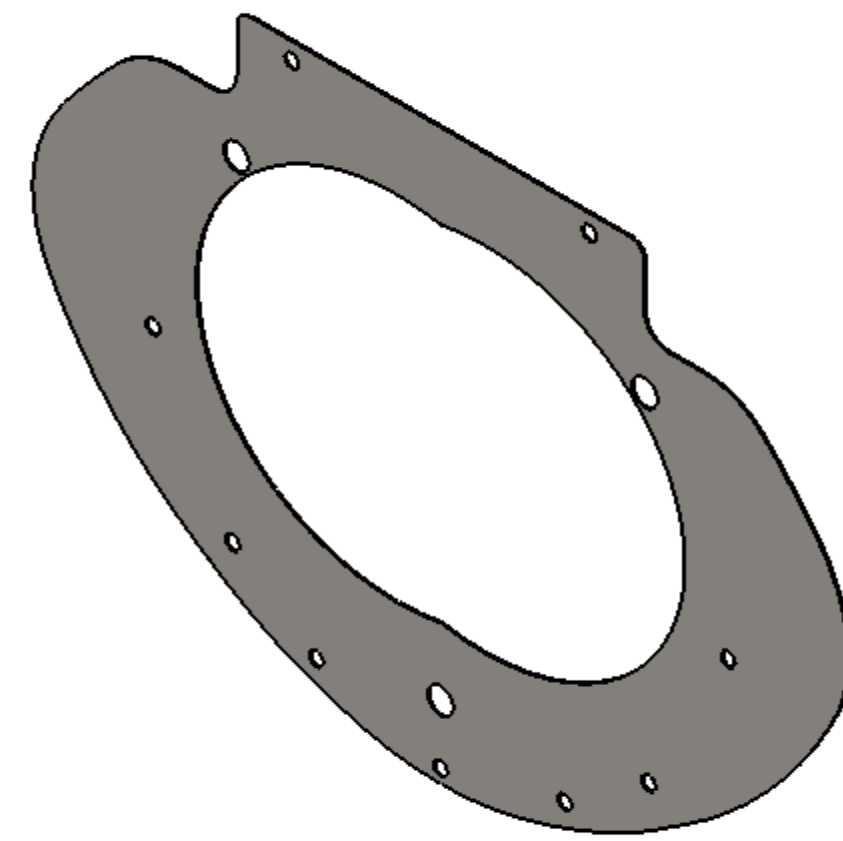
6. APPROXIMATE WEIGHT = 2.69 LB.

7. ALL PARTS SHALL BE MANUFACTURED IN ACCORDANCE WITH LIGO SPECIFICATION E0900364 AND E1100842.

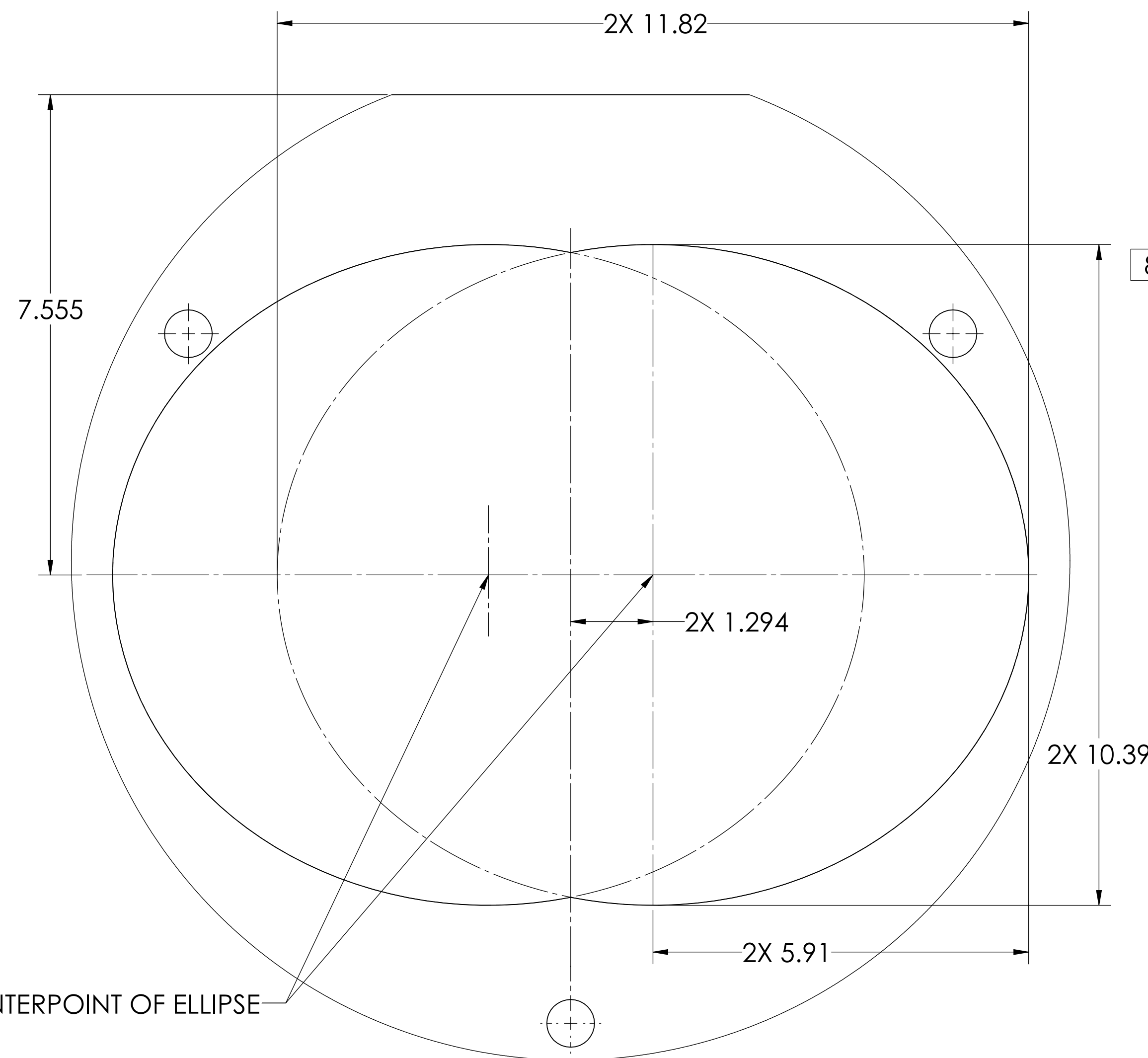
8. ALL MATERIAL IS TO BE VIRGIN MATERIAL (i.e. NO WELD REPAIRS, PLUGS OR RECYCLED MATERIAL), NO REPAIRS SHALL BE MADE UNLESS APPROVED IN ADVANCE, AND IN WRITING, BY LIGO LABORATORY. REFER TO LIGO-E0900364.

⑨ SURFACE FINISH TO BE AS-PROCESSED FROM MILL/SUPPLIER, FREE FROM SCRATCHES OR GOUGES

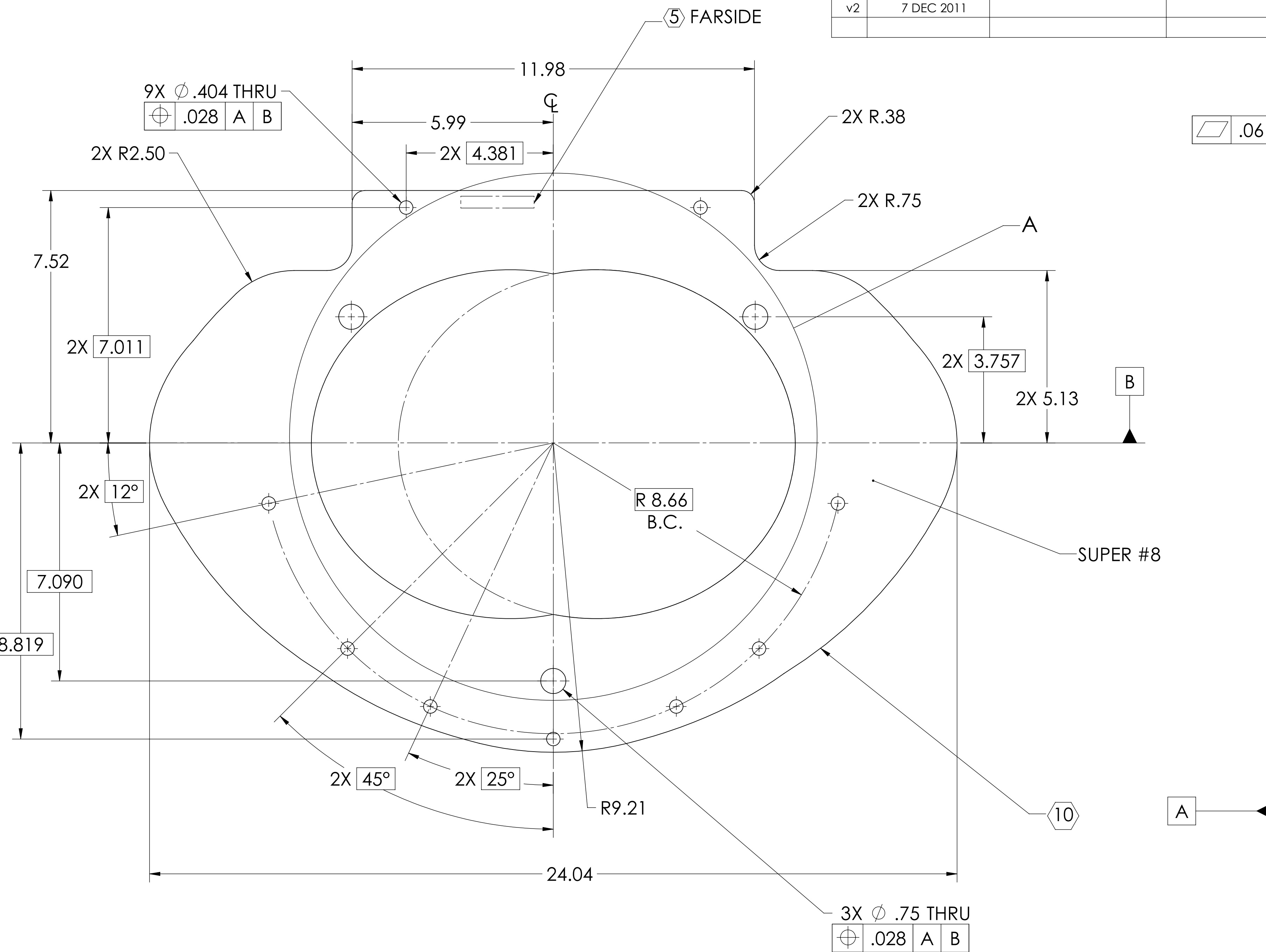
⑩ CAD FILE D1000883 MUST USED TO GENERATE ELLIPSE CURVES.



GENERAL VIEW FOR REFERENCE ONLY NO SCALE



DETAIL A SCALE 1 : 1.5



REV.	DATE	DCN #	DRAWING TREE #
v1	20 SEP 2010	E1000406	-
v2	7 DEC 2011		

NOTES AND TOLERANCES: (UNLESS OTHERWISE SPECIFIED)				LIGO CALIFORNIA INSTITUTE OF TECHNOLOGY MASSACHUSETTS INSTITUTE OF TECHNOLOGY		PART NAME	
DIMENSIONS ARE IN INCHES TOLERANCES: .XX ± .02 .XXX ± .005 ANGULAR ± 0.5°				1. INTERPRET DRAWING PER ASME Y14.5-1994. 2. REMOVE ALL SHARP EDGES, .005-.015, FOR MACHINED PARTS. ROUND ALL EDGES APPROXIMATELY R.02 FOR SHEET METAL PARTS. 3. DO NOT SCALE FROM DRAWING. 4. ALL MACHINING FLUIDS MUST BE FULLY SYNTHETIC, FULLY WATER SOLUBLE AND FREE OF SULFUR, SILICONE, AND CHLORINE.		SLC FM ELLIPTICAL BAFFLE PLATE	
MATERIAL 18 GAUGE 304 SSSL		FINISH ⑨ SUPER #8		SYSTEM ADVANCED LIGO		SUB-SYSTEM AOS	
NEXT ASSY D1000429				DESIGNER N. NGUYEN		DATE 10 Jul 2010	
				CHECKER L. AUSTIN		SIZE D	
				APPROVAL M. SMITH		DWG. NO. D1000883	
				SCALE 1:2		PROJECTION 	
				SHEET 1 OF 1		REV. v2	

D1000883_AudiGO_AQS_SLC_Fold Mirror Elliptical Baffle Plate_PART PDM_REV: X-027_DRAWING PDM_REV: X-032