

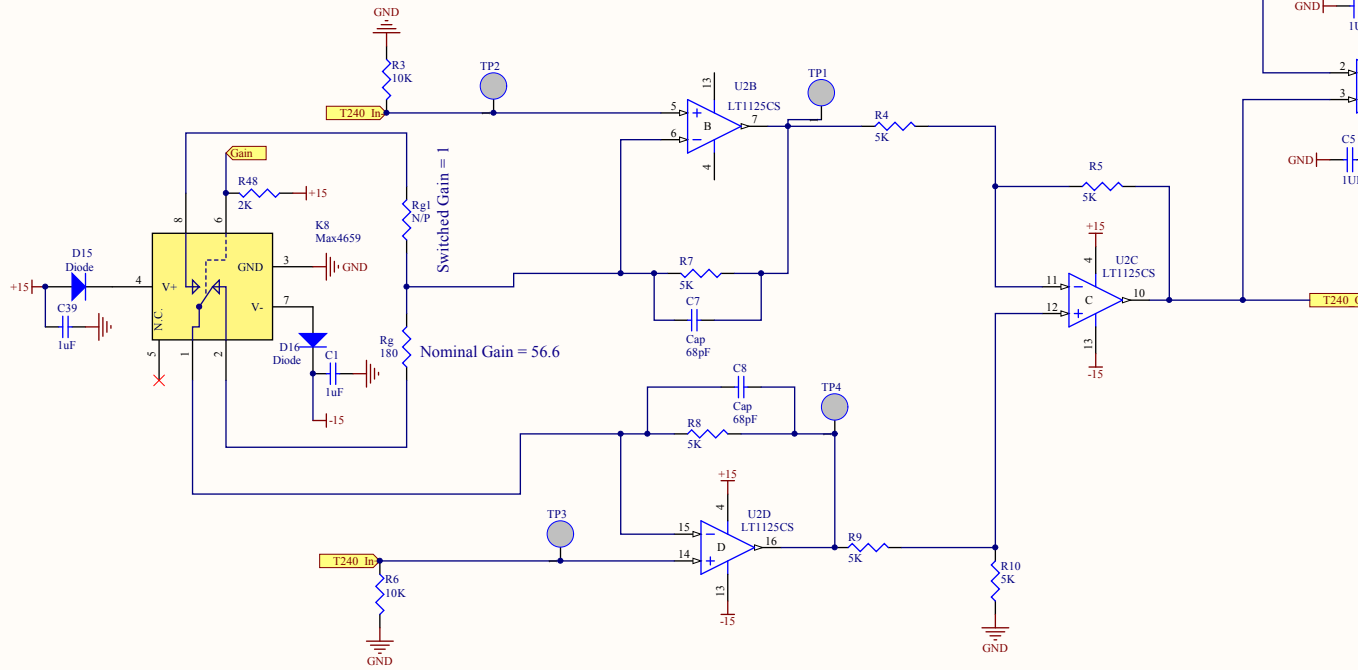
ad-R231 Trillium 240 Interface			
Rev:	Rev Number: 01/000/014	App: Project	Drawn with the
D:		Customer: Institute of Technology	C-Bot: Institute
Rev: 00/00	Rev: 01/00/01	Revision: v1	Number: 1/04
Date: 2014-01-13		Date: 2014-01-13	

$$\text{Gain} = 1 + 2 \cdot (5K / R_g)$$

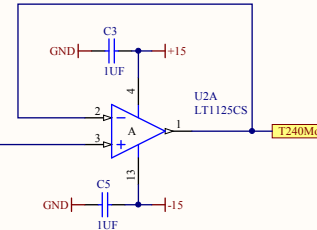
Overall gain = 110.25 per Brian Lantz's phone call 3/19/2010

Gain of this stage is 56.6 because of the x2 output gain.

### T240 X, Y, Z Differential Receiver Details

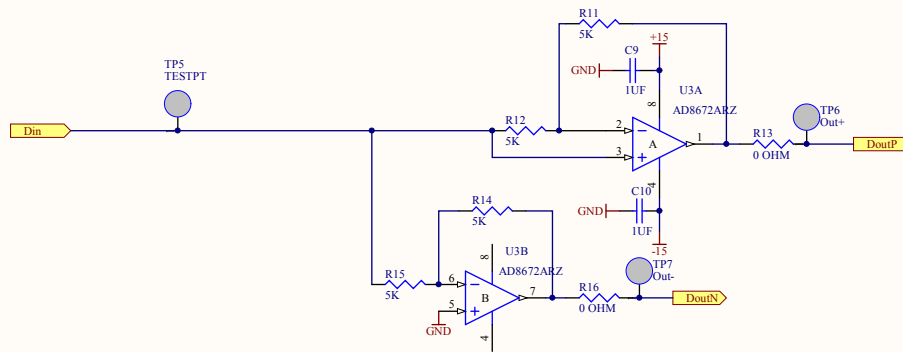


### T240 Buffer Amplifier Details



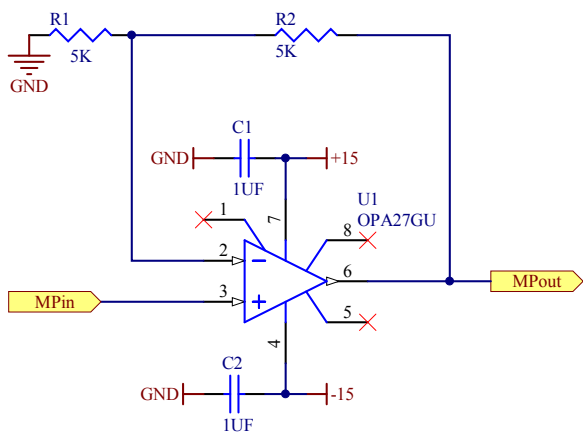
Title <b>aLIGO Trillium 240 Interface</b>			
Size: <b>B</b>	DCC Number: D1000749	Ligo Project California Institute of Technology Massachusetts Institute of Technology	
Drawn by: Ben Abbott	Date: 9/12/2011	Revision: v3	Cannot open file C:\Ben\miscellan y\ligologo_t.jpg
File: C:\restored\Ben\Seismic\JSD\BSC_ISI\Trillium Interface\T240Dif_SchDoc1 Time: 3:00:52 PM Sheet 2 of 4			

## T240 Output Differential Driver Details



Title		<b><i>aLIGO Trillium 240 Interface</i></b>	
Size:	B	DCC Number:	D1000749
Drawn by:	Ben Abbott	Date:	9/12/2011
		Revision:	v3
		<i>Ligo Project</i> California Institute of Technology Massachusetts Institute of Technology	
		Cannot open file C:\Ben\miscellan y\ligologo_1.jpg	
File: C:\restored\Ben\Seismic\ISL\BSC\ISL\Trillium Interface\T240Drv.SchDoc Time: 3:00:52 PM Sheet 3 of 4			

## T240 G=2 Amplifier Details



Title <b><i>aLIGO Trillium 240 Interface</i></b>			
Size: <b>A</b>	DCC Number: <b>D1000749</b>	<i>Ligo Project California Institute of Technology Massachusetts Institute of Technology</i>	Cannot open file C:\Ben\miscellan y\ligologo_t.jpg
Drawn by: <b>Ben Abbott</b>	Date: <b>9/12/2011</b>		
File: C:\restored\Ben\Seismic\ISI\BSC_ISI\Trillium Interface\T240Buf.Sch Date: 3:00:52 PM Sheet 4 of 4			

aLIGO Trillium 240 Interface  
LIG0-1000749-v2

S/N [Redacted]

