

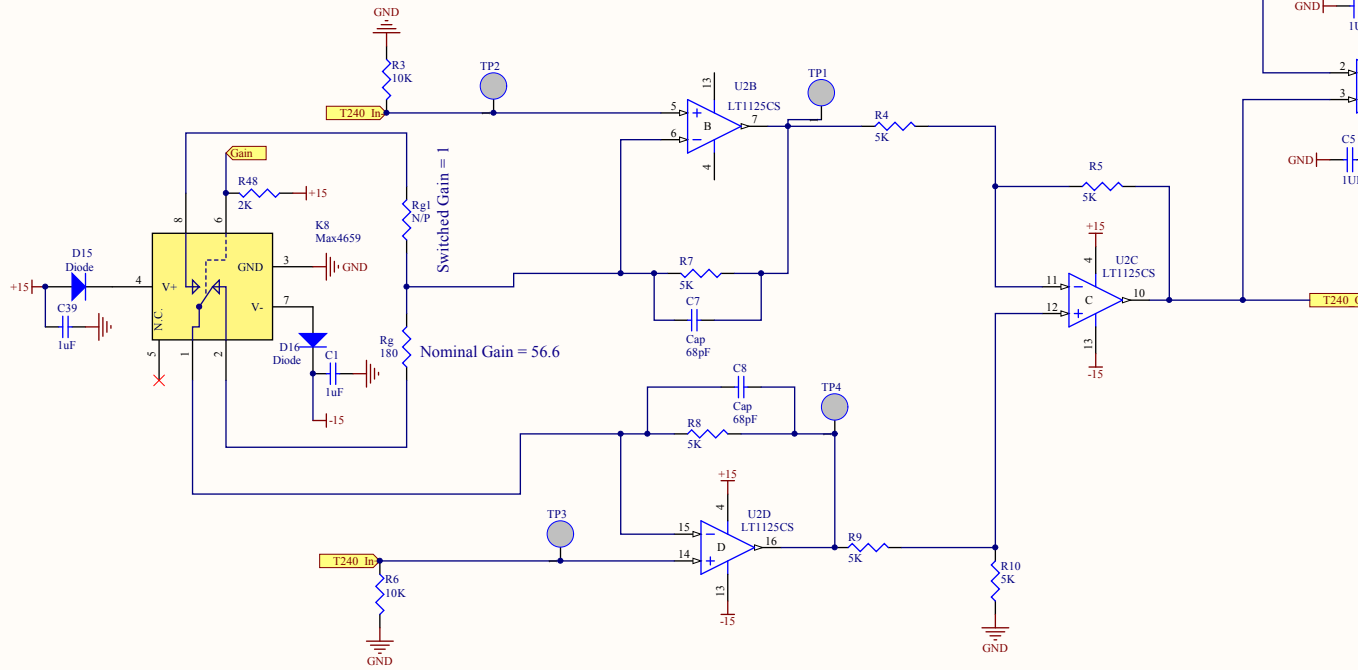
ad-RS232 Trillium 240 Interface			
Rev:	Rev Number: 01/00/01/04	App: Project	Drawn with the
D:		Customer: Institute of Technology	C-Bot: Institute
Rev: 00/00/00	Rev: 0/0/0/0	Revision: 02	Number: 1/04

$$\text{Gain} = 1 + 2 \cdot (5K / R_g)$$

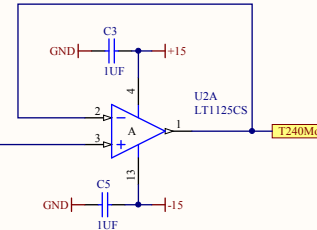
Overall gain = 110.25 per Brian Lantz's phone call 3/19/2010

Gain of this stage is 56.6 because of the x2 output gain.

T240 X, Y, Z Differential Receiver Details

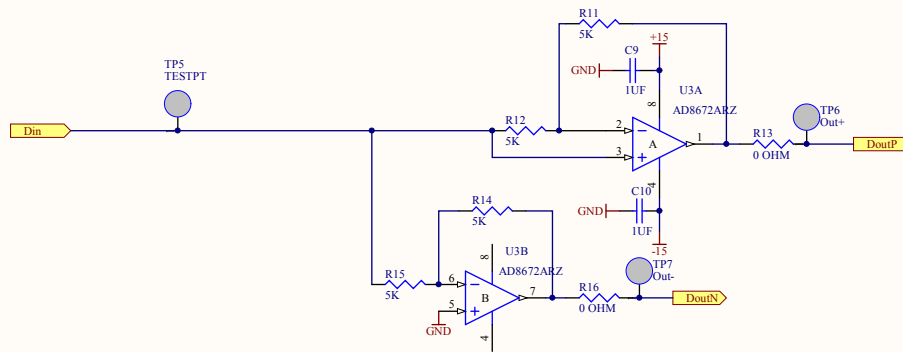


T240 Buffer Amplifier Details



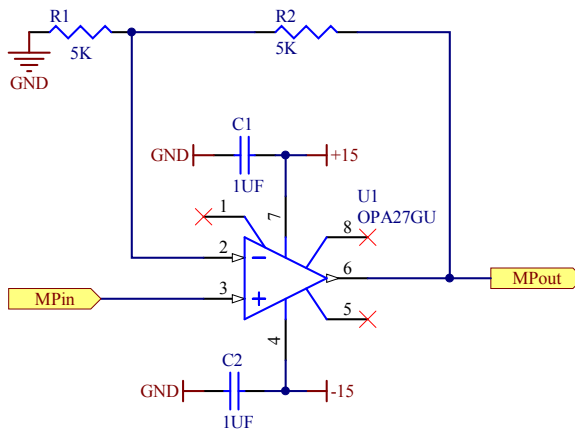
Title aLIGO Trillium 240 Interface			
Size: B	DCC Number: D1000749	Ligo Project California Institute of Technology Massachusetts Institute of Technology	
Drawn by: Ben Abbott	Date: 4/28/2011	Revision: v2	Cannot open file C:\Ben\miscellan y\ligologo_t.jpg
File: C:\restored\Ben\Seismic\ISI\BSC\ISI\Trillium Interface\T240\Diff SchDoc1 Time: 9:59:52 AM Sheet 2 of 4			

T240 Output Differential Driver Details



Title		aLIGO Trillium 240 Interface	
Size:	B	DCC Number:	D1000749
Drawn by:	Ben Abbott	Date:	4/28/2011
		Revision:	v2
		Ligo Project California Institute of Technology Massachusetts Institute of Technology	
		Cannot open file C:\Ben\miscellan y\ligologo_t.jpg	
File: C:\restored\Ben\Seismic\JSD\BSC_ISI\Trillium Interface\T240Drv_SchDoc1.doc Time: 9:59:52 AM Sheet 3 of 4			

T240 G=2 Amplifier Details



Title <i>aLIGO Trillium 240 Interface</i>			
Size: A	DCC Number: D1000749		<i>Ligo Project</i> <i>California Institute of Technology</i> <i>Massachusetts Institute of Technology</i>
Drawn by: Ben Abbott	Date: 4/28/2011	Revision: v2	
File: C:\restored\Ben\Seismic\ISI\BSC_ISI\Trillium Interface\T240Buf.Sch Date: 9:59:52 AM Sheet 4 of 4			

Cannot open file
 C:\Ben\miscellan
 y\ligologo_t.jpg

aLIGO Trillium 240 Interface
LIG0-1000749-v2

S/N [Redacted]

