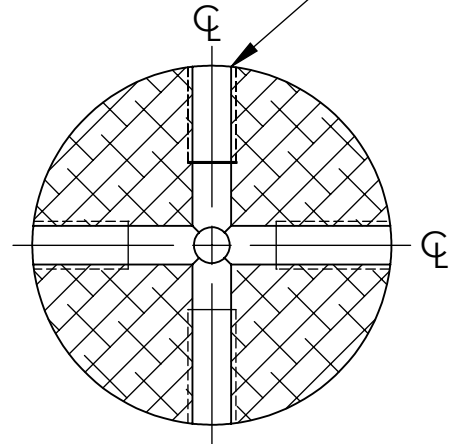


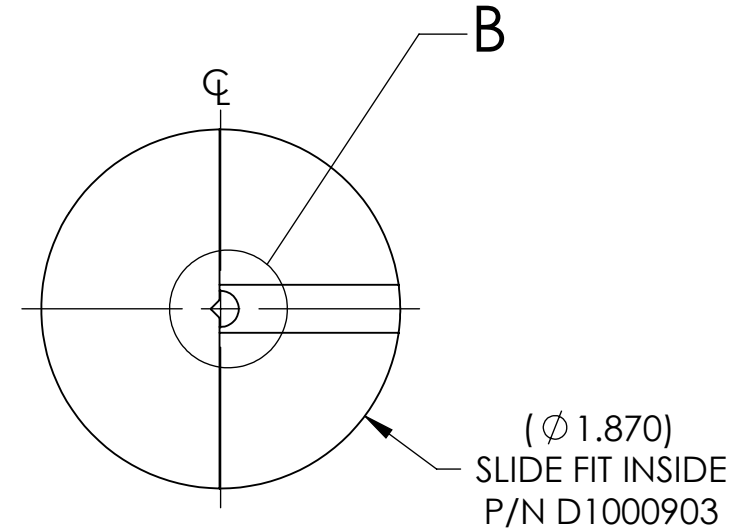
NOTES CONTINUED:
 ⑤ BAG ALL ITEMS AND MARK OR TAG EACH BAG WITH DRAWING NUMBER, REVISION, AND QUANTITY. EXAMPLE: DXXXXXX-VY, TYPE-XX, S/N XXX

REV.	DATE	DCN #	DRAWING TREE #
v1	02 JUNE 2010	E1000191	

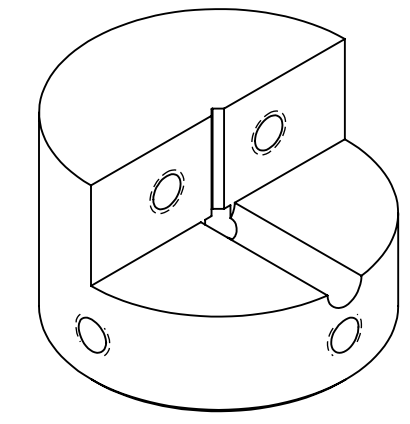
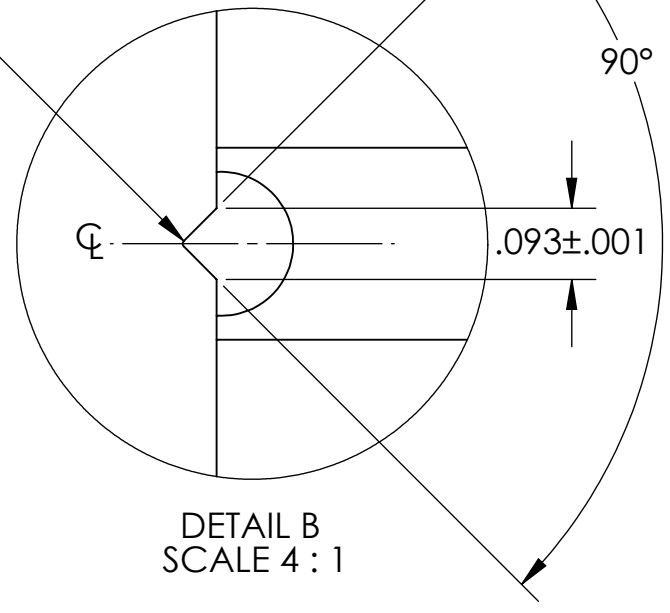
4X DRILL $\phi .201 \nabla 1.050$
 #1/4-20 UNC-2B $\nabla .500$
 +.005 OVERSIZE TAP
 EQUALLY SPACED



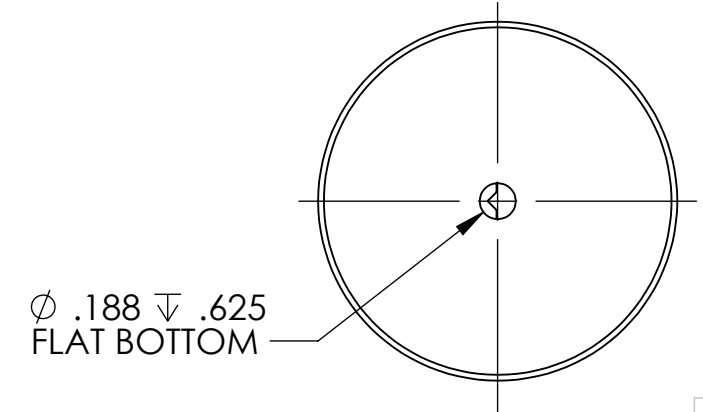
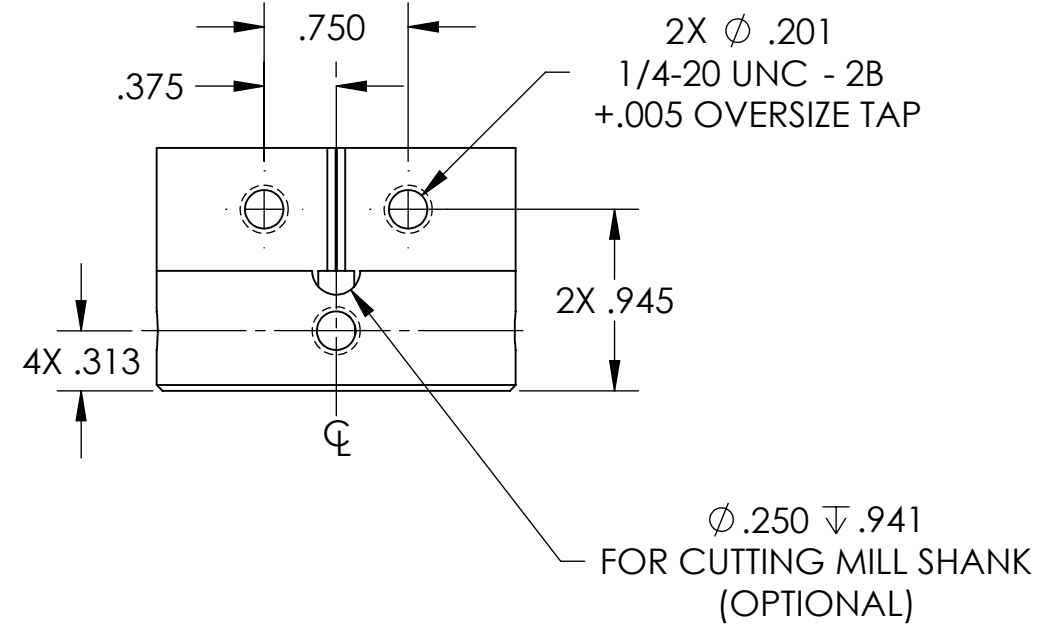
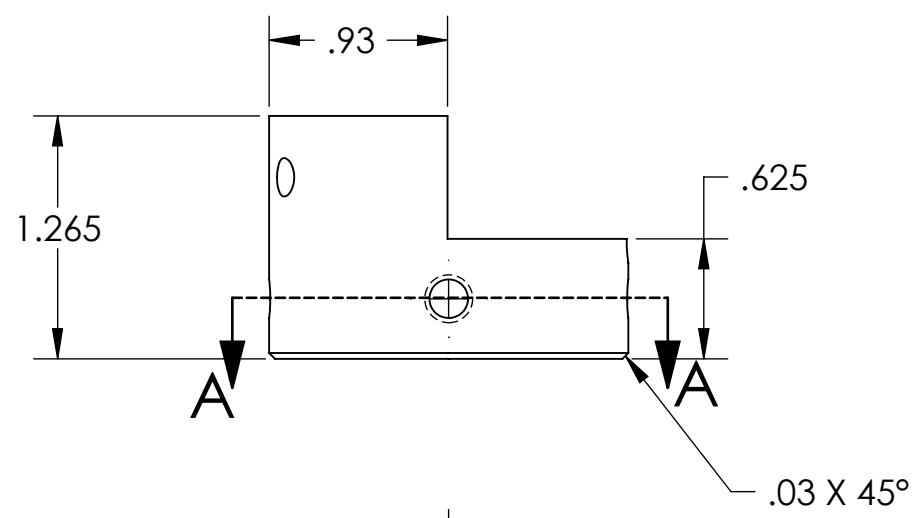
SECTION A-A



R.005 MAX



GENERAL VIEW
 NO SCALE
 FOR REFERENCE ONLY



NOTES AND TOLERANCES: (UNLESS OTHERWISE SPECIFIED)				LIGO CALIFORNIA INSTITUTE OF TECHNOLOGY MASSACHUSETTS INSTITUTE OF TECHNOLOGY		PART NAME	
DIMENSIONS ARE IN INCHES TOLERANCES: .XX ± .01 .XXX ± .005 ANGULAR ± 1.0°				1. INTERPRET DRAWING PER ASME Y14.5-1994. 2. REMOVE ALL SHARP EDGES, R.02 MIN. 3. DO NOT SCALE FROM DRAWING. 4. ALL MACHINING FLUIDS MUST BE FULLY SYNTHETIC, FULLY WATER SOLUBLE AND FREE OF SULFUR, SILICONE, AND CHLORINE.		SLC TUBE/WIRE CLAMP	
MATERIAL		FINISH		NEXT ASSY		DESIGNER N.Nguyen 01 Jun 2010 DRAFTER TQ. NGUYEN 24 MAY 2010 CHECKER M. SMITH 29 JUN 2010 APPROVAL D. COYNE 20 SEP 2010	
304 SSSL		32 μ inch		D1002115		SIZE DWG. NO. B D1000701 REV. v1	
				SCALE: 1:1		PROJECTION: SHEET 1 OF 1	

D1000701_AdLIGO_AOS_SLC Tube Wire Clamp, PART PDM REV: X-001, DRAWING PDM REV: X-001