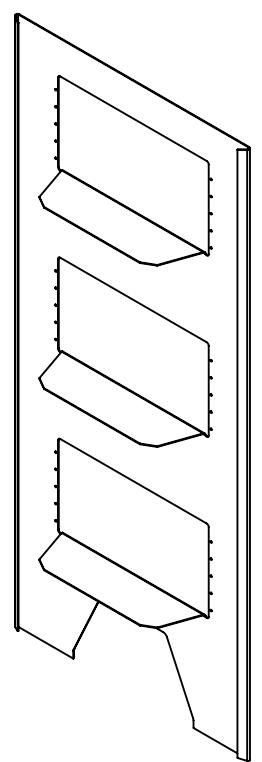
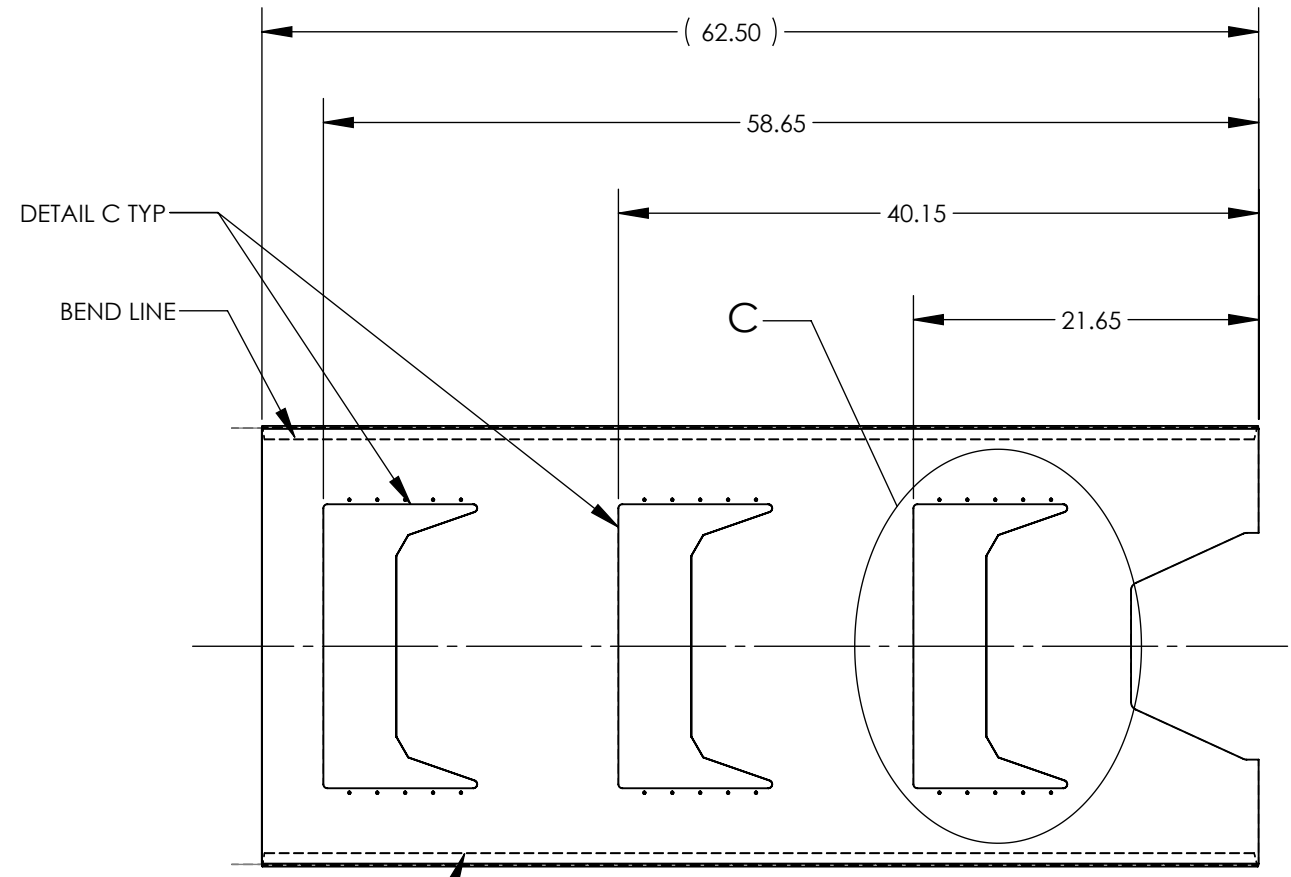
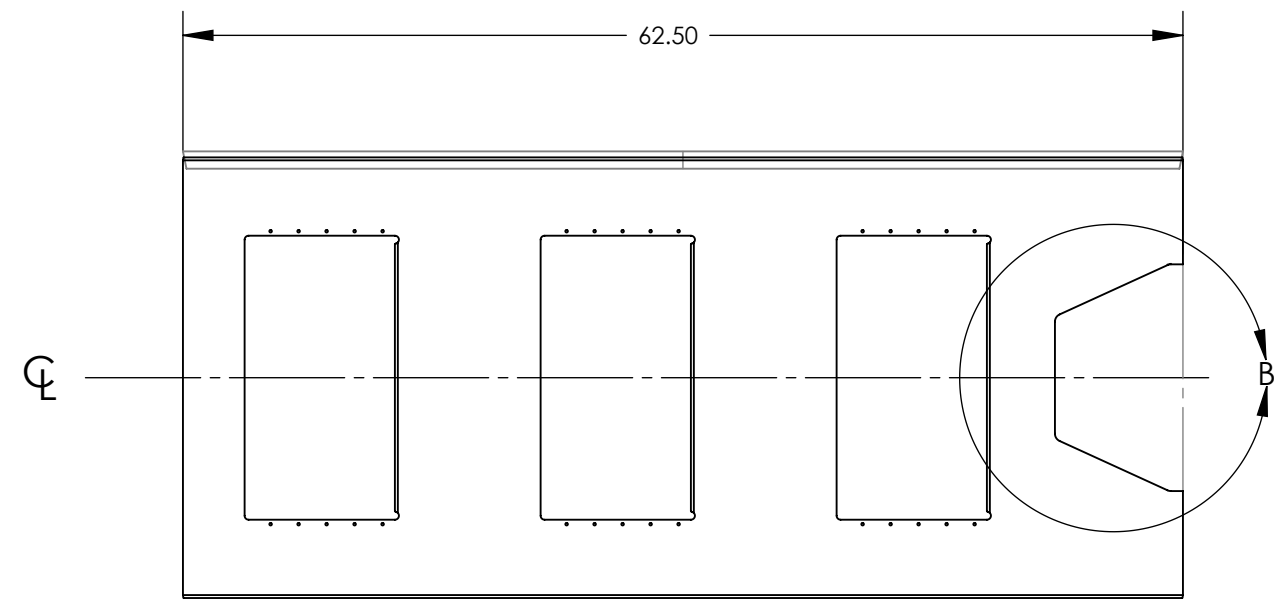
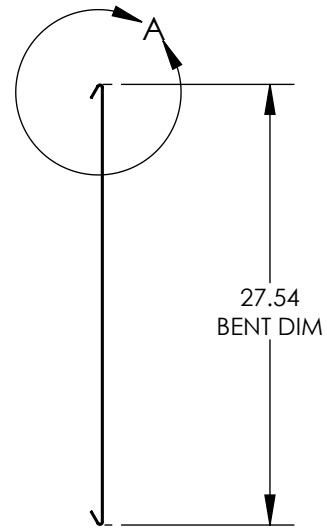


8 7 6 5 4 3 2 1

NOTES CONTINUED:
 Ⓢ STOCK FINISH / AS RECEIVED.

REV.	DATE	DCN #	DRAWING TREE #
v1	12 JUL 2011	-	-
v2	6 FEB 2012	-	-
v3	5 MAR 2012	E1200249-x0	-



FLAT PATTERN

NOTES AND TOLERANCES: (UNLESS OTHERWISE SPECIFIED)

DIMENSIONS ARE IN INCHES

TOLERANCES:
 .XX ± .01
 .XXX ± .005
 ANGULAR ± 1.0°

1. INTERPRET DRAWING PER ASME Y14.5-1994.
 2. REMOVE ALL SHARP EDGES, R.02 MIN.
 3. DO NOT SCALE FROM DRAWING.
 4. ALL MACHINING FLUIDS MUST BE FULLY SYNTHETIC, FULLY WATER SOLUBLE AND FREE OF SULFUR, SILICONE, AND CHLORINE.

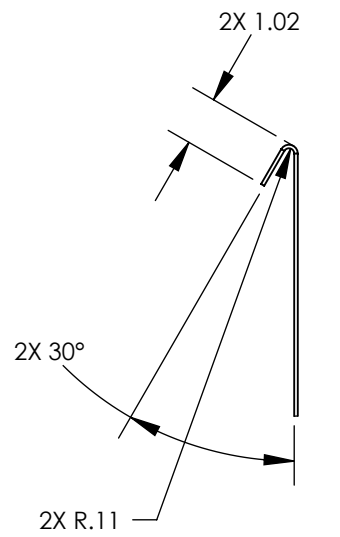
MATERIAL	304 SSSL 12 GA.	FINISH	N/A μinch
----------	-----------------	--------	-----------

CALIFORNIA INSTITUTE OF TECHNOLOGY MASSACHUSETTS INSTITUTE OF TECHNOLOGY		PART NAME		aLIGO AOS PhotCal TX Pier Side Panel	
SYSTEM	ADVANCED LIGO	SUB-SYSTEM	AOS	DESIGNER	C. CONLEY 24 JUN 2009
NEXT ASSY	D1000675	DRAFTER	N. KILPATRICK 12 JUL 2011	SIZE	DWG. NO.
		CHECKER		B	D1000672
		APPROVAL		SCALE:	1:12 PROJECTION:
					SHEET 1 OF 2

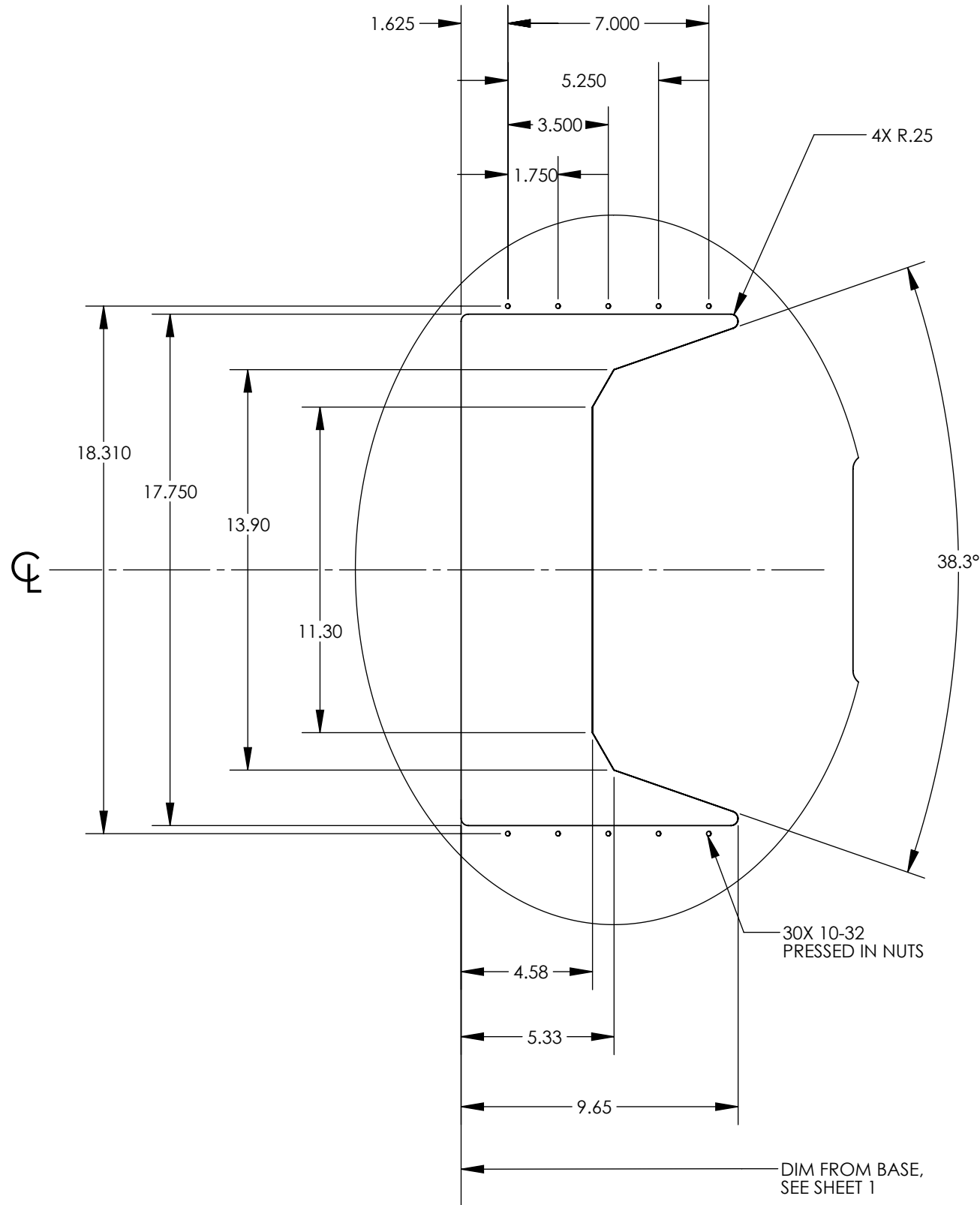
D1000672 aLIGO AOS PhotCal TX Pier Side Panel, PART PDM REV: X-026, DRAWING PDM REV: X-014

8 7 6 5 4 3 2 1

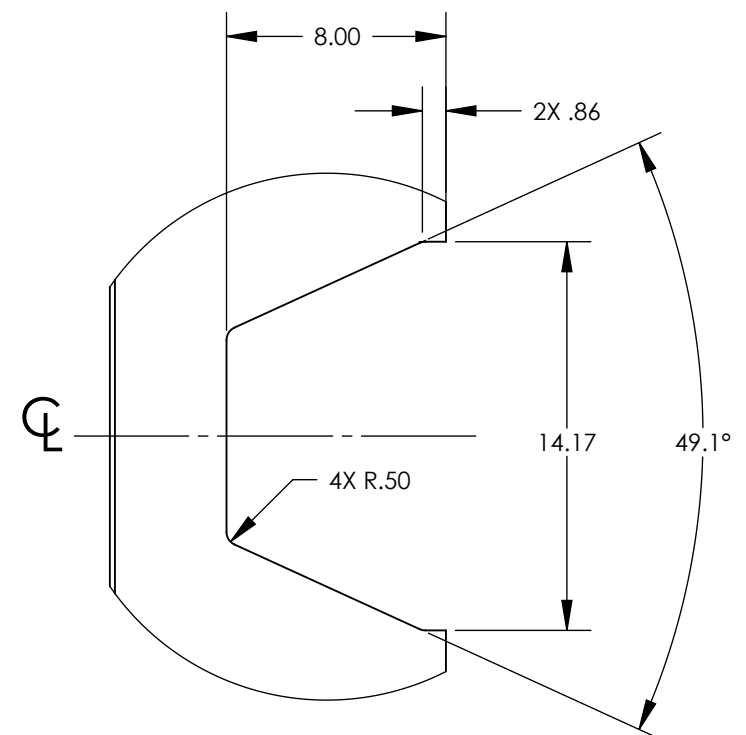
D1000672 aLIGO AOS PhotCcd TX Pier Side Panel, PART PDM REV: X-026, DRAWING PDM REV: X-014



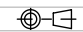
DETAIL A
SCALE 1 : 4
BOTH ENDS TYP



DETAIL C
SCALE 1 : 5



DETAIL B
SCALE 1 : 7

 CALIFORNIA INSTITUTE OF TECHNOLOGY MASSACHUSETTS INSTITUTE OF TECHNOLOGY	
SIZE B	DWG. NO. D1000672
SCALE: 1:12	PROJECTION: 
REV. v3	SHEET 2 OF 2