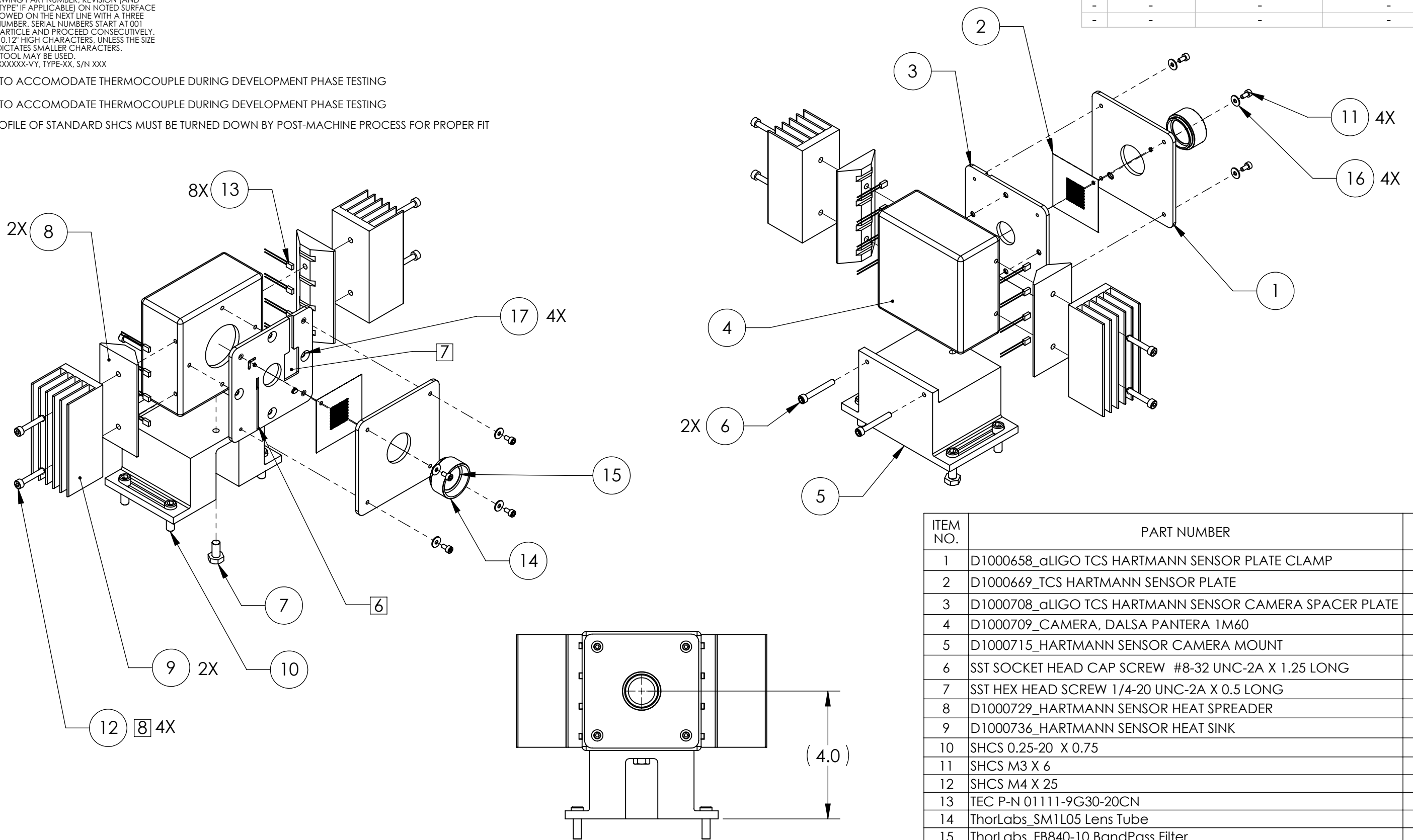


NOTES CONTINUED:
 5 SCRIBE, ENGRAVE, OR MECHANICALLY STAMP (NO INKS OR DYES) DRAWING PART NUMBER, REVISION (AND VARIANT OR "TYPE" IF APPLICABLE) ON NOTED SURFACE OF PART FOLLOWED ON THE NEXT LINE WITH A THREE DIGIT SERIAL NUMBER. SERIAL NUMBERS START AT 001 FOR THE FIRST ARTICLE AND PROCEED CONSECUTIVELY. USE MINIMUM 0.12" HIGH CHARACTERS, UNLESS THE SIZE OF THE PART DICTATES SMALLER CHARACTERS. A VIBRATORY TOOL MAY BE USED.
 EXAMPLE: DXXXXXX-VY, TYPE-XX, S/N XXX

- 6 FEATURE TO ACCOMODATE THERMOCOUPLE DURING DEVELOPMENT PHASE TESTING
- 7 FEATURE TO ACCOMODATE THERMOCOUPLE DURING DEVELOPMENT PHASE TESTING
- 8 HEAD PROFILE OF STANDARD SHCS MUST BE TURNED DOWN BY POST-MACHINE PROCESS FOR PROPER FIT

REV.	DATE	DCN #	DRAWING TREE #
-	-	-	-
-	-	-	-
-	-	-	-

D1000657_HARTMANN SENSOR, PART PDM REV: X-046, DRAWING PDM REV: X-007



ITEM NO.	PART NUMBER	QTY.
1	D1000658_αLIGO TCS HARTMANN SENSOR PLATE CLAMP	1
2	D1000669_TCS HARTMANN SENSOR PLATE	1
3	D1000708_αLIGO TCS HARTMANN SENSOR CAMERA SPACER PLATE	1
4	D1000709_CAMERA, DALSA PANTERA 1M60	1
5	D1000715_HARTMANN SENSOR CAMERA MOUNT	1
6	SST SOCKET HEAD CAP SCREW #8-32 UNC-2A X 1.25 LONG	2
7	SST HEX HEAD SCREW 1/4-20 UNC-2A X 0.5 LONG	1
8	D1000729_HARTMANN SENSOR HEAT SPREADER	2
9	D1000736_HARTMANN SENSOR HEAT SINK	2
10	SHCS 0.25-20 X 0.75	4
11	SHCS M3 X 6	4
12	SHCS M4 X 25	4
13	TEC P-N 01111-9G30-20CN	8
14	ThorLabs_SM1L05 Lens Tube	1
15	ThorLabs_FB840-10 BandPass Filter	1
16	SS FLAT WASHER, M3, METRIC-DIN 125	4
17	SS FH M4 X 6 [NOT SHOWN]	4

NOTES AND TOLERANCES: (UNLESS OTHERWISE SPECIFIED)
 1. INTERPRET DRAWING PER ASME Y14.5-1994.
 2. REMOVE ALL SHARP EDGES, R.02 MIN.
 3. DO NOT SCALE FROM DRAWING.
 4. ALL MACHINING FLUIDS MUST BE FULLY SYNTHETIC, FULLY WATER SOLUBLE AND FREE OF SULFUR, SILICONE, AND CHLORINE.

TOLERANCES:
 .XX ± .01
 .XXX ± .002
 ANGULAR ± 0.1°

DIMENSIONS ARE IN INCHES [MM]

MATERIAL: N/A
 FINISH: N/A μinch

LIGO CALIFORNIA INSTITUTE OF TECHNOLOGY MASSACHUSETTS INSTITUTE OF TECHNOLOGY

SYSTEM: ADVANCED LIGO SUB-SYSTEM: AOS NEXT ASSY: IN-AIR OPTICS TABLE

PART NAME: HARTMANN SENSOR, ASSEMBLY

DESIGNER: ADELAIDE 04-JAN-2010 SIZE DWG. NO.: B D1000657 REV.: v1
 DRAFTER: M. JACOBSON 24 MAR 2010
 CHECKER: ADELAIDE 25 MAR 2010
 APPROVAL: A. BROOKS 14 MAY 2010 SCALE: 1:2 PROJECTION: SHEET 1 OF 1