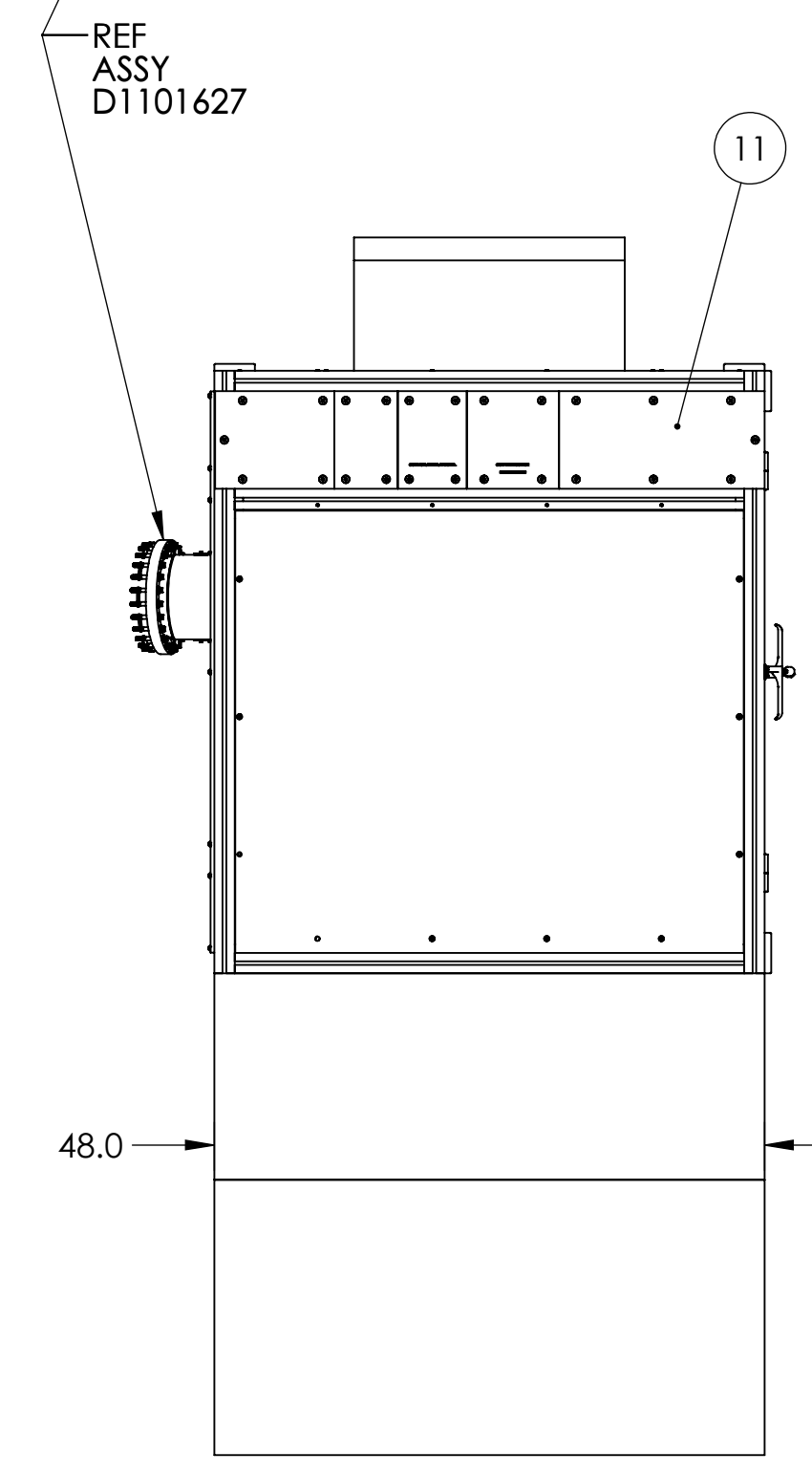
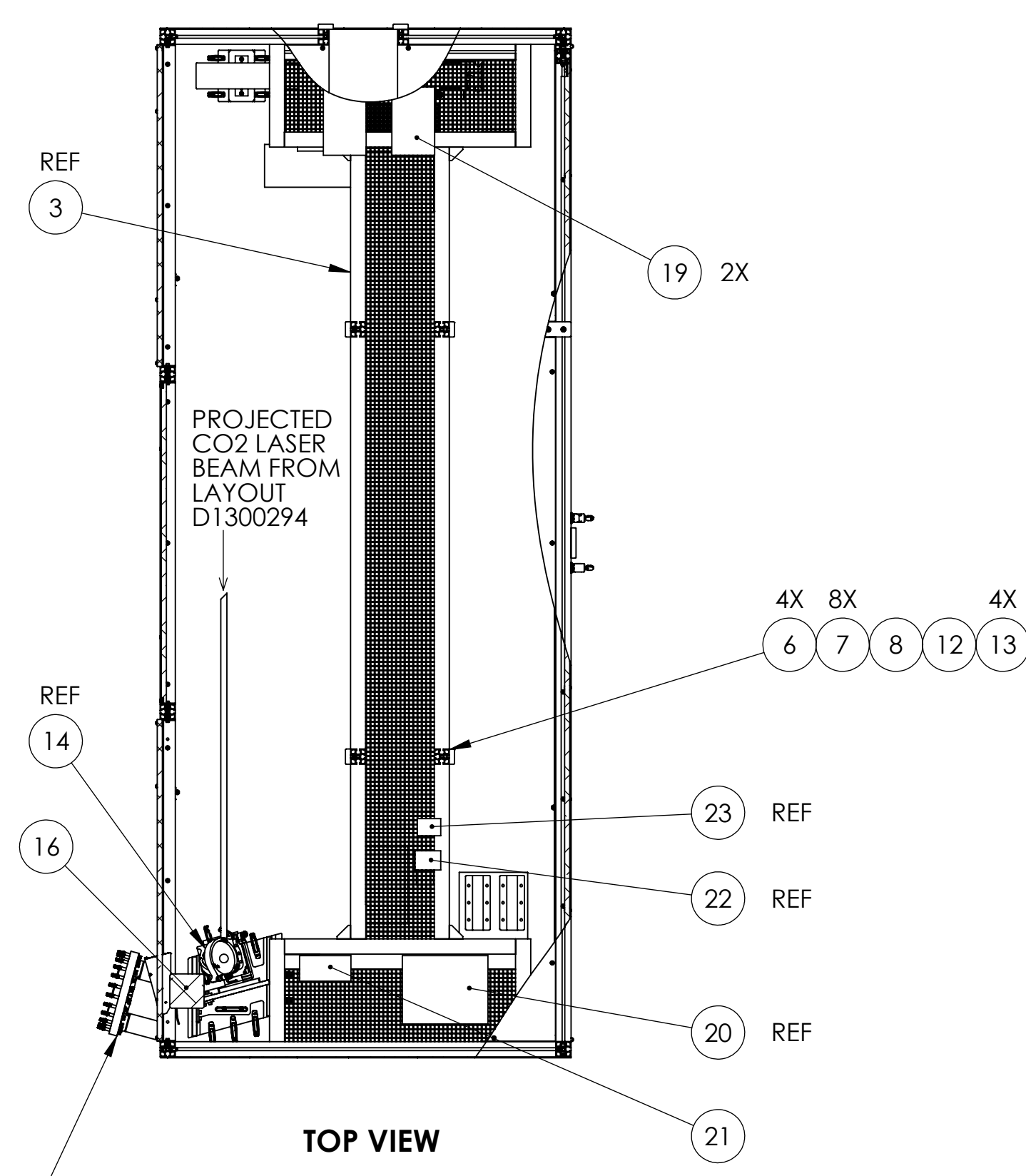


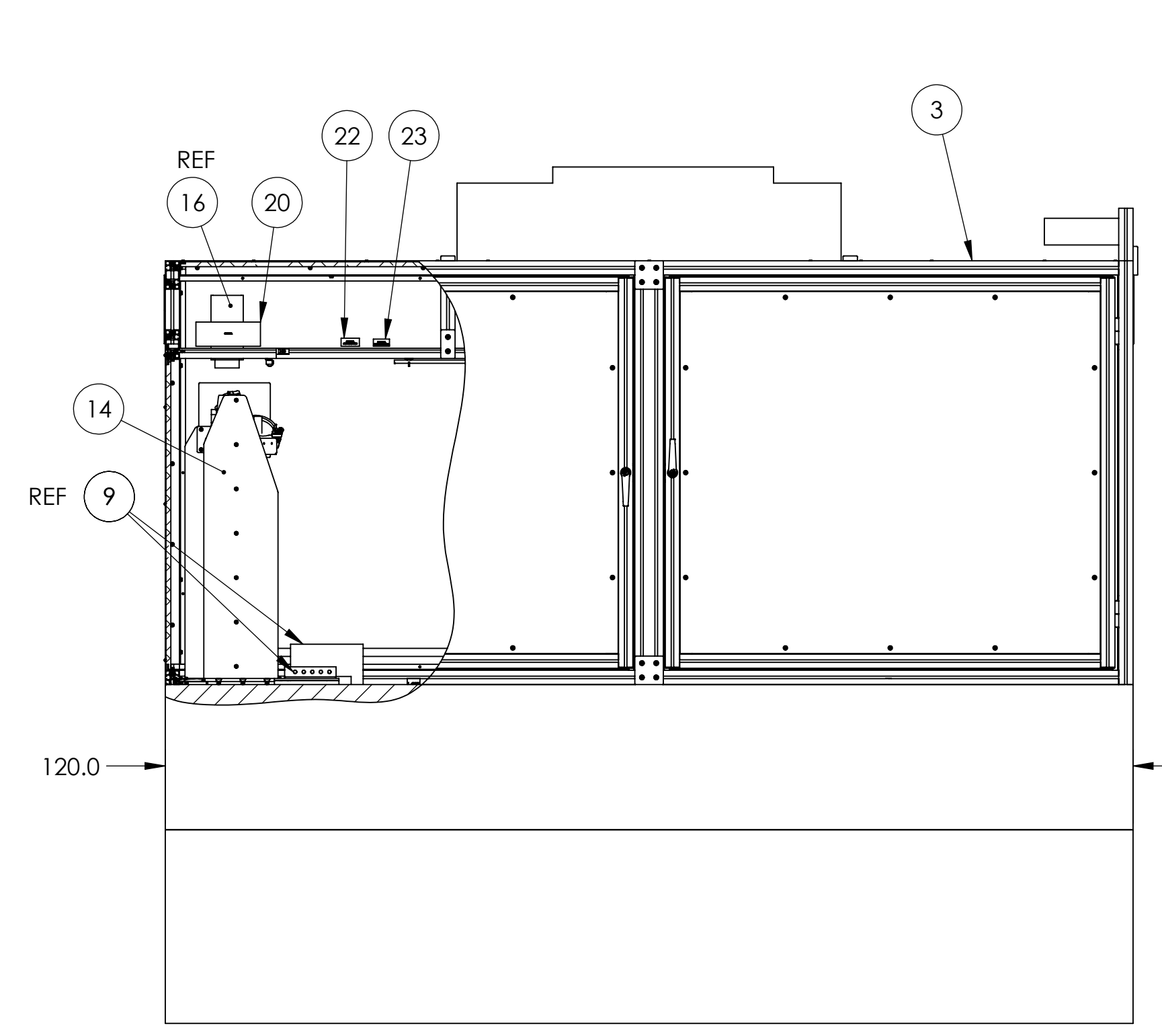
REV.	DATE	DCN #	DRAWING TREE #
v1	06-JAN-2014	E1400004-x0	E1400005-v1

ITEM NO.	PART NUMBER	DESCRIPTION	MATERIAL	BSC3-01, X-ARM, H1-L1/QTY.	BSC1-02, Y-ARM, H1-L1/QTY.
23	PRL-350TTL	SINE TO TTL SIGNAL CONVERTER	MULTI	1	1
22	[RF50]	LASY-SOLT RF SIGNAL DISTRIBUTOR	MULTI	1	1
21	D1300366	TCS IR SENSOR COMPARATOR BOX	MULTI	1	1
20	D1201062	CO2 PROJECTOR ON-TABLE BREAKOUT BOX	MULTI	1	1
19	D1101738	PICOMOTOR BREAKOUT BOX	MULTI	2	2
18	D1101509	PICOMOTOR DRIVER CHASSIS	MULTI	1	1
17	D1300649	ALIGO TCS ISS and INTERFACE CHASSIS	MULTI	1	1
16	TBD	DIGITAL CAMERA, OPTICAL ALIGNMENT	N/A	1	1
15	D1200953-02	PERISCOPE ASSY, IN AIR, ALIGO TCS CO2P, H1-L1 (Yarm)	AI	0	1
14	D1200953-01	PERISCOPE ASSY, IN AIR, ALIGO TCS CO2P, H1-L1 (Xarm)	AI	1	0
13	LBFA-ix	LUXBAR INTERCONNECT JUMPER	N/A	4	4
12	LBFA-DT	LUXBAR MINI TOUCH DIMMER	MULTI	1	1
11	D1300764	ALIGO TCS CO2P ENCLOSURE PATCH PANEL ASSY, PERISCOPE END	MULTI	1	1
10	D1300508	ALIGO TCS CO2P ENCLOSURE PATCH PANEL ASSY, LASER END	MULTI	1	1
9	D1300294	H1-L1 LAYOUT, ALIGO TCS CO2P TABLE ASSY	MULTI	1	1
8	24VDC-PS	LUXBAR 24 VDC ENCLOSED POWER SUPPLY	MULTI	1	1
7	7566K25	CABLE TIE HOLDER ADHESIVE BACKED, FOUR WAY MCMMASTER-CARR	NYLON	10	10
6	LBFA-NW24	LBFA LUXBAR SERIES 24VDC LINEAR LIGHT FIXTURE	N/A	4	4
5	D1200761-02	ALIGO TCS CO2P TABLE ENCLOSURE	N/A	0	1
4	MAC 10	HEPA FAN-FILTER UNIT	N/A	1	1
3	D1200761-01	ALIGO TCS CO2P TABLE ENCLOSURE	MULTI	1	0
2	RS4000-410-18	OPTICS TABLE 4 FT X 10 FT X 18 IN	MULTI	1	1
1	RL-2000-423.5TC	TCS CO2P OPTICS TABLE SUPPORTS, 24 in	MULTI	1	1

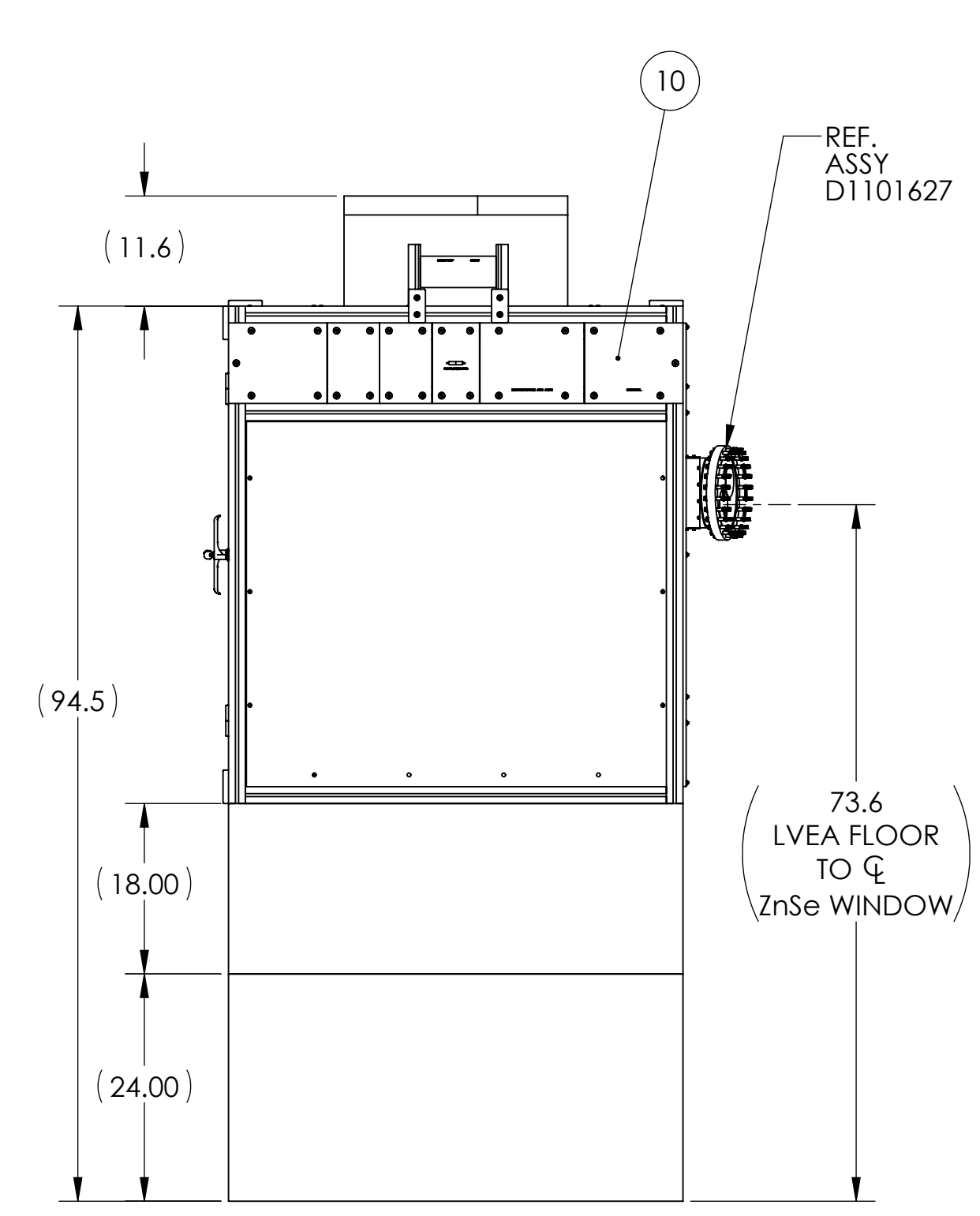
ITEM NO.	PART NUMBER	DESCRIPTION	MATERIAL	BSC3-01, X-ARM, H1-L1/QTY.	BSC1-02, Y-ARM, H1-L1/QTY.
PARTS LIST					



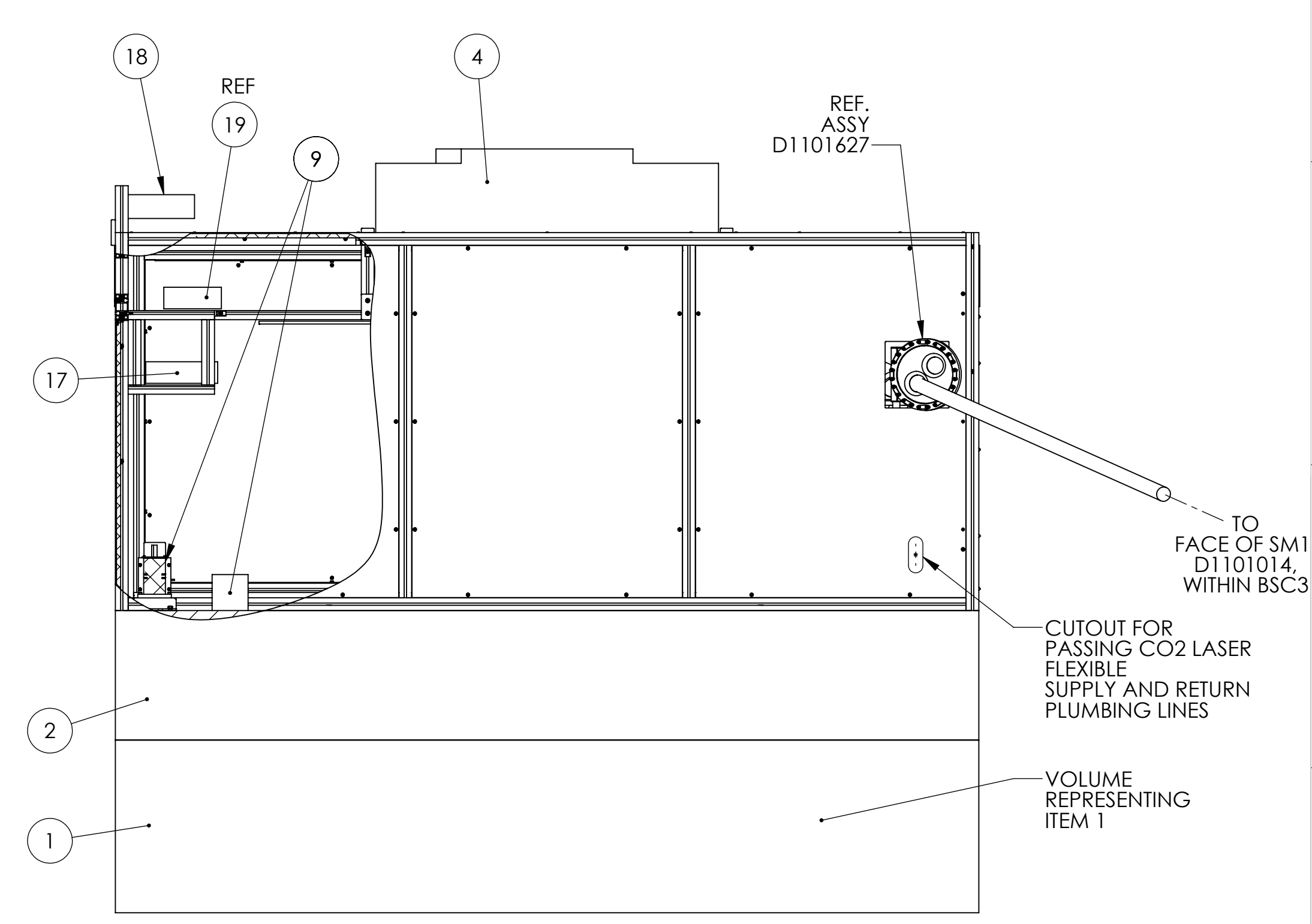
FACING THE PERISCOPE END OF THE TABLE



FACING TWO HINGED DOORS OF THE TABLE



FACING THE LASER END OF THE TABLE



FACING THREE FIXED PANELS OF THE TABLE

-01
X-ARM
ADJACENT TO BSC3

NOTES AND TOLERANCES: (UNLESS OTHERWISE SPECIFIED)	
DIMENSIONS ARE IN INCHES	
TOLERANCES: .XX ± .XXX ±	
ANGULAR ± °	
MATERIAL	MULTI
FINISH	N/A μinch

CALIFORNIA INSTITUTE OF TECHNOLOGY MASSACHUSETTS INSTITUTE OF TECHNOLOGY	
SYSTEM	ADVANCED LIGO
SUB-SYSTEM	AOS
NEXT ASSY	D1001227

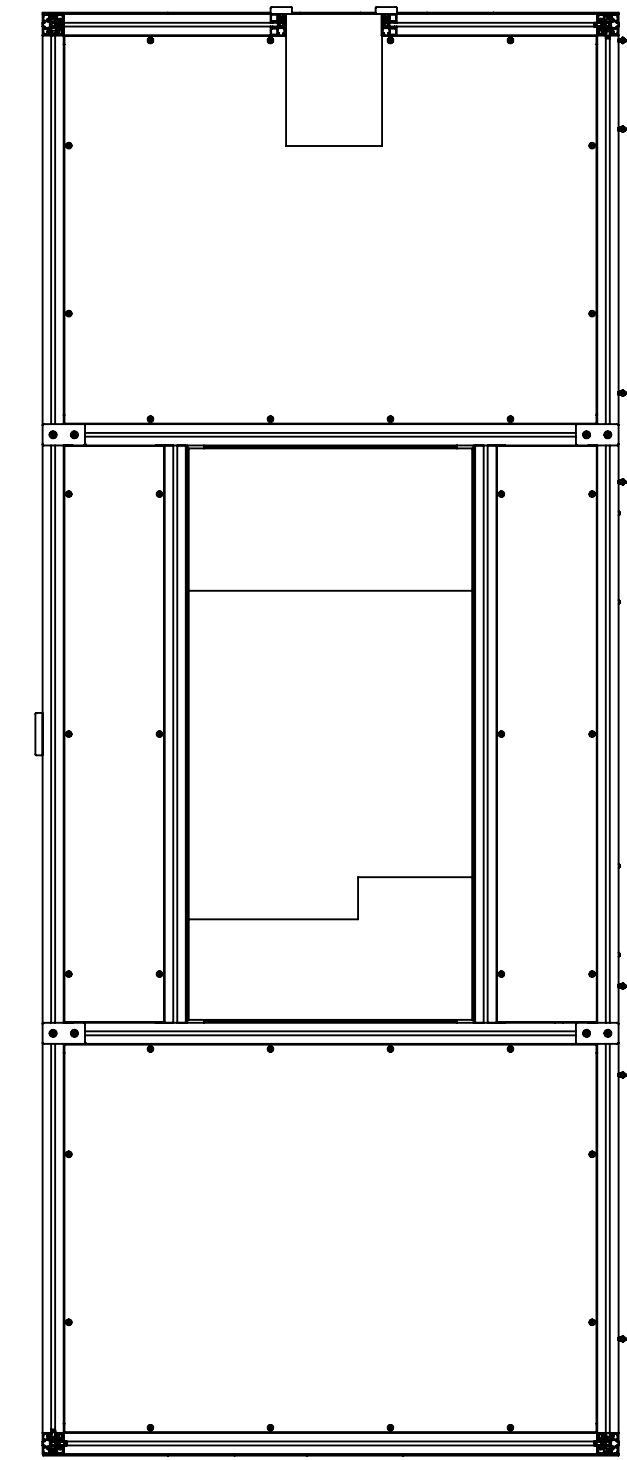
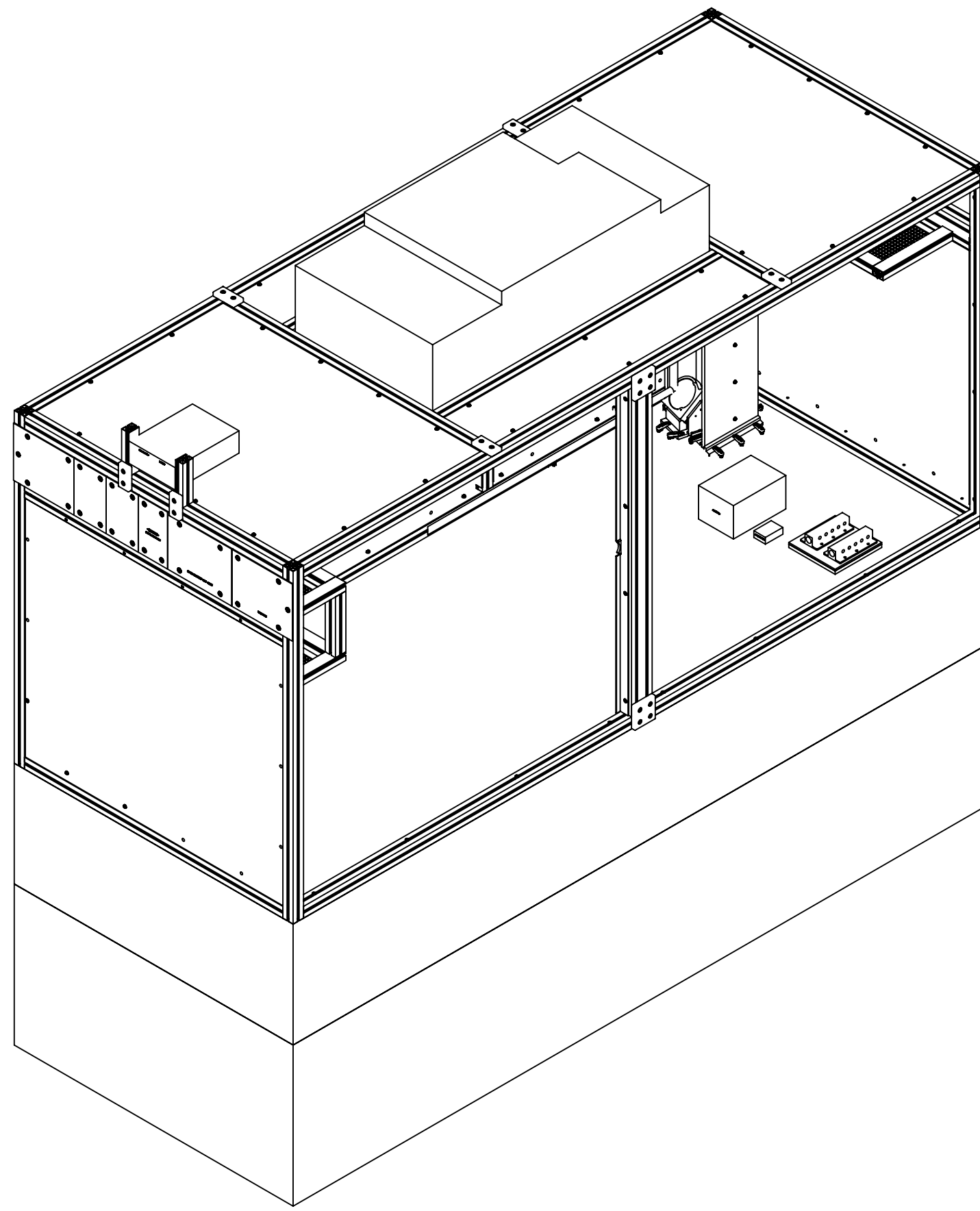
PART NAME		TCS CO2P TABLE ASSEMBLY, H1/L1	
DESIGNER	M. JACOBSON	19-MAR-10	SIZE DWG. NO.
DRAFTER	M. JACOBSON	18-DEC-2013	D D1000634-01
CHECKER	A. HEPTONSTALL	18-DEC-2013	
APPROVAL	D. COYNE	SCALE: 1:16	PROJECTION:
		SHEET 1 OF 2	

D1000634_TCS_CO2P_TABLE_ASSY_H1-L1_PART_PDM_REV_X-270_DRAWING_PDM_REV_X-008

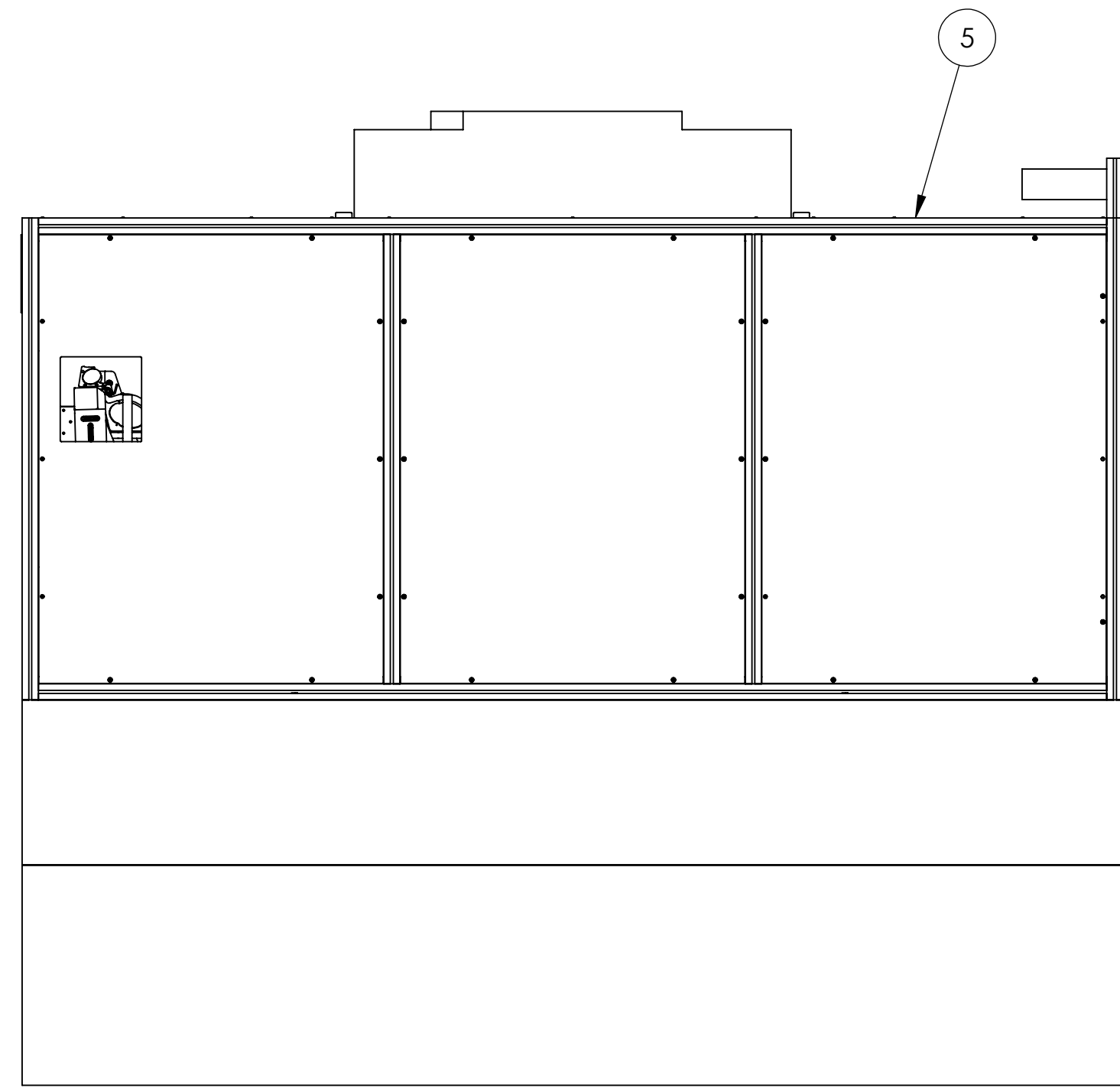
8 7 6 5 4 3 2 1

H
G
F
E
D
C
B
A

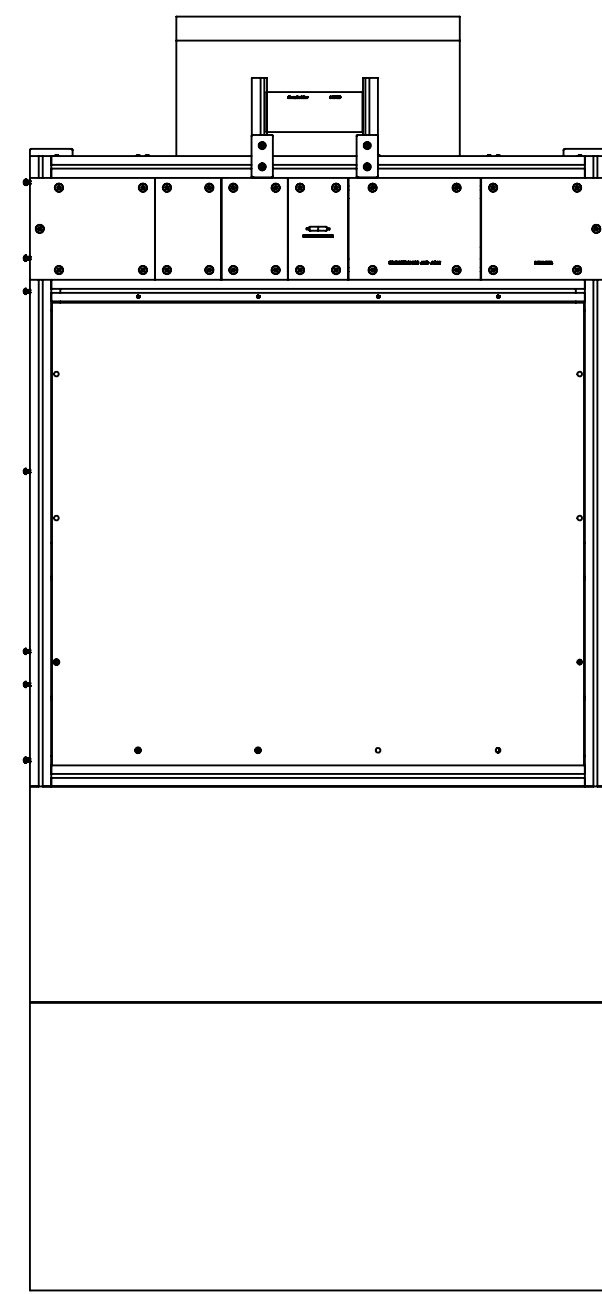
H
G
F
E
D
C
B
A



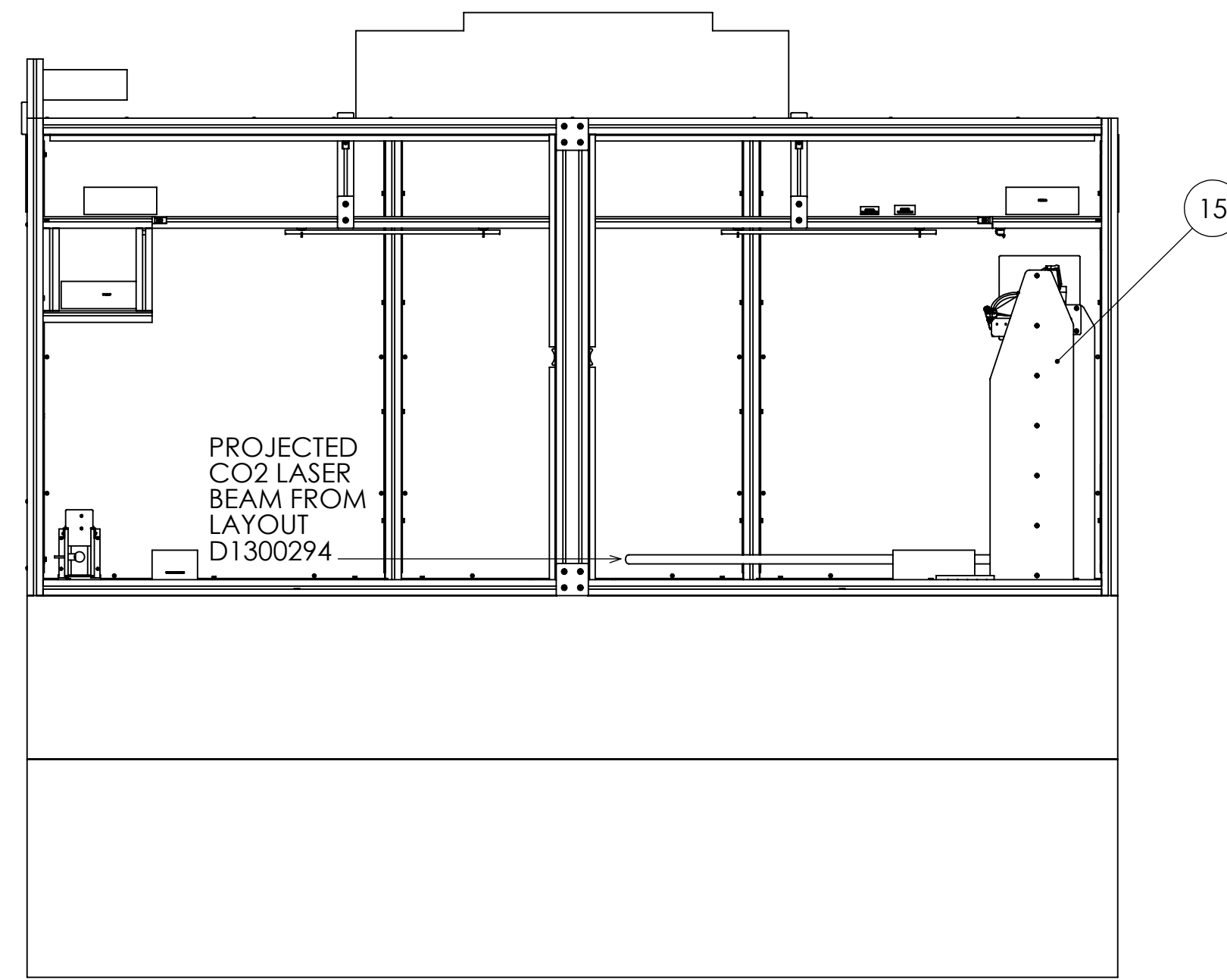
TOP VIEW



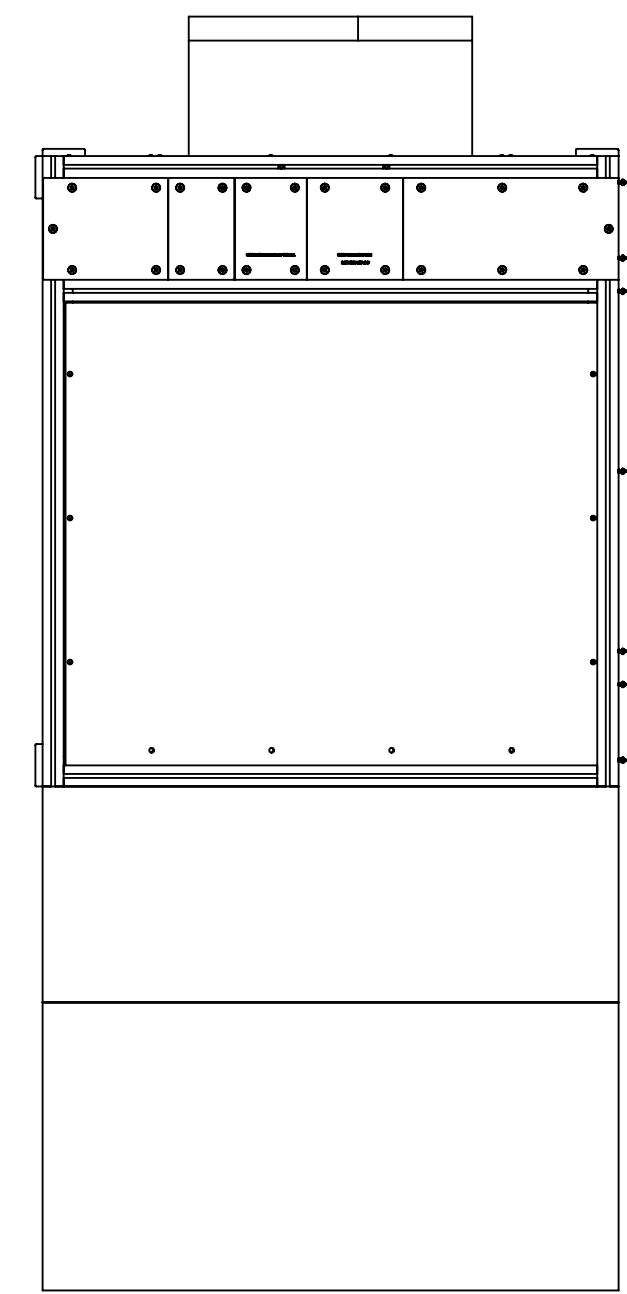
FACING THREE FIXED PANELS OF THE TABLE



FACING THE LASER END OF THE TABLE



FACING TWO HINGED DOORS OF THE TABLE (DOORS OMITTED FOR CLARITY)



FACING THE PERISCOPE END OF THE TABLE

-02
Y-ARM
ADJACENT TO BSC1

		CALIFORNIA INSTITUTE OF TECHNOLOGY MASSACHUSETTS INSTITUTE OF TECHNOLOGY	
SIZE	DWG. NO.	REV.	
D	D1000634-02	v1	
SCALE: 1:16	PROJECTION:	SHEET 2 OF 2	

8 7 6 5 4 3 2 1

D:\000634\TCS CO2 LASER ASST_H\L1 PART PDM REV X-270 DRAWING PDM REV X-008