

NOTES CONTINUED:

- 6. APPROXIMATE WEIGHT - X.XXXX LB. VIBRATORY TOOL MAY BE USED.
7. MACHINE ALL SURFACES TO REMOVE OXIDES AND MILL FINISH. USE OF ABRASIVE REMOVAL TECHNIQUES IS NOT ALLOWED. REFER TO LIGO-ED900364.
8. ALL PARTS SHALL BE MANUFACTURED IN ACCORDANCE WITH LIGO SPECIFICATION 19990364.
9. ALL TOLERANCES SHALL BE PREPARED ACCORDING TO MIL-STD-883C-2000 PRODUCT CATEGORY: PERFORM: 3017

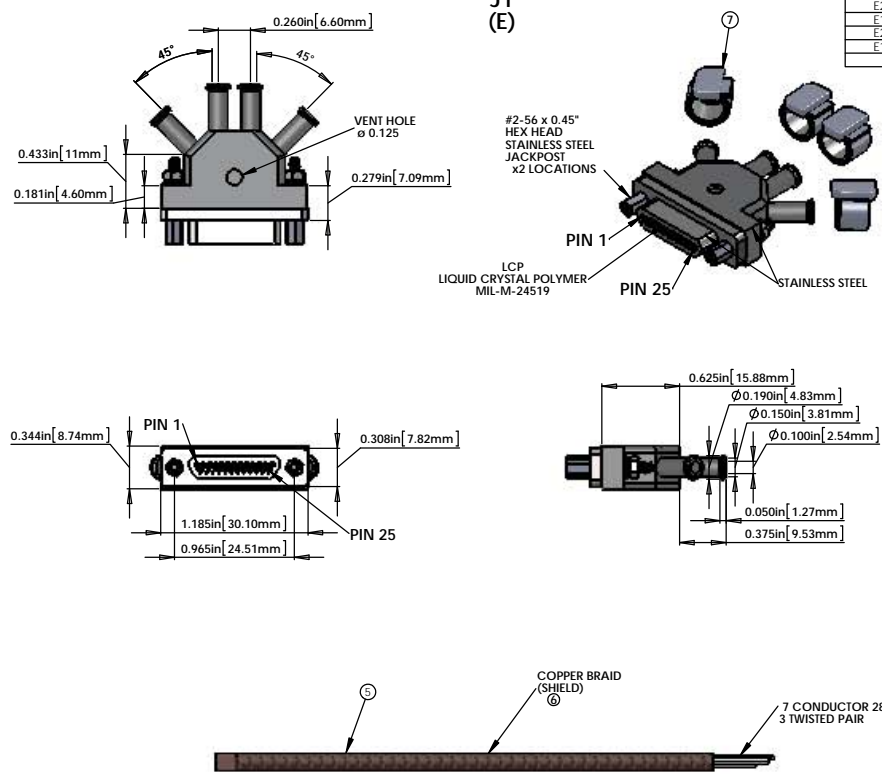
- 10. ALL TIGHTENING SHALL BE INSTALLED BY LIGO PERSONNEL.
11. ALL MATERIAL IS TO BE VIRGIN MATERIAL (i.e. NO WELD REPAIRS, PLUGS OR RECYCLED MATERIAL). NO REPAIRS SHALL BE MADE UNLESS APPROVED IN ADVANCE, AND IN WRITING, BY LIGO LABORATORY. REFER TO LIGO-ED900364.
12. SURFACE FINISH TO BE AS PROCESSED FROM MILL/SUPPLIER, FREE FROM SCRATCHES OR GOUGES.
13. THE WIRE SHALL BE CLEAN COATED PER LIGO SPECIFICATION 19990364. AFTER FABRICATION, THE ENCLOSED WIRE SHALL BE MASKED PRIOR TO PORCELAIN COATING. PORCELAIN SHALL BE 2.75 INCH DIAMETER APPLIED ON BOTH SIDES OF THE WIRE.
14. THE WIRE SHALL BE TESTED TO FAILURE PRIOR TO PORCELAIN COATING.
15. BEND RADIUS: UNLESS OTHERWISE NOTED, THE BEND RADIUS SHOULD BE THE MINIMUM REQUIRED TO FORM WITHOUT CRACKING OR REQUIRING ADDITIONAL WORK. WHEN FORMING, IN PARTICULAR SHEET METAL, IS TO BE PORCELAIN COATED, THE BEND RADIUS SHALL BE A MINIMUM OF 12" OUTSIDE RADIUS OF BEND UNLESS OTHERWISE NOTED.

V25AM-23-B CABLE ASSEMBLY CIRCUIT SUMMARY V-μD25 M/S1-23-4_μD9 F/S5:B. FROM CONNECTOR J1 - 25 PIN MALE MICRO_D CONNECTOR. TABLE with columns: PIN, WIRE NAME, COLOR, LENGTH, TWISTED PAIR.

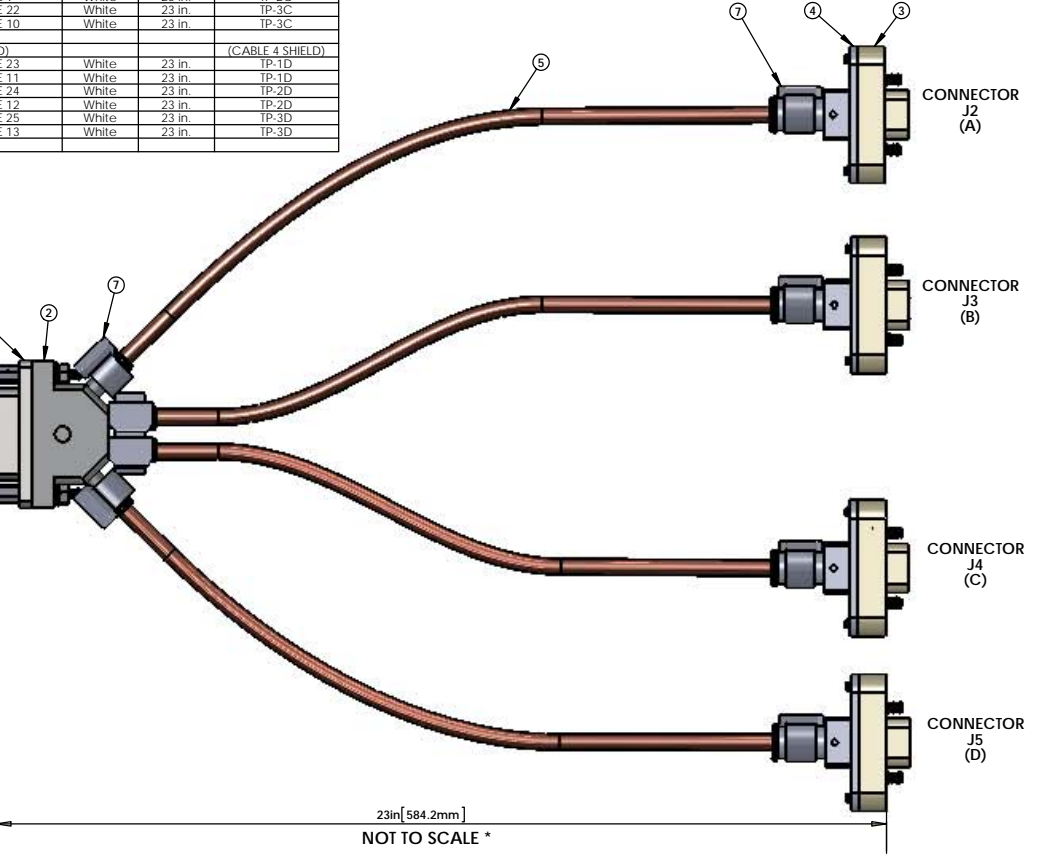
Revision table with columns: REV., DATE, DCN #, DRAWING TREE #.

NOTES 9, 10, 13 and 14 DO NOT APPLY TO THIS PART

CONNECTOR J1 (E)



CONNECTOR J1 (E)



V25AM-23-B CABLE ASSEMBLY CIRCUIT SUMMARY TO

Circuit summary table for Connector J2 - 9 PIN FEMALE MICRO_D CONNECTOR (PEEK) listing pin numbers, wire names, and signals.

V25AM-23-B CABLE ASSEMBLY CIRCUIT SUMMARY TO

Circuit summary table for Connector J3 - 9 PIN FEMALE MICRO_D CONNECTOR (PEEK) listing pin numbers, wire names, and signals.

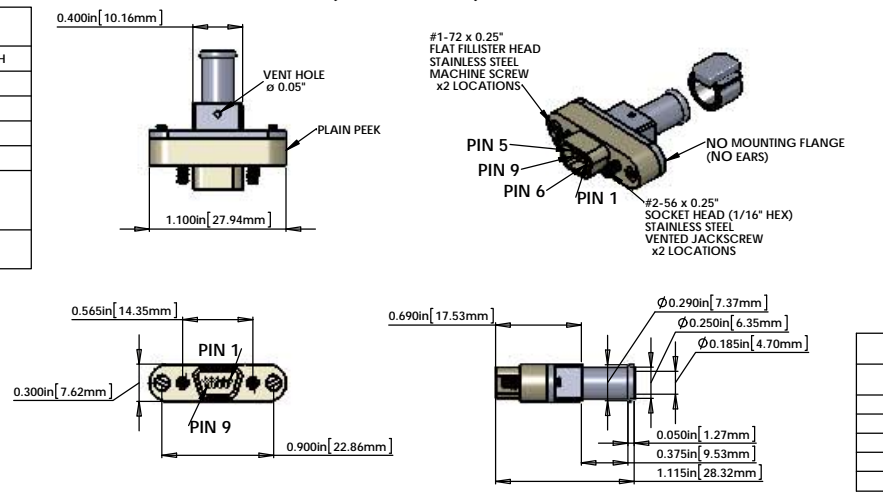
V25AM-23-B CABLE ASSEMBLY CIRCUIT SUMMARY TO

Circuit summary table for Connector J4 - 9 PIN FEMALE MICRO_D CONNECTOR (PEEK) listing pin numbers, wire names, and signals.

V25AM-23-B CABLE ASSEMBLY CIRCUIT SUMMARY TO

Circuit summary table for Connector J5 - 9 PIN FEMALE MICRO_D CONNECTOR (PEEK) listing pin numbers, wire names, and signals.

CONNECTOR J2, J3, J4, J5 (A, B, C, D)



BILL OF MATERIALS table listing item numbers, part numbers, descriptions, quantities, and lengths for various components.

* NOTE: THE OVERALL LENGTH IS MEASURED FROM PIN TIP (25 PIN) TO PIN TIP (9 PIN) OF THE CABLE. USE WHATEVER LENGTH IS NECESSARY FOR THE INTERNAL WIRING OF THE CONNECTORS AND STRIP LENGTH TO ACHIEVE THE CORRECT OVERALL LENGTH.

- NOTES: (UNLESS OTHERWISE SPECIFIED)
A. MATERIAL: a. 25 PIN D CONNECTOR SHELL - J1 (E) STAINLESS STEEL OVER LCP - (LIQUID CRYSTAL POLYMER per MIL-M-24519).
b. 9 PIN D CONNECTOR SHELL - J2 (A), J3 (B), J4 (C), J5 (D) - PEEK - VICTREX 450GL30.
c. BACKSHELL - STAINLESS STEEL WITH VENT HOLE.
d. CONTACTS - BERYLLIUM COPPER ALLOY C17300, 0.00050 MIN. GOLD OVER NICKEL.
e. HARDWARE: STAINLESS STEEL, PASSIVATED.
f. PEEK BRAID - PEEK CARBON FIBRE LOADED.

V-μD25 M/S1-23-4_μD9 F/S5:B (NO PEEK) STANDARD USE FOR THIS CABLE

Table with columns: SUBSYSTEM, STANDARD USE, SUS, QUAD SUSPENSIONS UIM.

Footer area containing LIGO logo, drawing title 'CUSTOM CABLE SPECIFICATION V25AM-23-B', designer/drafter information, date, and revision 'v5'.