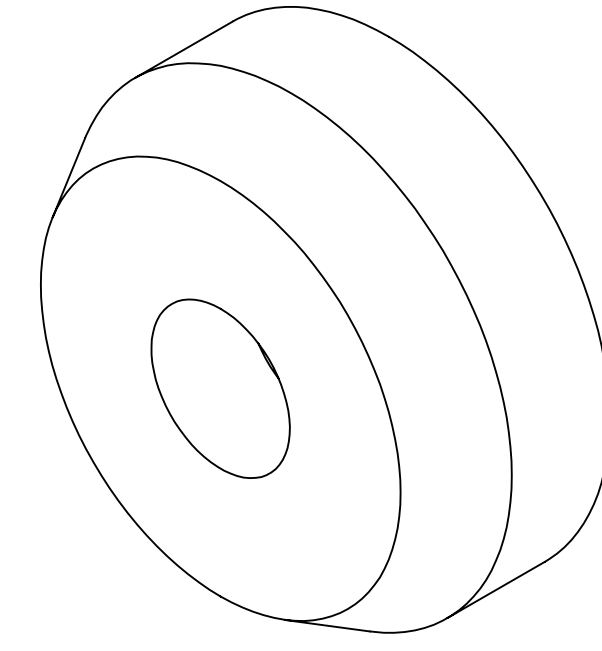
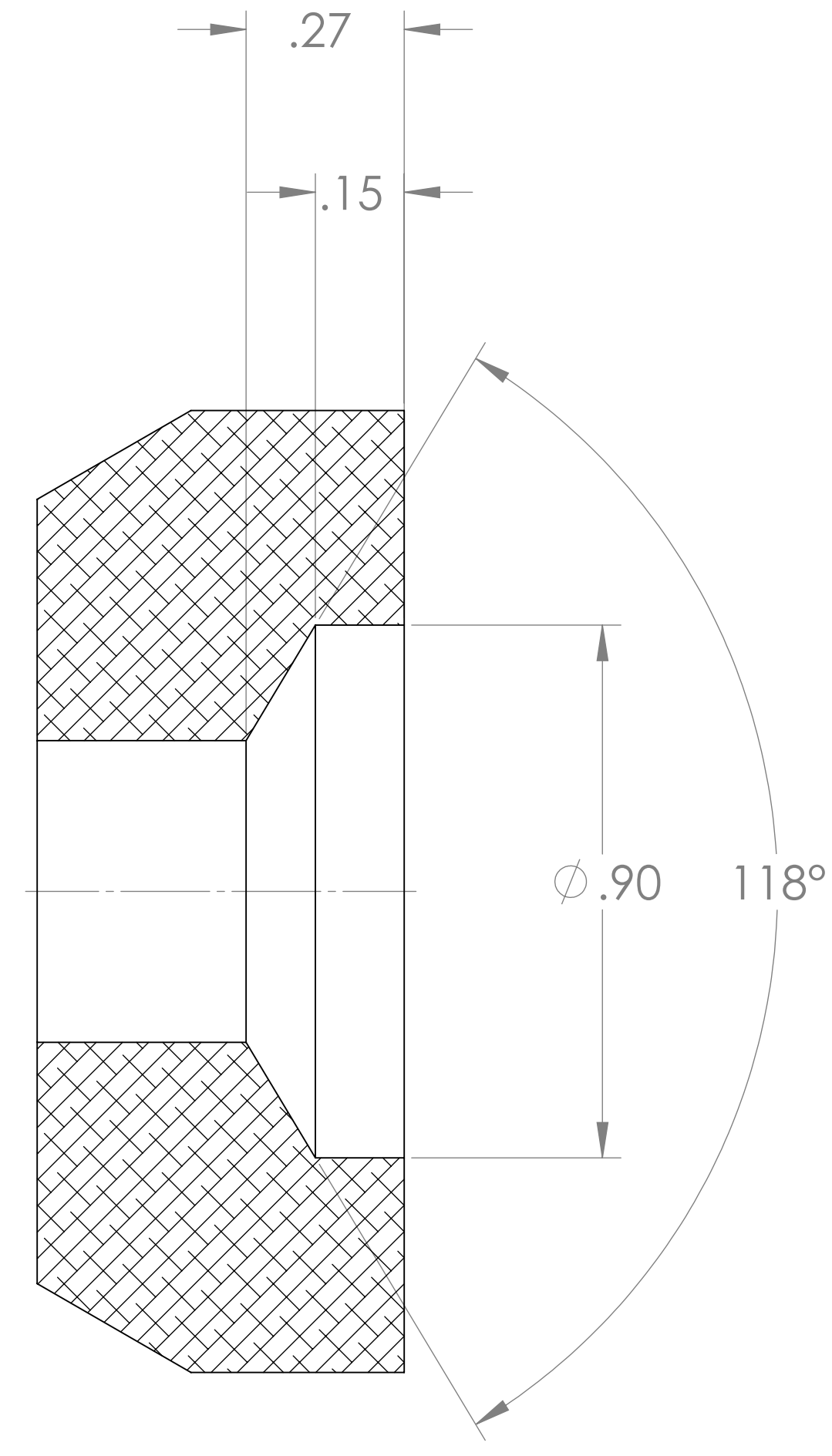
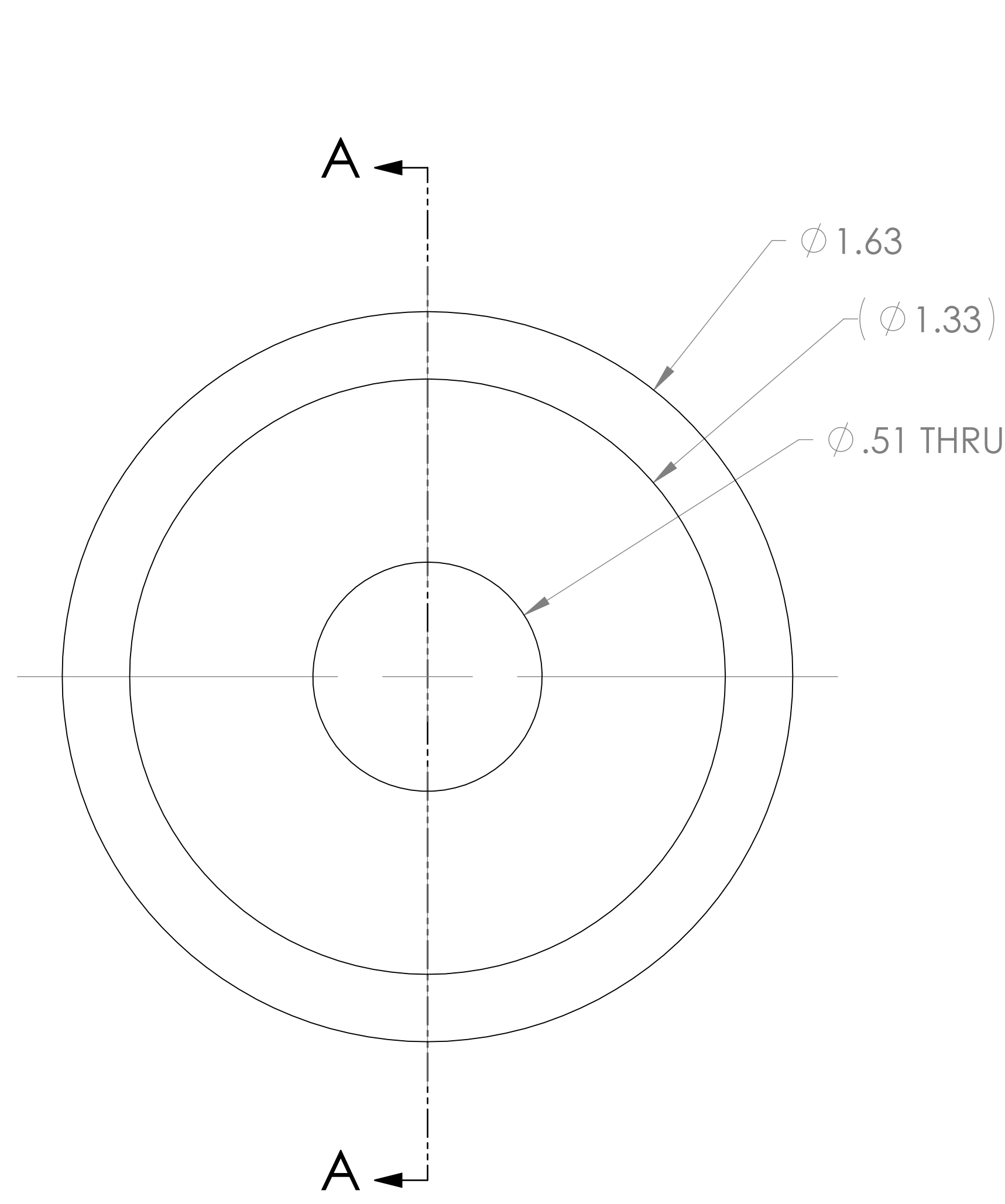


NOTES CONTINUED:
 ⑤ SCRIBE, ENGRAVE, OR MECHANICALLY STAMP (NO INKS OR DYES) DRAWING PART NUMBER, REVISION (AND VARIANT OR TYPE IF APPLICABLE) ON NOTED SURFACE OF PART FOLLOWED ON THE NEXT LINE WITH A THREE DIGIT SERIAL NUMBER. SERIAL NUMBERS START AT 001 FOR THE FIRST ARTICLE AND PROCEED CONSECUTIVELY. USE MINIMUM 0.12" HIGH CHARACTERS, UNLESS THE SIZE OF THE PART DICTATES SMALLER CHARACTERS. A VIBRATORY TOOL MAY BE USED. EXAMPLE: DXXXXXX-VY, TYPE-XX, S/N XXX

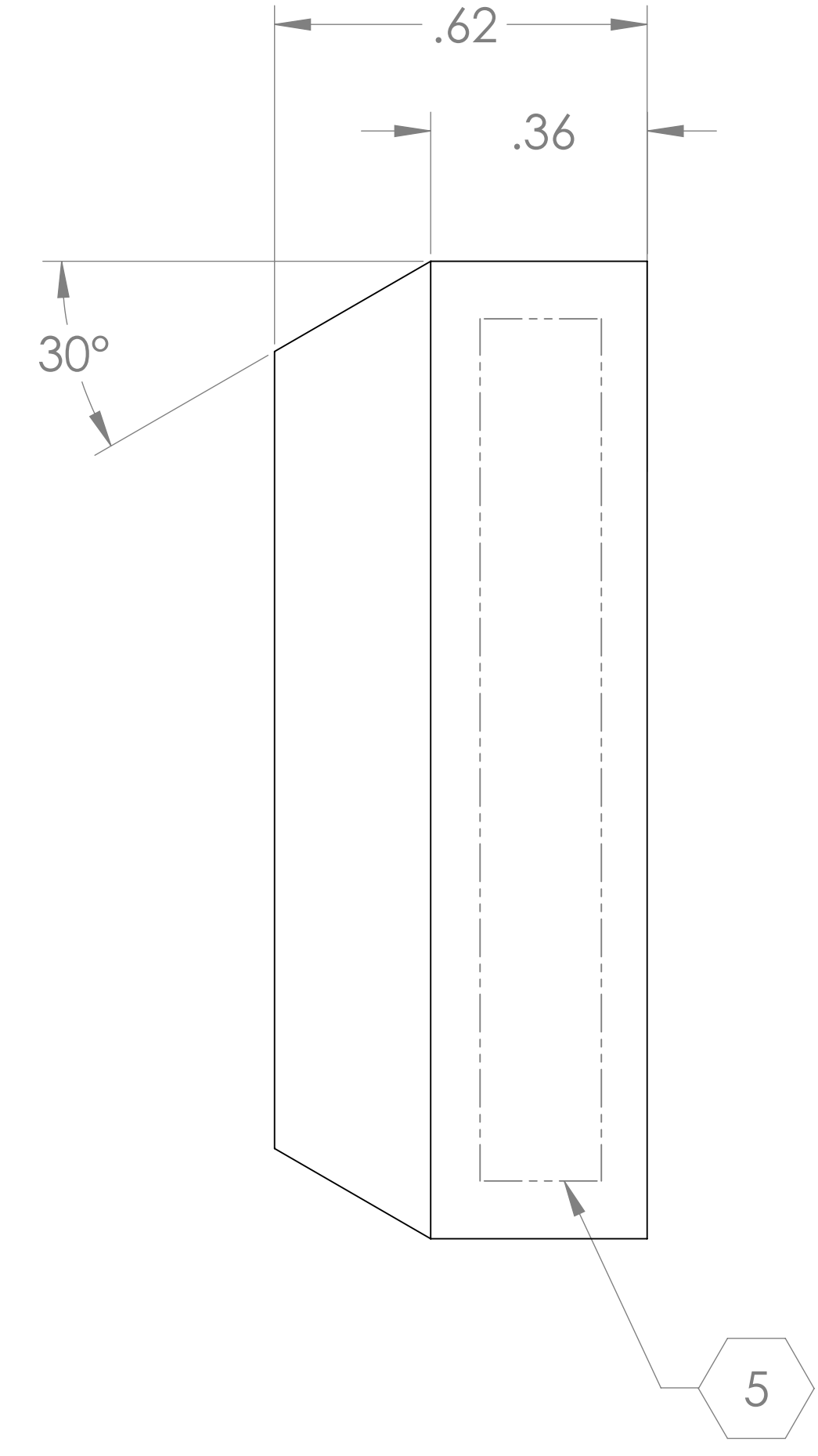
REV.	DATE	DCN #	DRAWING TREE #
v1	04 JUNE 2010	E1000182-v1	-
-	-	-	-
-	-	-	-



ISO VIEW



SECTION A-A



NOTES AND TOLERANCES: (UNLESS OTHERWISE SPECIFIED)	
DIMENSIONS ARE IN INCHES	
TOLERANCES: .XX ± .01 .XXX ± .005	
ANGULAR ± 1.0°	
MATERIAL	FINISH
304 SSSL	63 μinch

LIGO CALIFORNIA INSTITUTE OF TECHNOLOGY
 MASSACHUSETTS INSTITUTE OF TECHNOLOGY

SYSTEM: ADVANCED LIGO
 NEXT ASSY: D1000308

PART NAME		DESIGNER		DATE		SIZE		DWG. NO.		REV.	
ALIGO AOS WASHER		C. CONLEY		07 MAR 2010		D		D1000517		v1	
DRAFTER		N. KILPATRICK		04 JUNE 2010		SCALE: 4:1		PROJECTION:		SHEET 1 OF 1	
CHECKER		APPROVAL									

D1000517.dwg AOS Washer PART PDM REV: X.008 DRAWING PDM REV: K.014