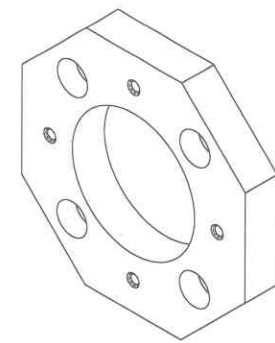
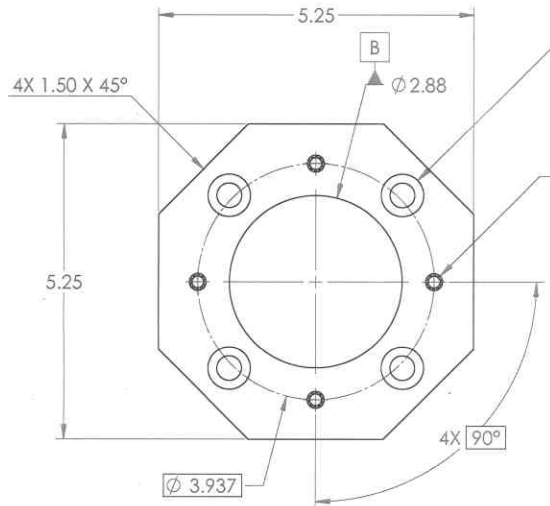


NOTES CONTINUED:
 ☐ SCRIBE, ENGRAVE, OR MECHANICALLY STAMP (NO INKS OR DYES) DRAWING PART NUMBER, REVISION (AND VARIANT OR TYPE # APPLICABLE) ON NOTED SURFACE OF PART FOLLOWED ON THE NEXT LINE WITH A THREE DIGIT SERIAL NUMBER. SERIAL NUMBERS START AT 001 FOR THE FIRST ARTICLE AND PROCEED CONSECUTIVELY. USE MINIMUM 1/16" HIGH CHARACTERS. UNLESS THE SIZE OF THE PART DICTATES SMALLER CHARACTERS. A VIBRATORY TOOL MAY BE USED.
 EXAMPLE: DXXXXXX-VY, TYPE-XX, S/N XXX

REV.	DATE	DCH #	DRAWING TREE #
v1	03 JUNE 2010	E1000182-V1	-
-	-	-	-
-	-	-	-

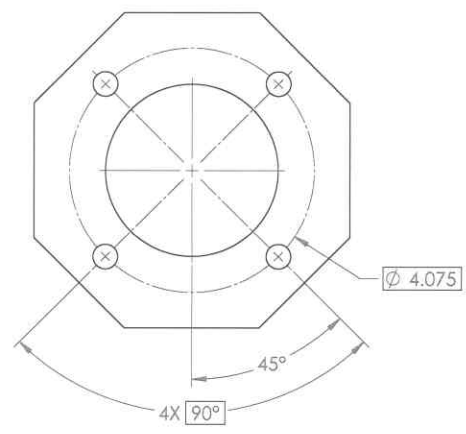
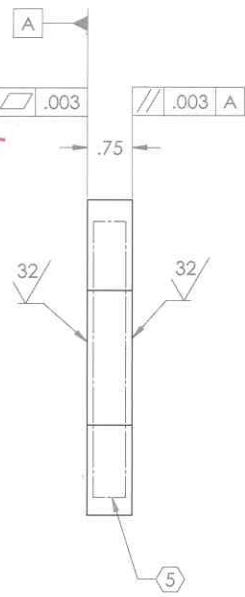


ISO VIEW



4X ϕ .413 THRU
 ϕ .709 \checkmark .48 \checkmark .719 \checkmark 14
 $\oplus \phi$.013 (M) A B (S)

4X M6X1.0 - 6H \checkmark .30
 .1mm OVERSIZE
 \checkmark ϕ .283 X 90°, NEAR SIDE
 $\oplus \phi$.013 A B (S)



D1000509-AOS-0001-Rev.01 TX Mounting Plate - AOS (FOR REV. 0.001) REV. 0002

NOTES AND TOLERANCES (UNLESS OTHERWISE SPECIFIED)
 1. INTERPRET DRAWING PER ASME Y14.5-1994.
 2. REMOVE ALL SHARP EDGES, R.02 MIN.
 3. DO NOT SCALE FROM DRAWING.
 4. ALL MACHINING FLUIDS MUST BE FULLY SYNTHETIC, FULLY WATER SOLUBLE AND FREE OF SULFUR, SILICONE, AND CHLORINE.

DIMENSIONS ARE IN INCHES
 TOLERANCES:
 .XX ± .01
 .XXX ± .005
 ANGULAR ± 1.0°

NOTES AND TOLERANCES (UNLESS OTHERWISE SPECIFIED)
 1. INTERPRET DRAWING PER ASME Y14.5-1994.
 2. REMOVE ALL SHARP EDGES, R.02 MIN.
 3. DO NOT SCALE FROM DRAWING.
 4. ALL MACHINING FLUIDS MUST BE FULLY SYNTHETIC, FULLY WATER SOLUBLE AND FREE OF SULFUR, SILICONE, AND CHLORINE.

MATERIAL: 304 S316L
 FINISH: 63 μ inch
 NEXT ASSY: D1000308

LIGO CALIFORNIA INSTITUTE OF TECHNOLOGY
 MASSACHUSETTS INSTITUTE OF TECHNOLOGY

PART NAME: ALIGO AOS OPLEV TX MOUNTING PLATE
 DESIGNER: E. CONLEY
 DRAFTER: N. KEPATKICE
 CHECKER:
 APPROVAL:
 DATE: 03 JUN 2010
 SIZE: D
 DWG. NO.: D1000509
 SCALE: 1:1
 PROJECTION:

REV. v1 v2

SHEET 1 OF 1