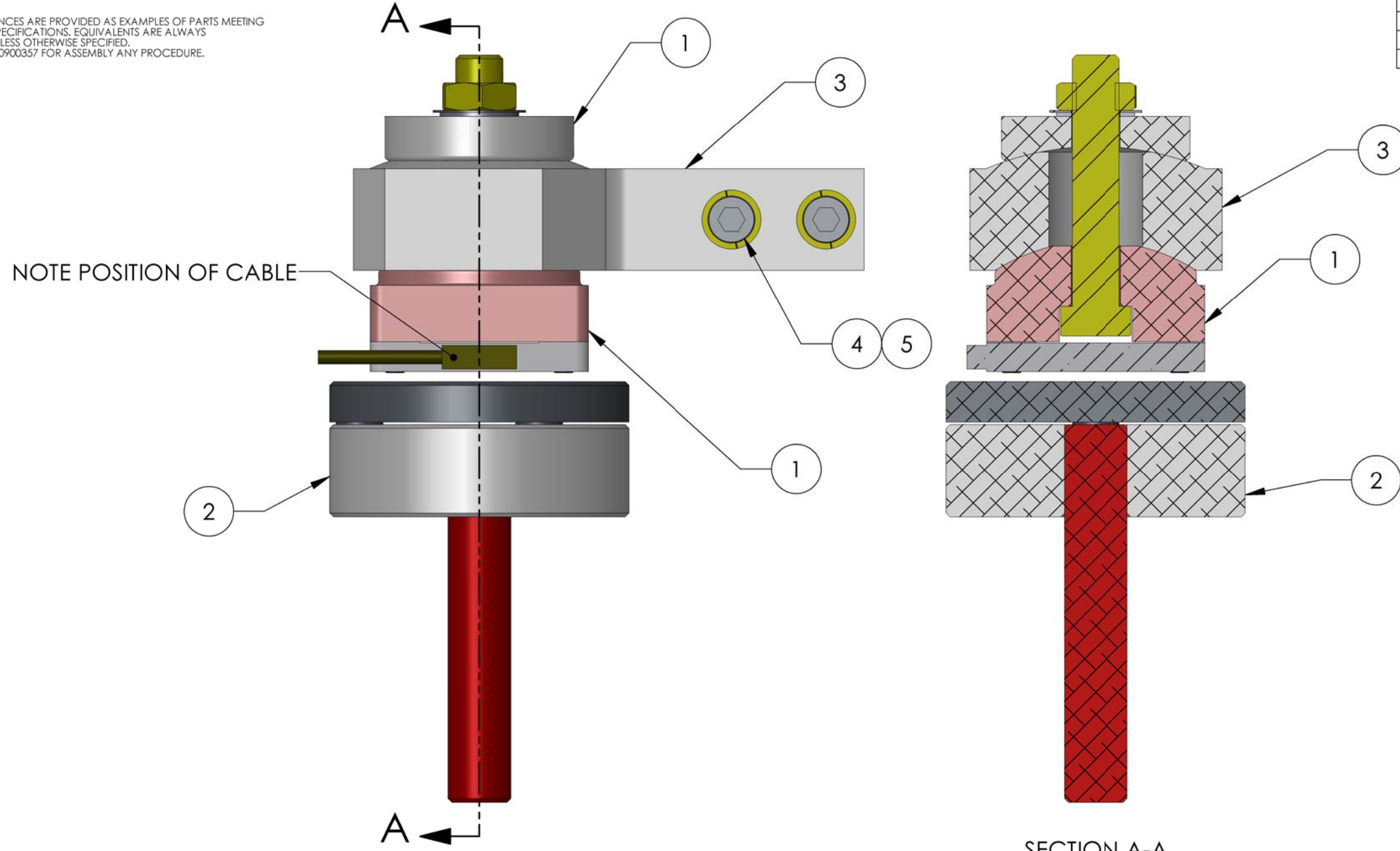


D1000478 SENSOR ASSEMBLY HORIZONTAL, aLIGO BSC ISI, PART PDM REV: X-027, DRAWING PDM REV: X-002

NOTES CONTINUED:
 5. VENDOR REFERENCES ARE PROVIDED AS EXAMPLES OF PARTS MEETING ALL REQUIRED SPECIFICATIONS. EQUIVALENTS ARE ALWAYS ACCEPTABLE UNLESS OTHERWISE SPECIFIED.
 6. REFER TO LIGO E0900357 FOR ASSEMBLY ANY PROCEDURE.

REV.	DATE	DCN #	DRAWING TREE #
v1	01 Mar. 2010	E1000049	E1000025



SECTION A-A

5	UC_COMPONENTS_WFV-25	Vented Washer, .255 ID X .468 OD X .032 THK #1/4	18-8 SSTL	2
4	HOLOKROME_78066	SHCS, 1/4"-20x1.5"	18-8 SS	2
3	D0902356	DISPLACEMENT SENSOR MOUNT, STAGE 0-1, aLIGO BSC ISI	6061-T6 Al	1
2	D1000468	POSITION SENSOR TARGET ASSEMBLY, aLIGO BSC ISI	SEE BOM	1
1	D1000467	POSITION SENSOR ASSEMBLY, aLIGO BSC ISI	SEE BOM	1
ITEM NO.	PART NUMBER	DESCRIPTION	MATERIAL	REQ

PARTS LIST

DIMENSIONS ARE IN INCHES TOLERANCES: .XX ±.015 .XXX ±.005 ANGULAR ±.5°		NOTES AND TOLERANCES: (UNLESS OTHERWISE SPECIFIED) 1. INTERPRET DRAWING PER ASME Y14.5-1994. 2. BREAK ALL EDGES AND CORNERS .03 X 45°. 3. DO NOT SCALE FROM DRAWING. 4. ALL MACHINING FLUIDS MUST BE FULLY SYNTHETIC, FULLY WATER SOLUBLE AND FREE OF SULFUR, SILICONE, AND CHLORINE.		LIGO CALIFORNIA INSTITUTE OF TECHNOLOGY MASSACHUSETTS INSTITUTE OF TECHNOLOGY		PART NAME SENSOR ASSEMBLY HORIZONTAL, aLIGO BSC ISI						
MATERIAL		FINISH		SYSTEM		SUB-SYSTEM		DESIGNER	DATE	SIZE	DWG. NO.	REV.
N/A		N/A μinch		ADVANCED LIGO		SEI		S.BARNUM	01 Mar. 2010	B	D1000478	v1
				NEXT ASSY				DRAFTER	DATE	SCALE	PROJECTION	SHEET 1 OF 1
				D0901102				F.MATICHARD	01 Mar. 2010	1:1		
								K.MASON	01 Mar. 2010			