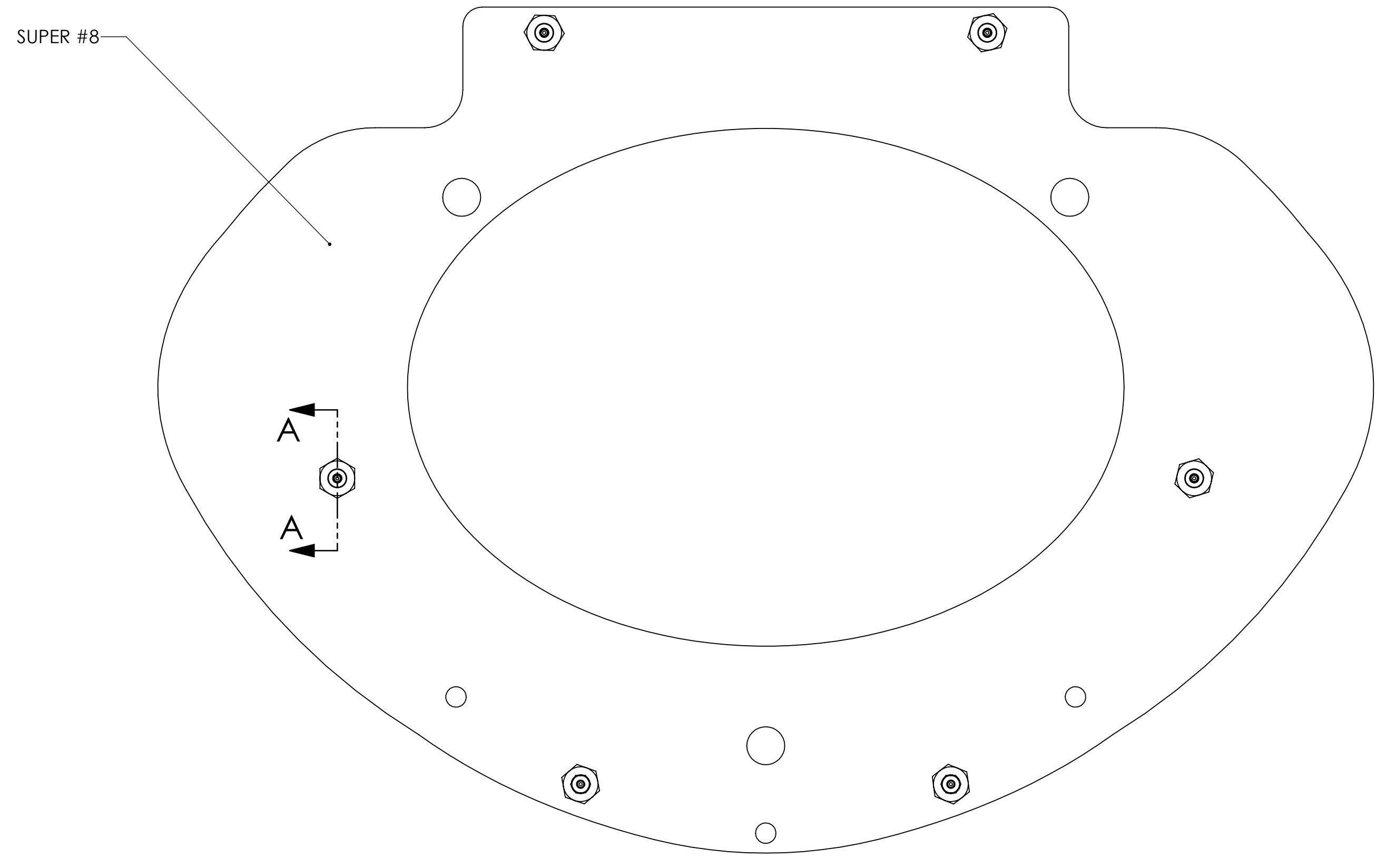
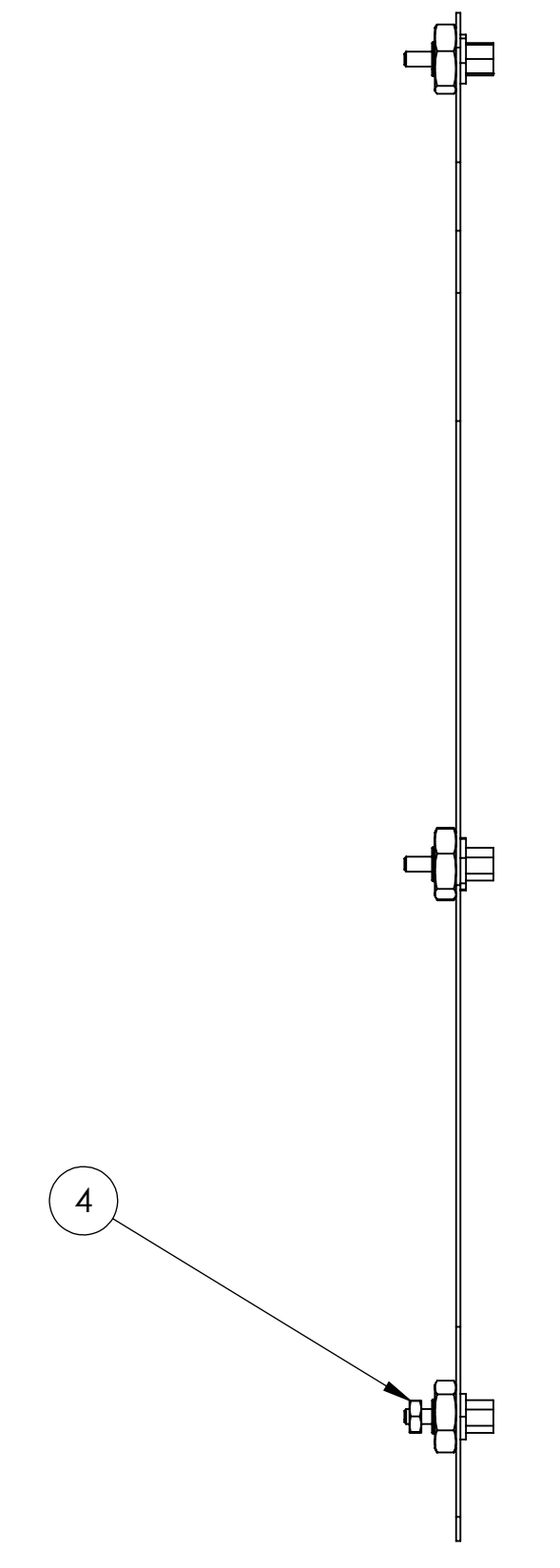


NOTES CONTINUED:
 ⑤

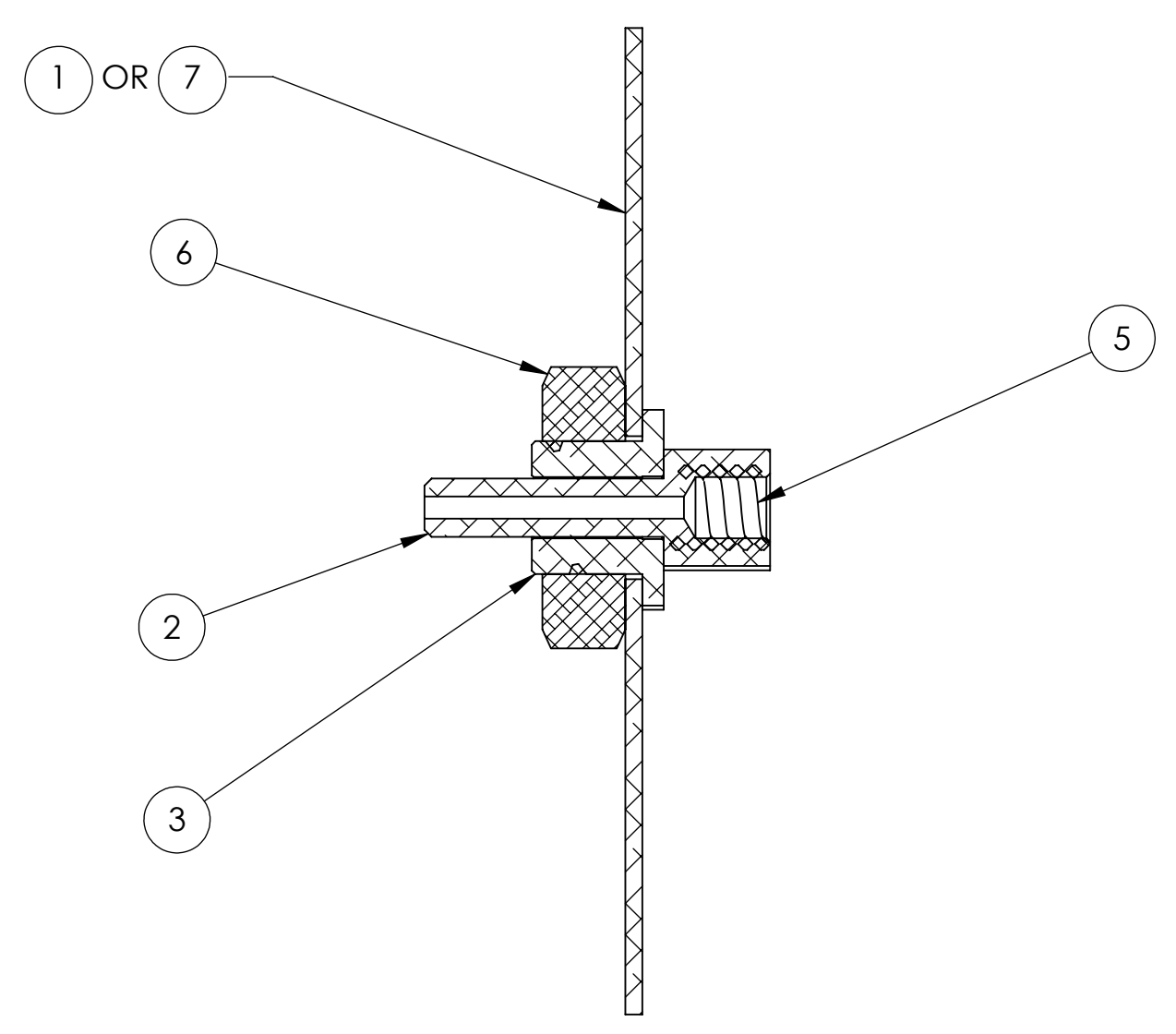
REV.	DATE	DCN #	DRAWING TREE #
v1	20 OCT 2011	E1000406	
-	-	-	-
-	-	-	-



FRONT VIEW



SIDE VIEW



SECTION A-A
 SCALE 2:1

NOTES AND TOLERANCES: (UNLESS OTHERWISE SPECIFIED)	
1. INTERPRET DRAWING PER ASME Y14.5-1994. 2. REMOVE ALL SHARP EDGES, .005-.015, FOR MACHINED PARTS. ROUND ALL EDGES APPROXIMATELY R.02 FOR SHEET METAL PARTS. 3. DO NOT SCALE FROM DRAWING. 4. ALL MACHINING FLUIDS MUST BE FULLY SYNTHETIC, FULLY WATER SOLUBLE AND FREE OF SULFUR, SILICONE, AND CHLORINE.	
DIMENSIONS ARE IN INCHES TOLERANCES: INCHES .XX ±.02 .XXX ±.005 ANGULAR ± .5	MATERIAL N/A FINISH N/A μinch

CALIFORNIA INSTITUTE OF TECHNOLOGY
MASSACHUSETTS INSTITUTE OF TECHNOLOGY

SYSTEM: **ADVANCED LIGO** SUB-SYSTEM: **AOS**

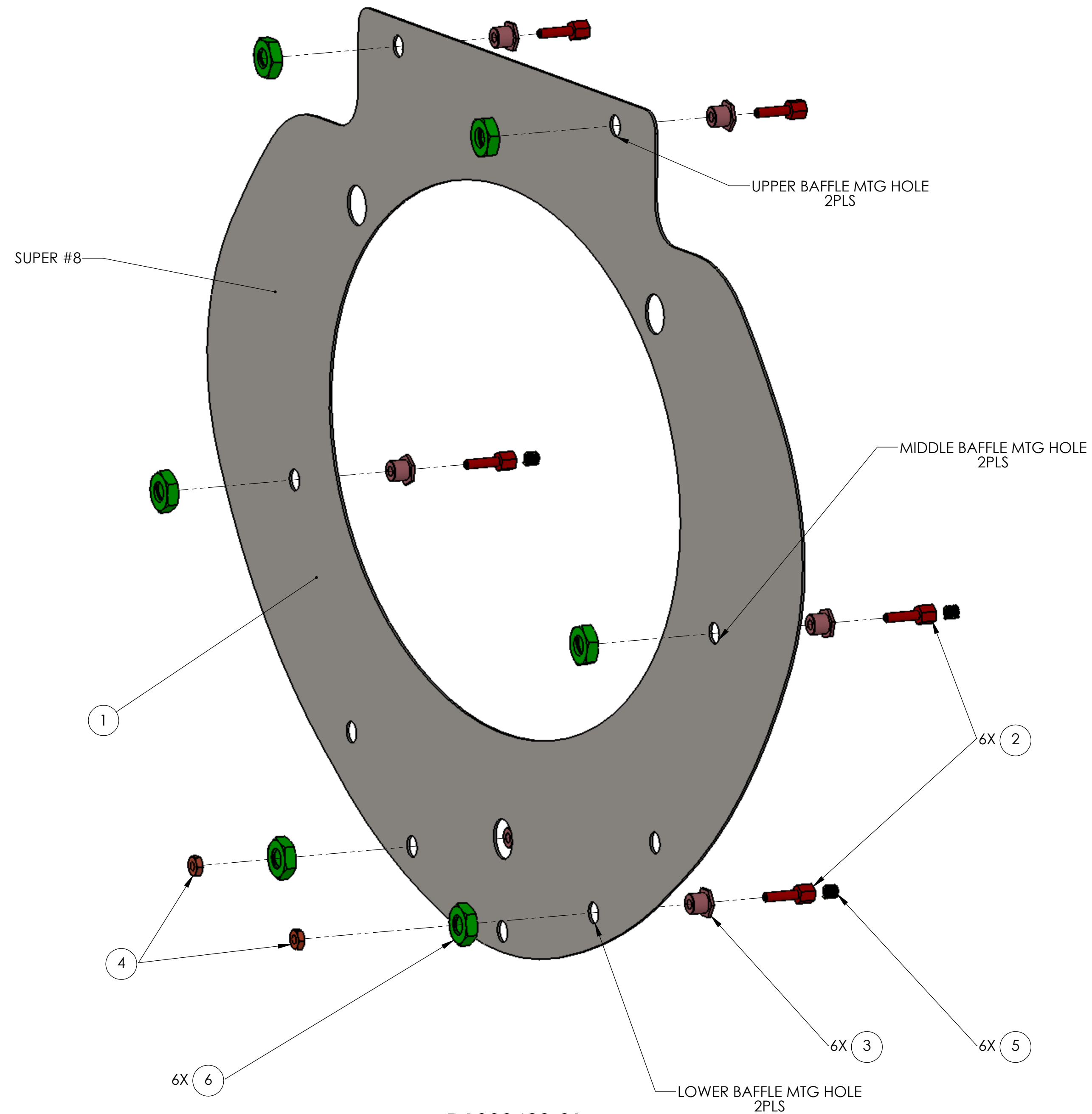
NEXT ASSY: **D0900392**

PART NAME				SIZE		DWG. NO.		REV.
SLC FM ELLIPTICAL BAFFLE ASSY				D		D1000429		v1
DESIGNER	N.Nguyen	10 Jul 2010	CHECKER	M. SMITH	20 SEP 2010	APPROVAL	C. Torrie	30 SEP 2010
SCALE: 1:2				PROJECTION:		SHEET 1 OF 2		

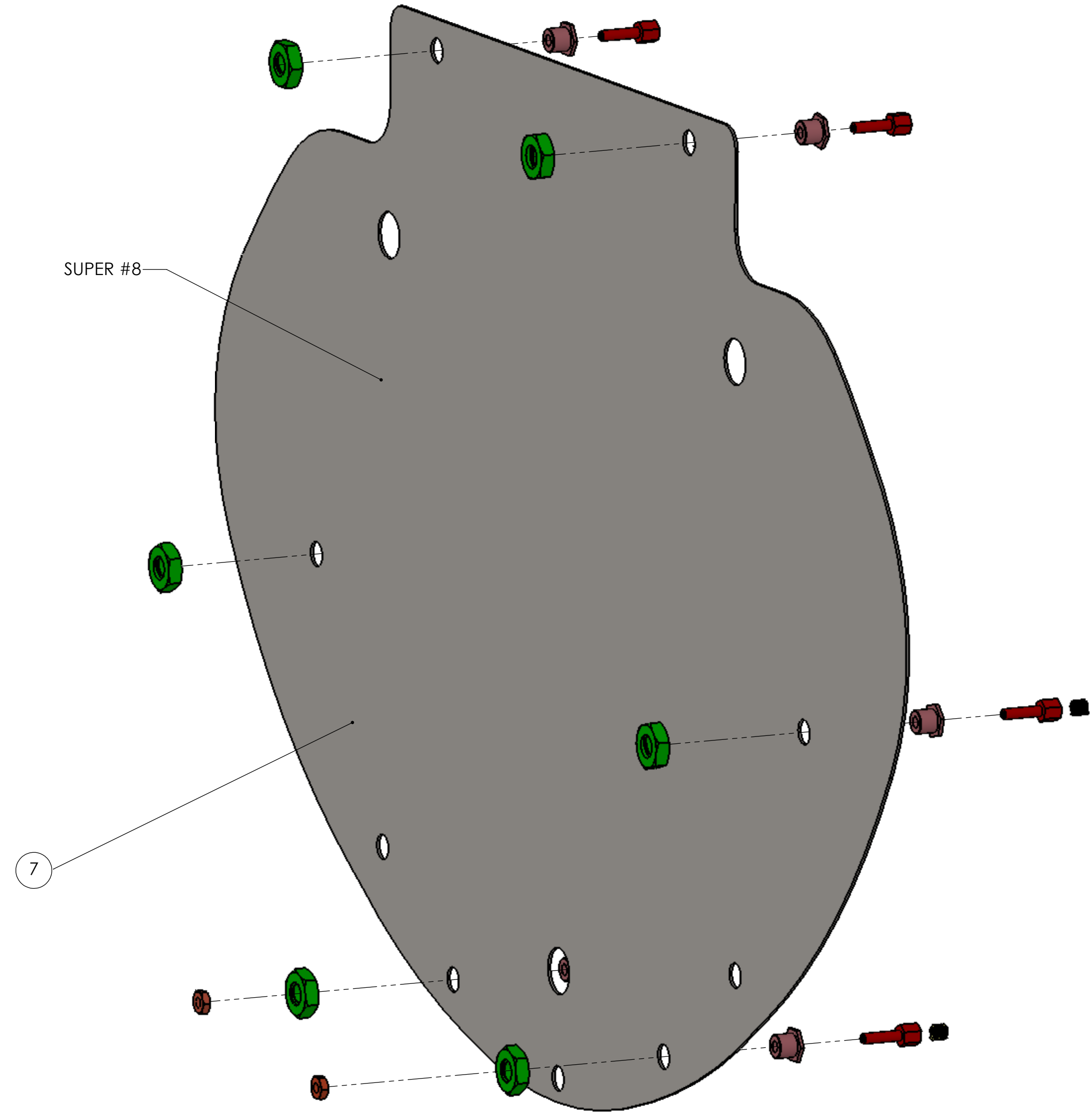
D1000429_Audiogo_AOS_SLC FM Elliptical Baffle Assy.PART PDM REV: X-004.DRAWING PDM REV: X-024

INSTALLATION INSTRUCTIONS:

1. INSTALL ITEM 3, HELICOIL, INTO ITEM 2, ADAPTER ACCORDING TO EMHART HELI-COIL PRODUCT CATALOG. 6 PLS.
2. INSERT ITEM 4, SPACER, THRU THE .410 DIA HOLE ON ITEM 1 (OR ITEM 7) AND FASTEN WITH ITEM 5, NUT 3/8-16. 6 PLACES.
3. FASTEN ITEM 1 (OR ITEM 7), FM ELLIP BAFFLE PLATE, TO P/N D080006, BS LOWER STRUCTURE, WITH ITEM 2, ADAPTER, AT THE MIDDLE BAFFLE, 2 PLS.
4. FASTEN ITEM 1 (OR ITEM 7), FM ELLIP BAFFLE PLATE, TO P/N D080008, BS LOWER STRUCTURE, WITH ITEM 2, ADAPTER, AT THE UPPER BAFFLE, 2 PLS.
5. FASTEN ITEM 1 (OR ITEM 7), FM ELLIP BAFFLE PLATE, TO P/N D080006, BS LOWER STRUCTURE, WITH ITEM 2, ADAPTER, AND ITEM 6, NUT #8-32, AT THE LOWER BAFFLE, 2 PLS.



D1000429-01
AS SHOWN



D1000429-02
ONE ARM TEST
AS SHOWN

ITEM NO.	PART NUMBER	DESCRIPTION	MATERIAL	D1000429-01	D1000429-02	SPARE	TOTAL
7	D1101925	FM ELLIPTICAL-ONE ARM TEST PLATE	18 GAUGE 304 SSSL	0	1	0	0
6	N-3816-A	HEX NUT #3/8-16	Ag-PLATED 18-8 SSSL	6	6	2	14
5	1185-2EN 164	HELI-COIL INSERT #8-32X 1.5 DIA	NITRONIC 60	6	6	2	14
4	N-832-A	HEX NUT, #8-32	Ag-PLATED 18-8 SSSL	2	2	2	6
3	D1001061	SLC FM ELLIPTICAL BAFFLE SPACER	304 SSSL	6	6	2	14
2	D1001049	SLC FM ELLIPTICAL STANDOFF ADAPTER #8-32	304 SSSL	6	6	2	14
1	D1000883	SLC FM ELLIPTICAL BAFFLE PLATE	18 GAUGE 304 SSSL	1	0	0	0
PARTS LIST							

LIGO CALIFORNIA INSTITUTE OF TECHNOLOGY
MASSACHUSETTS INSTITUTE OF TECHNOLOGY

SIZE DWG. NO. **D1000429** REV. **v1**

SCALE: 1:4 PROJECTION: SHEET 2 OF 2

D1000429_AudiGO_ACS_SLC FM Elliptical Baffle Assy. PART PDM REV: X-204 DRAWING PDM REV: X-024