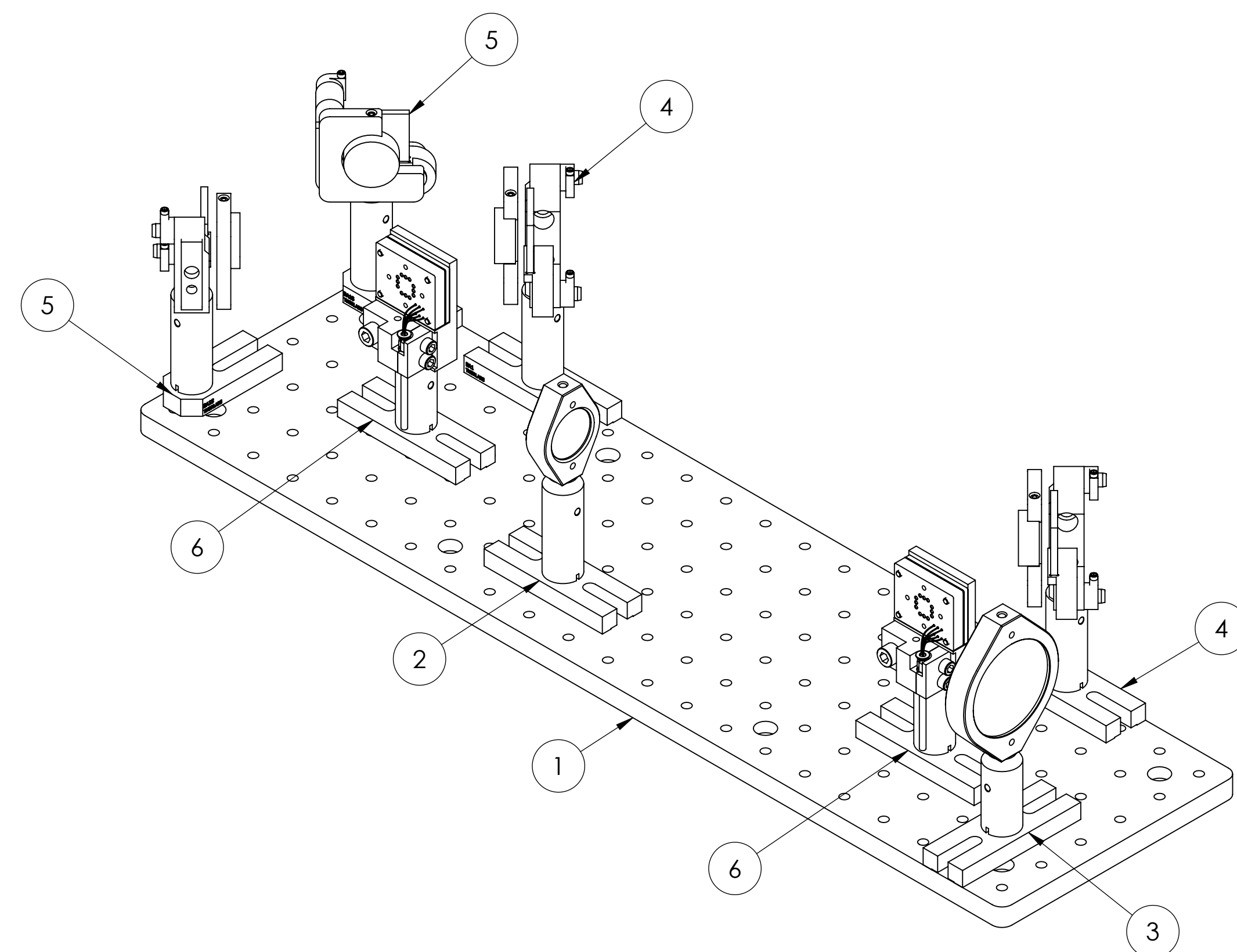


REV.	DATE	DCN #	DRAWING TREE #
v4	21 MAY 2014	-	-
-	-	-	-
-	-	-	-

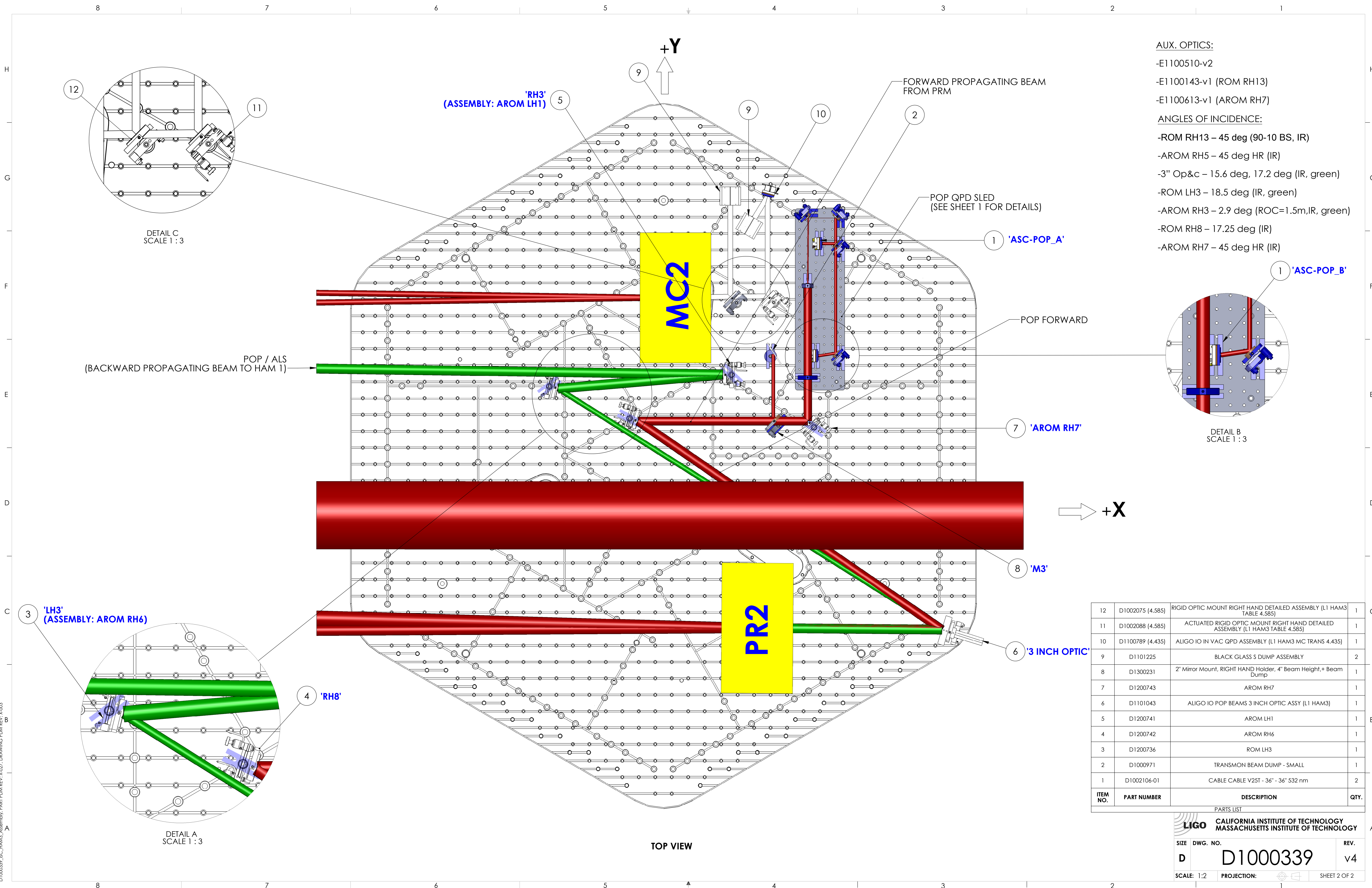


ISO VIEW
(REFER TO SHEET 2, FOR HAM3 ISC BLOCK DIAGRAM)

ITEM NO.	PART NUMBER	DESCRIPTION	MATERIAL	QTY.
6	D1002106-01	CABLE CABLE V25T - 36" - 36" 532 nm	N/A	2
5		GQPD/IQPD 1" MIRROR MOUNT LEFT HAND ASSEMBLY	N/A	2
4		GQPD/IQPD 1" MIRROR MOUNT LEFT HAND ASSEMBLY	N/A	2
3		GQPD/IQPD 2" LENS MOUNT ASSY	N/A	1
2		GQPD/IQPD 2" LENS MOUNT ASSY	N/A	1
1	D1002041	ISC QPD SLED	6061-T6 Al	1

NOTES AND TOLERANCES: (UNLESS OTHERWISE SPECIFIED)		PARTS LIST	
DIMENSIONS ARE IN INCHES		CALIFORNIA INSTITUTE OF TECHNOLOGY MASSACHUSETTS INSTITUTE OF TECHNOLOGY	
		ISC_HAM3_Assembly	
		SYSTEM ADVANCED LIGO	SUB-SYSTEM ISC
		DESIGNER J.FISHNER	DATE 17 FEB 2010
		DRAFTER J.FISHNER	DATE 24 FEB 2010
		CHECKER SEE DCC	SCALE D
		APPROVAL SEE DCC	SCALE 1:2
		MATERIAL N/A	FINISH N/A μinch
		NEXT ASSY D0900520, D0901094	SIZE D
			DWG. NO. D1000339
			PROJECTION:
			REV. v4
			SHEET 1 OF 2

D1000339_ISC_HAM3_Assembly; PART PDM REV: X.027; DRAWING PDM REV: X.003



- AUX. OPTICS:**
- E1100510-v2
 - E1100143-v1 (ROM RH13)
 - E1100613-v1 (AROM RH7)
- ANGLES OF INCIDENCE:**
- ROM RH13 – 45 deg (90-10 BS, IR)
 - AROM RH5 – 45 deg HR (IR)
 - 3" Op&c – 15.6 deg, 17.2 deg (IR, green)
 - ROM LH3 – 18.5 deg (IR, green)
 - AROM RH3 – 2.9 deg (ROC=1.5m, IR, green)
 - ROM RH8 – 17.25 deg (IR)
 - AROM RH7 – 45 deg HR (IR)

ITEM NO.	PART NUMBER	DESCRIPTION	QTY.
12	D1002075 (4.585)	RIGID OPTIC MOUNT RIGHT HAND DETAILED ASSEMBLY (L1 HAM3 TABLE 4.585)	1
11	D1002088 (4.585)	ACTUATED RIGID OPTIC MOUNT RIGHT HAND DETAILED ASSEMBLY (L1 HAM3 TABLE 4.585)	1
10	D1100789 (4.435)	ALIGO IO IN VAC QPD ASSEMBLY (L1 HAM3 MC TRANS 4.435)	1
9	D11101225	BLACK GLASS S DUMP ASSEMBLY	2
8	D1300231	2" Mirror Mount, RIGHT HAND Holder, 4" Beam Height, + Beam Dump	1
7	D1200743	AROM RH7	1
6	D11101043	ALIGO IO POP BEAMS 3 INCH OPTIC ASSY (L1 HAM3)	1
5	D1200741	AROM LH1	1
4	D1200742	AROM RH6	1
3	D1200736	ROM LH3	1
2	D1000971	TRANSMON BEAM DUMP - SMALL	1
1	D1002106-01	CABLE CABLE V25T - 36" - 36" 532 nm	2

LIGO CALIFORNIA INSTITUTE OF TECHNOLOGY
MASSACHUSETTS INSTITUTE OF TECHNOLOGY

SIZE DWG. NO. **D1000339** REV. **v4**

SCALE: 1:2 PROJECTION: SHEET 2 OF 2

D1000339_ISC_HAM3_Assembly_PART_PDM_REV_X.027_DRAWING_PDM_REV_X.003