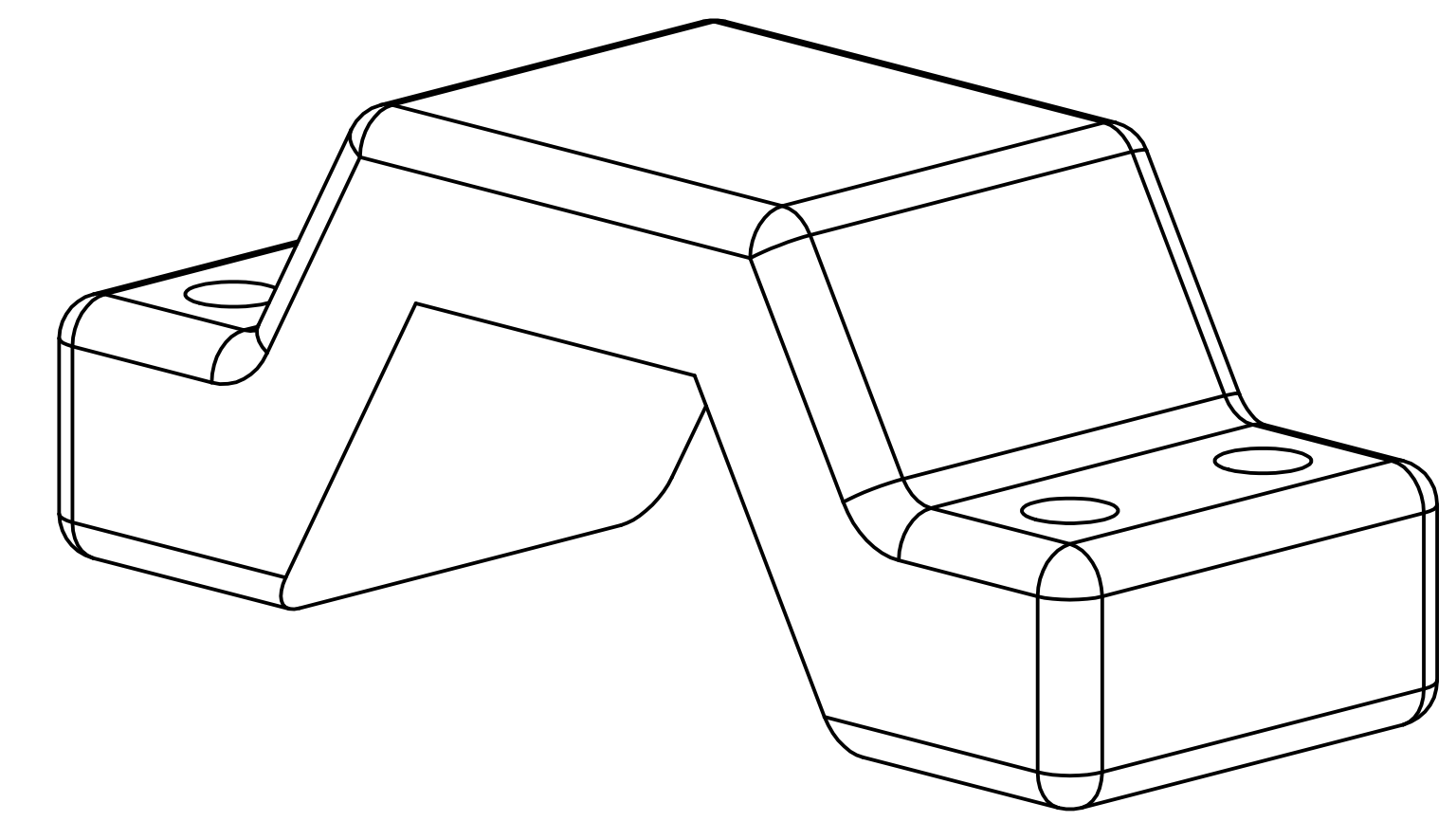
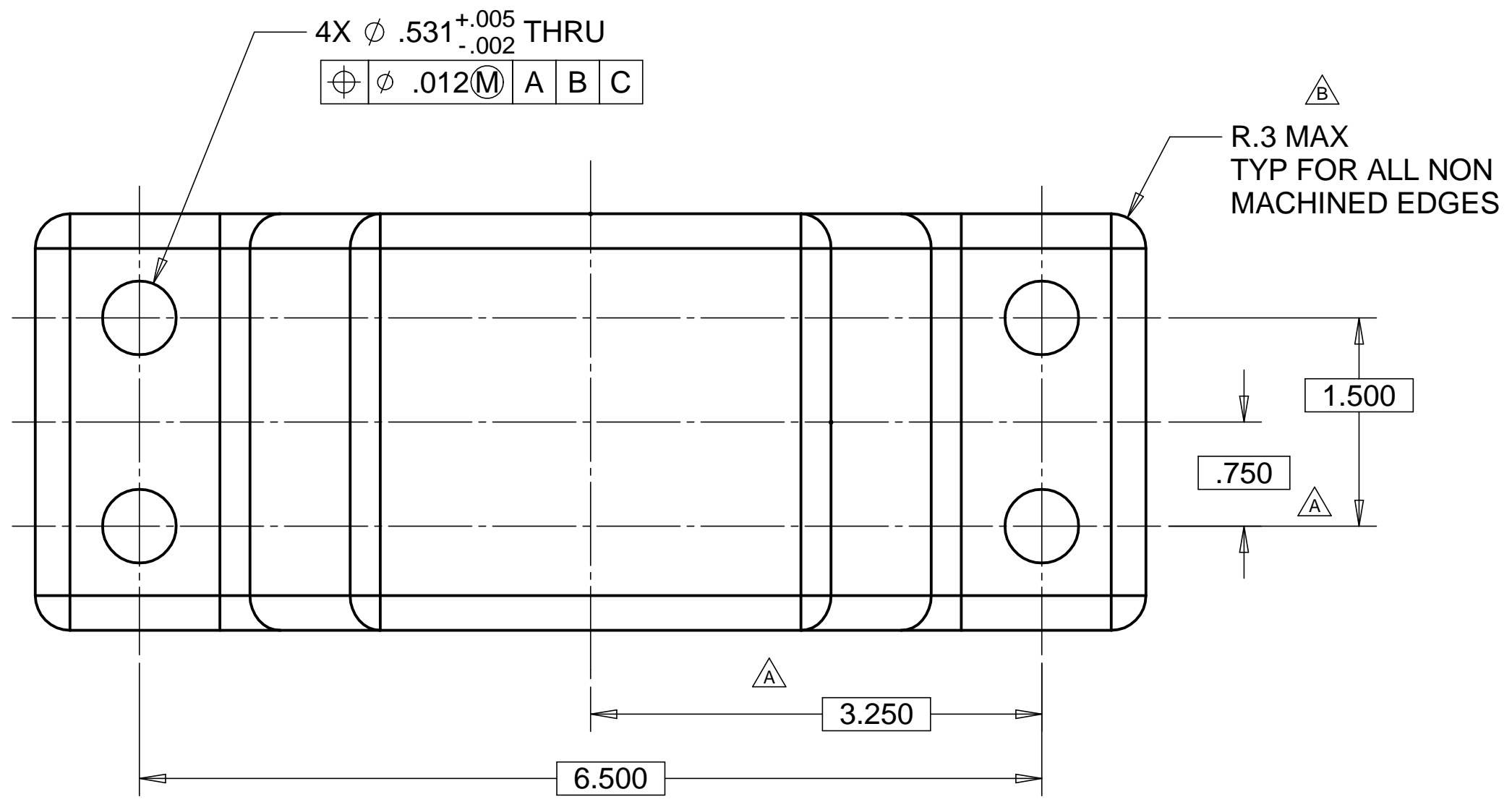


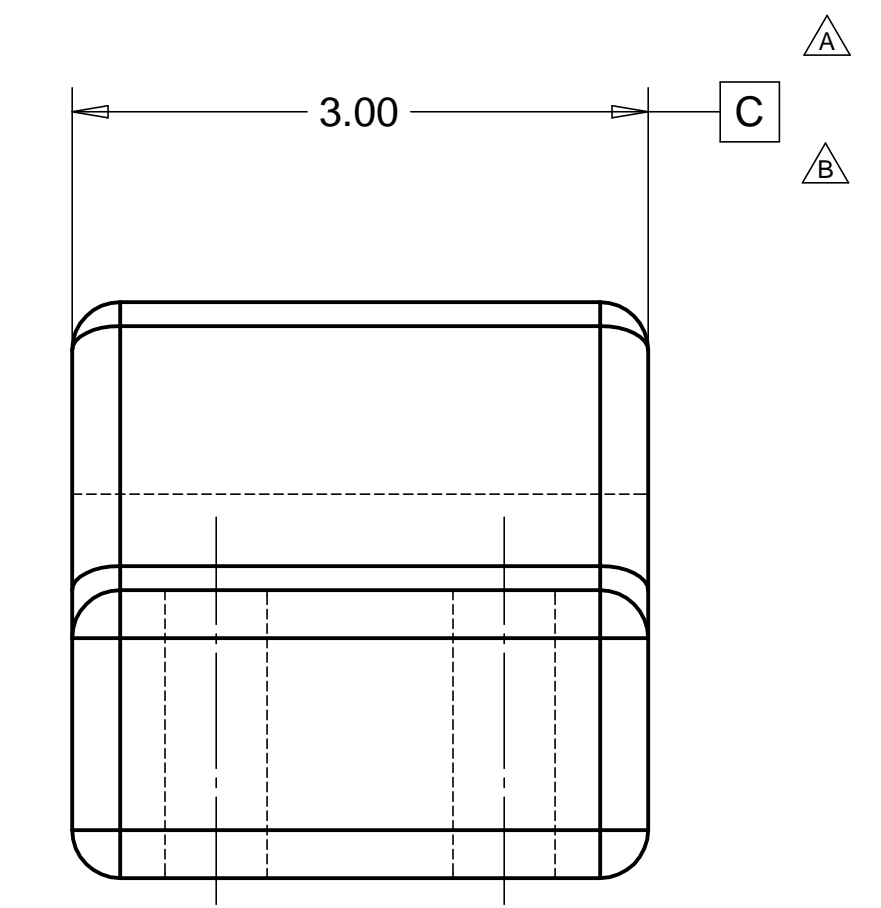
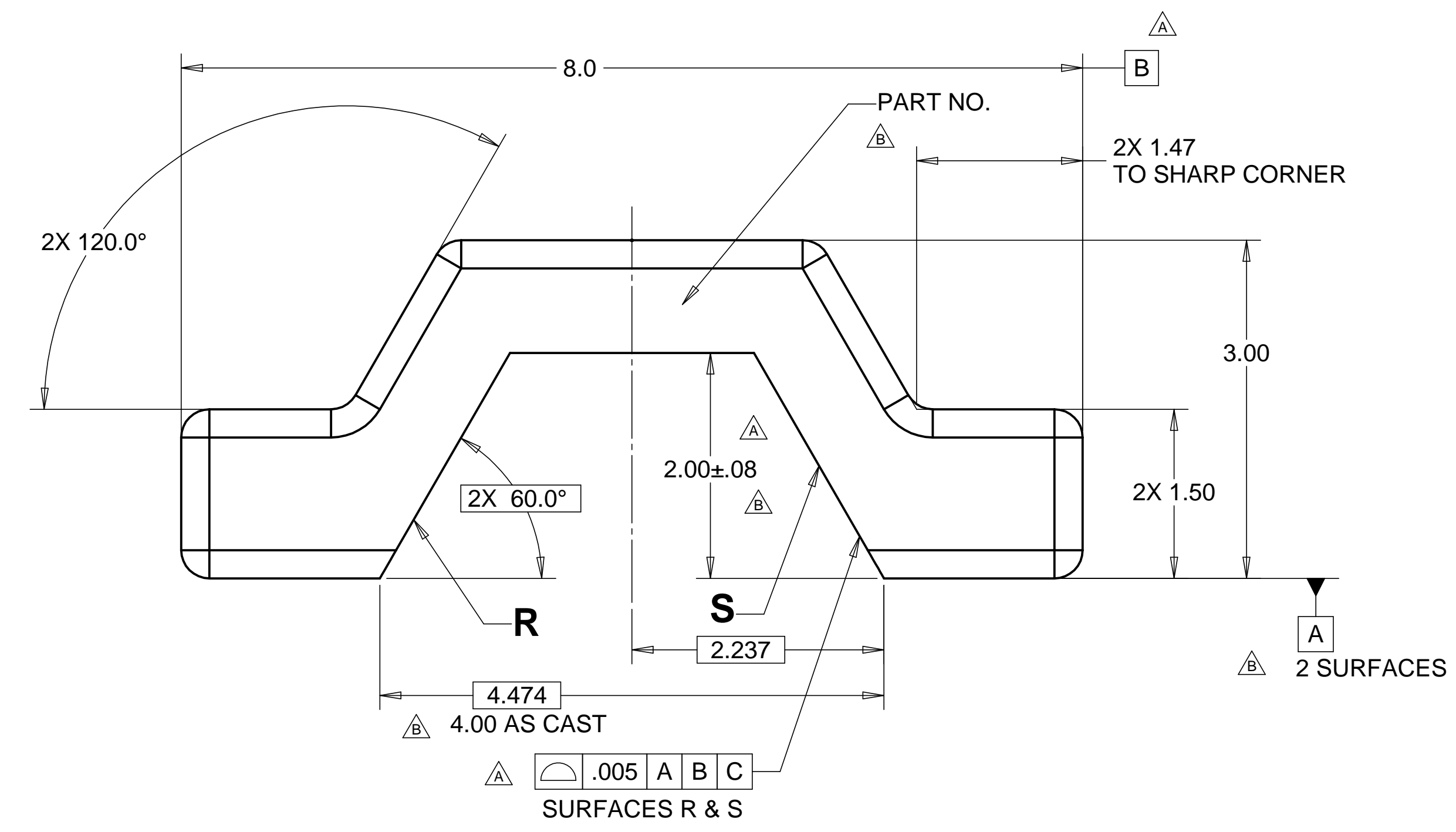
8 7 6 5 4 3 2 1

REVISIONS			
REV.	DESCRIPTION	DATE	APPROVED
A	SEE ECN# D972614-A FOR CHANGE LIST	11-14-97	T. THOMPSON
B	SEE ECN# D972614-B FOR CHANGE LIST	12-01-97	T. THOMPSON

D



C



B

MATL: ALUM. A356-T6
 WEIGHT: 3.2 lbs.

NOTES: UNLESS OTHERWISE SPECIFIED

- ALL DIMENSIONS IN INCHES
- DIMENSIONS AND TOLERANCING PER ASME Y14.5M-1994
- SURFACE TEXTURE PER ANSI/ASME B 46.1-1985
- REMOVE ALL BURRS AND BREAK SHARP EDGES TO A MAXIMUM OF .015
- ALL INSIDE CORNERS TO BE .015 RADIUS MAX
- COUNTERSINK 82 DEGREES ALL TAPPED HOLES TO MAJOR DIAMETER
- COUNTERSINK 82 DEGREES APPROXIMATELY .015 DEEP ALL DRILLED HOLES
- PARTS TO BE THOROUGHLY CLEANED TO REMOVE ALL OIL, GREASE, DIRT AND CHIPS
- PART NUMBER (DRAWING NO. PLUS DASH NO. PLUS SERIAL NO.) TO BE CLEARLY MARKED ON THE PART ITSELF.
- ALLOWABLE DRAFT ANGLE 2° MAX.

11. DIMENSIONS FROM MAX. DRAFT MATERIAL

D

C

B

A

8 7 6 5 4 3 2 1

PARTS LIST			
UNLESS OTHERWISE SPECIFIED: DIMENSIONS ARE IN INCHES -TOLERANCES-		CAD GENERATED DRAWING, DO NOT MANUALLY UPDATE DO NOT SCALE DRAWING	
DECIMALS .X = +/- .1 .XX = +/- .06 .XXX = +/- .010	ANGULAR = +/- .30° SURFACE FINISH = 250	HYTEC, INC TITLE LIGO HAM SUPPORT TUBE MOUNTING CAP	
FINISH	DESIGNED ROGER L. SMITH	SIGNATURE ROGER L. SMITH	DATE 5-28-97
PART NO. D972614-1	DRAWN ROGER L. SMITH	CHECKED HARRY SALAZAR	DATE 7-10-97
	ENGR. T. THOMPSON	APPROVED T. THOMPSON	DATE 7-10-97
	DWG. NO. D972614		SCALE 1/1
SIZE D		SHEET NO. 1 of 1	
REVISION B			