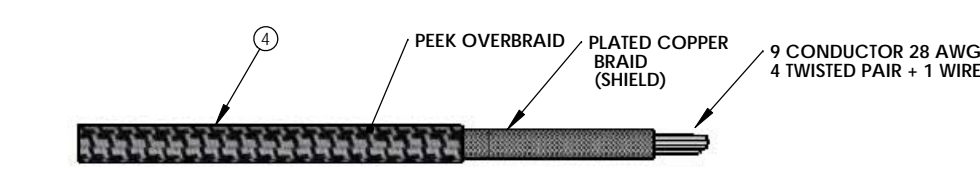
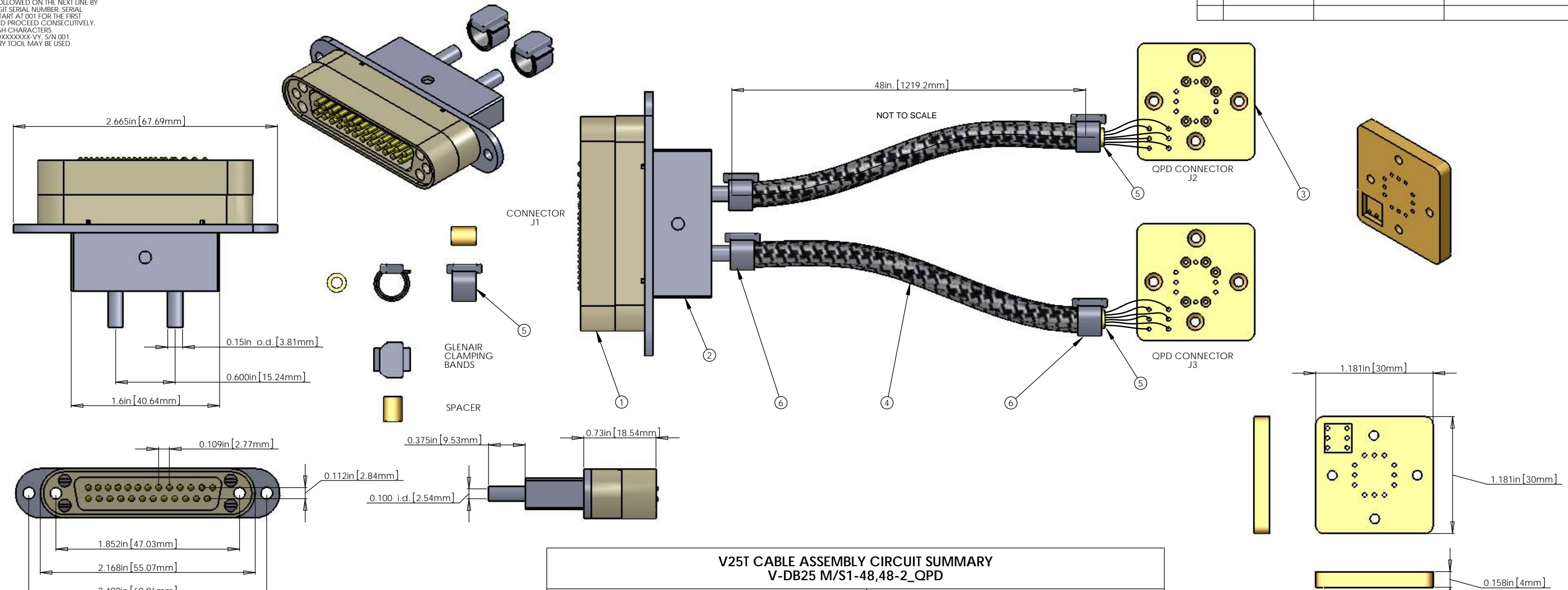


NOTES CONTINUED:
 5. SCRIBE, ENGRAVE, OR MECHANICALLY STAMP (NO INKS OR DYES) DRAWING PART NUMBER AND REVISION ON NOTED SURFACE FOLLOWED ON THE NEXT LINE BY A THREE DIGIT SERIAL NUMBER. SERIAL NUMBERS START AT 001 FOR THE FIRST ARTICLE AND PROCEED CONSECUTIVELY. USE 07 HIGH CHARACTERS. EXAMPLE: DXXXXXX-VY, S/N 001. A VIBRATORY TOOL MAY BE USED.

REV.	DATE	DCN #	DRAWING TREE #



V25T CABLE ASSEMBLY CIRCUIT SUMMARY V-DB25 M/S1-48,48-2_QPD

FROM					TO		
CONNECTOR J1 - 25 PIN SUBMINI_D MALE CONNECTOR (PEEK)					CONNECTOR J2 - QPD FEMALE CONNECTOR (PEEK)		
PIN	WIRE NAME	COLOR	LENGTH	TWISTED PAIR	PIN	WIRE NAME	SIGNAL
1, SHELL	SHIELD (BRAID)		36in.		N/C	SHIELD (BRAID)	SHIELD
1, SHELL	(CABLE 1) WIRE 1	White	36in.		N/C	(CABLE 1) WIRE 1	SHIELD
2	(CABLE 1) WIRE 2	White	36in.		1B	(CABLE 1) WIRE 2	QPD 2 ANODE 4
15	(CABLE 1) WIRE 15	White	36in.		2B	(CABLE 1) WIRE 15	QPD 2 ANODE 3
3	(CABLE 1) WIRE 3	White	36in.		3B	(CABLE 1) WIRE 3	QPD 2 ANODE 2
16	(CABLE 1) WIRE 16	White	36in.		4B	(CABLE 1) WIRE 16	QPD 2 ANODE 1
4	(CABLE 1) WIRE 4	White	36in.		5B	(CABLE 1) WIRE 4	QPD 2 SENSE
17	(CABLE 1) WIRE 17	White	36in.		6B	(CABLE 1) WIRE 17	QPD 2 CATHODE
					CONNECTOR J3 - QPD FEMALE CONNECTOR (PEEK)		
PIN	WIRE NAME	COLOR	LENGTH	TWISTED PAIR	PIN	WIRE NAME	SIGNAL
1, SHELL	SHIELD (BRAID)		36in.		N/C	SHIELD (BRAID)	SHIELD
5	(CABLE 2) WIRE 5	White	36in.		1B	(CABLE 2) WIRE 5	QPD 1 CATHODE
18	(CABLE 2) WIRE 18	White	36in.		2B	(CABLE 2) WIRE 18	QPD 1 SENSE
6	(CABLE 2) WIRE 6	White	36in.		3B	(CABLE 2) WIRE 6	QPD 1 ANODE 4
19	(CABLE 2) WIRE 19	White	36in.		4B	(CABLE 2) WIRE 19	QPD 1 ANODE 3
7	(CABLE 2) WIRE 7	White	36in.		5B	(CABLE 2) WIRE 7	QPD 1 ANODE 2
20	(CABLE 2) WIRE 20	White	36in.		6B	(CABLE 2) WIRE 20	QPD 1 ANODE 1
PIN 14,8,21,9,22,10,23,11,24,12,25 AND 13 N/C (NOT CONNECTED)							

BILL OF MATERIALS				
ITEM NO.	PART NUMBER	DESCRIPTION	QTY.	LENGTH
1	CUSTOM DB25 MALE	DB25 MALE CONNECTOR (J1) FOR UHV (PEEK)	1	
2	CUSTOM BACKSHELL	DB25 CONNECTOR BACKSHELL FOR UHV (STAINLESS)	1	
3		QPD FEMALE CONNECTOR (J2,J3) FOR UHV (PEEK)	2	
4	C1	9 COND. (4 TW PAIR+ SHIELD) CABLE WITH COPPER BRAID (SHIELD) AND PEEK OVERBRAID	2	48in., 48in.
5		3/16" SPACER 1/4" LENGTH 0.115" i.d.	2	
6	GLENAIR 600-052	GLENAIR 600-052 STANDARD BRAID CLAMP	4	
7		#2-56 ALLEN HEAD MACHINE SCREW	4	
8		#4-40 UNC ALLEN HEAD MACHINE SCREW	2	

- NOTES: (UNLESS OTHERWISE SPECIFIED)
- MATERIAL:**
 - CONNECTOR SHELL - PEEK
 - BACKSHELL - STAINLESS STEEL WITH VENT HOLE.
 - CONTACTS - BERYLLIUM COPPER ALLOW C17300 0.000050 MIN. GOLD OVER NICKEL
 - HARDWARE: CORROSION RESISTANCE STEEL, PASSIVATED
 - PEEK BRAID - PEEK CARBON FIBRE LOADED
 - CABLE 9 COND. 28 AWG, (40 STRD 44 AWG) WITH 2 LAYERS OF KAPTON TAPE 4 TWISTED PAIRS (4 TO 5 TWISTS PER INCH) + 1 WIRE OVERALL 40AWG SILVER PLATED COPPER BRAID 90% COVERAGE OVERALL PEEK BRAID MIN. 50% COVERAGE OVERALL CABLE O.D. WILL BE APPROX. 0.240 IN.**

STANDARD USE FOR THIS CABLE		
SUBSYSTEM	AIR/VAC	STANDARD USE
ISC	IN-VAC	QPD'S

DIMENSIONS ARE IN TOLERANCES: XX ±, XXX ±, ANGULAR ± °		NOTES AND TOLERANCES: (UNLESS OTHERWISE SPECIFIED) 1. INTERPRET DRAWING PER ASME Y14.5-1994. 2. REMOVE ALL SHARP EDGES, R.02 MIN. 3. DO NOT SCALE FROM DRAWING. 4. ALL MACHINING FLUIDS MUST BE FULLY SYNTHETIC, FULLY WATER SOLUBLE AND FREE OF SULFUR, SILICONE, AND CHLORINE.		CALIFORNIA INSTITUTE OF TECHNOLOGY MASSACHUSETTS INSTITUTE OF TECHNOLOGY		PART NAME CUSTOM CABLE SPECIFICATION V25T	
MATERIAL Material <not specified>		FINISH μinch		SYSTEM ISC		DESIGNER E.BROWN DRAFTER CHECKER APPROVAL	
NEXT ASSY		SIZE D		DWG. NO. D1000231-v1		REV. 	
SCALE: 2:1		PROJECTION:		SHEET 1 OF 1			