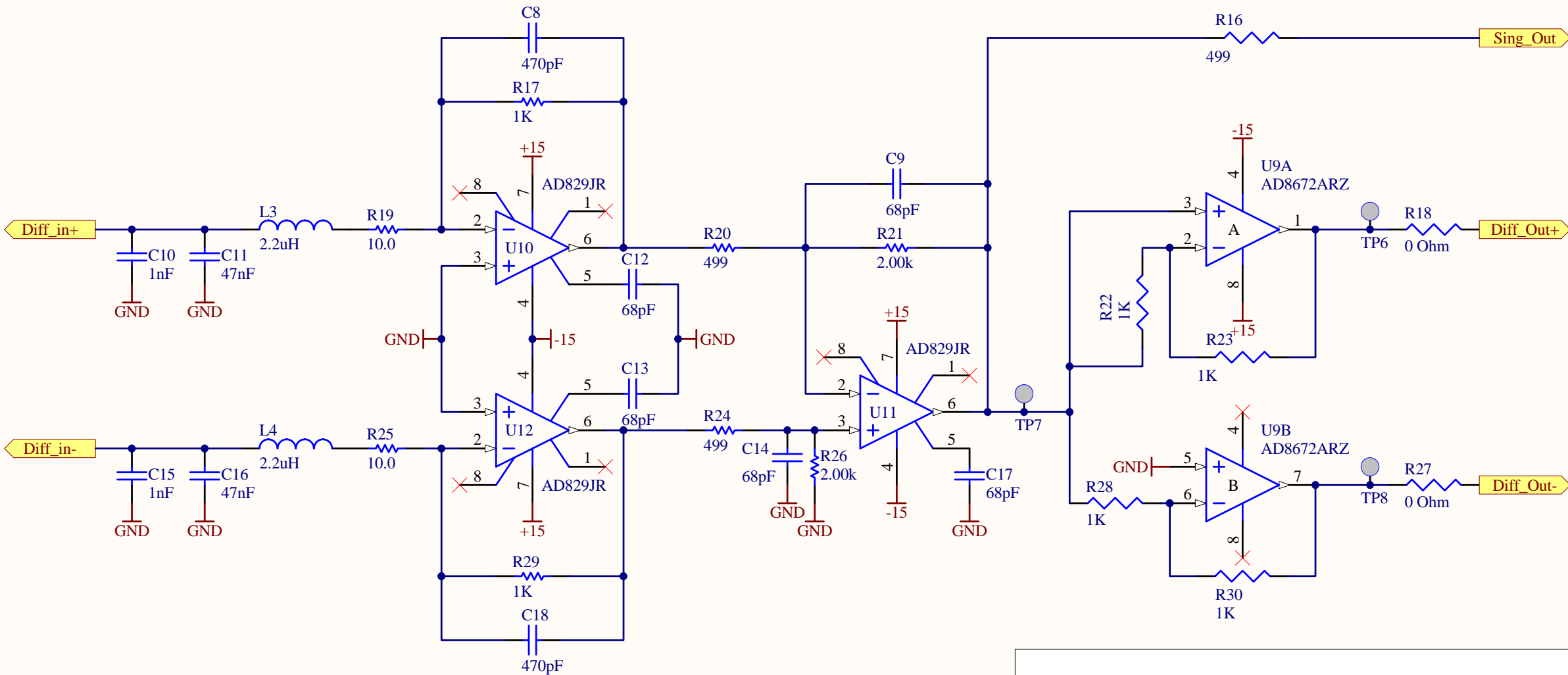


Last Edited: 22 January 2010

Title RF Logarithmic Detector			LIGO Laboratory California Institute of Technology Massachusetts Institute of Technology		LIGO
Size: A	PCB DCC # D0902745	SCH DCC # D0902745-V1	Engineer: R. Abbott	Date: 1/26/2010	
File: C:\Users\daniel\Protel\RF\AdL_Demod\rfdet.SchDoc				Time: 1:37:14 PM	Sheet 2 of 3



Nominal bandwidth is 300 kHz
Nominal DC gain is 5

Wide bandwidth modifications with 1.49 MHz bandwidth:
L3/L4: 220nH (10%) - Mouser 871-B82422T1221K
C11:/C16 4.7nF (2%) - Mouser 81-GRM2165C1H472GA01
C8/C18: 100pF (1%) - Mouser 81-GRM2165C2A101FA01
C9/C14/C17: 10pF (1%) - Mouser 81-GRM40C100B50D

