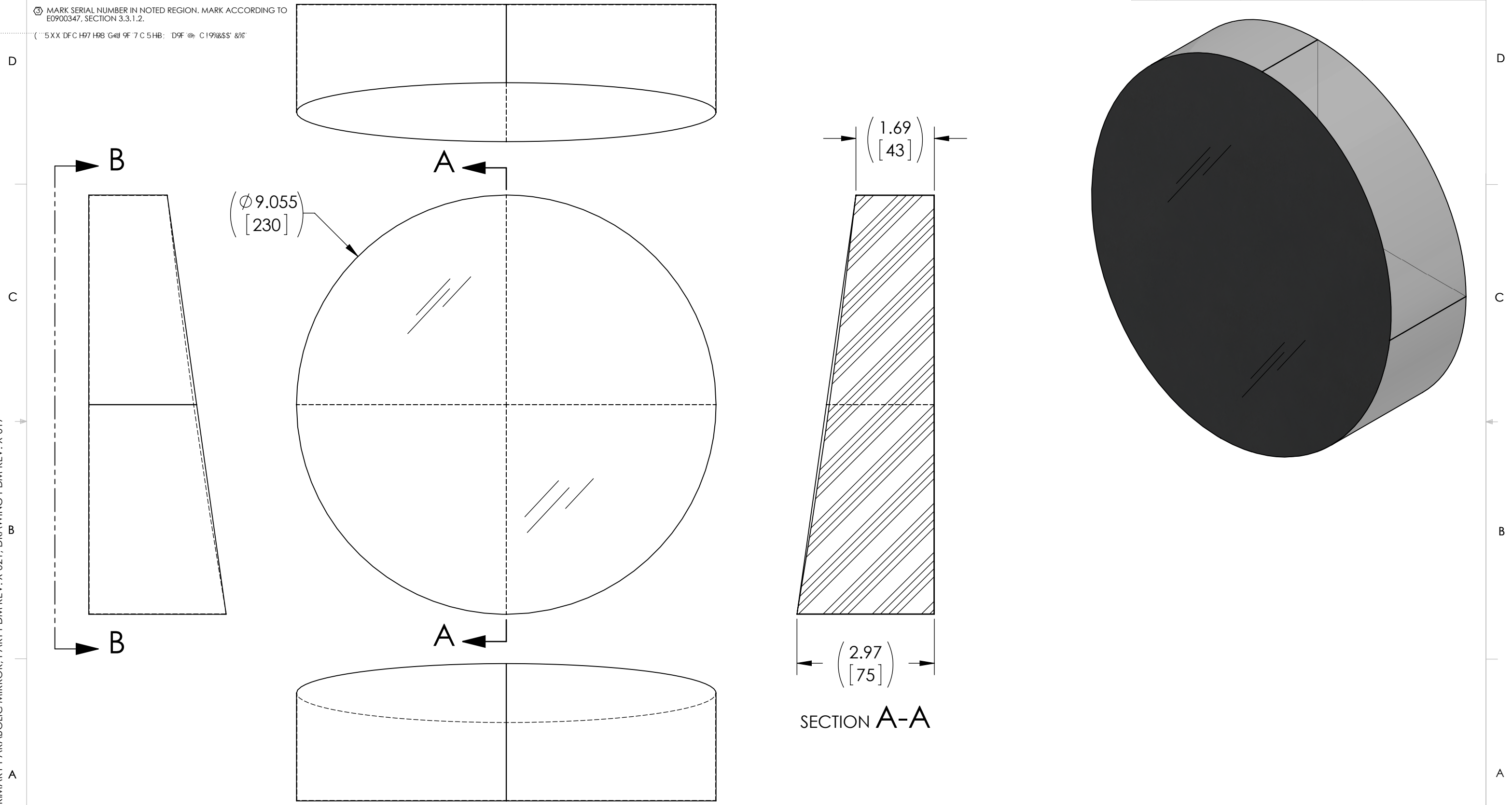


D1000075_dLIGO PRIMARY PARABOLIC MIRROR, PART PDM REV: X-021, DRAWING PDM REV: X-017

- NOTES:**
- PART AS SHOWN SHALL BE MANUFACTURED IN ACCORDANCE WITH LIGO SPECIFICATION E0900347.
 - MASS: 6.132 KG [13.519 LB].
 - MARK SERIAL NUMBER IN NOTED REGION. MARK ACCORDING TO E0900347, SECTION 3.3.1.2.
- ("5XX DFC H97 H98 G@d 9F 7 C 5 HB; D9F @ C19%&S\$ 8%")

REV.	DATE	DCN #	DRAWING TREE #
v1	21 SEP 2011	E1100351	-
v2	08 FEB 2012	E1101192	-
v3	15 MAY 2012	E1101192	-



NOTES AND TOLERANCES: (UNLESS OTHERWISE SPECIFIED)

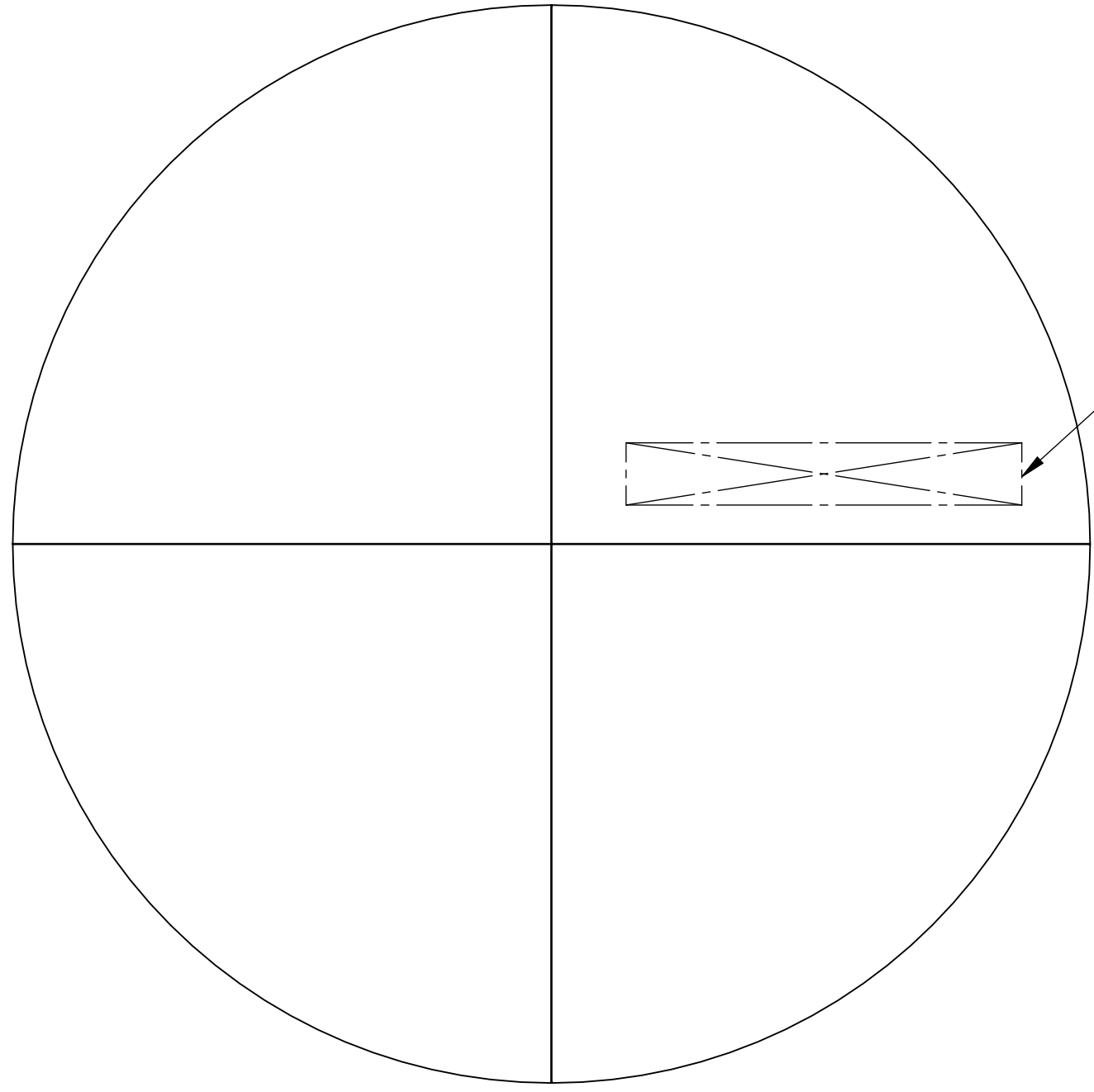
DIMENSIONS ARE IN INCHES

TOLERANCES:
 .XX ± .02
 .XXX ± .005
 ANGULAR ± 1.0°


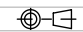
MATERIAL	ZERODUR	FINISH	N/A µinch
----------	---------	--------	-----------

CALIFORNIA INSTITUTE OF TECHNOLOGY MASSACHUSETTS INSTITUTE OF TECHNOLOGY		PART NAME aLIGO PRIMARY PARABOLIC MIRROR	
SYSTEM ADVANCED LIGO	SUB-SYSTEM AOS	DESIGNER M. SMITH	DATE 13 OCT 2009
DRAFTER J. TERRAZAS	CHECKER SEE DCN	DATE 08 FEB 2012	SIZE DWG. NO. B D1000075
APPROVAL SEE DCN	REVISION v'	SCALE NONE	PROJECTION
NEXT ASSY D1102361		SHEET 1 OF 2	

D1000075_qligo PRIMARY PARABOLIC MIRROR, PART PDM REV: X-021, DRAWING PDM REV: X-017



VIEW B-B

 CALIFORNIA INSTITUTE OF TECHNOLOGY MASSACHUSETTS INSTITUTE OF TECHNOLOGY	
SIZE B	DWG. NO. D1000075
SCALE: NONE	PROJECTION:  SHEET 2 OF 2
REV. V'	

8 7 6 5 4 3 2 1

D
C
B
A

D
C
B
A

8 7 6 5 4 3 2 1