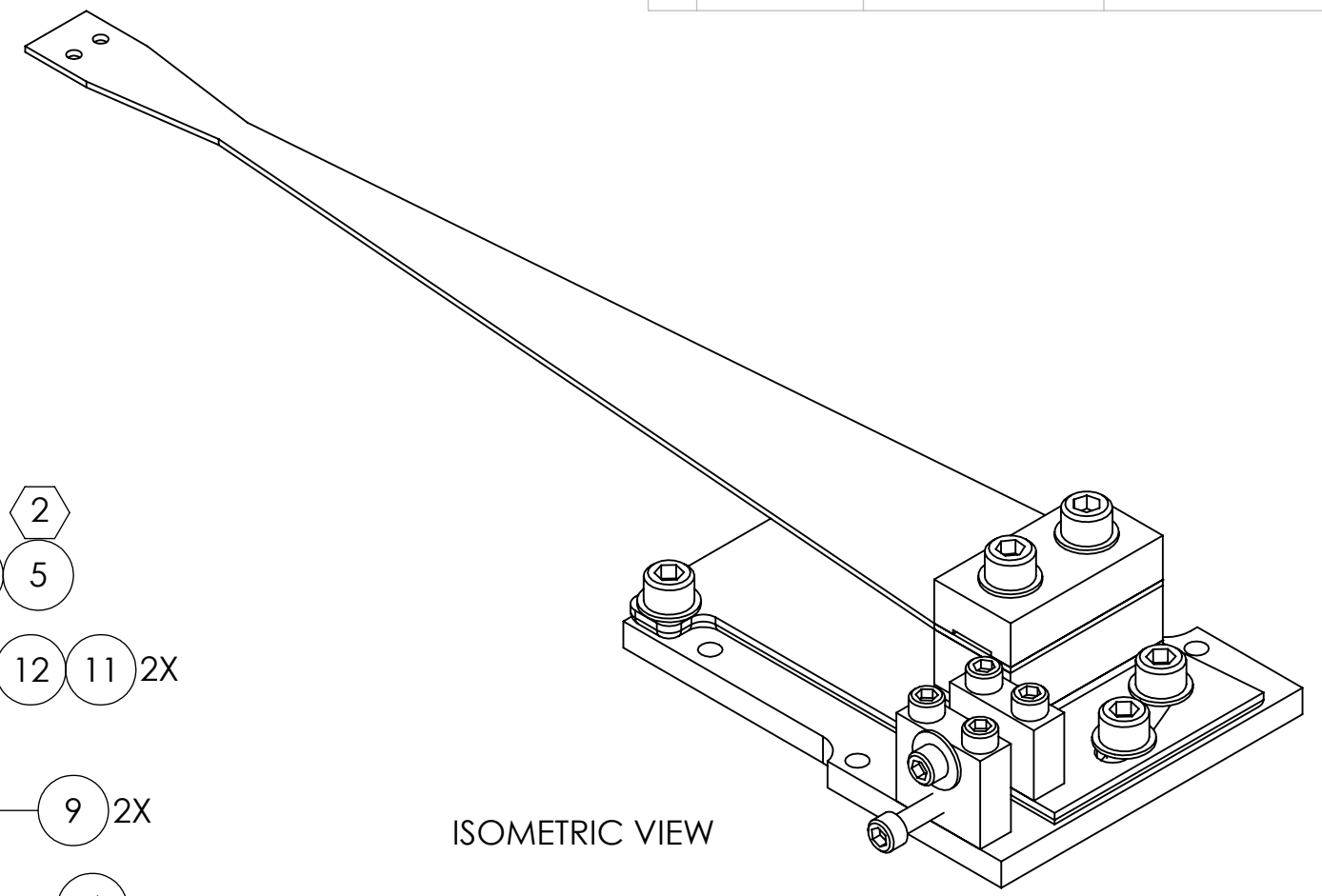
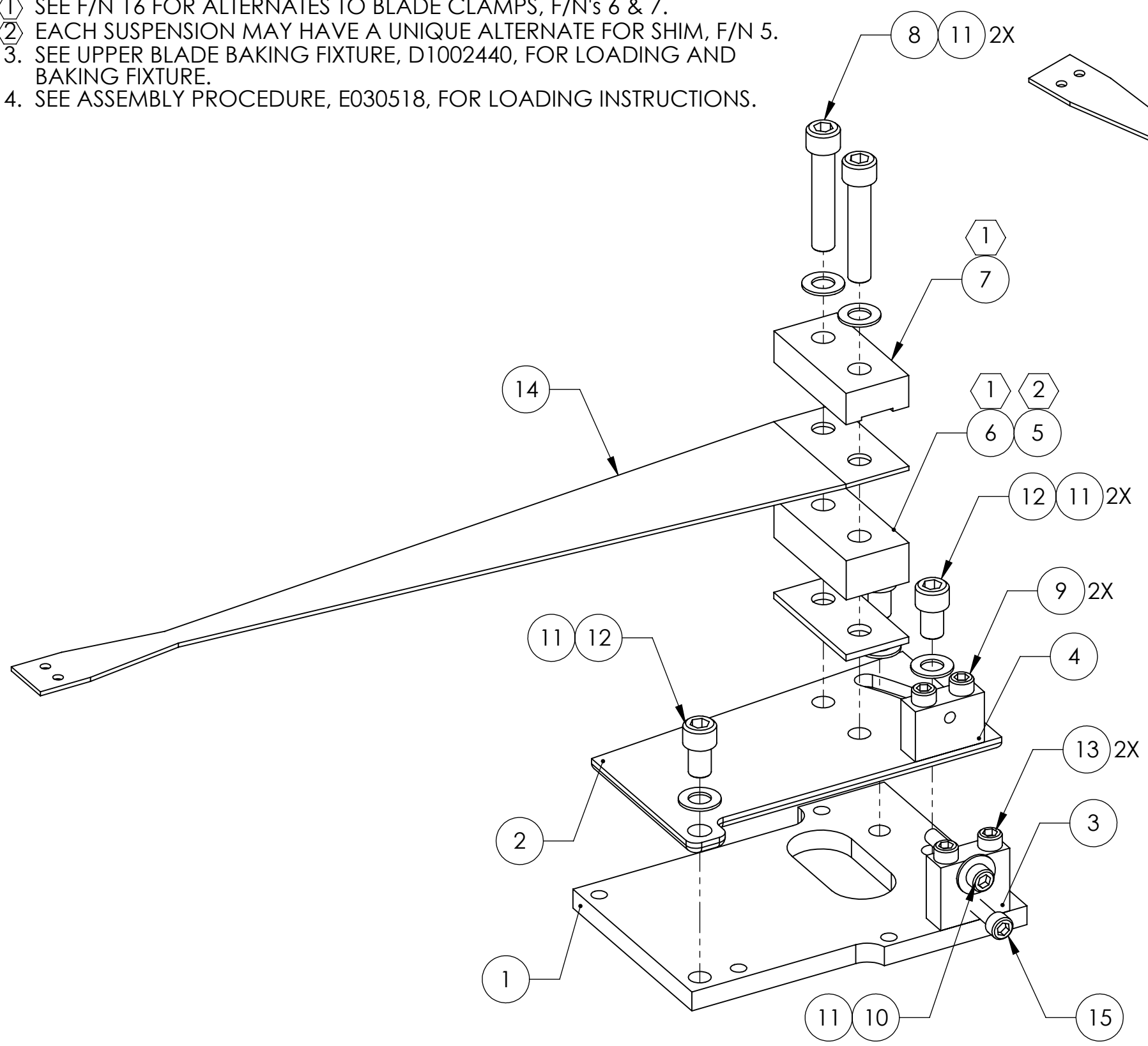


REV.	DATE	DCN #	DRAWING TREE #
v1	09 JUN 2010	E0900499	E0900353
v2	20 JUN 2011	E1100590	E0900353
-	-	-	-

- ① SEE F/N 16 FOR ALTERNATES TO BLADE CLAMPS, F/N's 6 & 7.
- ② EACH SUSPENSION MAY HAVE A UNIQUE ALTERNATE FOR SHIM, F/N 5.
- 3. SEE UPPER BLADE BAKING FIXTURE, D1002440, FOR LOADING AND BAKING FIXTURE.
- 4. SEE ASSEMBLY PROCEDURE, E030518, FOR LOADING INSTRUCTIONS.



ISOMETRIC VIEW

ITEM NO.	PART NUMBER	DESCRIPTION	MATERIAL	REQ	SPARE	TOTAL
16	D020677	LIBRARY OF CLAMPS, HSTS	-	AR	-	AR
15	D030025	SCREW, SOCKET HEAD CAP, #8-32 UNC-3A X 1 LONG, FULLY THREADED, ROUNDED END	Ag-PLATED 300 SSSL	1		1
14	D1001812	HSTS UPPER BLADE	MARAGING STEEL C250	1		1
13	-	SCREW, SOCKET HEAD CAP, #8-32 UNC-2A X 1 LONG	300 SSSL	2		2
12	-	SCREW, SOCKET HEAD CAP, 1/4-20 UNC-2A X 0.375 LONG	300 SSSL	3		3
11	-	WASHER, FLAT, 1/4 (NAS 620-C416L OR EQUIVALENT)	300 SSSL	6		6
10	-	SCREW, SOCKET HEAD CAP, #8-32 UNC-2A X 1 LONG	Ag-PLATED 300 SSSL	1		1
9	-	SCREW, SOCKET HEAD CAP, #8-32 UNC-2A X 0.75 LONG	Ag-PLATED 300 SSSL	2		2
8	-	SCREW, SOCKET HEAD CAP, 1/4-20 UNC-2A X 1.25 LONG	Ag-PLATED 300 SSSL	2		2
7	D020116	UPPER BLADE CLAMP UPPER SIDE 0.0 DEGREE ①	304, 316 OR 302 SSSL	1		1
6	D030459	RA UPPER BLADE CLAMP LOWER SIDE 0.0 DEGREE ①	304, 316 OR 302 SSSL	1		1
5	D020680	UPPER BLADE CLAMP LOWERSIDE SHIM 2mm ②	304, 316 OR 302 SSSL	1		1
4	D030450	PULL PLATE	304, 316 OR 302 SSSL	1		1
3	D030449	PUSH PLATE	304, 316 OR 302 SSSL	1		1
2	D030447	ROTATING PLATE	304, 316 OR 302 SSSL	1		1
1	D030448	BASE PLATE	6061-T6 Al	1		1

PARTS LIST

CALIFORNIA INSTITUTE OF TECHNOLOGY MASSACHUSETTS INSTITUTE OF TECHNOLOGY		PART NAME		ROTATIONAL ADJUSTER ASSY	
SYSTEM	ADVANCED LIGO	SUB-SYSTEM	SUS	DESIGNER	MPL 04 SEP 2003
DRAFTER	B. MOORE	CHECKER	D. BRIDGES	DATE	14 JUN 2012
NEXT ASSY	D020700	APPROVAL		SIZE	DWG. NO. B D1000045
				REV.	v2
				SCALE	3:4 PROJECTION: SHEET 1 OF 1

D1000045\_dLIGO\_SUS\_Rotational Adjuster Assy, PART PDM REV: X-042, DRAWING PDM REV: X-008