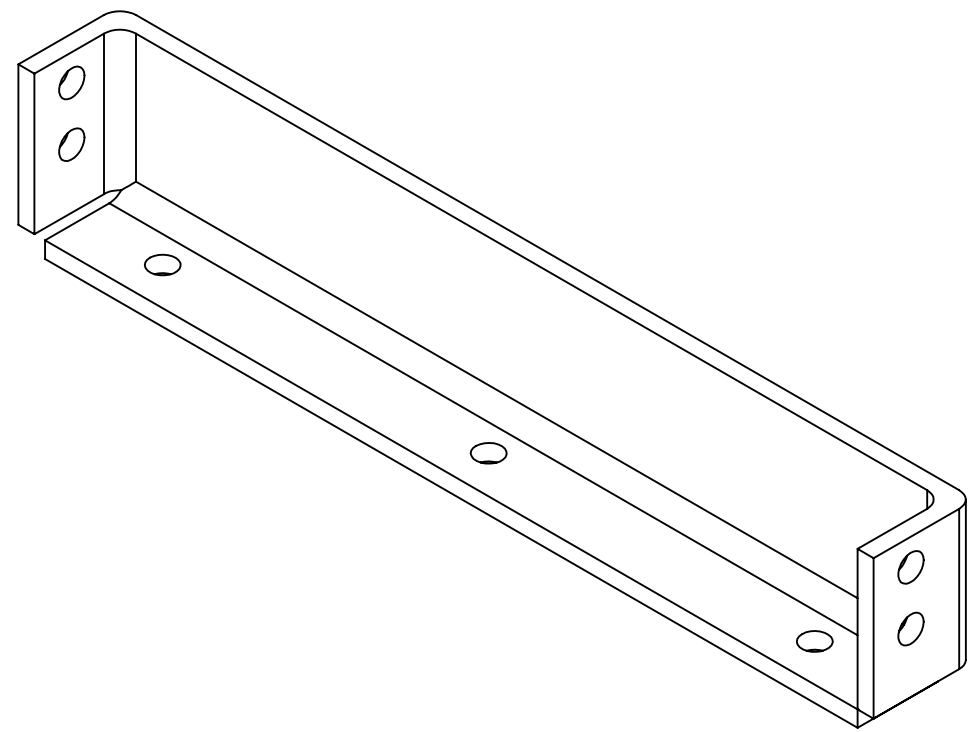


NOTES CONTINUED:

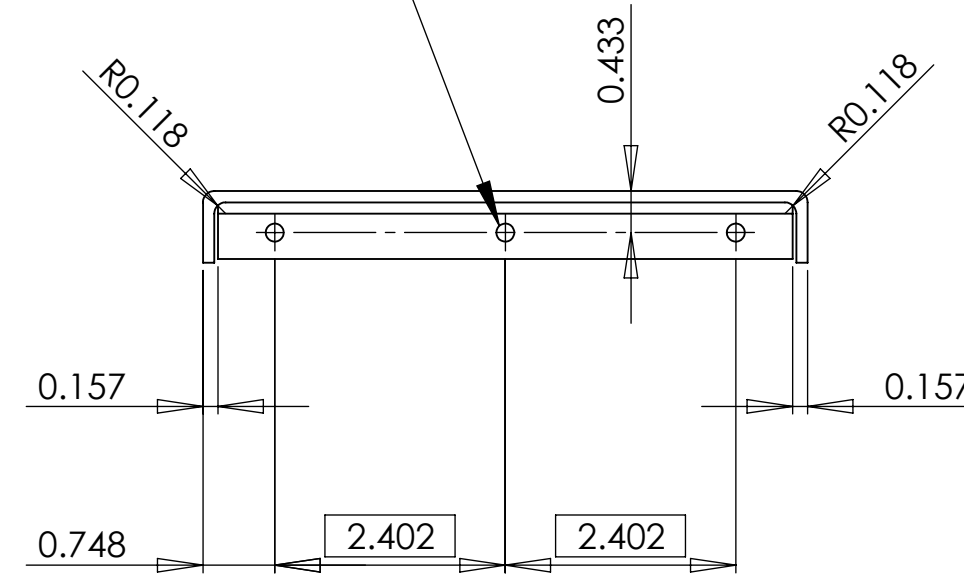
REV.	DATE	DCN #	DRAWING TREE #



ISOMETRIC VIEW

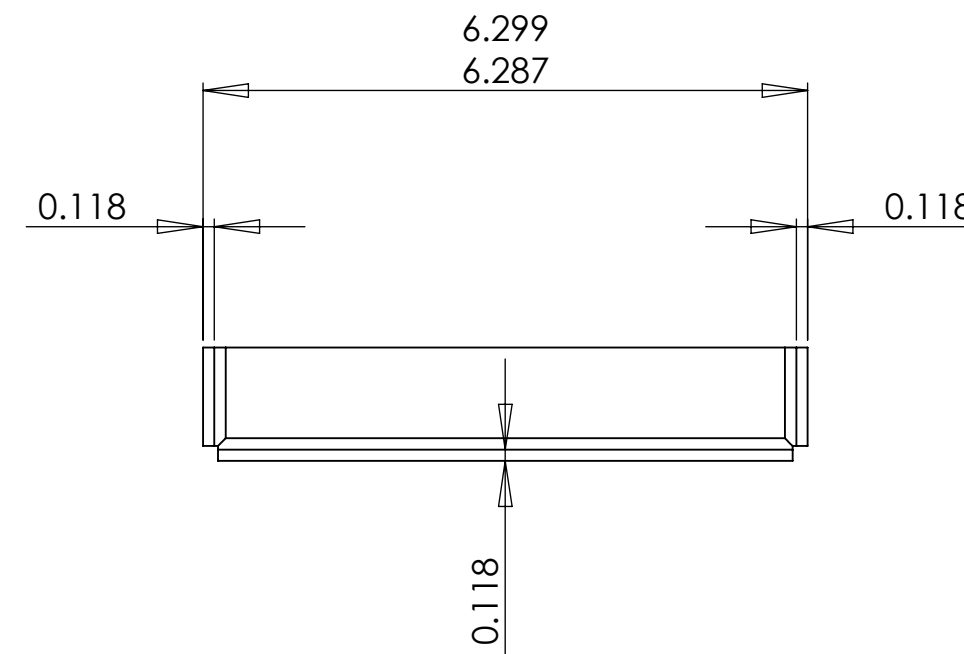
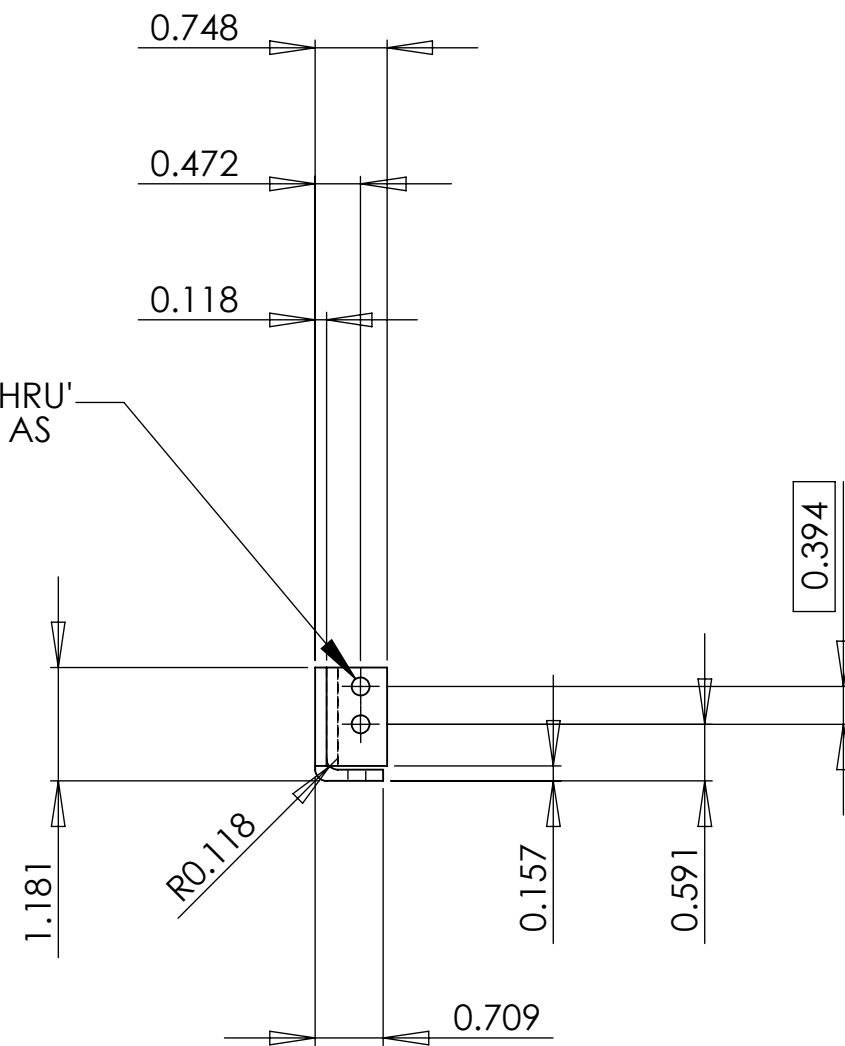
3-HOLES DRILL $\varnothing 0.188$ THRU'
POSITIONED AS SHOWN

$\varnothing \pm 0.004$



2-HOLES DRILL $\varnothing 0.188$ THRU'
BOTH ENDS POSITIONED AS
SHOWN

$\varnothing \pm 0.004$



NOTES AND TOLERANCES: (UNLESS OTHERWISE SPECIFIED)

DIMENSIONS ARE IN INCHES

GENERAL TOLERANCES:

0<X<2" : ± 0.004 "

2<X<6" : ± 0.008 "

6<X<40" : ± 0.012 "

ANGULAR : $\pm 0.2^\circ$

GEOMETRIC TOLERANCES:
ISO-2768-K

1. INTERPRET DRAWING PER ASME Y14.5-1994.
2. REMOVE ALL SHARP EDGES 0.02 ± 0.01 AND REMOVE ALL BURRS.
3. DO NOT SCALE FROM DRAWING.
4. ALL MACHINING FLUIDS SHALL BE WATER SOLUBLE AND FREE OF SULFUR, CHLORINE AND SILICONE, SUCH AS CINCINNATI MILACRON'S CIMTECH 410.

MATERIAL ALUMINIUM

FINISH 125 μ inch

LIGO CALIFORNIA INSTITUTE OF TECHNOLOGY
MASSACHUSETTS INSTITUTE OF TECHNOLOGY

SYSTEM ADVANCED LIGO

SUB-SYSTEM SUS

NEXT ASSY

PART NAME

LONG SIDE RIB (MIT)

DESIGNER L.CUNNINGHAM 01/12/2009
DRAFTER K.MCINTYRE 15/12/2009
CHECKER B.HENDERSON 21/12/2009
APPROVAL B.HENDERSON 21/12/2009

SIZE DWG. NO. REV.
C LIGO-D1000015 03
SCALE: 1:2 PROJECTION: SHEET 1 OF 1