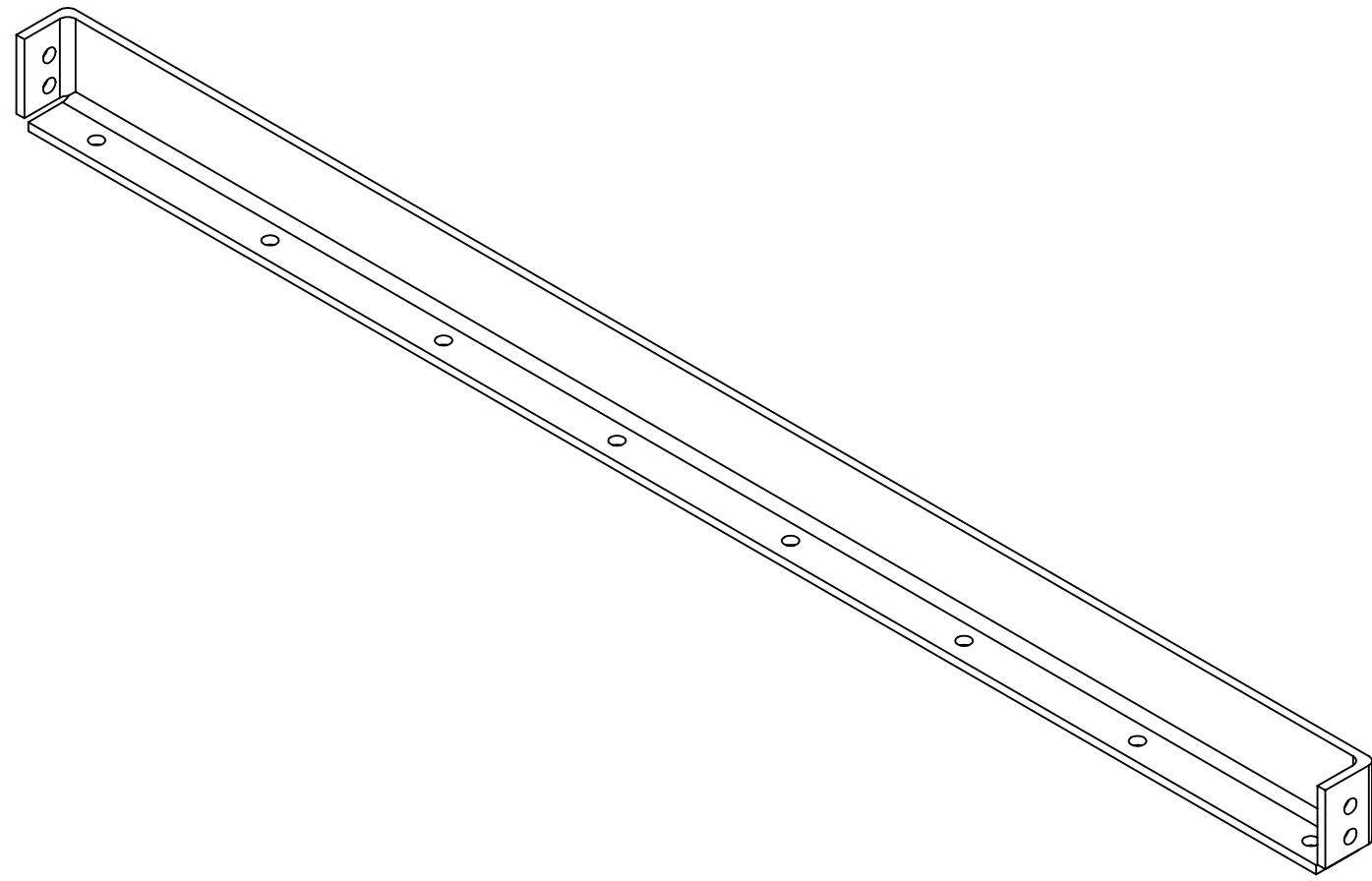


NOTES CONTINUED:

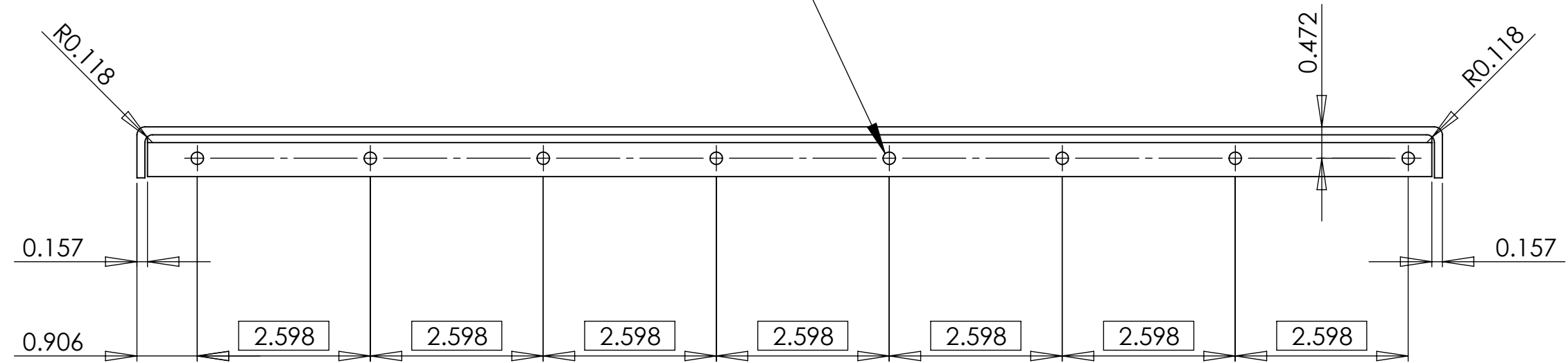
REV.	DATE	DCN #	DRAWING TREE #



ISOMETRIC VIEW

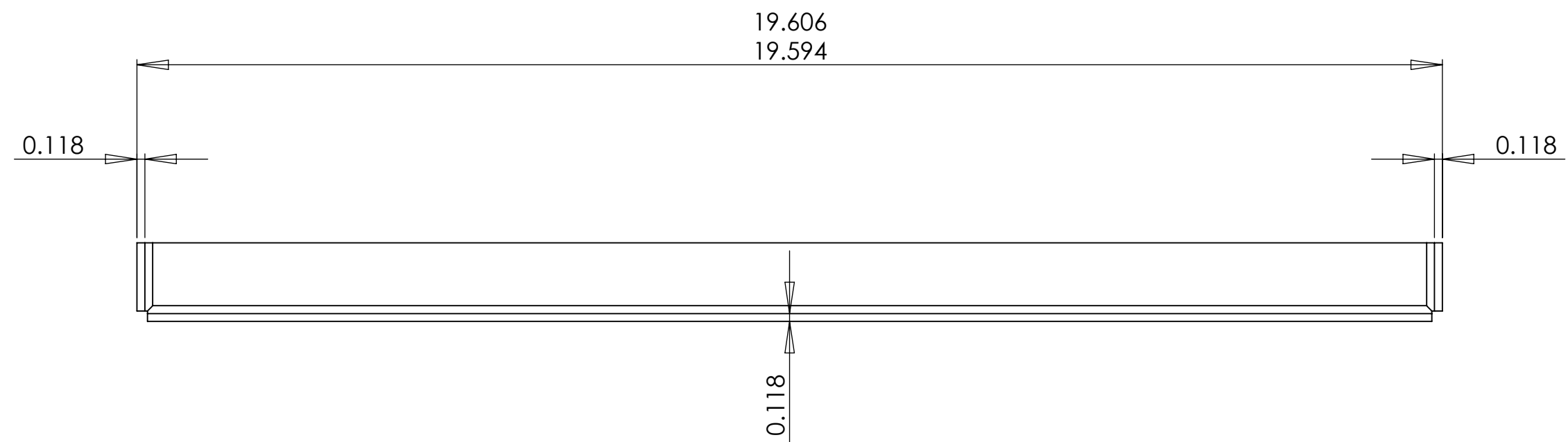
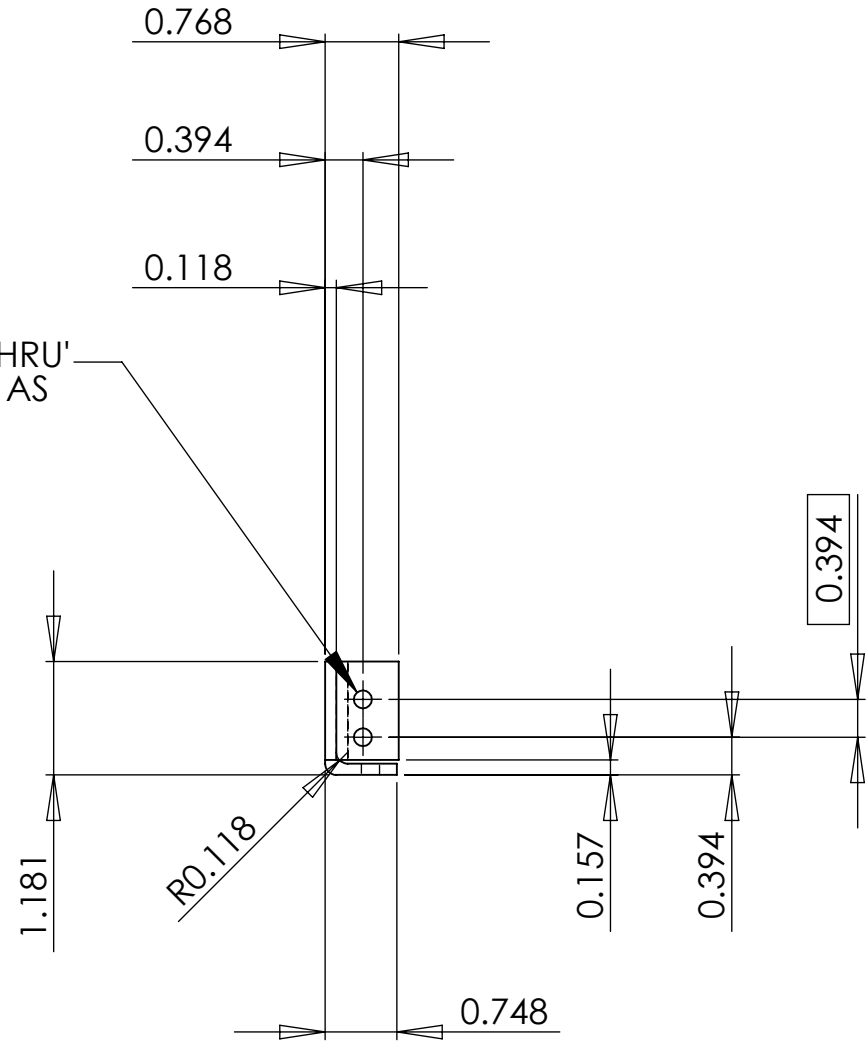
8-HOLES DRILL $\phi 0.188$ THRU'
POSITIONED AS SHOWN

$\oplus \phi 0.004$



2-HOLES DRILL $\phi 0.188$ THRU'
BOTH ENDS POSITIONED AS
SHOWN

$\oplus \phi 0.004$



NOTES AND TOLERANCES: (UNLESS OTHERWISE SPECIFIED)

DIMENSIONS ARE IN INCHES

GENERAL TOLERANCES:

0<X<2" : ± 0.004 "

2<X<6" : ± 0.008 "

6<X<40" : ± 0.012 "

ANGULAR : $\pm 0.2^\circ$

GEOMETRIC TOLERANCES:

ISO-2768-K

1. INTERPRET DRAWING PER ASME Y14.5-1994.
2. REMOVE ALL SHARP EDGES 0.02 ± 0.01 AND REMOVE ALL BURRS.
3. DO NOT SCALE FROM DRAWING.
4. ALL MACHINING FLUIDS SHALL BE WATER SOLUBLE AND FREE OF SULFUR, CHLORINE AND SILICONE, SUCH AS CINCINNATI MILACRON'S CIMTECH 410.

MATERIAL
ALUMINIUM

FINISH
125 μ inch



SYSTEM
ADVANCED LIGO

SUB-SYSTEM
SUS

NEXT ASSY

PART NAME

CROSS RIB (MIT)

DESIGNER	L.CUNNINGHAM	01/12/2009
DRAFTER	K.MCINTYRE	15/12/2009
CHECKER	B.HENDERSON	21/12/2009
APPROVAL	B.HENDERSON	21/12/2009

SIZE	DWG. NO.	REV.
C	LIGO-D1000014	03
SCALE: 1:2	PROJECTION:	SHEET 1 OF 1